

REAL ESTATE REAL ESTATE

TENNEY CIRCLE—

This is one of Chapel Hill's finest and most spacious homes. There are four bedrooms in this two story, white frame house and the lot is very large and beautifully planned. Shown by appointment only.

12-B WILLIAMS CIRCLE

Here is a superb home in every respect. There are 3 bedrooms and two baths in this plaster wall house, a fireplace in the living room and a big kitchen. Six years of devoted work have gone into the landscaping—just wait until you see the shrubs and especially the rose garden, and the inside too,—it's in perfect condition. This is a real fine home for \$20,000.

WESLEY DRIVE—PINEBROOK ESTATES

New 3 bedroom, 2 bath house with all the city conveniences. This is situated on a high lot and the living room with its fireplace looks out over the neighborhood—there is a separate dining room too. Paved drive into a double carport with an entrance into the all gas kitchen—family room. \$24,000.

CASWELL ROAD—ESTES HILLS

A volume of specifications went into this unusual deluxe home. If you need bookcases you have them to spare in this completely air conditioned home. There are two complete baths—one with each bedroom, and the library has its own fireplace—the living room too. This house must be seen to be appreciated.

WESLEY COURT

Here is a home for a big family—4 bedrooms are in the upper level along with 2 baths. The mid level has living room, dining room and kitchen full of built-ins. The lower level has a double garage, family room with fireplace and a utility room—bath combination. The lot is well landscaped and all city conveniences are in use. \$28,500.

SEVERIN STREET

This is a delightful 3 bedroom home. The lot is tremendous and full of years planning. For the extra touch there is a large family room with sliding glass doors in the rear leading to a raised patio. Its a real fine home for a medium sized family. \$18,000.

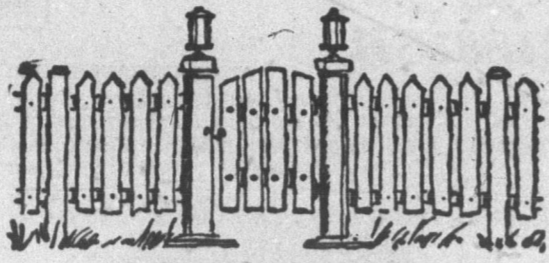
CHAPEL HILL REALTY

Tankersley Bldg., next to Post Office  
942-5361 Phone 942-3726

John Allen Cates Thomas L. Hannaford  
• Sales • Rentals • Insurance

REAL ESTATE REAL ESTATE

Chapel Hill's Finest Address



TOWNE HOUSE OF CHAPEL HILL

PHONE 942-2163

9 A.M.-6 P.M.

NOW RENTING

- 65 Ft. Swimming Pool
- Recreation Areas
- 3-Bedroom Luxury Units
- 2 Ceramic Baths
- Complete GE Kitchens with Disposal & Dishwasher
- Water Furnished
- Individual Patio & Storage Room
- Washer & Dryer Facilities
- Paved Parking Area
- Telephone Jack
- Master TV Outlet

1, 2, 3, & 4 BEDROOM APARTMENTS

Entrances on Hillsboro Street and Airport Road



REAL ESTATE REAL ESTATE

For Those Who Want the Finer Home . . .

Let us show you our EXCLUSIVE LISTINGS  
Westwood, Greenwood, Estes Hills,  
Morgan Creek and Lake Forest  
E. J. Owens and R. M. Kendall  
At Your Personal Service

OWENS REALTY CO.

Orange Savings and Loan Building  
DAYS . . . 942-2952 or 942-5665  
NIGHTS and WEEK-END . . . 942-2777 or 968-6815  
Telephones

REAL ESTATE REAL ESTATE

Foushee-Olsen REALTY CO.

HEY MOM!

"Come away from the kitchen" (that scrumptious stainless steel, built-in kitchen designed for maximum efficiency with separate utility room and adjoining expansive paneled family room). "Come down here to mine and brother's and sister's great big basement recreation room next to the shop and garage and half bath! This one really has the room!"

And this is my room with the built-in desk — shelves and light. And brother and sister have their own desks. Also walking distance to schools. Proved GOOD value! Another of Foushee-Olsen's fine listings in all ranges.

DIAL 968-4431 REALTORS

REAL ESTATE REAL ESTATE

Fambrough Realty Co.

TWO HOUSES FOR RENT

942-4961



REAL ESTATE REAL ESTATE

Real Estate Brokers



Sales, Rentals Property Management

1408 East Franklin St. PHONE 942-5136

A BACKGROUND FOR LIVING

This home is up to the minute in construction and is beautifully decorated to please the most fastidious. Cathedral ceilings, indirect lighting in the living room, built-in unit, oven and refrigerator are just a few of the many features that will make this the home for you. You'll never find a better paradise than this .99 acres out the Airport Road.

TWO BEDROOMS

Located on Goldston Drive which is dead-end for children play. Here is where you can have family comfort for little money invested. There has been a stairway built to the attic and the total space floored for playroom or two more bedrooms for the family. You can have this entire package for the low price of \$7,850.00.

FOUR BEDROOMS BRICK

With these large bedrooms everyone can have a room of his own. There are two and one half baths, a 21 foot family room plus a 23 foot kitchen and circulating hot water heat to each room. The location is ideal with a corner lot with city water and city sewer but no city taxes. Only \$29,500 in price and one mile to the square.

ELECTRIC HEAT

Entrance foyer, large living room, birch-paneled family room with fireplace and sliding glass doors opening to a large patio. Antique brick house set high on large lot with three bedrooms, and two ceramic baths for under \$25,000.

BETWEEN UNC AND DUKE

This home is waiting for you to be complete. Its close to both University campuses and just look at some of the splendid features: a large kitchen and living room with convenient foyer, 1 1/2 ceramic tile baths, three roomy bedrooms, and protective combination carport, screened porch or playroom. Best of all, it's most reasonably priced at only \$17,500.00

Call Kutz Realty Company Wilbur Kutz Phone 942-5136 1408 East Franklin St. Chapel Hill, N. C. Henry Edmiston Call Kutz Realty Company

REAL ESTATE REAL ESTATE

HORNADAY & COMPANY Realtor

Exclusive Agents for Estes Hills Lots WE HAVE NICE LEVEL LOTS 5 MILES OUT ON OLD DURHAM ROAD FOR SALE.

Collier Cobb & Associates Bldg., 1407 E. Franklin Phone 942-5365

FLUORIDATION

A Partial List of Communities Where Fluoridation Was Adopted and Later Discarded

(The following information is based substantially on a report dated April 1963 from the United States Public Health Service, Division of Dental Public Health and Resources, and from information in the National Fluoridation News)

Location	Population (less than 2500)	Comments
<b>CALIFORNIA</b>		
Martinez	8,769	Voted out 3-55 (1115:784) after 1 year
Alhambra Valley	*	Same as above.
Mount View	4,000	Same as above.
Pleasant Hill	5,000	Same as above.
Rio Vista	2,616	Voted out 4-56 (559:307) after 5 years.
St. Helena	3,025	Stopped in 1960.
San Diego	555,000	Voted out 6-54 (46,967:41,382) after 2 years.
Del Mar	*	
La Jolla	*	
Part of Coronado	17,171	Discontinued by action of San Diego vote.
San Dieguito	*	
Santa Fe	8,000	
Woodland	11,500	Voted out 4-56 (1447:787).
<b>COLORADO</b>		
Cortez	3,700	Voted out 4-61 after 2 years.
Johnstown	*	1958 Discontinued—faulty equipment.
Palisade	*	1959 Same as above.
<b>FLORIDA</b>		
Mount Dora	3,028	Voted out 8-52 (3:1) after 2 years.
St. Petersburg	181,298	Discontinued 7-57 after 2 yrs. by City Council
Gulfport	11,000	New Council voted to restart. People voted it out
Oldsmar	*	12-59 (18,595:12,335).
Pinellas Park	10,848	
<b>IDAHO</b>		
Coeur d'Alene	12,198	Voted out 4-55 (2,473:997) after 3 years.
Lewiston Orchards	9,500	Voted out 4-56 after 4 years.
St. Maries	2,500	Voted out 8-55 (426:216) after 2 months.
<b>ILLINOIS</b>		
Geneseo	4,631	Voted out 9-54 (988:422) after 6 months.
Pleasant Mill	*	Voted out in 1959.
<b>INDIANA</b>		
Tell City	6,516	Voted out 5-58 (1,469:806) after 5 years.
<b>IOWA</b>		
Knoxville	7,623	Voted out 11-53 (868:356)
<b>KANSAS</b>		
Horton	3,000	Voted out 4-60 (371:299) after 8 years.
Wakeeney	2,517	Voted out 1-54 after 13 days.
<b>KENTUCKY</b>		
Franklin	4,343	Voted out 8-55 (753:713) after 3 years.
<b>LOUISIANA</b>		
Port Sulphur	2,868	Discarded—no details.
St. Martinsville	4,614	Discarded 9-54—no details
<b>MAINE</b>		
Bangor	39,500	Voted out 10-55 (2,676:2,156) after 1 year.
<b>MASSACHUSETTS</b>		
Andover	17,134	Voted out 3-61 after 5 years.
Hudson	10,500	Voted out 3-54 (198:26) after 1 year.
North Andover	11,600	Voted out 3-58 (2513:1775) after 4 1/2 years.
Northampton	30,500	Voted out 11-53 after 3 years.
Reading	19,800	Voted out 10-59 (1116:794) after 3 years.
Williamstown	5,408	Voted out 4-53 (3:1) after 2 months.
Wilmington	12,475	Voted out 3-62 (1622:701) after 7 years.
<b>MICHIGAN</b>		
Grosse Pte. Farms	13,000	Voted out 4-55 (1832:1366) after 4 years.
Grosse Pte. Shores	2,500	Same as above.
City of Grosse Pte.	7,500	Same as above.
Ishpeming	9,400	Voted out 8-54.
Lake Odessa	*	Discontinued in '57 after 4 years.
Mancelona	*	Voted out 3-58 after 4 years.
Saginaw	105,000	Voted out 11-54 (12,034:11,806) after 2 yrs. Second vote 11-60 (15,632:11,842) against.
<b>MINNESOTA</b>		
Austin	25,500	Voted out 3-56 (4667:2563) after 5 years.
Fairbault	16,028	Voted out 4-55 after 1 1/2 yrs. 11-60, people voted against (2900:2400).
Roseau	*	Stopped 1960. Faulty equip. or oper. troubles.
Okabena	*	Stopped 1961. Faulty equip. or oper. troubles.
<b>MISSISSIPPI</b>		
Bay Springs	*	Voted out 1-55 by Board action after 1 1/2 yrs.
<b>MONTANA</b>		
Chinook	*	Stopped 1959.
Fort Belknap	*	Stopped—faulty operating practices.
Folsom	2,280	Voted out by City Council after 3 months.
<b>NEBRASKA</b>		
Beatrice	11,813	Voted out 4-55 (2079:1129) after 4 years.
<b>NEW HAMPSHIRE</b>		
Concord	29,300	Voted out 11-59 (4480:2109) after 7 years. Badly corroded water mains showed high fluoridation content in corrosion.
<b>NEW JERSEY</b>		
Florham Park	7,222	Stopped 1957.
Morrisstown	17,500	Stopped 1-56 after 5 years.
Hanover	3,200	Same as above.
Harding Twp.	*	Same as above.
Mendham Twp.	*	Same as above.
Morris Twp.	2,500	Same as above.
Morris Plains	2,500	Same as above.
Perth Amboy	45,000	Stopped 12-56.
Sayreville	22,500	Stopped 1958. Changed water supply source.
Spotswood	5,700	Stopped 1956. Changed water supply source.
<b>NEW YORK</b>		
Amsterdam	33,200	Voted out 3-56 by City Council after 3 years.
Fulton	14,800	Voted out 3-56 by City Council after 3 years.
Schenectady	90,000	Stopped in '56 after 3 yrs.—faulty machinery. Restarted '57—stopped '59.
<b>NORTH CAROLINA</b>		
Gastonia	37,389	Suspended by Mayor 8-56.
Greensboro	119,000	Voted out 11-59 (5895:4325) after 2 years.
Guilford College	*	Same as above.
Hamilton Lakes	*	Same as above.
Sylva	*	Stopped 1952. Faulty equip. or oper. trouble.
<b>OHIO</b>		
Akron	300,000	Voted out 3-54 by City Council after 2 months.
Canton	121,000	Voted out 11-59 (19,444:18,240) after 7 years. Second vote 11-62 (23,878:14,798) against.
<b>OKLAHOMA</b>		
Ardmore	24,000	Voted out 9-61 after 8 years.
Claremore	5,494	Voted out 7-58 (621:242) after 6 weeks.
Mangum	4,000	Discontinued 1957. Faulty equip. or oper. trouble.
Tonkawa	3,400	Stopped 1954.
<b>PENNSYLVANIA</b>		
Monaca	7,415	Voted out by Council 3-60 after 1 year.
<b>SOUTH CAROLINA</b>		
Greenville	67,500	Voted out 5-55 after 1 year.
Renfrew	*	Same as above.
Rural	*	Same as above.
Maudlin	*	Same as above.
Marietta	*	Same as above.
Simpsonville	*	Same as above.
Slater	*	Same as above.
Travelers Rest	*	Same as above.
Fountain Inn	2,800	Same as above.
<b>TENNESSEE</b>		
Frasier	*	Discontinued 1957. Changed water supply source.
<b>TEXAS</b>		
Graham	6,742	Discontinued—no details.
Iowa Park	3,295	Discontinued '57 after 6 years.
Sweetwater	14,000	Discontinued 1956.
Tyler	50,000	Voted out 4-54 (3:1) after 2 years.
Wichita Falls	109,000	Voted out 12-54 (1891:1417) after 3 years.
<b>UTAH</b>		
Vernal	2,800	Installed by town council without a vote but in 11-57 it was voted out (672:440).
<b>VERMONT</b>		
Springfield	14,000	Discontinued '56 after 1 year.
<b>VIRGINIA</b>		
Blackstone	3,356	Voted out 7-56 (506:114) after 3 years.
Charlottesville	27,500	Voted out 10-55 by City Council after 4 yrs.
Hopewell	18,000	Voted out 4-60 after 6 years.
Madison Hts.	*	Discontinued. Changed water supply source.
Petersburg	35,000	Voted out 4-57 by City Council after 6 years.
<b>WASHINGTON</b>		
Kennewick	13,650	Stopped 8-51 after 1 year. Faulty equipment. Stopped 1960.
Grand Coulee	*	
<b>WEST VIRGINIA</b>		
Hinton	5,780	Voted out 9-54 after 1 year.
New Martinsville	4,084	Voted out by Council 3-54 after 6 weeks.
<b>WISCONSIN</b>		
Antigo	9,902	Voted out 11-60 after 11 years.
Delavan	4,007	Voted out 4-54 after 5 months.
Eagle River	*	Voted out 9-60 after 9 years.
Elroy	*	Discontinued 4-53 after 2 years.
Gillett	*	Voted out 4-56 (317:145) after 3 1/2 years.
Ladysmith	3,800	Discontinued—no details.
LaCrosse	50,000	Voted out 4-54 (10,525:2,356) after 1 year.
Manitowoc	32,000	Voted out by referendum.
Markesaw	*	Discarded—no details.
Platteville	5,751	Voted out 7-55 (799:730) after 4 years.
Prairie du Sac	*	Voted out 9-54 after 3 years.
Rhineland	8,774	Voted out 4-55 (1550:11173) after 5 years.
Stevens Point	16,564	Voted out 9-50 (2:1)
Westby	*	Voted out by City Council 5-23 after 3 1/2 years.
<b>WYOMING</b>		
Cody	4,872	Voted out 8-59 (590:414) after 3 years.
Sheridan	11,500	Voted out 11-53 (2732:907) after 4 years.

I wish to call attention to the fact that the sources from which this information were obtained are cited at the top of this advertisement.

MANNING A. SIMONS