

THE MARCH OF LABOR



THE TANNERS (PRESSERS OF WHITE LEATHER) ORGANIZED IN LONDON A GUILD IN THE 13TH CENTURY, ARRANGED FOR THEIR MEMBERS OLD AGE PENSIONS, QUALITY WORK STANDARDS, AND PROVISIONS FOR HELPING EACH OTHER WITH THEIR WORK.

EARLIEST CASE OF COURT INTERFERENCE
WITH A LABOR STRIKE—THE PHILADELPHIA SHOENAMERS' STRIKE IN 1806 WAS CHARGED WITH BEING A COMBINATION TO RAISE WAGES, AND WAS PROSECUTED.

IN 1901, 50 BUSINESS MEN OF SAN FRANCISCO ORGANIZED THE EMPLOYERS' ASSOCIATION, AND CREATED A FUND OF \$50,000, WHICH WAS LATER INCREASED TO \$250,000. IT DECLARED ITS DETERMINATION TO BOYCOTT EMPLOYERS RECOGNIZING ORGANIZED LABOR.

YOUR INSISTENCE ON UNION-LABEL PRODUCTS IS A CONTRIBUTION TO THE PROGRESS OF LABOR. TO BE CERTAIN THAT YOUR HAT IS UNION-MADE, LOOK FOR THIS LABEL UNDER THE SWEATBAND.

FILLING-STATION MEN ARE THE LOWEST-PAID OF THE OIL AND GASOLINE WORKERS—RECEIVING AN AVERAGE YEARLY INCOME OF LESS THAN \$900.

34

Central Labor Union Officers Send Christmas Greetings

To all locals affiliated with Charlotte Central Labor Union, and to the respective delegates of same as officers of that body we extend greetings, and wish for them and theirs a Merry Christmas and a Happy New Year. The co-operation during the year of the delegates and members has been wonderful, and our growth has been of a steady nature. Again a Merry Christmas and a Happy New Year.

J. A. SCOGGINS, PRES.
WM. S. GREENE, Sec.-Treas.

Christmas Card Was Invented By a Man With Many Friends



This is believed to be the first Christmas card. It was made in London in 1846.

CHRISTMAS cards are almost as much a part of Christmas as Santa Claus himself, yet they have been in use less than a century.

According to most records, the first Christmas card was designed in 1846 by Mr. J. C. Horsley, a prominent member of the Royal Academy of London. It was produced at the request of Sir Henry Cole, a popular man with many friends.

Sir Cole wondered how he could express his personal Christmas greeting to a thousand friends spread throughout England. After dismissing the thought of visiting each personally, or giving presents, he decided to send them each a card by mail.

One thousand hand colored cards were prepared with a picture showing a jolly family seated at a huge

dinner table. Each member of the family was looking into a brimming glass which he held in his hand.

When these cards were distributed, they raised a furor among temperance proponents throughout the country. The disturbance focused nation-wide attention on the new greeting card.

It was not until several years later, however, that the first lithographed Christmas card made its appearance. Originality was almost completely lacking. The greeting was invariably "A Merry Christmas" or "A Jolly Christmas." Designs seldom had anything to do with the season, but contained pictures of birds, flowers, animals or children.

America soon adopted the British custom, and the Christmas card was born.

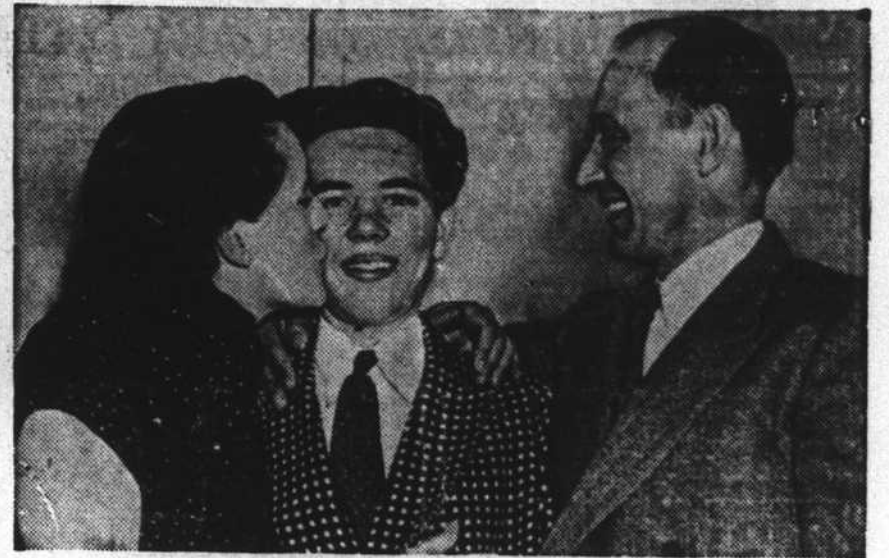
Put Proper Postage On Christmas Mail

Unsealed Christmas cards will carry for one and one-half cents postage. These cards may bear a simple inscription, which must not be in the nature of personal correspondence. Examples: "Sincerely yours," "With Best Wishes," "Merry Christmas." Be sure the weight

of the card and cover does not exceed two ounces.

Letters may not be enclosed with Christmas packages. Such enclosure would make the package first-class. In fourth class or parcel post packages, written greetings such as "Merry Christmas," with identifying names, may be enclosed. Books may bear simple non-personal dedicatory inscriptions. They are carried at a special rate of one and one-half cents per pound.

500,000 to 1 Shot Who Came Through



Anton Wrba, 17, is the center of attraction in the WRBA candy store in New York city. He is now pronounced as good as new after having had a bullet pass completely through his heart. The heart was quickly stitched, a blood transfusion of the boy's own blood was administered, and Anton lived! 499,999 other such cases would prove fatal.

SEASON'S GREETINGS FROM

R. D. McREE

GENERAL CONTRACTOR

2001 AVONDALE AVE.—PHONE 6353

SEASONS GREETINGS

CAROLINA FINANCE CO.

201 Wilder Bldg.

Over Western Union

LOANS To Employed People on Signature Only—
Confidential Personal Loans
\$5.00 TO \$50.00

NO ENDORSERS

NO COLLATERAL

SEASONS GREETINGS

Dixie Spindle & Flyer Co., Inc.

1906 N. Brevard

Charlotte, N. C.

SEASONS GREETINGS

HUTTIG SASH & DOOR CO.

200 EAST BLAND ST.

PHONE 2-2146

Charlotte, N. C.

SEASONS GREETINGS

COOK'S SAUSAGE CO.

S. B. Cook, Manager

831 South Blvd.

Phone 3-8606

Manufacturers of Wieners, Bologna and Pure Pork Sausage
Catering to Hotels and Restaurants

Always a better deal at Pettit's

PETTIT MOTOR CO.

SALES



SERVICE

515 E. 4TH ST.

PHONE 8157

SEASONS GREETINGS

Renfrow Tile & Marble Co., Inc.

701 Central Ave. Phone 3-3621
Charlotte, N. C.

SEASONS GREETINGS

COOKE GROCERY

Joseph W. Cooke, Jr.

845 N. Church St. Phone 2-1578

Groceries and Meats—
Prompt Delivery Service

Patronize Journal Advertisers

DeVONDE Synthetic

CLEANERS — DYERS
HATTERS — FURRIERS

SEVEN POINTS WHY WE ARE
ONE OF THE SOUTH'S LEADING
SYNTHETIC CLEANERS

- 1 Restores original freshness and sparkle.
- 2 Removes carefully all dirt, dust and grease.
- 3 Harmless to the most delicate of fabrics.
- 4 Odorless, thorough cleaning
- 5 Garments stay clean longer
- 6 Press retained longer
- 7 Reduces wardrobe upkeep

CALL 3-5125
304 N. Tryon St.

SEASON'S GREETINGS
ATLANTIC MARBLE & TILE CO., Inc.

Established 1908

OFFICE AND WAREHOUSE—220-222 SOUTH POPLAR STREET

Telephone 5489

J. R. MARUS, President and General Manager

Compliments of
A FRIEND

SEASONS GREETINGS FROM

Hatch Full Fashioned Hosiery Co.

BELMONT, N. C.

SEASONS GREETINGS FROM

THE COLE MANUFACTURING CO.

CHARLOTTE, N. C.

Largest Plant in the World Exclusively Devoted to Making
Improved Labor Saving Seed Planters
and Fertilizer Distributors

SEASONS GREETINGS

CHARLOTTE THEATRE

"Where all ages meet for enjoyable relaxation"

123 W. Trade St.

Charlotte, N. C.

SEASONS GREETINGS

EAGLE STORES CO., INC.

CHARLOTTE, N. C.

SEASONS GREETING SFROM

MORGAN HEATER COMPANY

M. J. MORGAN, Treas., Mgr.

601 SOUTH CEDAR

PHONE 3-8874

CHARLOTTE, N. C.

SEASONS GREETINGS FROM

Mutual Building and Loan Ass'n

E. Y. KEESLER, Sec'y-Treas.

119 E. 3rd St.

Charlotte, N. C.

PATRONIZE JOURNAL ADVERTISERS

SEASONS GREETINGS

**PURE OIL CO.
OF THE CAROLINAS, INC.**

OFFICE

921 SO. TRYON ST. AT MOREHEAD

CHARLOTTE, N. C.