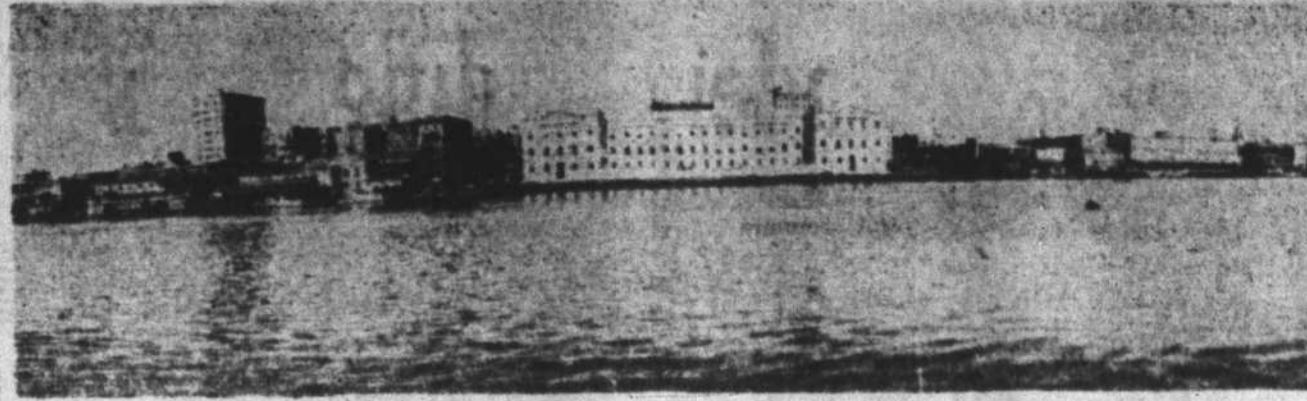


GREETINGS
ISENHOUR BRICK & TILE CO., Inc.
 PHONE 3966
 SALISBURY, N. C.



WATERFRONT AND SKYLINE, WILMINGTON, N. C.

HOLIDAY GREETINGS
BLATZ
 Milwaukee's First Bottled Beer"
 Blatz Brewing Co., Est. 1851
 PEACOCK BEV. CO., DISTRIBUTORS
 SALISBURY, N. C.

CHRISTMAS GREETINGS
CONCORD BOTTLING COMPANY
 CONCORD, N. C.

SEASON'S GREETINGS
 TO OUR FRIENDS
M & J FINANCE CORPORATION

WE WISH EVERYONE
 A MERRY CHRISTMAS AND
 A HAPPY NEW YEAR
CITIZENS BUILDING AND LOAN ASSOCIATION
 Sponsors Of
HOME OWNERSHIP AND THRIFT
 Phone 6142
 CONCORD, N. C.

MERRY CHRISTMAS—HAPPY NEW YEAR
 ★
RAY KLUTTZ
 EXCAVATING — GRADING
 ROAD BUILDING — MAINTENANCE
 Phone 32-Z—China Grove, N. C.
 Mail: Route 7—Box 465
 Phone 49
 SALISBURY, N. C.

WILMINGTON, N. C. PORT AND RESORT CENTER

Wilmington is the leading port city for North Carolina, located on the east bank of the Cape Fear River, about 30 miles from the Atlantic Ocean.

The first settlement was made here in 1730, and in 1800 it was a village with a population of 1,689. Evidence of its progressiveness lies in its increased population to 33,401 in 1910, and today it is estimated to be a city of 50,000.

Industrially, Wilmington possesses a well-balanced economy with 120 manufacturing firms producing a well diversified line of finished goods. It is an important center for the manufacture of fertilizer, wood and wood products, cotton goods, creosoted products, hosiery, neckties, other chemical products, etc. Wilmington is the second largest distribution point on the Atlantic seacoast for bulk petroleum products.

Its retail trading area extends inland for seventy-five miles, with a population of 275,000. Its wholesale area covers a radius of 150 miles and has a population of 385,000.

Wilmington is easily accessible by air, land, water and rail. It is served by two railroads, five freight trucking companies, the Inland waterway, three highways, bus lines and passenger and freight airlines.

The Port of Wilmington is 174 miles northeast of Charleston, South Carolina, and 412 miles south of Norfolk, Virginia. The harbor of the city occupies the entire width of the Cape Fear River and extends south from a point about one mile north to Hilton Bridge, to about two miles below the south boundary of the city and about 30 miles to the ocean bar.

A depth of 30 feet at mean low tide is available across the bar and up the river to Wilmington. Contemplated Federal waterway project for Cape Fear River will increase the depth to 35 feet. Fifty-seven wharves of various lengths and depths are in operation at Wilmington. Ocean terminals have a capacity of 635,000 square feet and can serve 11 steamers and 165 cars. These terminals are equipped to handle and expedite general cargoes with dispatch via water, rail and motor carriers. Wilmington's harbor channel is navigable throughout the year.

The imagination and interest of tourists and vacationists are captured by Wilmington's natural beauties, famous gardens and plantations, beautiful Greenfield Lake in the heart of the city, its historic ruins and landmarks, sport fishing grounds and miles of excellent ocean beaches.

Its mild southern climate allows for year-round activity at nearby beaches, exciting exercise in the Gulf Stream for game fish, and for spring garden tours when the azaleas and camellias burst into bloom at beautiful Orton and Airline plantations, and with thousands of such plants unfolding a panorama of riotous color at scenic Greenfield Lake studded with old cypress trees covered with Spanish moss.

Wilmington has many famous historical buildings and landmarks, including British General Cornwallis' Revolutionary War Headquarters. Several of the oldest churches in America, the church where Woodrow Wilson worshipped as a youth, the site birthplace of Whistler's mother, historic Fort Fisher, Orton Plantation and its magnificent old mansion built in 1725.

Wilmington is the center of one of the greatest farm producing centers in the United States. In the area are located the principal tobacco, corn, potato, soybean, strawberry, lettuce and peanut producing counties of North Carolina. The nearby Castle Hayne district is world-famous for its millions of beautiful daffodils and gladioli. Cut flowers from these fields are sold throughout the United States.

In addition to its famous fishing grounds where an annual fishing rodeo is held each fall from September 15 through October 31, with thousands of dollars in cash prizes for the best fish caught, Wilmington is blessed with excellent schools, and churches of all denominations, parks and playgrounds well kept, swimming, golfing, sailing, boating and riding. Wilmington and its beaches has many ho-

tels and cottages which maintain moderate prices.

Wilmington is an ideal location for new industrial branch plants. It has many excellent land sites for manufacturing purposes. Skilled and semi-skilled labor is readily available, and there are ample housing facilities for industrial employees.

Wilmington is proud of its excellent health facilities, including its medical center, modern hospitals, prominent doctors, dentists, and surgeons. Its excellent mild climate makes for a healthy place to live.

He'll Be Gone A While
 Patient—"Is the doctor in?"
 Maid—"No, sir."
 Patient—"Have you any idea when he'll be back?"
 Maid—"I don't know, sir. He went out on an eternity case."

Declare your independence by buying Independence Bonds.

give to **National Cancer Foundation**

The National Cancer Foundation is the only non-profit social service organization devoted exclusively to helping advanced cancer sufferers by contributing toward expenses incidental to this illness. The cost is great... **THE NEED IS GREATER**

NATIONAL CANCER FOUNDATION Inc.

JOY
 "For the joy that was set before Him,"
 He was born at Bethlehem.
 King Herod's soldiers were savage and grim,
 But God safeguarded our Lord from them.
 "For the joy that was set before Him,"
 He wrought in Galilee,
 Healing the mind and body and limb;
 Making the blind to see.

"For the joy that was set before Him,"
 He endured that Roman cross;
 Anguished till vision of soul grew dim,
 To redeem mankind from loss.
 "For the joy that was set before Him,"
 Victor o'er Death's dark prison;
 He arose while angels chanted their hymn,
 "The Son of God is risen."

SEASON'S GREETINGS
THE PACKAGE STORE
 BEER—By Can or Case
 Cannon Boulevard—Jackson Park
 Next to N. B. Sills Real Estate Office
 KANNAPOLIS, N. C.

SEASON'S GREETINGS
BILL MULL
 "Your HOTPOINT Dealer"
 204 Oak Street
 KANNAPOLIS, N. C.

HOLIDAY GREETINGS
KANNAPOLIS BAKERY
 "GOLDEN CRUST BREAD—TASTY CAKES"
 Telephone 805
 Cannon Boulevard
 KANNAPOLIS, N. C.

MERRY CHRISTMAS—HAPPY NEW YEAR
P. C. WOOD & SON
 BUILDERS AND CONTRACTORS
 Phone 497
 1204 S. Main
 KANNAPOLIS, N. C.

SEASON'S GREETINGS
 We Feature:
KELVINATOR RANGES, REFRIGERATORS AND FREEZERS
MURRAY'S
 "Where Service Follows Sales"
 Phone 1060
 KANNAPOLIS, N. C.

SEASON'S GREETINGS
YADKIN BRICKYARDS
 (New London, N. C.)
 Furnished All
HANDCRAFT COLONIAL BRICK
 In Kannapolis, N. C.

SEASON'S GREETINGS
 From
CHIPMAN-LACROSSE HOSIERY MILLS COMPANY
 EAST FLAT ROCK, N. C.

CHRISTMAS GREETINGS
BEAUNIT MILLS, INCORPORATED
 Rockingham Road
 ROCKINGHAM, N. C.

SEASON'S GREETINGS
AUSTIN HOSIERY MILL
 Incorporated
 Manufacturers of
FULL FASHIONED HOSIERY
 ALBEMARLE, N. C.

SEASON'S GREETINGS
 From
ROY M. HOMEWOOD
 CONTRACTOR
 Member of the Associated General Contractors of America, Inc.
 CHAPEL HILL, NORTH CAROLINA