

# In the World of Sport

## IF THE G. O. P. ELEPHANT COULD SPEAK THE TRUTH

Voters of the U. S. A.—

We, the Republican party, being at our wits' end, and desperate, put it up to you:

For nearly four years now a Democratic administration has been in power. Contrary to every law of reason, every principle of progress, the country is at peace and alive—nay, humming with prosperity. Business is rushing. Wages are high. The only discontent is the discontent of those who are reaching for bigger chunks of plenty.

We are flabbergasted. All this has happened during a period when the rest of the world has been agog, when international crises were impending on all sides, when we would have sworn only Republican statesmanship could pull the nation through.

No war has engulfed us. No panic has paralyzed us. No nation has with impunity continued to infringe upon our rights.

We can't deny what has been done. All we can do is take our oath we could have done it better. How, we do not know. If only we said it loud and long enough we hoped the country would believe us.

But the country is busy, and our votes grow hoarse. We are having a hard time.

Woodrow Wilson has nothing to show us but what he has accomplished. He has none of the glamour of the what-might-be. We, on the contrary, have our old promises and policies, mellowed by age, but still bearing the stamp of the nation's solid interests. Protection, privilege, government by influence—surely the country has not given them their last trial.

Wall street is with us. Big business is with us. But, oh, voters, we confess it, we need you. Don't keep looking at the peace and prosperity around you. Try to get our point of view. What ever Wilson has done, the man is a Democrat, and neither federal government nor federal offices were meant to be forever in such hands.

Let's forget issues and talk as friends. Turn him out and give us a chance!

increasing their shipbuilding force. The congestion of building on the Clyde has also led to applications to the Harbor Board for accommodation in Belfast.

### Miss Alderman's School

Mary L. Alderman, Prin.

FALL TERM BEGINS MONDAY, OCT. 2nd.

Boys and girls prepared for business or college.

Special attention paid to backward children.

For particulars apply to Principal.

No. 12 North 5th Street.

### J. B. McCABE & CO.,

Certified Public Accountants.

Room 815 Merchants Bank Bldg. Phone: 996. WILMINGTON, N. C.

### ATLANTIC COAST LINE

The Standard Railroad of the South

#### EXCURSION FARES

From Wilmington OPEN TO THE PUBLIC.

WASHINGTON	\$18.00
BALTIMORE	18.00
PHILADELPHIA	22.50
NEW YORK	26.00
BOSTON (via Norfolk)	30.50
ASHVILLE, N. C.	14.00
WAYNESVILLE, N. C.	15.35
LAKE TOXAWAY, N. C.	15.75
BREVARD, N. C.	14.95
HENDERSVILLE, N. C.	14.05
SALUDA, N. C.	15.50
TRYON, N. C.	15.20

Tickets on sale every day until Sept. 30, good to stop over, limited returning until Oct. 31.

Tickets on sale September 26, limited returning until October 6.

\$11.50 Ft. Myers, Fla.  
\$33.05 Cleveland, Ohio

Account Annual Convention Brotherhood of St. Andrew. Tickets will be sold October 1, 2 and 3, limited returning until October 12.

\$50.05 Des Moines, Iowa.

Account National Churches of Churches of Christ. Tickets will be sold October 6, 7 and 8, limited returning until October 20.

\$20.50 Cincinnati, Ohio.

Account Laundrymans National Association of America. Tickets will be sold October 7, 8 and 9, limited returning until October 16.

\$3.40 Goldsboro, N. C.

Account Wayne County Fair. Tickets will be sold October 9 to 13, inclusive, limited returning until October 15.

\$31.30 Springfield, Mass.

Account National Dairy Association. Tickets will be sold October 12, 13, 14 and 15, limited returning until October 25th.

\$20.95 Jacksonville, Fla.  
\$21.45 State Camp, Fla.

Account the following important National events:

Southern Rifle Association, October 11 and 12.

National Rifle Association, October 13 to 19.

National Rifle Practice, October 20 and 21.

National Individual Rifle Match, October 23.

National Pistol Match, October 24.

National Team Match, October 24 to 26.

Tickets will be sold to Jacksonville and return September 16, 17, 18, 23, 24, 25, 30; October 1 and 2 and to State Camp and return October 7, 8, 9, 14, 15 and 16. All tickets will be limited returning until November 4, 1916. Reduced fares for parties of ten or more traveling together.

\$4.85 Raleigh, N. C.

Account 56th N. C. State Fair. Tickets will be sold October 19 to 21, inclusive, limited returning until October 23rd.

### SOUTHERN RAILWAY

Effective Monday September 11th, 1916 Southern Railway announces the present Winston-Salem — Beaufort-Moorehead City Pullman Sleeping Car line will be shortened to Winston-Salem—Goldsboro Pullman Sleeping Car line. This car will leave Winston-Salem at 8:50 p. m., same as at present and arrive Goldsboro following morning, returning car will leave Goldsboro 10:35 P. M., arriving Winston-Salem following morning.

Present Greensboro-Raleigh Pullman Sleeping Car line will continue to operate.

For full details, reservations, etc., address,

J. O. JONES,  
Traveling Passenger Agent,  
Raleigh, N. C.  
The Southern Serves the South.

### Last Excursion

Of The Season To Asheville, N. C.

"THE LAND OF THE SKY," THURSDAY, SEPTEMBER 28, 1916, Via

### Southern Railway

Schedule and Round Trip Fares as Follows:

Lv. Goldsboro	6:45 a. m.	\$5.00
Lv. Selma	7:40 a. m.	5.00
Lv. Raleigh	8:52 a. m.	4.75
Lv. Durham	9:50 a. m.	4.75
Lv. Henderson	7:00 a. m.	4.75
Lv. Oxford	7:40 a. m.	4.75
Lv. Burlington	11:12 a. m.	4.75
Lv. Greensboro	12:30 p. m.	4.75

Arrive Asheville 8:00 p. m.

Round trip fares in same proportion from all intermediate points.

Returning tickets will be good on all regular trains leaving Asheville up to and including trains leaving Asheville Sunday, October 1st, 1916.

#### A DAY TRIP THROUGH THE MOUNTAINS

THREE DAYS IN ASHEVILLE

Giving ample time in which to visit the numerous points of interest in the "LAND OF THE SKY."

Most Delightful in the Mountains at This Season.

For further information ask Southern Railway Agents, or

J. O. JONES,  
Traveling Passenger Agent,  
Raleigh, N. C.

9-18 to 9-28

## Suburban Schedule

EFFECTIVE SEPTEMBER 5, 1916.

Leave Wilmington	6:35 A. M.	Leave Beach	6:40 A. M.
6:55 "	"	7:10 "	"
7:15 "	"	7:30 "	"
7:35 "	"	7:50 "	"
7:55 "	"	8:15 "	"
8:15 "	"	8:35 "	"
8:35 "	"	8:55 "	"
8:55 "	"	9:15 "	"
9:15 "	"	9:35 "	"
9:35 "	"	9:55 "	"
9:55 "	"	10:15 "	"
10:15 "	"	10:35 "	"
10:35 "	"	10:55 "	"
10:55 "	"	11:15 "	"
11:15 "	"	11:35 "	"
11:35 "	"	11:55 "	"

\* Duty except Sunday. 1 Sunday only x Saturdays Only.

#### FREIGHT SCHEDULE

Daily Except Sundays

Leave Ninth and Orange Streets 9:30 A. M.; Leave Beach 12:15 P. M., 3:15 P. M.

Freight Office Open from 8:00 A. M. to 9:30 A. M. and from 2:00 P. M. to 3:30 P. M.

#### SUNDAYS

Leave Ninth and Orange Streets 11:00 A. M.; Leave Beach 12:45 P. M.

Freight Office Open Sundays from 10:00



## To New York and Georgetown, S. C.

NEW YORK TO WILMINGTON.

S. S. Onondaga.....Friday, Sept. 22nd  
S. S. Onondaga.....Tuesday, Oct. 2nd

WILMINGTON TO GEORGETOWN.

S. S. Onondaga.....Monday, Sept. 25th  
S. S. Onondaga.....Friday, Oct. 6th

WILMINGTON TO NEW YORK.

S. S. Onondaga.....Friday, Sept. 29th  
S. S. Onondaga.....Tuesday, Oct. 10th

S. S. Onondaga DOES NOT carry passengers.

Freight accepted from and for near-by North Carolina points at advantageous rates.

CLYDE STEAMSHIP CO.,  
C. J. BECKER, Agents,  
Wilmington, N. C.

## ATLANTIC COAST LINE

Arrivals and Departures of Trains at Wilmington, Effective Sept 11, 1916. Time Not Guaranteed.

DEPARTURE:	TO AND FROM	ARRIVALS:
No. 90. 8:40 A. M. Daily Except Sunday.	Goldsboro, Richmond, Norfolk and Eastern North Carolina points. Connects at Goldsboro with Southern Railway at Norfolk Southern Railroad.	No. 91. 1:10 A. M. Daily Except Monday.
No. 64. 8:15 A. M. Mon., Wed. and Friday Only.	Jacksonville, New Bern and Intermediate Stations.	No. 65. 6:15 P. M. Mon., Wed. and Friday Only.
No. 51. Daily. 6:30 A. M.	Savannah, Conway, Florence, Charleston, Savannah, Jacksonville, Tampa St. Petersburg, Fort Myers Columbia and Asheville. Pullman Sleeping Cars between Wilmington and Columbia, open to receive outboard passengers at Wilmington at and after 10:30 P. M. and may be occupied, in-bound until 7:00 A. M.	No. 5. Daily. 12:30 A. M.
No. 48. Daily. 8:40 A. M.	Goldsboro, Richmond, Norfolk and Washington. Parlor Cars between Wilmington and Norfolk connecting at Rocky Mount with New York trains having Pullman Service.	No. 49. Daily. 6:05 P. M.
No. 53. Daily. 8:45 A. M.	Solid train between Wilmington and Mt. Airy via Fayetteville and Sanford.	No. 52. Daily. 8:00 P. M.
No. 62. Now Daily. 8:55 P. M.	Jacksonville, New Bern and Intermediate Stations.	No. 63. Daily. 12:30 P. M.
No. 55. Daily. 8:45 P. M.	Chadron, Florence, Columbia, Augusta, Atlanta and the West. Charleston Savannah and all Florida Points. All Steel Pullman Sleeping Cars between Wilmington and Atlanta, via Augusta. Sleeping Cars daily between Florence and Columbia, which may be occupied at Columbia until 7:00 A. M.	No. 54. Daily. 12:50 P. M.
No. 59. Tues., Thurs. and Sat. Only. 6:30 P. M.	Fayetteville and Intermediate Stations.	No. 60. Tues., Thurs. and Sat. Only. 10:15 A. M. Daily.
No. 42. Daily. 6:45 P. M.	Goldsboro, Richmond, Norfolk, Washington and New York. Pullman Brother, McNet Sleeping Cars, between Wilmington and Washington connecting with New York trains carrying dining cars; also Pullman Sleeping Cars between Wilmington and Norfolk.	No. 41. Daily. 9:30 A. M.

For Folder, Reservations, rates of fares, etc., call "Phone 160, W. J. CRAIG, Passenger Traffic Manager. T. C. WHITE, General Passenger Agent. Wilmington, N. C.

### NATIONAL LEAGUE

Results Yesterday.

Pittsburgh 1; Cincinnati 0.  
Brooklyn 2; Chicago 0.  
New York 3; St. Louis 2.  
No other scheduled.

#### STANDING OF THE CLUBS.

Philadelphia	Won. 90	Lost. 57	Pct. .612
Pittsburgh	87	57	.604
Brooklyn	84	58	.592
New York	82	62	.569
Cincinnati	65	85	.433
Chicago	65	85	.433
St. Louis	60	91	.397
Washington	57	93	.380

### AMERICAN LEAGUE

Results Yesterday.

At Philadelphia 3; Washington 13.  
At Boston 3; New York 2.  
No others scheduled.

#### STANDING OF THE CLUBS.

Boston	Won. 88	Lost. 60	Pct. .595
Chicago	86	64	.573
Detroit	85	66	.563
New York	76	72	.513
St. Louis	78	73	.516
Cleveland	77	73	.513
Washington	74	74	.500
Philadelphia	34	114	.230

### MINOR LEAGUES.

#### American Association.

At Louisville 6-5; Indianapolis 8-0.  
At Columbus 15; Toledo 7.  
At Kansas City 4; St. Louis 6.  
At Milwaukee-Minneapolis, rain.

## TEN NEW CHARTERS A DAY'S WORK

### State Was Busy Giving New Enterprises a Boost On Yesterday

Raleigh, N. C., Sept. 28.—Ten charters were issued yesterday from the office of the Secretary of State, the largest number in one day for several years.

Their combined capital, authorized, reaches nearly three-quarters of a million, \$675,000 to be exact. They are varied in their scope.

The Jeffreys-Myers Manufacturing Company of Oxford pays \$15,000 of its \$50,000 and will buy timber, manufacture it into boxes, etc., and do a general lumber business. The subscribers are the six Jeffreys, R. L. W. H. Jr., R. M., S. B., A. L., H. P. and H. E. Jeffreys, and J. H. L. Myers of Chase City, Va.

The National Development Company of Greensboro, \$100,000 authorized and \$39,000 subscribed, by J. M. Millikan, George Penny and F. A. Silver, of Greensboro, acquires lands, improves buildings, etc.

The Art Furnishing and Realty Company of High Point will deal in all sorts of antique furnishings, rugs, carpets, silverware, and starts with \$1,600 of its \$25,000 subscribed by B. H. Bradner, O. R. York, C. F. Williams and J. E. Wagner, High Point.

The Martin Memorial Hospital, of Mount Airy, Surry county, is chartered to own and operate a hospital and sanatorium. Thirty-five thousand is subscribed, \$20,100 paid in by M. S. Martin and Emma Martin and Evelyn Martin Divers, of Mt. Airy, and George T. Divers, of the same place.

Atkinson & Watters, Inc., Wilmington, deals in general merchandise with \$4,000 of its \$125,000 paid in by W. M. Atkinson, Waddell Watters and John D. Bellamy, Jr.

The Caldwell Publishing Company is the enlarged News, edited by Fred May. Its authorized capital is \$25,000, that paid in \$1,000. The subscribers are Fred H. May, R. C. May and Eula R. May.

The Piedmont Oil Company of Gastonia, will buy, sell, manufacture and otherwise deal in oils, coal, etc., with \$100,000 limit, \$10,000 paid in by W. T. Rankin, S. S. Shuford, C. B. Armstrong, W. H. Adams and George W. Wilson, Gastonia.

The DeRhodes Company, of Hickory, does a general tinning, roofing and manufacturing of supplies upon \$2,000 of its \$25,000 capital paid in by J. C. and M. E. DeRhodes and R. B. Blackwelder.

The Ranford Knitting Mills, of Hickory, engaging in all sorts of fabrics manufacture, starts a business of \$100,000 on \$8,200. It is paid in by E. L. Shuford, H. W. Harris and L. W. Poover.

The Cozart Motor Sales Company is a Greensboro company, capitalized at \$100,000, with \$10,000 paid in. A. B. Cozart, John Baner and C. W. Love back it.

The new Soldiers' Home arrangement starts off with a passionate kick

## PRaises Wilson's Stand IN BEHALF OF SUFFRAGE

The action of the National Woman Suffrage association at Atlantic City, N. J., in rejecting by an overwhelming vote, the proposal to make the suffrage movement a partisan annex of the Republican campaign was further emphasized by Dr. Anna Howard Shaw, "the sage of suffrage," in an interview published in the Philadelphia Press, a staunch Republican organ.

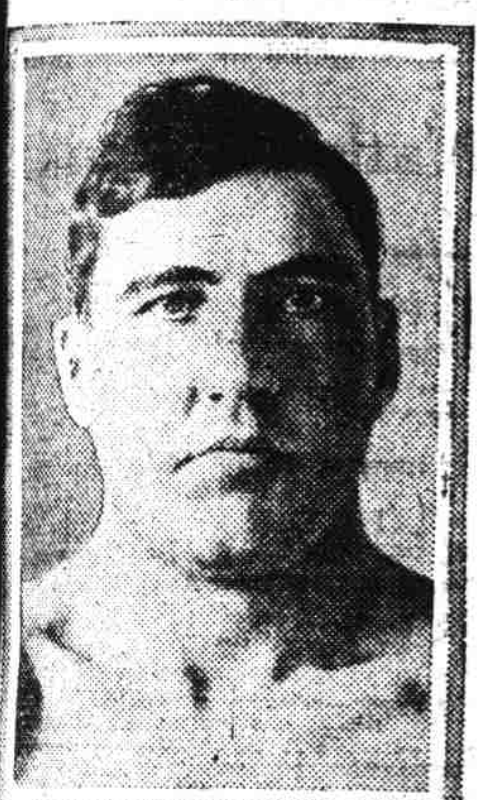
"The president in his speech to the convention promised all he could carry out," said Dr. Shaw. "If he had promised more we would have known that he could not carry it out.

"Not the Republicans alone, nor the Democrats alone, can bring suffrage. If it could be done that way I would favor it. But it can't. We must get enough Democrats and Republicans together to do it."

## BELFAST MAKING READY FOR BOOM

Belfast, Ireland, Sept. 28.—Belfast is preparing for a boom in shipbuilding after the war. Harland and Wolff's have just leased from the Harbor Board, forty-one acres of additional land at a cost of 2,500 pounds a year. Workman & Clark's are also

## WILLARD READY FOR CHALLENGER MAY FIGHT THIS WINTER



JESS WILLARD

Within a month Jess Willard will have terminated his contract with the public and will be ready to listen to challenges from heavyweights who think they can wrest the championship title from him, he announces.

It is expected that Fulton, Weimert, Harris and Jack Dillon soon will be getting defies in the direction of Willard and it is quite possible that one of these will be accepted. Willard is not keen about the fighting game, it is said, but he will be compelled to fight one or two of his challengers this winter if he is to keep his name before the public.

## WILLARD SAID TO HAVE BEEN AT SANTA CLARA

Field Headquarters in Mexico, Sept. 27. By Radio to Columbus, N. M., Sept. 27.—Francisco Villa, with 600 men was at Santa Clara, 30 miles east of Maniquita, on September 22, for the immediate purpose of capturing the transportation facilities here and later with the idea of striking north and invading Texas, according to a report of the leaders' movement received at field headquarters.

## JAPAN MAKES STRIDES IN SHIP BUILDING

Tokio, Sept. 28.—The strides of Japan in shipbuilding since the beginning of the war are shown by the official announcement that 28 steamships with a total tonnage of 192,000 were launched during the first half of the current year. Nine steamers with a total tonnage of 23,950 are expected to be completed during the second half of the year.

## THIS DAINTY WOMAN A REAL FOOTBALL COACH



MRS. EARL BRANNON

Jonesboro, Ark., Sept. 28.—The Jonesboro Agricultural College has the only woman football coach in the country. It is believed. She is Mrs. Earl W. Brannon, who will coach the "second" team, while her husband performs the same duties for the "first" eleven.

Mrs. Brannon has assisted her husband in coaching for the past two years. He says she knows as much about the game as he does and that her theories, while differing from his own, have worked out to advantage.

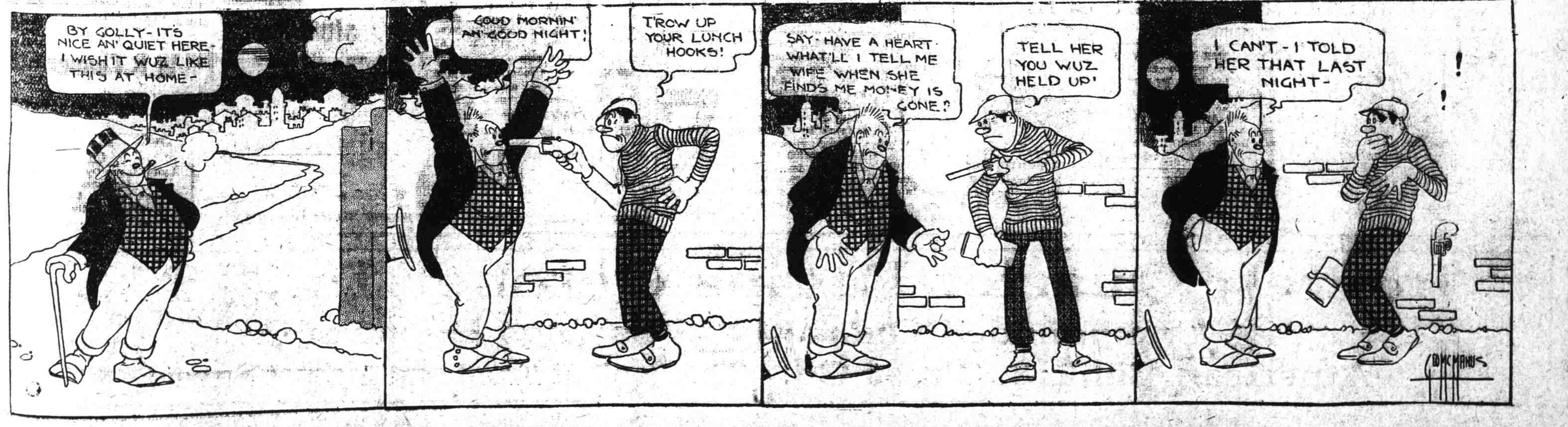
She will develop the style of play to be used by her charges without any help or advice from the outside.

Mrs. Brannon is a graduate of the University of Nebraska, where she was intensely interested in the gridiron game. It was a mutual interest in football that led to the meeting with her husband, who also is a Nebraska graduate.

She does not like golf, tennis, basketball or any of the milder sports, preferring the more rugged games, although she is a distinctly feminine type and weighs but 115 pounds.

And—score one for the anti—she is opposed to woman suffrage.

## BRINGING UP FATHER



BY McMANUS