

Market Review, Marine and Weather News

COTTON. Wilmington Spot 24.58, Charleston Spot 26.00, Norfolk Spot 24.63, Savannah Spot 26.14

New York, July 5.—There was renewed liquidation in the cotton market at the re-opening today. Private wires reported good rains in the southwest over the holiday which encouraged the bearish sentiment that had developed toward the end of last week and first prices were 38 to 92 points lower with October selling at 24 3/4 and January at 24 1/4 on the call.

High, Low, Close. July 23.17 24.75 25.00, October 24.82 24.20 24.53, December 24.90 24.26 24.75, January 24.90 24.26 24.75, March 25.06 24.50 24.94

NEW ORLEANS SPOT. New Orleans, July 5.—Cotton sold 64 to 74 points in the first half hour of business here today, under liquidation and short selling encouraged by improved crop reports from the belt and generally from Texas that the west generally had received complete relief from the drought. The market was barely steady at the decline.

Opening, Closing. Wheat July 2.09 2.09, Sept 1.84 1.89-1.2, Corn July 1.60 1.62-1.3, Sept 1.49 1.54-1.3, Oats July .66 .67-5.8, Sept .55 1.4 .56-1.4

ON THE BOURSE. Paris, July 5.—Prices were irregular on the bourse today. Rentes 60 francs 25 centimes.

STEADY INCREASE OF THE COUNTRY'S MONEY. Washington, July 5.—The average man in the United States has \$11.51 richer today than he was three years ago. Total money in circulation, shown in a chart in the July Federal Reserve bulletin, has risen from \$3,490,000,000 on June 1, 1914, to \$4,742,600,000 on June 1, 1917. The circulation per capita in 1917 was \$24.35, in 1915, \$23.44; in 1916, \$23.29 and in June, 1917 was over \$24.36.

LOCAL MARKETS. WHOLESALE PRICES. Eggs 33c, Butter 30c, Spring chickens 25c, Puddle Ducks 50c, Guinea, apiece 50c, Beef 11c, Irish Potatoes 12c, N. C. Hams, pound 26c, Pork, per lb. 25c, Cabbages (100 lbs.) 15c, Hides, Green 20c, Wool, free of burr 22 to 25c, Corn, bushel 25.05, Bee's Wax .32c, Salted Hides .18c, Tallow .50c, Wool, burr .45c, Cantaloupes, crate \$2.25, Peaches, crate \$2.25

WILMINGTON NAVAL STORES. Sprits—\$6. Rosin—\$4.70 and \$4.50. Tar—\$3.50 and 16 cents. Crude—\$3.50, \$3.50 and \$2.50.

SAVANNAH NAVAL STORES. Savannah, July 5.—Turpentine, firm 37; sales, none; receipts 849; shipments, 530. Stock 21,733. Rosin firm, sales, none; receipts 2,207; shipments 2,150; stock 67,511. Quote—B, 5.20; D, 5.25; E, 5.35; F, 5.40; G, 5.45; H, 5.45 to 5.60; I, 5.47 to 5.60; K, 5.60 to 5.60; M, 5.85 to 5.90; N, 6.75; WG, 6.60 to 6.85; WVW, 7.05.

CHICAGO GRAIN. Chicago, July 5.—Soaring prices for corn today took quickly of continued scarcity of supplies and of urgent demand. Opening quotations which ranged from 7-8 off to 5-8 advance with July at 1.60 and September at 1.49 3/4 to 1.50 1/2, were followed by a sharp general upturn to about two cents above Tuesday's finish.

SUGAR. New York, July 5.—Raw sugar, easy; centrifugal 6.46; molasses 5.58; refined steady; fine granulated 7.50 to 8.00. Sugar futures were easier today on selling by commission houses, prompted by the easier feeling in the spot market. At noon prices were 4 to 5 points lower.

STOCKS. New York, July 5.—(Wall Street)—Resumption of trading after the holiday was accompanied by general firmness in most of the leaders and decided strength in speculative issues, motor again proving the exception. Equipments and shippings were in fair demand with gains of 1 to 1-2 for Baldwin Locomotive, Crucible Steel, Marine preferred, Atlantic, Gulf and West Indies, Ohio Gas and Sinclair Oil. Tobacco supplemented their gains of the early week, and industrial alcohol rose four points. Rails and metals were fractionally higher with United States Steel.

American Beet Sugar .94 7-8, American Can .48 1-2, American Car & Foundry 76, American Locomotive 76, American Smelting & Refg. 105 1-8, American Sugar .118, American Tel. & Tel. 120, Anaconda Copper 79 1-4, Atchison .100, Atlantic Coast Line (B) 108, Atl. Gulf & W.I.S.S. Lines .104, Baldwin Locomotive 70 3/4, Baltimore & Ohio 69 5-8, Bethlehem Steel "B" 135 1-2, Canadian Pacific 158 1-2, Central Leather 93 1-8, Chesapeake & Ohio 59 1-8, Chicago and Great Western 11, Cigar, Mil. and St. Paul 66 1-4, Chgo. R.I. Pac. when issued 33 1-4, Colorado Fuel & Iron 50 1-2, Corn Products 33 1-2, Crucible Steel .86, Cuba Cane Sugar 41 1-2, Erie .24, General Electric 158 1-8, General Motors 114 1-2, Great Northern Pfd Ex. Div. 101 1-4, Great Northern Ord. 30 5-8, Gulf State Steel 125 1-8, Illinois Central 103, Inspiration Copper 61 5-8, Int. Merc. Marine 26 3-4, Int. Merc. Marine pfd 81 5-8, International Nickel 40, International Paper 35 3-8, Kansas City Southern 21, Kennecott Copper 44 1-4, Louisville and Nashville 125, Mexican Petroleum 97 1-2, Midvale Steel 60 3-4, Missouri Pacific 28 5-8, Neyada Consolidated 87 3-4, New York Central 35 3-4, N. Y. N. H. & Hartford 67 1-4, Norfolk and Western 123 1-8, Northern Pacific 99 3-8, Ohio Cities Gas 124 1-2, Pennsylvania 52, Ray Consolidated Copper 28 1-4, Reading 92 5-8, Rep. Iron and Steel 91, Seaboard Air Line (bid) 28, Seaboard Air Line pfd (bid) 28, Sinclair Oil and Refining 44 1-4, Sloss, Shef. Steel and Iron 57, Southern Pacific 91 1-4, Southern Railway 25 5-8, Southern Railway pfd 54 1-4, Studebaker Corporation 55, Tennessee Copper 17 1-4, Texas Co. 211 3-4, Union Pacific 132 7-8, United Fruit 133, U. S. Ind. Alcohol 154 1-2, United States Rubber 126 3-8, United States Steel 117 1-2, United States Steel pfd 108 1-2, Utah Copper 42 3-4, Virginia Caro. Chem. 42 3-4, Virginia Coal and oke 69 1-2, Washash Pfd. "AA" 48 3-4, Western Union 92 1-4, Westinghouse Electric 49 7-8

PERSONAL MENTION. Mr. John A. Livingston, of the State Bureau of Markets, has returned to Raleigh, after spending the holiday here yesterday.

STAGE OF WATER. Stage of water in the Cape Fear river at Fayetteville, N. C., at 8 a. m. yesterday, 7.7 feet.

DEATH OF MR. LEE. Passed Away at His Red Cross Street Residence Early This Morning. Many friends will regret to learn of the death of Mr. Richard Henry Lee, aged 68, which occurred at his home No. 331 1-2 Red Cross street, this morning at 1:30. Mr. Lee's illness was not of long duration and came as a distinct shock to his many friends.

FAMILY ROW IN COURT. Petitioner For Peace Warrant Was Taxed With the Cost. After hearing the evidence in case in which M. C. Styrone, white, asked for a peace warrant against his 18-year-old step-daughter, Miss Lulu Mayday, tried before Justice G. W. Bornemann, this morning, the magistrate decided that malice prompted the request for the warrant and taxed the petitioner with the cost, allowing the young woman to go unmolested. Public Defender Jones appeared in behalf of the defendant that went free.

IN JAIL FOR TRIAL. Probable Cause Found Against White Boy Charged With Larceny. O. F. Justice, small white boy, was tried before Justice G. W. Bornemann this morning on a charge of larceny and sent on to the Recorder's court where disposition of the case will be had. At present the boy is in jail awaiting trial. The understanding is that the watch the youngster is accused of taking from a lady at the beach yesterday has been returned to the owner by Mr. Tuck Savage, an employe of the Tidewater Power Company, and that although the youth may be guilty that no one has suffered as a result.

WOMAN GIVEN YEAR. Six Months for Resisting Officer and Six Months for Nuisance. Estelle Crawford, a colored damsel, suffered heavily in an affray. B. Granger was taxed with the costs for violating the speed law. A nol pros was taken in the case of Luther Moore, charged with assault with a deadly weapon. Jessie Starkey, a white woman, was tried for disorderly conduct, but the case was left open.

ATLANTIC COAST LINE RAILROAD COMPANY. Office of the Treasurer. Wilmington, N. C., June 30, 1917. The Board of Directors of Atlantic Coast Line Railroad Company has declared a dividend of three and one-half percent on the Common Capital Stock of that Company, payable at the office of the Treasurer, Wilmington, N. C., on Tuesday, July 10th, 1917, to such stockholders as shall be registered on the books of the Company on Tuesday, June 19th, 1917, at three o'clock P. M. JAMES F. POST, Treasurer.

STILL HOPES FOR FULL COTTON CROP. Absurd to Predict Crop Failure, Says Writer—Consumption May be Reduced. (Special to The Dispatch.) Greensboro, N. C., July 5.—The cotton firm of Thompson and Mulren has issued the following interesting letter on the cotton market outlook: "During the current cotton year we have issued five general market letters which have been so phenomenally correct in forecasting the unprecedented fluctuations of this unparalleled season that candor compels us to confess to great good luck, while still trusting that an unbiased and painstaking study of the situation may have been responsible, at least in part, for the accuracy of our prophecies.

ATLANTIC COAST LINE. The Standard Railroad of The South. Bulletin of Reduced Round Trip Fares From Wilmington, N. C. Subject to corrections and changes to conform to legally filed tariffs. The first dates shown are dates upon which tickets will be sold at these fares and upon which journey must begin. The "final limit" is last date, prior to midnight of which, Wilmington must be reached on the return trip.

SEABOARD AIR LINE RAILWAY. The Progressive Railway of the South. Bulletin of Special Round-Trip Rates from Wilmington, N. C. LAKE JUNALUSKA, N. C. \$12.60, WAYNESVILLE, N. C. \$12.00, NASHVILLE, TENN. \$20.30, RIDGECREST, N. C. \$9.95, VICKSBURG, MISS. \$36.55, CHATTANOOGA, TENN. \$18.30, BLACK MOUNTAIN, N. C. \$9.95, RIDGECREST, N. C. \$9.95, SEWANEE, TENN. \$20.70, VICKSBURG, MISS. \$36.55, LAKE JUNALUSKA, N. C. \$12.60, WAYNESVILLE, N. C. \$12.00.

WOMAN GIVEN YEAR. Six Months for Resisting Officer and Six Months for Nuisance. Estelle Crawford, a colored damsel, suffered heavily in an affray. B. Granger was taxed with the costs for violating the speed law. A nol pros was taken in the case of Luther Moore, charged with assault with a deadly weapon. Jessie Starkey, a white woman, was tried for disorderly conduct, but the case was left open.

ATLANTIC COAST LINE RAILROAD COMPANY. Office of the Treasurer. Wilmington, N. C., June 30, 1917. The Board of Directors of Atlantic Coast Line Railroad Company has declared a dividend of three and one-half percent on the Common Capital Stock of that Company, payable at the office of the Treasurer, Wilmington, N. C., on Tuesday, July 10th, 1917, to such stockholders as shall be registered on the books of the Company on Tuesday, June 19th, 1917, at three o'clock P. M. JAMES F. POST, Treasurer.

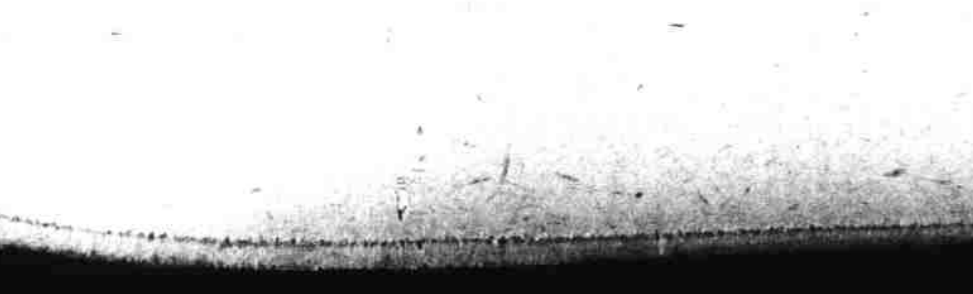
No waste by cows or in handling. Mr. J. L. Acree, Dothan, Ala., says that he would use Buckeye Hulls at the same price as old style hulls because Buckeye Hulls are easier to handle, cleaner, and because cows do not waste them as they do old style hulls. He believes that at least a third of the old style hulls are wasted by the cows and in handling. BUCKEYE HULLS. When wet, mix thoroughly and uniformly with the other forage that the cows can't nose them aside. Being sacked, they keep clean in the barn. Being compact, concentrated, solid roughage, it is easy to measure them out accurately and mix them properly with the other feed.

ATLANTIC COAST LINE. The Standard Railroad of The South. Bulletin of Reduced Round Trip Fares From Wilmington, N. C. Subject to corrections and changes to conform to legally filed tariffs. The first dates shown are dates upon which tickets will be sold at these fares and upon which journey must begin. The "final limit" is last date, prior to midnight of which, Wilmington must be reached on the return trip.

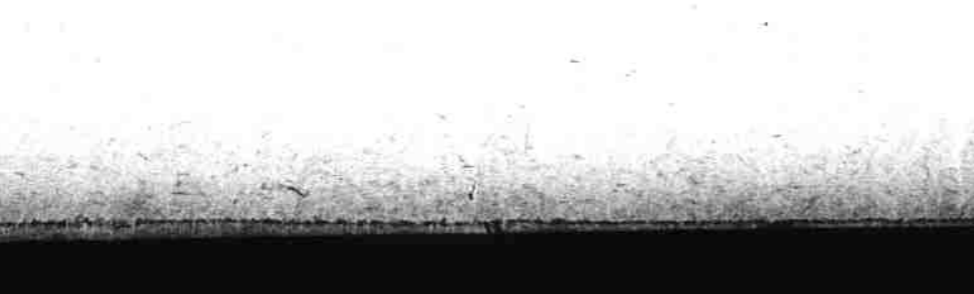
No Wonder Towser Bites. Don't let fleas torture your dog or your pets of any kind. For their comfort and your own peace of mind use BEE BRAND INSECT POWDER on the bugs. Just rub it into the fur and the bugs will die very quickly. Harmless to human beings and domestic animals. Bee Brand Insect Powder. Kills and mosquitoes die in a few minutes. Will kill ants, fleas, roaches, bed-bugs, lice, and bugs of every kind. Directions on package. Look for the Bee Brand Trade Mark. 25c & 50c Everywhere. McCORMICK & CO., Baltimore, Md.

Doctor, Nurse, Pharmacist. Do you select YOUR PHARMACIST with the same discrimination used in choosing your doctor and nurse? Getting the prescription FILLED RIGHT is no less vital than getting the right prescription. Your doctor, your nurse know us—OUR SCRUPULOUS ACCURACY, OUR EXPERIENCE, OUR REPUTATION. Jarman & Futrelle. PHONES: 211-212. 107 Princess Street.

BRINGING UP FATHER



BY McMANUS



BY McMANUS



BY McMANUS

