

## Aerial survey team

This group composed an Emergency Management aerial survey team to get up above the flood water for a better assessment of what was happening and what could be expected downstream. The giant Tennessee National Guard helicopter and crew used the facilities at Bertie Memorial Hospital to fly several trips in out. With the Guardsmen just after landing from the first surveillance of the entire area over several hours are Steve Guttu, regional coordinator with the NC Emergency Response Team in 15 eastern counties; Bertie Sheriff Greg Atkins; County Manager Jack Williford; Windsor Mayor Robert B. Spivey; Deputy/Assistant Manager and Emergency Management Coordinator Wendell Davis and J. W. Russell, Jr., photographer for the Bertie Ledger-Advance. (Photo by Laura Harrell)



## History

(Continued from Page 5)

Extension Director and said that loss for agriculture and poultry is cautiously estimated at \$9,554,286 and those numbers could "sky-rocket" if the area gets more rain.

Griffin by Tuesday had received no reports of livestock deaths and to his knowledge, that is not a problem in the county, but 50,000-100,000 chickens had been lost.

There is little hope for unharvested crops. Under ideal conditions, some peanuts may be harvested if farmers get ideal conditions, but most cotton is on the ground.

Help for the Department of Transportation and utility companies arrived as soon as possible.

Power was restored in whole sections at some places, but at others workers had to inspect service house-by-house before

electricity could be reconnected.

In Aulander, flooding was primarily in properties along the canal which bisects the town, including Aulander Rescue Squad building.

But other properties were flooded, such as Harrell's Grocery and Hoggard's Grocery.

The town was not cut off from the rest of the county, but travelers had to find alternate routes to get in and out.

School has been cancelled for the entire week for Bertie County students. Staff who could get to their regular worksites was asked to report to work Wednesday, Thursday and Friday.

Chicken on the Cashie was cancelled indefinitely. The event had already been delayed from September 15 until September 21 because of Hurri-

cane Dennis.

Annual Harvest Day at Historic Hope Plantation scheduled for Saturday, September 25, was cancelled.

Since almost all buildings in town were flooded, business owners looking for temporary quarters found few options.

Pritchett and Burch law firm has relocated to the former Carroll Gillam residence on South King Street.

Gillam and Gillam legal firm has relocated to the former Tim Prescott residence behind Bill Clough Ford.

The Chamber of Commerce is with the license bureau in Granville Hall on Granville Street.

Richard Cooper Insurance Agency will be working out of the old Walker Funeral Home on North King Street.

Name Brand Furniture at

# Robersonville Furniture Company

Use our terms, your Visa or MasterCard

**DINING ROOM SETS**

**BEDROOM SUITES**

**RECLINERS & ROCKER-RECLINERS by LA-Z-BOY**

**LIVING ROOM SUITES & ACCESSORIES**

**QUALITY BEDDING**

Discount Prices Everyday!

South Main Street, Robersonville, N. C.  
Telephone: 795-4765 • Guy, Magnolia & Glenn Forbes  
Store Hours: 9 am to 5:30 pm Monday thru Saturday  
OTHER TIMES BY APPOINTMENT!

# OUR HEADS MAY BE IN HERTFORD COUNTY, BUT OUR HEARTS ARE IN BERTIE COUNTY!

Beasley Enterprises, Inc., the parent company of Red Apple Markets, Eastern Fuels and Coastal Environmental Services, is based in Ahoskie. However, the Beasley's have close ties to Bertie County. Therefore, we are concerned about the flood victims in Windsor. *We were also victims!* Our Red Apple Store #49 on U.S. 13 Bypass was badly damaged and just recently re-opened. Our Eastern Fuels location on U.S. 17 was also flooded. So, we thank our employees and customers for their patience during the last 6 months. *Our hearts go out to you!*



People Serving Customers  
Quality and Convenience

Eastern Fuels Locations To Serve You ...

|          |          |          |              |          |             |          |
|----------|----------|----------|--------------|----------|-------------|----------|
| Ahoskie  | Belhaven | Edenton  | Murfreesboro | Plymouth | Williamston | Windsor  |
| 332-5021 | 943-3078 | 482-7401 | 398-3121     | 793-5016 | 792-2138    | 794-2351 |

Member of North Carolina Propane Gas Association, Inc. and National Propane Gas Association

## Aulander Family Physicians

Providing quality healthcare for you and your family for more than 40 years

We offer care for adults and seniors. And, we provide health services for business and industry throughout the Roanoke-Chowan area. Our comprehensive services include preventive and primary care, geriatrics and internal medicine.

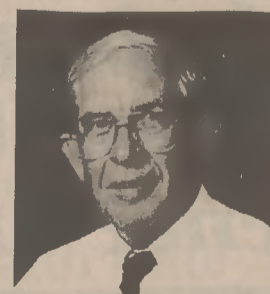
Office hours are 8 am to 5 pm, Monday-Thursday and 8 am to 4 pm on Friday, and physicians are on call 24 hours a day. We accept major insurance plans, Medicaid and Medicare.

We are now accepting new patients and can accommodate walk-ins. Please call our office to make an appointment.

108 Commerce Street Aulander 252.345.3791



Simon Khoury, MD



J. Fred Saunders, MD

www.rch.uhseast.com

ROANOKE-CHOWAN MEDICAL PRACTICES  
University Health Systems of Eastern Carolina

Roanoke-Chowan Medical Practices is part of University Health Systems of Eastern Carolina, which includes Pitt County Memorial Hospital, community hospitals, physician practices, home health and other independently operated health services. University Health Systems is affiliated with the Brody School of Medicine at East Carolina University.