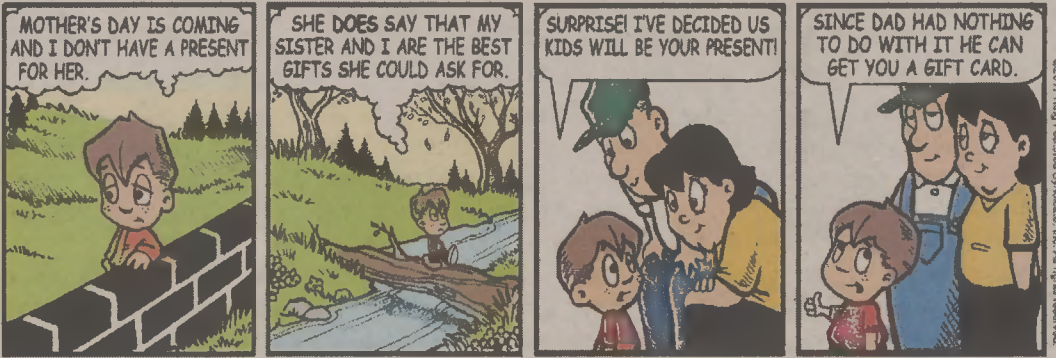


The fabric of Bertie County since 1832

Features

Amber Waves

by Dave T. Phipps



Out on a Limb

by Gary Kopervas



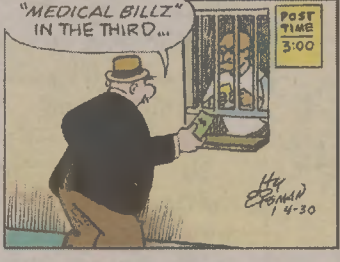
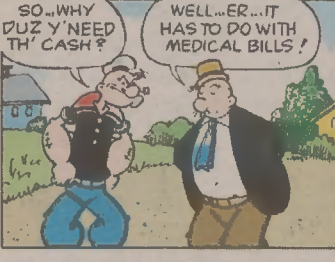
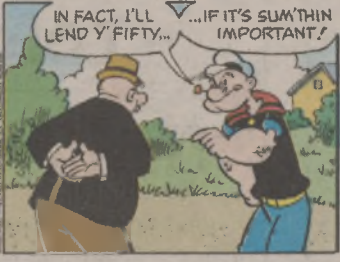
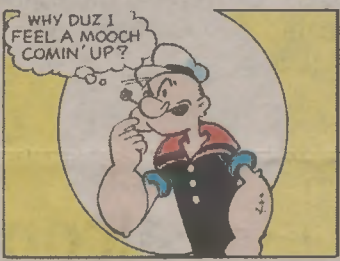
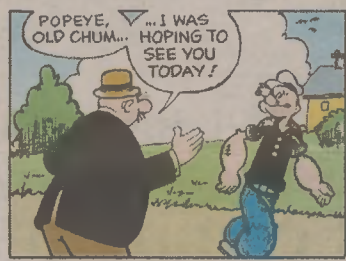
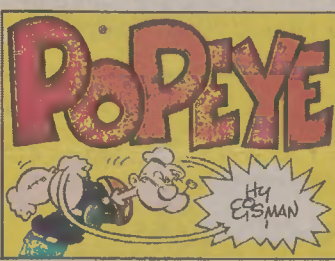
R.F.D.

by Mike Marland



The Spats

by Jeff Pickering



Just Like Cats & Dogs

by Dave T. Phipps



LAFF-A-DAY



King Crossword

ACROSS

- 1 Media watch-dog org.
- 4 Basin accessory
- 8 Jason's ship
- 12 Carte lead-in
- 13 Old woman's home?
- 14 Cat call
- 15 Capital of Uzbekistan
- 17 Elliptical
- 18 Involve
- 19 Plant bristle
- 21 Mischievous tyke
- 22 Capital of Rwanda
- 26 Prologue
- 29 Fast flier
- 30 Director Howard
- 31 Little lamb's owner
- 32 Prohibit
- 33 Ostentatious display
- 34 Santa — winds
- 35 Blunder
- 36 Point of view
- 37 Capital of Mozambique
- 39 Ostrich's cousin
- 40 Cal.'s ocean
- 41 Dutch exports
- 45 Shaving cream



- additive
- 6 A billion years
- 7 Gotten back
- 8 In the thick of
- 9 Accelerate quickly
- 10 — long way
- 11 Hooter
- 16 Hirsute
- 20 Humor
- 23 Met melody
- 24 Forsaken
- 25 "Meet Me — Louis"
- 26 Mosque big wig
- 27 "Peter Pan" pooch
- 28 Snare
- 29 Cookie holder
- 32 Rich fabric
- 33 "Be-Bop- —"
- 35 Greek vowel
- 36 With complacence
- 38 Knock over
- 39 Bygone anesthetic
- 42 Sacred
- 43 Egyptian bird
- 44 Charon's river
- 45 Big bother
- 46 Once around the track
- 47 Have bills
- 49 Seek damages

DOWN

- 1 Karma
- 2 Family
- 3 Group of actors
- 4 Inuit
- 5 Puppy

© 2017 King Features Synd., Inc.

Weekly SUDOKU

by Linda Thistle



Place a number in the empty boxes in such a way that each row across, each column down and each small 9-box square contains all of the numbers from one to nine.

DIFFICULTY THIS WEEK: ◆

- ◆ Moderate
- ◆◆ Challenging
- ◆◆◆ HOO BOY!

© 2017 King Features Synd., Inc.

Trivia test by Fifi Rodriguez

1. LITERATURE: What was the name of the city where Anne Frank and her family hid from Nazis in "The Diary of Anne Frank"?
2. MEASUREMENTS: How many feet are there in a fathom?
3. ADVERTISEMENTS: What product could no longer be advertised on U.S. TV after Jan. 1, 1971?
4. GEOLOGY: What is the tectonic boundary between the North American and Pacific plates?
5. MEDICAL: What do the initials stand for in the BRAT diet for children with upset stomachs?
6. TELEVISION: What was the detective character's main prop on the drama "Kojak"?
7. GENERAL KNOWLEDGE: How many siblings does a septuplet have?
8. FOOD & DRINK: What is "beurre noir"?
9. MOVIES: What movie's last line was, "We'll go on forever, Pa, 'cause we're the people"?
10. MUSIC: Who composed "Music for the Royal Fireworks"?

- © 2017 King Features Synd., Inc.
1. Amsterdam
 2. Six
 3. Cigarettes
 4. San Andreas fault
 5. Bananas, rice, applesauce and toast
 6. Lollipop
 7. Six siblings. Seven offspring are called septuplets.
 8. Butter that is cooked until it is dark brown
 9. "The Grapes of Wrath"
 10. George Frideric Handel

Trivia Test Answers



Solution time: 27 mins.

CryptoQuip

This is a simple substitution cipher in which each letter used stands for another. If you think that X equals O, it will equal O throughout the puzzle. Solution is accomplished by trial and error.

Clue: F equals S

- EDMK Q CQXTVS'F EVSJ XF
- KVSBQTP VKTP BMOXVYSM, X
- SMYJVK PVI YVITO FQP CDQC XC'F
- FME-FME.

© 2017 King Features Synd., Inc.
CryptoQuip puzzles \$3.50-24 Volumes • Order at: rbomail.com

DETECTOR

Today's Word

3. React; 4. Adorn

1. Delude; 2. Little;

solution

SCRAMBLERS

Answer

Weekly SUDOKU

Answer

When a tailor's work is normally only medicine, I reckon you could say that it's

SEW-5W

CryptoQuip

Answer

When a tailor's work is normally only medicine, I reckon you could say that it's

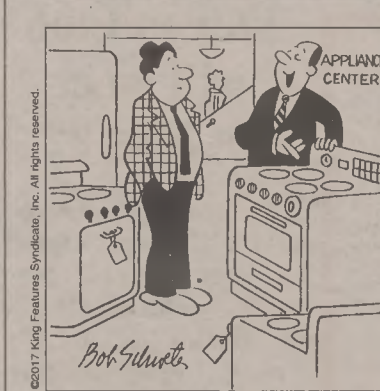
SEW-5W

SCRAMBLERS

Unscramble the letters within each rectangle to form four ordinary words. Then rearrange the boxed letters to form the mystery word, which will complete the gag!

- Beguile
- DUELED
- Small
- TILLET
- Respond
- ACERT
- Grace
- DROAN

TODAY'S WORD



"Here's just the stove for a bachelor like you — it comes with a smoke

!"