

Sports

The fabric of Bertie County since 1832

LA

From B1

Pungo, which rode the momentum of a five-set victory over Ridgecroft in the semifinals, improved to 14-4 overall with its first win over Lawrence Academy this season.

For the Warriors (16-5), who defeated Albemarle School in four sets in their semifinal match, an 11-match win streak came to an end.

PCA jumped out to an 8-4 lead in the first set and maintained the advantage throughout.

LA's Makayla Deaver served three straight points to pull the Warriors within two (12-10), but Edmondson's kill ended the No. 1 seed's momentum.

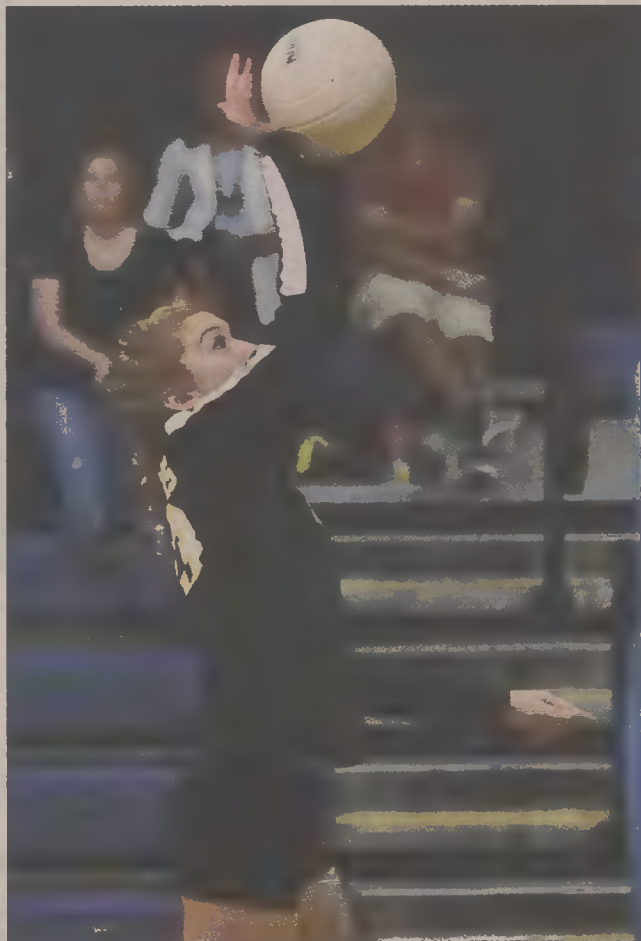
Two points from Lauren Smith cut the deficit to 15-13, but another Edmondson kill - this one angled around LA middle hitter/blocker Danielle Belch - made it 17-13.

The Raiders then extended their lead to 21-14 with four straight points, and a pair of aces from Edmondson gave the No. 2 seed the first set.

Two kills from Edmondson and one from Rebecca Hodges staked the Raiders to a 4-1 lead in the second set, and the Warriors could never get their bearings after that.

Four points from Ashley Spencer extended the lead to 13-4, and the closest Lawrence could get was 15-8 on a missed kill following Emma Allen's serve.

The Warriors managed just one point on their next three chances at the serving line, and Pungo pulled away behind Hodges (three points) and Alexis



Lawrence Academy senior volleyball players Danielle Belch (left) and Megan Davenport were selected as All-Tarheel Independent Conference players last week.

Carowan (four points). Edmondson had a pair of kills and a tap at the net at the end of the set.

The Raiders appeared on their way to an easy win in the final set when they grabbed an 6-2 lead.

Lawrence, however, showed grit and determination in battling back.

The Warriors used points from Gracen Rogers and Deaver to slice the deficit to two on three occasions, before Pungo started to pull away again behind three points each from Hodges and Katherine Williams in taking a 19-13 edge.

Bella Conigliaro's four points - which included her kill and one from Rogers - made it 20-16, and a missed kill by the Raiders sliced the deficit to three (20-17).

Rebekah Goodwin then collected two points at the line (one on a nice set by Lauren Smith that resulted in a kill by sister Lindsay) to pull the Warriors within a point, 20-19.

Pungo's Brandi Garrett ended Lawrence's momentum with a cross-court kill, and a long return put the Raiders three points from the championship.

A return from Deaver briefly staved off Pungo and Rogers added two points to cut the deficit to two, but a long return sealed the Raiders' sweep and the title.

Allen earned tournament most valuable player honors for Pungo, while Edmondson and Hodges were selected to the all-tournament team.

Davenport and Lindsay Smith were the all-tournament selections from Lawrence Academy.

Davenport and Belch earned All-TIC honors for the Warriors.

Hodges and Edmondson (TIC Player of the Year) were Pungo's all-league players. PCA's Melanie Sawyer was tabbed Coach of the Year.

Semifinals Lawrence 3, Albemarle 1

Lawrence Academy advanced to the TIC tournament finals with a four-set triumph over No. 4 seed Albemarle School on Wednesday, winning 25-16, 25-18, 17-25, 25-15.

The teams went back and forth in the first set until a three-point run by Bella Conigliaro gave the Warriors the lead for good, 8-6.

Rebekah Goodwin, Gracen Rogers, Lindsay

Smith, Danielle Belch and Megan Davenport all contributed in a flurry which saw the Warriors expand their advantage to 19-11.

Lindsay Smith's four points made it 23-12, and the Colts cut it to 24-14 before a long return gave the Warriors the set.

Belch's block on a three-point run by Conigliaro put LA ahead 6-3 in the second set, and Goodwin (two points) and Rogers (three) extended the lead to 13-6.

Albemarle never got any closer than four points the rest of the set, and that was at 22-18. A side-out, followed by the final two points from Rogers, put the Warriors up two sets to none.

Lawrence appeared headed for the sweep when it held a 17-15 lead.

But the Warriors had trouble with the serving of Samantha Nixon, who reeled off the final 10 points - which included four underhanded offerings, and the Colts pulled within one set.

But Albemarle - who handed Lawrence its only regular-season conference loss - was not able to eliminate the Warriors from the tournament.

Three points from Conigliaro, two from Goodwin and four from Lindsay Smith (Belch had a block and Conigliaro managed a kill) kept Lawrence out in front, 17-11.

Albemarle pulled within six points twice over the remainder of the set, but three points from Conigliaro extended the Warriors' lead, and a serve into the net gave the top seed the match.

PAINT IT PURPLE
ECU FOOTBALL vs. BYU
 SATURDAY, OCT. 21ST // 7 PM // HOMECOMING
 For tickets & team information: 800-DIAL-ECU | ECUpirates.com

 Thadd White Editor BLA	1. NE 2. Tarboro 3. SCHS 4. NCHS 5. CBA 6. Florida St. 7. Penn St. 8. ND	 Abby Parker Photographer BLA	1. NE 2. Tarboro 3. SCHS 4. NCHS 5. CBA 6. Louisville 7. Michigan 8. ND	 David Friedman Columnist BLA	1. NE 2. Tarboro 3. SCHS 4. NCHS 5. CBA 6. Florida St. 7. Penn St. 8. USC
 Jim Green Sports Editor BLA	1. NE 2. Tarboro 3. SCHS 4. Bedd. 5. CBA 6. Louisville 7. Penn St. 8. USC	 Travis Jackson Sports Writer BLA	1. NE 2. Tarboro 3. SCHS 4. NCHS 5. SWHS 6. Louisville 7. Penn St. 8. ND	 Leslie Beachboard Staff Writer BLA	1. NE 2. Tarboro 3. SCHS 4. NCHS 5. SWHS 6. Florida St. 7. Penn St. 8. ND
 Barry McGlone Retired AD Bertie High	1. Bertie 2. Tarboro 3. Jones Sr. 4. NCHS 5. SWHS 6. Florida St. 7. Penn St. 8. USC	 Willie Roberson Retired Coach Bertie High	1. NE 2. Tarboro 3. SCHS 4. NCHS 5. SWHS 6. Florida St. 7. Penn St. 8. USC	 Marshall Cherry Chief Op. Officer Roanoke Electric	1. Bertie 2. Tarboro 3. SCHS 4. NCHS 5. CBA 6. Louisville 7. Penn St. 8. USC
 Lewis Hoggard Ex.ec. Director W/B Chamber	1. NE 2. Tarboro 3. SCHS 4. NCHS 5. CBA 6. Louisville 7. Penn St. 8. USC	 Todd Lane Police Chief Windsor	1. NE 2. Tarboro 3. SCHS 4. NCHS 5. CBA 6. Louisville 7. Penn St. 8. ND	 Gene Motley Sports Editor RCNH	1. NE 2. Tarboro 3. SCHS 4. NCHS 5. CBA 6. Florida St. 7. Penn St. 8. ND

PIGSKIN PICK'EM

GAMES OF THE WEEK

1. Bertie at Northeastern
2. Tarboro at Riverside
3. Jones Senior at South Creek
4. Beddingfield at Nash Central
5. Southern Wayne at CB Aycokk
6. Louisville at Florida St.
7. Michigan at Penn St.
8. USC at Notre Dame

OUR "GUARANTEED" WINNERS

- | | | |
|------------------------|------------------------|--------------------------|
| Thadd - Penn St. (6-2) | Abby - NE (8-1) | David - Tarboro (6-3) |
| Jim - SCHS (5-4) | Travis - NE (7-2) | Leslie - SWHS (6-3) |
| Barry - Tarboro (8-1) | Willie - Tarboro (7-2) | Marshall - Tarboro (7-2) |
| Lewis - SCHS (7-2) | Todd - Tarboro (6-3) | Gene - NE (9-0) |

LAST WEEK'S RESULTS

1. David (6-2)
- Leslie (6-2)
- Barry (6-2)
4. Thadd (5-3)
- Gene (5-3)
6. Marshall (4-4)
- Todd (4-4)
8. Abby (3-5)
- Jim (3-5)
- Travis (3-5)
- Willie (3-5)
- Lewis (3-5)

2017 STANDINGS

1. David (53-18)
2. Travis (49-22)
- Marshall (49-22)
4. Thadd (48-23)
- Willie (48-23)
- Lewis (48-23)
7. Abby (46-25)
8. Leslie (45-26)
9. Todd (44-27)
- Gene (44-27)
11. Barry (42-29)
12. Jim (40-31)