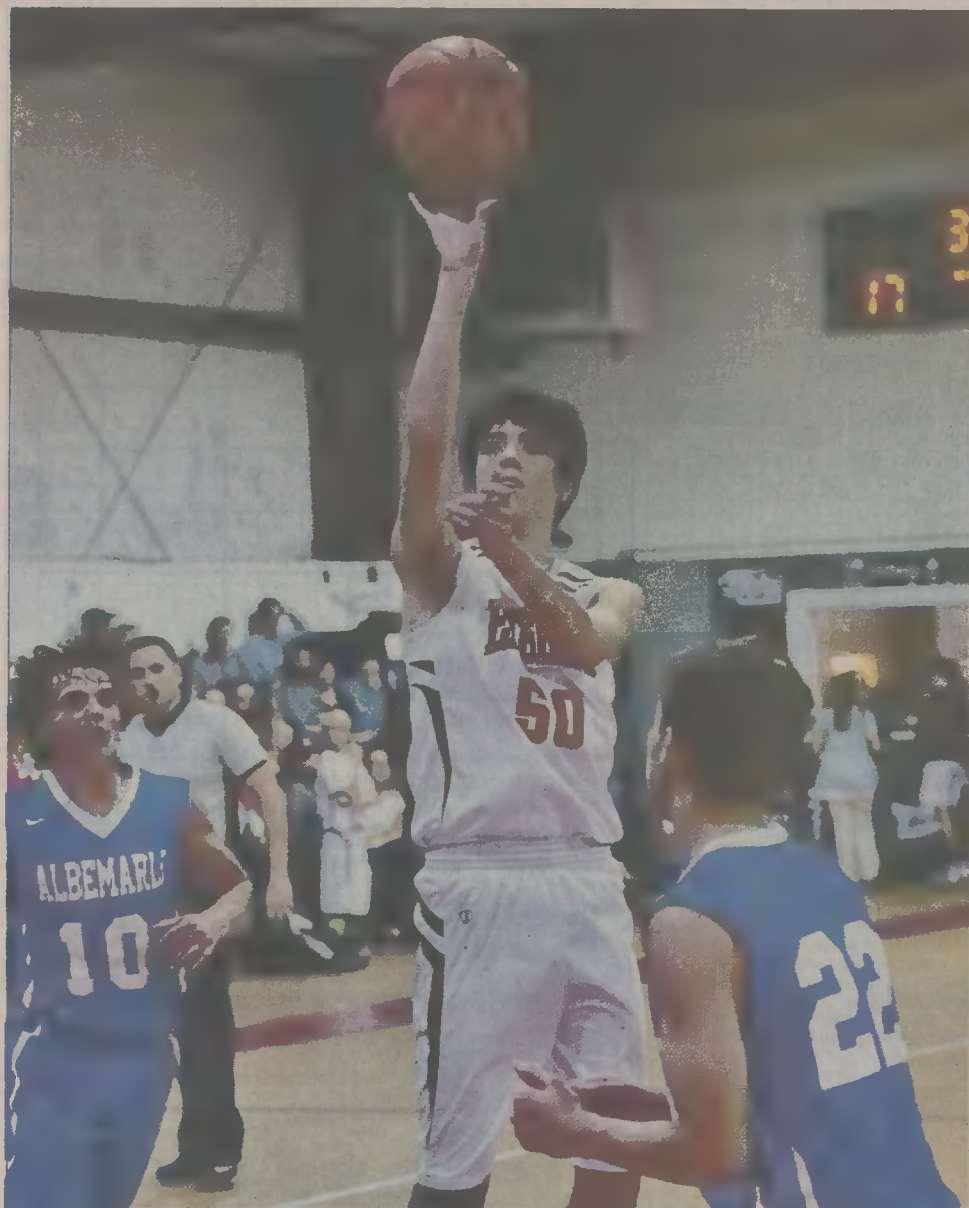


Sports

The fabric of Bertie County since 1832



JIM GREEN / Bertie Ledger-Advance

Bethel Assemblies Christian's Mason Dunlow (No. 50) shoots against Albemarle School.

## Bethel varsity boys win first two games

From Staff Reports

ASKEWVILLE - Bethel Assembly Christian Academy's varsity boys basketball team has won its first two games.

THE Eagles (2-0) overcame a slow start on Monday (Nov. 13) to defeat Albemarle School 68-49.

BACA trailed 12-11 after the first quarter but used a 12-7 edge in the second stanza to pull ahead, 23-19, at halftime. The Eagles then outscored the Colts 45-30 in the second half.

Bethel was led by Ma-

son Dunlow, who poured in 22 points, grabbed eight rebounds and blocked three shots.

The Eagles also got significant contributions from Lucas Doughtie (14 points, 13 rebounds), Caleb Simmons (11 points, eight rebounds, five assists, two blocks) and Josh Bunch (10 points, eight assists).

BACA opened its regular season on Thursday (Nov. 9) and cruised past Mount Calvary Christian Academy 70-27.

The Eagles used flur-

ries of 25-7 in the second quarter and 22-7 in the third quarter to earn the victory.

Simmons tallied 19 points for Bethel, while Dunlow and Brandon Ball added 13 points each.

Simmons and Ball (three 3-pointers each) combined for six of the Eagles' eight triples in the game.

Dunlow led Bethel with nine rebounds.

Bethel will continue its season in the Eighth Annual Eric Baggett Memorial Tournament this weekend.

## BACA varsity girls are off to 2-0 start

Lady Eagles overwhelm Albemarle

From Staff Reports

ASKEWVILLE - Bethel Assembly Christian School's varsity girls basketball team gave up the first two baskets to Albemarle School Monday night.

After that, it was all Eagles.

BACA outscored the Colts 33-10 over the final 14 minutes of the first half, and rolled to a 64-22 victory at home.

Bethel (2-0 overall) trailed 5-0 in the first 90 seconds after a basket and a three-pointer by Albemarle.

The Eagles then started hitting shots, forced turnovers with solid defense, and took advantage of the Colts' subsequent foul trouble.

Kayley Minton poured in 22 points for Bethel. She tallied 14 of those in the second quarter as the Eagles used a 22-7 run to take a 30-17 advantage.

Lauren Farless and Lindsey Todd each added 10 points for BACA, while Haley Northcott had eight, Maddie Knowles six and Sheree Harrell and Gracie Simmons chipped in four points each.

Albemarle managed just seven baskets in the final 22 minutes.

In their opener on Nov. 9, Bethel had no trouble with Mount Calvary Christian Academy, as it eased



JIM GREEN / Bertie Ledger-Advance

Lady Eagle Haley Northcott releases the shot in Monday's win.

to a 51-17 victory on the road.

The Eagles led 8-0 at the end of the first quarter, 21-11 at halftime and 32-13 after three quarters.

Minton poured in 29 points and grabbed nine rebounds for

Bethel, while Farless added six points and 10 rebounds and Northcott pulled down 12 rebounds.

Bethel continues play this weekend in the Eighth Annual Eric Baggett Memorial Tournament.

## Bethel JV teams a combined 3-1

From Staff Reports

Bethel Assembly Christian Academy's junior varsity basketball teams are a combined 3-1 after their first two games.

The Bethel JV boys improved to 2-0 on Monday with a 55-19 win over Albemarle School.

Joshua Morris led the Eagles with 17 points while Joey Patterson added 14.

On Thursday (Nov. 9), Bethel defeated Mount Calvary Christian Academy 52-23 behind 15 points from Morris, 14 from David Pesce, eight from Avery Jernigan and six from Austin Hughes.

The BACA JV girls emerged 1-1 after a 24-23 loss on Monday to Wanchese Academy.

The Eagles trailed 23-16 after three quarters and outscored Wanchese 7-1 in the final stanza, but they came up just short.

Bethel opened its season with a 30-7 triumph over Mount Calvary Christian Academy on Nov. 9.

Gracie Simmons and Madelyn Knowles led the Eagles with six points each, while Haven Hoggard and Sheree Harrell chipped in four points each and Abby Minton and Eliana Bazemore contributed three each.

Bethel's JV teams continue their seasons Thursday in the Eighth Annual Eric Baggett Memorial Tournament.

JV contests are scheduled for Thursday. See page 1B for the complete slate of games.

### BERTIE COUNTY LIMITED EDITION RIFLE

**Discounts up to \$200 OFF plus FREE Shipping!**

Easy layaway available!



Henry Model H004

Also on H001 & H009B  
Buy 1 or buy all 3!



Historic Bertie County North Carolina

© 2017 Historical Armory, Inc.

Historical Armory, Inc.  
Call toll free 1-877-484-0179  
[www.historicalarmory.com/bertie-nc](http://www.historicalarmory.com/bertie-nc)

Engraved on affordable, American-made, stock Henry rifles, the Bertie County Limited Edition Rifle combines meticulous research, original artwork, and finely detailed engraving to celebrate the history of Bertie County. Fantastic as a family heirloom and keepsake or community fundraiser. **Special offer expires November 26, 2017!**

# PIRATE FOOTBALL



## ECU vs. CINCINNATI



SATURDAY, NOV. 18<sup>TH</sup> // NOON

SENIOR DAY

For tickets & team information:  
800-DIAL-ECU | [ECUPirates.com](http://ECUPirates.com)

