

Macon County to Organize Farmers Federation

Million Dollars a Year Increase in Farm Income Seen as Possibility

The Plan For Macon County

That a Farmers Federation Warehouse be operated at Franklin. That a committee of at least seven farmer subscribers be elected by the Macon County Stockholders, one of whom shall be elected Chairman and President of the Macon County Farmers Federation committee. That this committee exercise general oversight over the business and determine the projects to be carried on, and that the control of the business shall be under the general management of the Farmers Federation, Inc., with regular audits of all books by the regular auditor of the Farmers Federation, Inc. That two farmer stockholders from Macon County be elected directors of the Farmers Federation, Inc.

Do Macon County Farmers Need To Organize?

First: The farmers' only hope is to organize. Second: The farmers will go down in relation to other classes in the community until they organize. The farmers' only chance to market produce in our complicated civilization is to organize, and market co-operatively. Third: Cattle in Macon County have decreased 28 per cent in the 10 years between 1920 and 1930, or from 8,982 in 1920, to 6,476 in 1930. Hogs have decreased 50 per cent, or from 8,582 in 1920 to 4,275 in 1930. Chickens raised have decreased about 10 per cent, or from 98,146 in 1919 to 88,345 in 1929. (Figures from the 1930 census.) The unorganized farmer is steadily going down all over the United States.

Why Macon County Needs The Farmers Federation

There are about 2,000 farms in Macon County. The future prosperity of Macon County depends largely on these farms. At present the farms of Macon County are not producing nearly as much as it is possible for them to produce because there are no organized markets for the production of these farms. If the gross income of Macon County farms can be increased an average of \$500.00 per farm, this will increase Macon County's gross income \$1,000,000 each year. This is a goal which is within the reach of the farmers and business men of Macon County. It will take the combined efforts of the farmers and business men of Macon County to attain this goal. It will be necessary to organize markets and to properly develop farm industries. This cannot be done in the twinkling of an eye; it will take time. But it will never be done unless we start, and the way to start is to organize a Farmers Federation for Macon County.

Has The Federation Been Able to Market the Farmers' Products?

The amount of money distributed by the Farmers Federation to farmers was small the first year, amounting to less than \$15,000. The production of the farmers was small and the Federation was inexperienced in marketing. As the

WHAT IS THE FARMERS FEDERATION, INC.?

The Farmers Federation is a co-operative farmers' organization, which is building up agriculture to the level of other organized business and trade. The membership is composed of Western North Carolina farmers, backed up by the business men of each county in which the Federation is operating. The business men have taken Preferred Stock in order to help build up and develop the markets which the Federation is working on. The Federation started business in November, 1920, in Buncombe County, with only one small warehouse and a railroad siding and has

slowly, but firmly, grown until it now operates thirteen warehouses in Buncombe, Henderson, Polk, Rutherford, Burke, Haywood and Jackson Counties, and in addition to these warehouses, it publishes The Farmers Federation News, a monthly agricultural paper which goes to all members and which is the only publication specializing in Western North Carolina farm problems; it operates egg and poultry markets, running trucks with surplus poultry and eggs to northern markets; it operates a dressing plant at Asheville; three hatcheries, one at Sylva, one at Asheville, and one at Spindale,

hatching and distributing purebred baby chicks; operates four sweet potato curing houses at Forest City, Tryon, Union Mills, and Morganton; operates a cannery at Hendersonville and has a forest products department handling wood and shrubbery; and has its own nursery. It also operates a feed mill at Fletcher, Morganton, Canton, Fairview, and Tryon, a cream route in Polk County, and has a Lord's Acre Department to help country churches in its territory. The Farmers Federation has in action the most complete program for the marketing of farm products of any organization in Western North Carolina.



James G. K. McClure, Jr.
President and General
Manager, Farmers
Federation, Inc.



This is the Marketing Department at Asheville, N. C., the clearing house for the many activities of the Farmers Federation

Federation has gained experience and widened its markets, this amount has increased. It now markets all kinds of farm produce for its members.

How Much Money Does The Federation Distribute Annually to Farmers?

For the past six years, the Farmers Federation has paid an average of \$364,231.69 per year to the farmers in its territory for things produced on the farm. This is a total for the past six years of \$2,186,589.12.

What Does The Federation Market for the Farmer?

Chickens, eggs, Irish potatoes, tomatoes, cabbage, sweet potatoes, corn, wheat, rye, vegetables, forest products, such as ties, pulpwood, acid wood, posts, logs, shrubbery, walnuts, and other farm products.

Is Experience Valuable In a Farmers' Organization?

Yes. Many farmers' organizations which start with high hopes soon go on the rocks of failure because the organization has had no experience and does not know the business.

Has The Farmers Federation Had Experience?

The Farmers Federation has toughed it out for fifteen years. It has cut its eye-teeth. It has

survived fires, drouth, bank failures, and depressed business conditions. It has learned how to run the farmers' business successfully. It has developed experienced and capable men in the marketing of poultry and eggs, in the marketing of vegetables, in the marketing of forest products, in the operation of the hatcheries and cannery and sweet potato curing houses, and in the selection of seeds and supplies. This experience is worth many thousands of dollars to the farmers.

The Unorganized Farmer Is Steadily Going Down All Over the Country

Farm production will only be increased as the farmer has a marketing organization which develops markets for him. The Farmers Federation has consistently done this wherever it is organized. "United we stick; divided we're stuck."

Where Are The Farmers Federation Warehouses?

Farmers Federation Warehouses are located at the following points: HENDERSONVILLE, N. C. FLETCHER, N. C. TRYON, N. C. SPINDALE, N. C. CRAGGY, N. C. NEWBRIDGE, N. C. CANTON, N. C. FAIRVIEW SIDING, N. C. WAYNESVILLE, N. C. ASHEVILLE, N. C. MORGANTON, N. C. FOREST CITY, N. C. SYLVA, N. C.

How Can a Farmers Federation Warehouse Be Started In Macon County?

By the farmers and business men of Macon County subscribing \$5,000 stock in the Farmers Federation, Incorporated. The stock is \$10.00 a share. The farmers subscribe for Common Stock; and the business men subscribe for Preferred Stock.

What Should Be the Goal of the Macon County Farmers Federation?

One million dollars more for Macon County each year is a goal that should be reached within the next ten years with the organization of the Farmers Federation and a steady and determined campaign on the part of the farmers and business men of Macon County to develop the farm marketing agencies which the Federation will make possible.

One Man, One Vote

The Farmers Federation is a co-operative farmers' organization. Each common stockholder has one vote and only one vote. No stockholder can have more than one vote and no small group and no individual can gain control. It is controlled and owned by farmers.

What Is the Difference Between Common and Preferred Stock?

The Preferred Stock is preferred as to the assets of the Farmers Federation. It is limited to a six per cent annual dividend, but this must be paid before a dividend can be paid on the Common Stock. The Preferred Stock is \$10.00 per share. It carries no voting privilege. The Preferred Stock is bought by people who want to co-operate in building up the marketing facilities of the County. The Common Stockholders own the Farmers Federation. The Common Stock can only be taken by farmers or producers. A share is \$10.00. Each Common Stockholder has one vote, and only one. The Common Stock is limited to 6 per cent dividend. But the Common Stock also has the privilege of sharing in a patronage dividend. That is, if any profits are made by the Federation in excess of 6 per cent on the stock, they can only be distributed as a patronage dividend, which means a percentage on the amount of business that the farmer does with the Federation. It is necessary for a farmers' co-operative organization to build up a strong surplus, but if any disbursements are made in addition to the 6 per cent stock dividend, they must be made on a patronage basis, in proportion to the business which each stockholder does with the Federation.

Board of Directors of The Farmers Federation, Inc.

BUNCOMBE COUNTY—James G. K. McClure, Fairview; B. A. Patton, Asheville.
BURKE COUNTY—C. G. Hicks, Rt. 4, Morganton; J. L. Houck, Rt. 2, Morganton.
HAYWOOD COUNTY — R. T. Boyd, Rt. 2, Waynesville; H. A. Osborne, Canton.
HENDERSON COUNTY — L. L. Burgin, Horse Shoe; Harry M. Roberts, Fletcher.
JACKSON COUNTY—Thomas A. Cox, Cullowhee; Carl Jamison, Glenville.
POLK COUNTY—J. T. Waldrop, Rt. 3, Mill Spring, C. M. Howes, Tryon.
RUTHERFORD COUNTY—O. J. Holler, Union Mills; R. Ledbetter, Uree.
DIRECTORS-AT-LARGE — S. C. Clapp, Swannanoa; H. A. Coggins, Bee Tree; Henry Francis, Rt. 2, Waynesville; F. E. Lykes, Arden; W. L. Brank, Weaverville; R. C. Crowell, Candler; Frank L. Fitzsimmons, Rt. 2, Hendersonville.

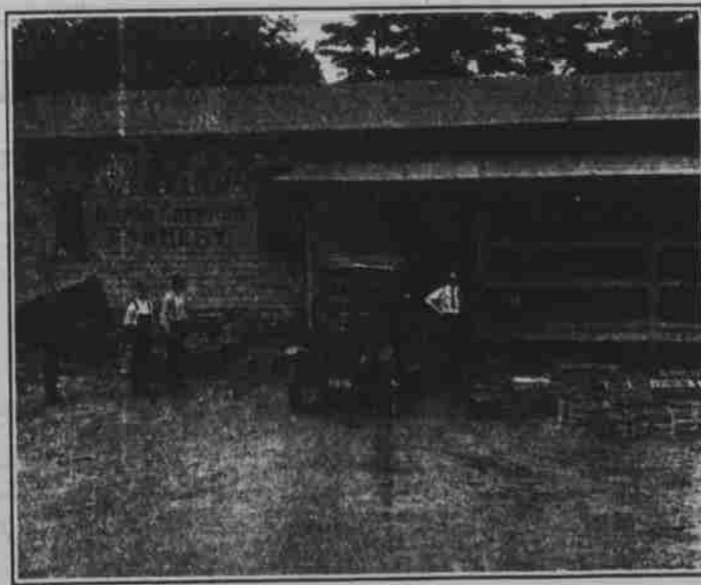
Organizing Committee for Macon County

Jake Addington, Frank Moody, John E. Rickman, Blackburn W. Johnson, E. V. Ammons, J. R. Franklin, J. C. Ferguson, B. W. Justice, W. A. Berry, Charley Henderson, Will Parrish, Charley McClure, Ed Mozely, Carl Slagle, Ed Battles, Sam Waters, L. L. Rowland, J. R. Wickle, Robert Parrish, Robert Ramsey, John Dean, Ed Byrd, A. L. McLean, J. R. Holbrooks, J. B. Matlock, Jonathan Morgan, Ray Penland, Robert Fulton.

These three pictures of some of the activities of The Federation illustrate the way in which The Federation is developing markets for the farmers in its territory



MARKETS FOR SWEET POTATOES
The sweet potato curing house puts this crop on a commercial basis. This fall we will operate four.



MARKETS FOR VEGETABLES
The Cannery creates a market for fruits and vegetables and gives employment to more than 50 girls and women



MARKETS FOR FOREST PRODUCTS
Half the land on the average farm is in woods. The Federation helps the farmer market his forest products