



The Franklin Press



and
The Highlands Maconian

PROGRESSIVE — LIBERAL — INDEPENDENT

VOL. L, NO. 48

FRANKLIN, N. C., THURSDAY, NOV. 28, 1935

\$1.50 PER YEAR

GOAL REACHED BY FEDERATION

426 Shares of Stock Sold; Organization Meeting Saturday

Farmers from all sections of Macon county are expected to gather in Franklin Saturday for the organization meeting of the Macon county branch of the Farmers Federation, Inc.

The principal business of the meeting, scheduled to start at 2 o'clock in the afternoon in the courthouse, will be to elect 10 directors for a local warehouse and store, which the federation plans to open Saturday, Dec. 14.

Goal Surpassed

Vance A. Browning of Bryson City, educational director of the federation, and R. Church Crowell, vice president, announced Tuesday that the goal of 400 shares of stock at \$10 each which had been set for this county, had been surpassed. They reported that 426 shares had been subscribed by 305 individuals, and they expressed the hope that by Saturday the number of shares sold would reach 500.

Many stock subscribers already have paid for their shares. Those who have not were notified by the federation this week to be prepared to do so at the meeting Saturday.

Officials Coming

A number of officials of the Farmers Federation are expected to attend the meeting and to make brief addresses, including, besides Mr. Browning and Mr. Crowell, James J. K. McClure, president of the organization; Guy M. Sales, secretary-treasurer and assistant general manager; and the Rev. Dumont Clark, leader of the federation's religious department, which sponsors the Lord's Acre movement.

Music will be furnished by a string band headed by Jim Corbin.

Macon Circuit To Hold Quarterly Conference

The first quarterly conference of the Macon circuit of the Methodist Episcopal church, South, will be held Saturday at Hickory Knoll church, according to an announcement by the pastor, the Rev. J. B. Tabor, Jr. The Rev. W. A. Rollins, of Waynesville, presiding elder of the district, will preach at 11 a. m. Saturday and Sunday. Dinner will be served all attending the service and conference Saturday. The conference is to be held immediately after dinner.

Rev. Mr. Tabor will preach Sunday at Mulberry church at 2 p. m. and at Asbury church at 3:45 p. m.

A doctor's cheerful talk cures 75 per cent of what you've got and his prescription the rest.

The land occupied by the public roads of the United States is equal to the area of the whole state of Indiana.

Be wise . . .



SHOP EARLY

Only 22
Shopping Days
till
Christmas

4 Hurt

When Automobile Over- turns on Main Street

Four persons suffered minor injuries when an automobile driven by John Cunningham, of Franklin, overturned late Friday night at the foot of the town hill on East Main street.

Mr. Cunningham, it was reported, swung his car partly off the highway when another automobile, with only one headlight burning, approached from the opposite direction. When he attempted to turn his car back onto the concrete paving it turned over.

Mr. Cunningham was taken from the wrecked car unconscious and was carried to Angel hospital. At first it was feared he had suffered internal injuries, but X-ray pictures revealed that he was not seriously hurt and he was dismissed from the hospital the following day.

Miss Marjorie Witherspoon, of Franklin, sustained a cut above her right eye; Ed Matthews, of Franklin, also was slightly cut on the face, and Miss Marjorie Farmer, of Clayton, suffered an injured knee.

The accident occurred while the group was taking a ride during the intermission of a local subscription dance.

BETTER POSTAL SERVICE SEEN

Bids Asked on New Route Between Cornelia, Franklin

Improved postal service for Franklin, with more prompt handling of a large part of both incoming and outgoing mail, is indicated in a notice posted by postal authorities this week inviting bids on a new mail route between Cornelia and Franklin and intermediate points.

Bids on the new route, calling for motor carrier service, will be received by the postoffice department until January 14, 1936, and the contract, when awarded, will be for a four-year period starting July 1, 1936.

The route is 60.4 miles long and the proposed new service is daily, except Sunday.

The carrier will be required to leave Cornelia at 6:45 a. m., arriving at Franklin at 10 a. m., and to leave Franklin at 10:15 a. m., arriving at Cornelia at 1:30 p. m.

Mail from Cornelia, embracing a large share of that which is handled by the local postoffice, is now carried by the Tallulah Falls railway, arriving here at 2 p. m. The new service will not replace the present service, it was stated by Postmaster T. W. Porter, but will be in addition to it.

Mr. Porter said he applied for the new route only after he had been assured by postal authorities that it in no way would supplant the present service by the railroad.

Presiding Elder To Preach Here Sunday

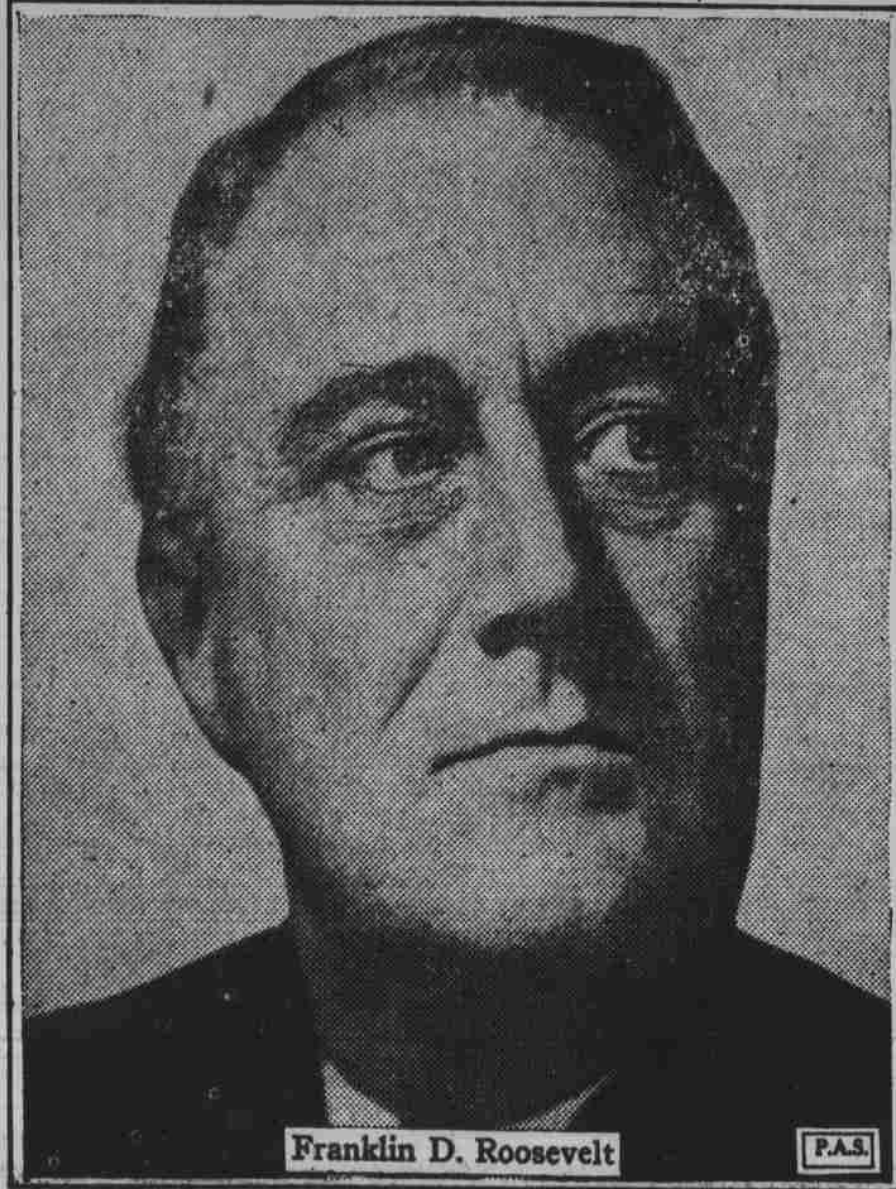
The Rev. W. A. Rollins, presiding elder of the Waynesville district, Methodist Episcopal church, South, will preach at the Franklin Methodist church at 7:30 o'clock Sunday night, according to an announcement by the pastor, the Rev. C. C. Herbert, Jr. At the close of the service the first quarterly conference will be held.

W. L. Higdon Granted Divorce Decree

W. L. Higdon was granted a divorce decree from Mrs. Mary Siler Higdon, who contested the action, in Macon county superior court last Thursday afternoon. Two years separation was the ground upon which the decree was granted.

Roosevelt, Borah Favored As Major Party Candidates

Democratic "Next President" Poll Choice



Franklin D. Roosevelt

F.A.S.

Final State by State Vote in 'Next President' Poll

(STATE)	DEMOCRATIC		REPUB- LICAN	3d PARTY
	For Roosevelt	For Other Democrats	All Rep. Choices	All 3d Party Choices
ALABAMA	3324	230	1156	30
ARKANSAS	2976	120	707	450
CALIFORNIA	3009	307	3902	1011
COLORADO	2075	233	1895	259
CONNECTICUT	945	56	1460	137
FLORIDA	3542	788	1598	289
GEORGIA	1097	945	1058	39
IDAHO	646	—	823	—
ILLINOIS	4536	276	3427	201
INDIANA	2802	84	1515	74
IOWA	3697	143	4923	188
KANSAS	1510	113	3333	57
KENTUCKY	4358	107	2126	67
LOUISIANA	1889	153	388	76
MAINE	673	69	1434	72
MARYLAND	796	481	1317	—
MASSACHUSETTS	3179	211	2676	150
MICHIGAN	5508	222	3683	264
MINNESOTA	3178	294	5929	634
MISSISSIPPI	1403	140	637	—
MISSOURI	8564	611	7201	209
MONTANA	382	19	288	20
NEBRASKA	2569	195	3346	15
NEW HAMPSHIRE	1057	—	1662	89
NEW JERSEY	2252	164	3427	176
NEW MEXICO	821	—	1027	—
NEW YORK	1505	129	5160	133
NORTH CAROLINA	8907	426	2228	63
NORTH DAKOTA	2201	117	2408	640
OHIO	1648	256	2322	66
OKLAHOMA	5987	347	3196	367
OREGON	419	32	585	81
PENNSYLVANIA	2270	117	4011	45
RHODE ISLAND	577	—	769	—
SOUTH CAROLINA	922	243	378	97
SOUTH DAKOTA	1294	17	2043	237
TENNESSEE	1301	86	1053	69
TEXAS	8544	1128	3609	361
UTAH	602	—	653	—
VERMONT	307	96	622	9
VIRGINIA	6851	1656	4993	612
WASHINGTON	3915	74	4321	556
WEST VIRGINIA	2431	113	1774	31
WISCONSIN	1861	155	2957	180
WYOMING	1057	5	831	32
	119,387	10,958	104,851	8,086

'F. D.' Leads in Popular Vote Cast in Nation- wide Poll

BY JOHN THOMAS WILSON
(Special to The Press-Maconian)

NEW YORK, Nov. 27.—More than a quarter of a million voters in small towns and rural America have spoken. They have registered their choice of candidates for the 1936 Presidential election in a nation-wide poll.

The majorities of these voters want President Roosevelt as candidate on the Democratic ticket and Senator Borah of Idaho as banner bearer on the Republican ticket.

Exactly 243,282 ballots were cast in this nation-wide "Next President" poll. The poll was conducted by newspapers located in small towns throughout the country, of which The Press-Maconian was one. The poll was started in late September and brought to a close on November 18th, at the end of the eight weeks of balloting.

The state by state tabulation of the national vote was compiled by Publishers Autocaster News Service of New York, a newspaper service company that serves the thousands of newspapers which cooperated in conducting the poll.

Elsewhere in these columns are printed the state by state tabulations of the votes; the breakdown of the vote as to choices of candidates; percentage comparisons of this poll vote with the presidential election in 1932; and the distribution of the electoral votes in the various states as based upon actual popular vote majorities at the conclusion of this poll.

Results of the Poll

In summary presentation, here are the results of the poll:

Roosevelt leads in popular vote 119,387 to 104,851 for all Republican choices.

Republican choices lead in twenty-three states to twenty-two states for Roosevelt.

In electoral votes the poll ends in a tie, with Republicans 261 to 261 for Roosevelt. Nine electoral votes remain unplaced. They are: Arizona 3, Delaware 3 and Nevada 3. No vote was recorded from those three states.

The tie in electoral vote was established during the closing hours of the poll. The vote from readers of the Havre (Montana) Independent gave that state and the popular vote lead there to Roosevelt. Up until these ballots were received the Republicans were leading in electoral votes 261 to 257 for Roosevelt. Montana's 4 electoral votes were deadlocked in a tie.

Suburban Opinion

In interpreting this poll, the politically-minded reader should keep in mind that this vote represents only small town and rural opinion. No urban votes are represented.

Judged solely from that standpoint, political observers would no doubt sum up the findings at this time as follows:

1. That Roosevelt's extreme popularity has declined. (From 59% in 1932 to 53% at this time.)

2. That Roosevelt is still the popular choice, taking the country as a whole. (His popular vote of 119,387 to 104,851 for all Republican choices.)

3. That Roosevelt's margin of popularity has declined to a point where a "close battle" is indicated next year, so close that no one can now accurately predict the result. (In other words the tie in electoral votes, 261 to 261.)

4. That further proof a "close battle" impends in 1936 is the fact that even if Roosevelt obtained all of the "other Democratic choices" votes and all Third Party votes in

(Continued on Page Seven)