

HORN'S SHOE SHOP SAYS WE ARE STILL MENDING SHOES

It's not the little feeble task, Of doing what you say, The only thing we truly ask, "Is just to try us now—today."

HORN'S SHOE SHOP
Box 212 Troy F. Horn
Opposite Courthouse

TO RELIEVE NEURITIS PAINS FAST



15c FOR 12 FULL DOZEN FOR 25c

Demand and Get Genuine BAYER ASPIRIN

Sufferers of STOMACH ULCERS due to HYPERACIDITY

DEFINITE RELIEF OR MONEY BACK

THE WILLARD TREATMENT has brought prompt, definite relief in thousands of cases of Stomach and Duodenal Ulcers, due to Hyperacidity, and other forms of Stomach Distress due to Excess Acid. SOLD ON 15 DAYS TRIAL. For complete information, read "Willard's Message of Relief." Ask for it—free—at

PERRY'S DRUG STORE

HELP KIDNEYS

To Get Rid of Acid and Poisonous Waste

Your kidneys help to keep you well by constantly filtering waste matter from the blood. If your kidneys get functionally disordered and fail to remove excess impurities, there may be poisoning of the whole system and body-wide distress. Burning, scanty or too frequent urination may be a warning of some kidney or bladder disturbance.

You may suffer nagging backache, persistent headache, attacks of dizziness, getting up nights, swelling, puffiness under the eyes—feet weak, nervous; all played out.

In such cases it is better to rely on a medicine that has won country-wide acclaim than on something less favorably known. Use Doan's Pills. A multitude of grateful people recommend Doan's. Ask your neighbor!

DOAN'S PILLS

YOU'LL AGREE



*ALCOHOL 20-21% by Volume

THESE ARE BETTER WINES

NEW YORK STATE

Widmer's HILLSIDE Wines

Widmer's Wine Cellars, Inc., Naples, N.Y.

A CLUE!

The sure clue to good shaves is a Star Single-edge Blade. Made since 1880 by the inventors of the original safety razor. Keen, long-lasting, uniform.



STAR BLADES

FOR GEM AND EVER-READY RAZORS

COURT ISSUE SPLITS PARTY

New Alignment Probable Of Political Leaders In Next Campaign

(Special to The Press-Maconian) WASHINGTON, March 25.—Politics is always in the air in Washington, where political considerations determine most of the activities of Government, year in and year out. But after a Presidential election there is usually a breathing spell of a couple of years in party politics, before the forces of the opposing parties begin to form their lines for the next Presidential contest.

The partisan breathing spell has been very brief this time, however. Mr. Roosevelt's second term is hardly two months old, but already the lines are forming for the election of 1940, with the possibility that the line-up in that year may be totally different from anything in the past.

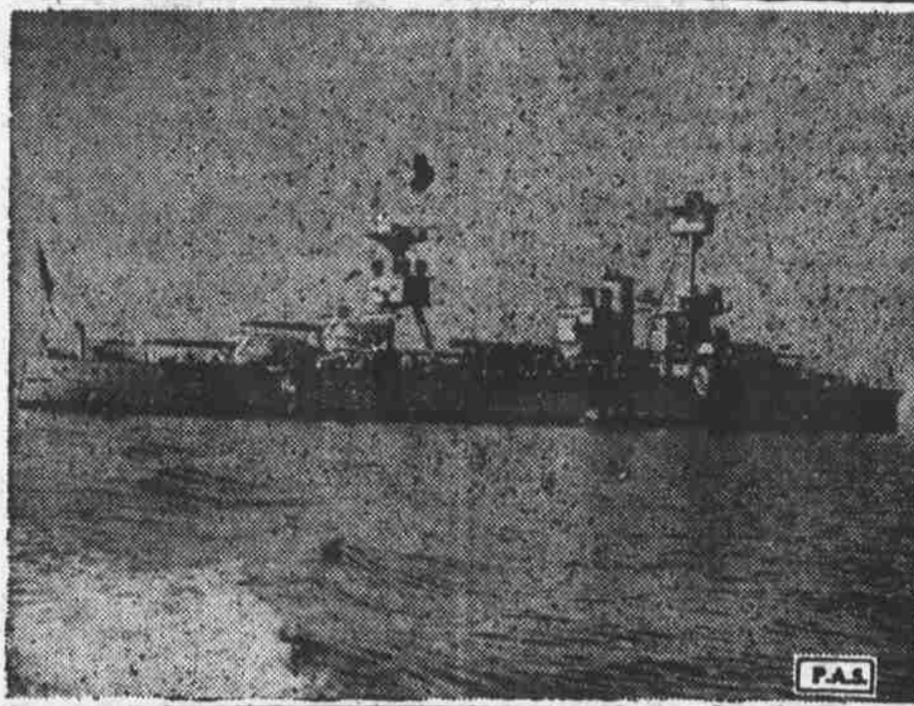
Two developments since the first of the year have started shifts of political opinion and point toward a realignment of political leaders. These are the President's proposal to bring the Judicial department of the Federal Government under the control of the Legislative and Executive departments, and the spectacular rise to power and prominence of John L. Lewis and his CIO or industrial union program for labor organization.

The President's proposal has had the immediate effect of splitting the Democratic party wide open. "Old line" Democratic leaders, who have been willing to go along with Mr. Roosevelt in the name of party regularity, even though many of his New Deal policies ran contrary to their own judgments and to the party's traditions, are coming out in the open and declaring that they cannot follow him on any proposal designed to impair the position of the Supreme Court as an equal and coordinate branch of the Federal Government. The Senate split is not along established party lines.

Although the 16 Republican senators are naturally opposed to the President's plan, they are keeping quiet and letting the Democrats do the public protesting. The most active public leader of the opposition is Senator Wheeler of Montana, a Democratic wheelhorse whose party regularity has never been questioned. Following Senator Wheeler's leadership are at least 25 senators of his own party, mostly from the traditional Democratic stronghold of the "Solid South."

They are earnestly, even bitterly determined to fight the Supreme Court proposal to the last ditch. At present more than 40 Senators are avowedly in opposition to the Court plan. That is not a majority of the Senate, but it is a large

Battleship New York Sails for Coronation



WASHINGTON . . . The Battleship New York will participate in an international naval review at Spithead on May 18 in connection with the coronation of King George VI. The New York was Admiral Rodman's flagship when he commanded the Sixth Battle Squadron during the World War.

enough group to block the Court proposal, or at least to force a compromise, even if ten or a dozen yield under Administration pressure. And since this "bloc" contains many of the most powerful party leaders, with enormous influence in their home states, who are risking their political futures as a matter of principle, observers here regard the situation as pointing directly toward a split in the whole Democratic party between "Old Line" Democrats and "New Leaders."

That might result in some sort of a coalition of conservative and anti-New Deal forces for the 1940 campaign. The proposal has been made and is seriously being considered in Republican circles that it would be good strategy for the Republicans to let it be known that their party will put no candidates in the field in the Congressional elections of 1938 against Democratic Senators and Representatives who vote against the Administration on the Supreme Court issue.

Labor Party for 1940

Further complicating the political outlook is the apparent certainty that there will be a new and powerful Labor Party in the field in 1940, with possibly 10 to 15 million votes which it will control. It will be a Third Party, but it may endorse the Administration's candidates, as its nucleus, as Mr. Lewis' American Labor Party did in the 1936 elections. John Lewis stands out today as the strongest labor leader since the late Samuel Gompers. The breach between his industrial union organization and the craft union set-up of the American Federation of Labor grows wider every day. The outlook from here is for practically complete domination of the labor situation by Mr. Lewis, in the long run, although until that is demonstrated the Ad-

ministration will not openly take sides against William Green and his Federation. The Federation is not, however, an aggressive political unit, while the Lewis CIO is. Therefore, great consideration may be expected to be shown toward the CIO and its activities, and political plans looking to 1940 will be shaped with him and his followers in mind.

It is not generally believed here that Mr. Lewis is personally ambitious for the Presidency, but it is held certain that he will have a great deal of influence in determining the President's selection of the man he wants as a candidate to succeed himself. Mr. Roosevelt, in recent speeches and press state-

ments, has more than once referred to the next inauguration of a President, in terms which indicate that he is already thinking about his successor.

New "Blue Eagle"

The idea that the Supreme Court issue can be permanently settled only by the submission to the states of a proposal for a Constitutional amendment seems to be gaining ground, in spite of the President's insistence that that process takes too long. Most of the demand for immediate action arises from the belief in Administration circles that a new "Blue Eagle" is necessary, to avert the imminent danger of an inflationary boom which might end in a worse depression than the last one. It is an open secret that the rising spiral of commodity prices, which are going up faster than the purchasing power of consumers is rising, is giving Government economists serious concern.

Smaller Poultry Hatchings Forecast

Increasing evidence that poultry hatchings will be smaller this year than last was reported today by the Bureau of Agricultural Economics in its current summary of the poultry and egg situation.

The principal factor was said to be the high price of feed in relation to prices received by farmers for their eggs.

Farm prices of eggs this spring— Influenced in part by the Agricultural Adjustment Administration egg-buying program—are expected to average no lower than in the spring of 1936.

A less than average seasonal decline in prices of poultry after May was forecast on the basis of the prospective decrease in poultry production and marketings.

For Reliable Field and Garden Seeds (The Best Money Can Buy)

Go to The FARMERS FEDERATION WAREHOUSE

Palmer Street

Franklin, N. C.

MOTHER! PROTECT your BABY

Mother, most hospitals now SAFER against germs. So, protect their babies against mother, do as hospitals do, as germs and skin-infection by doctors recommend. Give rubbing Mennen Antiseptic your baby a safety-rub with Oil all over the baby's body— Mennen Antiseptic Oil daily, every day. This keeps the Buy a bottle of the oil at your baby's skin healthier and druggist's today.

MENNEN Antiseptic OIL

SEE IT TODAY! THE SENSATIONAL NEW Kitchen-proved REFRIGERATOR

BETTER FOOD PROTECTION
Milk, meat, leftovers kept safely days beyond any average requirement.

GREATER CONVENIENCE
Conclusive savings with Triple Food Saver, Triple Storage, Adjusto-shelf.

FULL POWER
Efficient Economiser Unit averages less than 15 minutes per hour running time!

FASTER FREEZING
70 minutes or less for ice—under kitchen conditions with full food load.

GREATER ECONOMY
Daily operating cost only little more than postage stamp.

623 scientific tests . . . in 89 Home Proving Kitchens the world over . . . confirm its amazing laboratory records!

Below—Built-in Food Safety Indicator; always in view with proof of Safety Zone coldness.



Above—New Full-powered Economiser Unit; rock-bottom operating economy . . . sealed in steel . . . 5-Year Warranty.

Circle—Big Sanalloy Froster for faster freezing . . . up to 50% more ice in 24 hours! Only in Westinghouse.

Go over the Westinghouse Kitchen Proof results for yourself. See how each refrigerator feature contributes to new usability and economy. More than ever, "It's 10-Year Economy that counts!"



Westinghouse Kitchen-proved REFRIGERATOR

\$5.00 WILL PUT A WESTINGHOUSE IN YOUR HOUSE

Bryant Furniture Company FRANKLIN, N. C.