

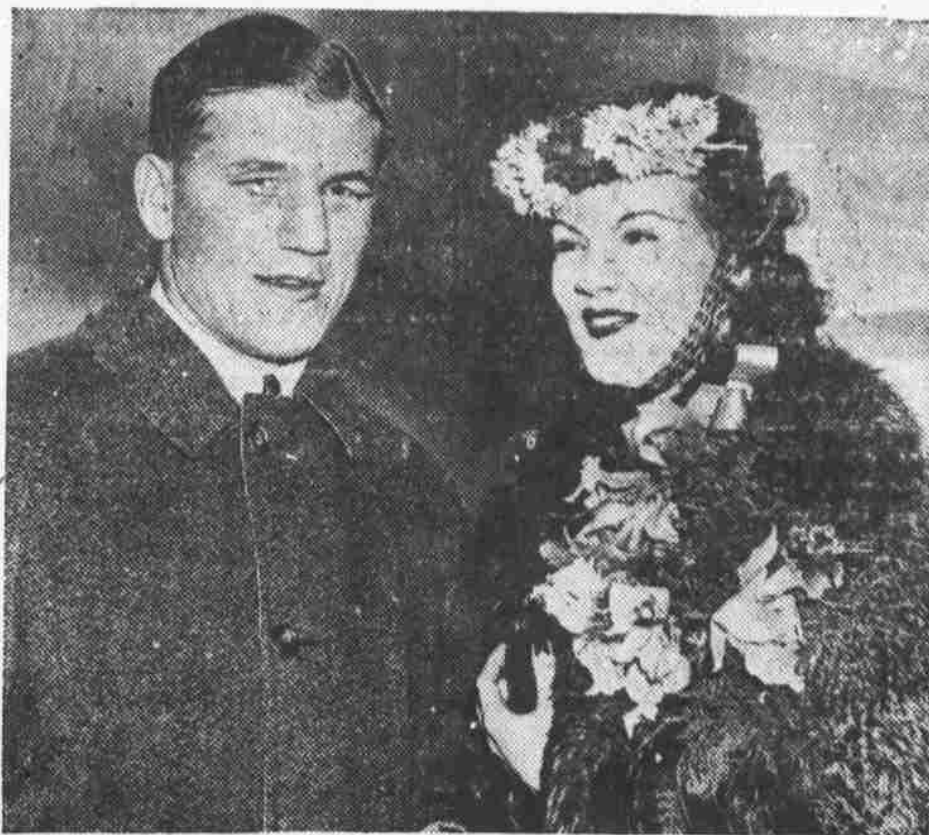
MANY FIRES IN 10-YEAR PERIOD

During the past 10 years on the Nantahala national forest, according to Paul H. Gerrard, forest supervisor, the forest service has fought approximately 400 fires, and all were caused by man except 11 lightning fires. An analysis of the man-caused fires reveals that 41 percent of the fires were caused by incendiaries who started the forest fires purposely through any one of the many erroneous ideas. Some believed that forest fires "green-up" the woods for grazing, not realizing that inferior grasses and weeds replace better grasses when fires occur. Many burn the woods to kill insects, snakes, and other forms of wild life, while these forms of wild life usually escape the fire and the larger game animals are killed. Numerous reasons are propounded for woods burning, but science has failed to discover beneficial results for widespread burning of forest lands.

Brush burners caused 19 per cent of all fires on the Nantahala national forest during the past 10 years. These fires, although unintentional, have caused quite a problem and are caused by the lack of judgment on the part of farmers who have brush piles to burn. Often it is too late when they discover that the weather is too dry and windy to burn brush and the forest fire has already spread into the woods. Brush burning should be done in late afternoon on a damp day.

Smokers, with the toss of a lighted cigarette or match into the

Farr Is Kayoed by Cupid



Tommy Farr, heavyweight champion of the British isles who hasn't fared so well against American heavyweights, has lost another decision, this time to Cupid, and is shown here with his intended wife, Eileen Wenzel, as they boarded a plane for California to investigate the possibilities of a movie career.

brush or grass at the side of the trail have caused 13 per cent of the fires on the forest. It is not often that the same individual would be so careless as to throw a cigarette on his rug at home, but little does he realize that the forest floor becomes much more inflammable than his parlor and the death and destruction that follows a large forest fire is much greater than would be the loss of his own home.

Many campers are also careless

and have started 12 per cent of the forest fires. When their picnic or camping is over, their only thought is to take their tired bodies home. The fire they left would have been so easy to have put out, but their minds were occupied with getting their belongings into the car.

Lumbering industries caused 8 per cent of the fires and railroads 3 per cent, while fires due to miscellaneous causes amounted to 4 per cent.

During the past 10 years each fire has burned an average of 55 acres of federal and private land, a total of over 21,000 acres.

The picture of the past has been dark but the forest service has not been waging a losing fight. Forest fires are on the decrease and it is fast becoming uncommon to see an uncontrollable fire raging through the forests.

At the present time, the Nantahala national forest, as well as other forests in the United States, is conducting a study to reduce fires to a minimum. During the past year all of the residents living near national forest land have been contacted and their aid requested in lowering the number of fires caused by burning brush. These residents have unanimously agreed to cooperate by notifying forest rangers or state wardens when and where they would burn brush and to be most careful in this practice. This contact work is already showing results. Heretofore, 20 per cent of the forest fires have resulted from this cause, while so far in 1938, only one fire has resulted from this cause, and when the forest ranger arrived at the fire, the man responsible had nearly extinguished it.

Through the press, the radio, and personal contacts, the public has learned that fire is as destructive in the woods as in the city when it gets on the rampage and thoughtful citizens are fast becoming fire conscious in the woods.

In 1936 the Nantahala national forest had 116 fires in which nearly 4,000 acres of Federal and private forests were burned while in 1937 only 23 fires were experienced with a loss of 273 acres out of 300,000 acres protected. All indications point to the loss of even less acreage during the present year if the fine cooperation of tourists and local people continues.

The fight is not over but the foe is retreating and with the public joining the federal and state organization in the fight, the forest fire will soon become a nightmare of the past.

SOCIAL AGENCY COUNCIL FORMED

(Continued from Page One)

projects; Ethel Hurst, supervisor WPA lunch rooms; Mrs. Leona P. Duncan, supervisor adult education; Mrs. Margaret Ordway, supervisor national youth administration; J. R. Faison, supervisor farm security administration; Mrs. Hayes B. Overcash, county home agent farm security administration; John Wasilik, Jr., commander American Legion, A. R. Higdon, adjutant American Legion; J. E. Perry, president Franklin Rotary

Club; Wilton H. Cobb, president Highlands Lions club; Mrs. John Wasilik, Jr., president Franklin Parent-Teacher Association; Mrs. W. H. Sellers, chairman social service, Episcopal church; Mrs. W. J. Zachary, chairman social service, Methodist church; Mrs. H. T. Horsley, representative social service, Baptist church; Mrs. Ted

Gribble, chairman social service, Presbyterian church; Mrs. J. W. Cantey Johnson, representative of The Franklin Press.

J. E. Perry, F. H. Potts and C. S. Slagle, of the Macon county welfare board, were present and 17 other persons, including visitors from the welfare departments of Jackson and Graham counties.

PAY-AND-TAKE-IT

"HOME OF GOOD COFFEE"

Just Off the Square on Iotla Street

SUGAR, 10 lbs. 49c

PURE COFFEE, lb. 10c

SODA, 6 boxes 25c

COCOA, 2 lb can 15c

PEANUTS, 2 lbs. 19c

RINSO, large box 25c

LIBBY'S POTTED

MEAT, 3 cans 10c

ROLL CALL

FLOUR, 24 lbs. 65c

RED APPLE

FLOUR, 24 lbs. 75c

LARD, 8 lb. carton 79c

DIXIE STORE

Dixie or Swiss Evaporated

Milk 4 Large or 8 Small Cans 25c

Chipso 3 boxes 25c

Crescent Salad

Dressing Pint 15c
Quart 25c

Navy Beans

Blackeyed Peas lb. 5c

Great Northern Beans

Rice 5 lbs. 20c

Green Beans

Tomatoes 4 No. 2 cans 29c

Corn

Apple Sauce

Campbell's Tomato

Soup 2 cans 15c

Sliced Breakfast

Bacon lb. 25c

Silver Cup

Coffee lb. 17c

Alaska Pink

Salmon 2 cans 23c

Shortening 8-lb. ctn 83c

Rose Royal

Flour 24-Lb. Bag Plain or Self Rising 75c

GREEN BEANS, per lb. 5c

TOMATOES, Fancy Florida, 2 lbs. 15c

NEW POTATOES, 3 lbs. 10c

CELERY, large stalks, 2 for 15c

COUNTLESS THOUSANDS PREFER

ANN PAGE SALAD DRESSING

Pt. Jar 17c Qt. Jar 27c



FOOD STORES

COLD STREAM PINK

SALMON 2 Tall Cans 23c

A&P FRESH

PRUNES 2 Large Cans 25c

SUNNYFIELD CREAMERY

BUTTER IN QTR. LB. PRINTS lb. 35c

ANN PAGE TARTAR

SAUCE — Pint Jar — 23c

LIFEBUOY OR LUX TOILET

SOAP — — 3 Bars 20c

ATLANTIC SOAP

FLAKES — 2 Packages 25c

Cheese lb. 19c

GREEN BEANS 4 lbs. 25c

TOMATOES 2 lbs. 15c

SQUASH 2 lbs. 9c

CELERY 5c

ORANGES large, 2 doz. 35c

BANANAS lb. 5c

CARROTS 2 bunches 13c

A&P Food Stores
ONE OF CAROLINA'S LARGEST CUSTOMERS