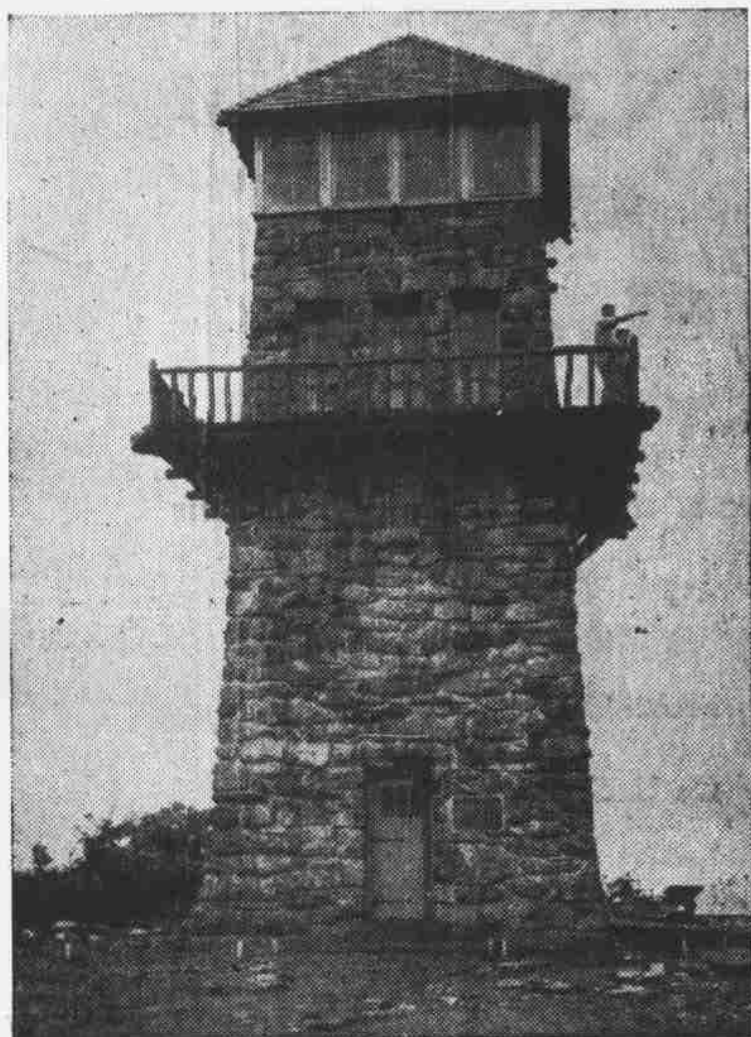


A WELCOME TO YOU! FRANKLIN THE BEAUTIFUL

A Town of Homes in the Heart of Tourist Land



JOHN BYRNE TOWER ON WAYAH BALD

Franklin is on the
Shortest Route from the South
to the Great Smoky Mountains
National Park

Located on the Little Tennessee River atop one spur of Trimont Mountain, FRANKLIN is lavish in her gifts to those seeking her hospitality.

Mountain breezes cool every home.
Scenic panoramas lie in every direction.

Franklin is CLOSER to more scenic attractions than is any other point in Western North Carolina!

Within an hour's drive from Franklin:

Wayah Bald
The Cherokee Indian Reservation
The Great Smoky Mountains National Park
Cullasaja Falls
Bridal Veil Falls

Nantahala Gorge
Town of Highlands
Whitesides
Shortoff Mountain
Standing Indian Mountain
Appalachian Trail

Not far away are the new TVA and the Carolina Aluminum company's dams with their lakes set like gems in the mountains.

Forest Service Developments Making Wonderlands Accessible

Dry Falls
Cliffside Lake and Recreational area
Van Hook Glade auto camp
Arrowood swimming pool and picnic ground
Standing Indian picnic ground

Wayah Bald picnic ground
John Byrne lookout tower topping
Wayah Bald
Winding Stairs road
Three Game refuges
Joyce Kilmer memorial forest with its virgin timber



Southern Region, U. S. Forest Photo

LOWER CULLASAJA FALLS

Encircling Franklin are 300,000 acres of National Forest that is being developed for watershed protection, timber production, wild life restoration as well as for recreation.

Here is a Sportsman's Paradise!

SPEND YOUR VACATION

WHERE NATURE'S BEAUTIES ARE AT YOUR DOOR