

Church Services

Franklin Methodist Church
The Rev. Ivon L. Roberts, Pastor
(Each Sunday)
10 a. m.—Sunday school.
11 a. m.—Worship services.
7:30 p. m.—Vesper service.

St. Agnes Episcopal Church
The Rev. Frank Bloxham, Rector
10 a. m.—Church school.
11 a. m.—Holy communion and sermon.

Presbyterian Church
Rev. J. A. Flanagan, Pastor
Franklin—(Each Sunday)
10 a. m.—Sunday school.
11 a. m.—Worship services.
Morrison—(Each Sunday)
2:30 p. m.—Sunday school.
(Each 2nd and 4th Sunday)
3:30 p. m.—Worship services.

Baptist Church
Rev. C. F. Rogers, Pastor
9:45 a. m.—Bible school.
11 a. m.—Morning worship.
6:30 p. m.—B. T. U. and Brotherhood.
7:30 p. m.—Evening worship.

Macon Circuit
Rev. J. C. Swalm, Pastor
First Sunday, 11 a. m.—Union;
2:00 p. m.—Hickory Knoll; 7:30 p. m.—Asbury.
Second Sunday, 11:00 a. m.—Mt. Zion; 2:30 p. m., Maiden's; 7:30 p. m.—Patton's.
Third Sunday, 11:00 a. m.—Asbury; 2:00 p. m.—Mulberry; 3:00 p. m.—Dryman's; 7:30 p. m.—Union.
Fourth Sunday, 11 a. m.—Patton's; 2:30 p. m.—Maiden's; 7:30 p. m.—Mt. Zion.

St. John's Catholic Parish
Schedule of Masses:
Franklin:
2nd and 4th Sunday, 8 a. m.
Murphy:
Every 5th Sunday, 7 a. m.
Charokes:
Every 3rd Sunday, 8 a. m.
Waynesville:
Every Sunday, 11 a. m.
Canton:
Every 1st Sunday, 8 a. m.

Bryant Furniture Co.
EVERYTHING FOR THE HOME
AT REASONABLE PRICES
Phone 106 Franklin, N. C.

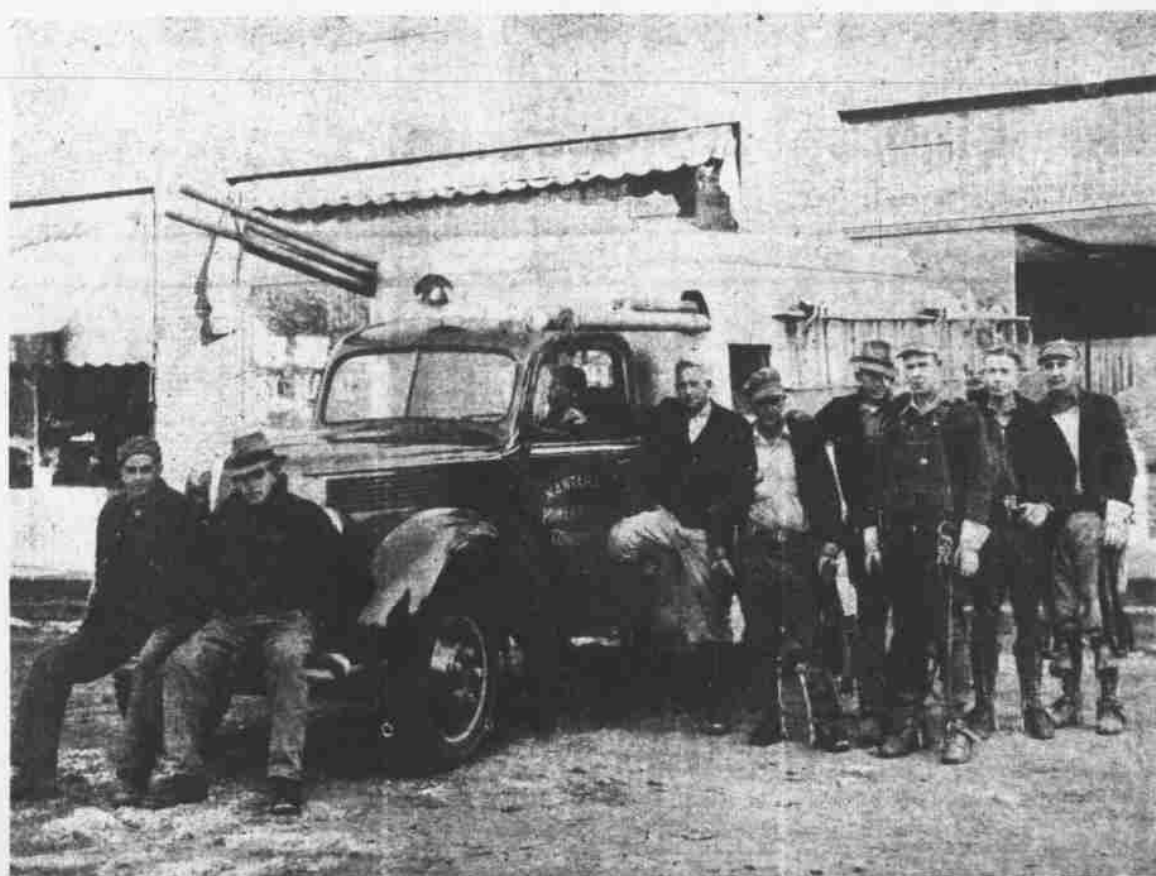
Loyal Order of Moose
Franklin Lodge, No. 452 Meets
In American Legion Hall
Every Thursday Night
7:30 O'CLOCK
Billy Bryson, Secretary

GARDUATION PHOTOGRAPHS
You will want to remember your children as they appeared at important stages of their life. What day or occasion is more important than graduation? Photographs are always appropriate and appreciated gifts.
Crisp's Studio
FRANKLIN N. C.

Join the Crowd
ENJOY THE BEST OF FOOD
CHICKEN AND STEAK
DINNERS AT
CAGLE'S CAFE
A. G. CAGLE, Owner
FRANKLIN, N. C.
We Appreciate Your Patronage

SELECT THIS PACKAGE
when buying coffee
AND BE ASSURED OF FINE FRESH FLAVORFUL COFFEE
BLUE RIDGE COFFEE
"TOPS IN TASTE"
Free Premium Coupons in Every Bag

Power Company Buys New Truck



The modern truck, recently bought by the Nantahala Power and Light Company, is shown above with the line crew standing in the foreground. They are, left to right: John Waldroop, Henry Wilkie, Henry Turpin, foreman; C. E. McFalls, Henry Reed, Fred Grant, Eb Bullock and James Cunningham.

SIGNING AAA FARM PLAN



Here is a farmer doing what thousands of other farmers have done during the past few weeks, signing his AAA Farm Plan for 1940. There are still many farmers in the state who have not worked out their Farm Plan, which is essential before any Government payments can be received for agricultural conservation and soil building work this year. E. Y. Floyd, AAA executive officer of N. C. State College, announces that April 15 is the deadline for signing Farm Plans. There is nothing binding about the Farm Plan. If something happens to prevent carrying out the practices listed, then a farmer can still earn his payments by carrying out other practices named on the back of the Farm Plan. However, Floyd said that every farmer who has not done so should immediately visit his county AAA office and work out a plan. There will be no extension of time beyond April 15. The farmers in the above picture are; left to right: Claude C. Falls of Fallston, George Wolf of Waco, and Mike L. Borders, member of the Cleveland County AAA Committee.

Power Co. Buys Modern Truck For Line Crew Use

Early this year the Nantahala Power and Light company purchased for use by its line construction and maintenance crew, a new and completely modern truck.

The truck includes many new features for the convenience, safety and comfort of the crew, as well as complete provisions to properly handle the work of building and maintaining lines. The most interesting feature is a special cab or compartment in the body of the truck, where members of the crew can ride in comfort. The cab, which, as well as the main cab, can be heated in cold weather, is especially welcome, as it is often necessary for the crew to ride many miles in bad weather in the course of work in providing and maintaining service for the customers of the company.

The entire body is built of metal, strongly reinforced, for maximum safety and durability. The truck carries a water cask for drinking water. The large spot light on the truck cab, which can be pointed in any direction, and throws a bright beam for several hundred yards, is very useful for emergency work at night if it is ever necessary to restore service during or after a storm.

The truck carries a complete derrick, which allows heavy poles to be set quickly and with a minimum of effort. This derrick is normally dismantled, and the parts carried in the upper left-hand section of the body, but only a few minutes' time is required to assemble and erect the derrick for use. A powerful winch in the truck chassis, driven by the truck motor, operates the steel cable which is used in connection with the derrick. In addition to setting poles, the derrick has been found very useful in handling heavy transformers, reels of cable, and other heavy equipment.

The truck has a large amount of space for carrying all the tools and equipment necessary for line work. All of the ropes and tackles are protected from the weather.

The line crew makes its headquarters in Franklin, but works over the entire system of lines of the company, which extend for miles in every direction from Franklin. The company lines cover

a considerable portion of Macon county, and extend into the upper portion of Jackson county, to Cashiers Valley and towards Lake Toxaway. In another direction they extend to Sylva, Cullowhee and East LaPorte. In the Andrews area, the lines extend nearly to Murphy, and to Topton. The main transmission lines of the company extend from Santeetlah power house, near Tapoco to Fontana, and to Robbinsville, Nantahala, West's Mill and Sylva.

Several members of the crew have been with the company for many years. The foreman, Henry Turpin, first worked for the line department of the company in 1929, and was made foreman in 1931. Henry Reed first worked for the company on its line crew in 1930, and C. E. McFalls entered the line department in 1931, although he had previously worked with the company in 1929. Messrs Turpin, McFalls and Reed had headquarters in Andrews until January, 1935, when they moved to Franklin, after the company acquired the Franklin system. Eb Bullock started work in 1933 in Franklin soon after the company acquired the Franklin system, and in addition to occasionally helping with line work, acts as a power house operator and as service man. Fred Grant joined the crew in 1934. James Cunningham started work early in 1939, while John Waldroop started a little later in 1939. The most recent addition to the crew is Henry Wilkie, who started work early this year.

State College Answers Timely Farm Questions

Q. Is it too late to seed pastures?
A. The best dates for seeding in the spring is from February 15 to April 1. Carpet grass, dallis grass and lespedeza should be seeded during this period and may be sown on top of other grasses and clovers planted the previous fall. Bermuda grass seed is rarely used in this state, but if the seed is used, they should be planted in May or June. Cuttings from this crop are usually set out in February or March.

Q. What is the best control for tobacco bud worms?

A. The poisoned corn meal bait is the best known control. This is made by carefully mixing one pound of arsenate of lead with 50 pounds of corn meal. Applications of this poison should be made early in the morning when the bud is open. A small pinch of the mixture should be dropped in the center of the bud. Applications should be made every week or 10 days until the plants are topped. One peck of the mixture will be sufficient to cover one acre of tobacco.

Q. When should culling be started in the poultry flock?

A. For best results, culling should be a continuous process, but in the young flock the birds should be culled when eight to twelve weeks old. This is especially true when cockerels are to be raised for breeders. All through the growing period the birds should be carefully watched and all cockerels or pullets showing lack of vigor and development should be discarded. Select only those birds that are alert, vigorous, and show a healthful development.

Dim your lights when meeting another car. Glaring headlights sometimes make glaring headlines.

Baptist Ministers Will Meet In Bryson City

A conference of the Baptist pastors of Western North Carolina will be held in Bryson City on Monday, April 15, and the following program has been arranged for the occasion:

10:00 a. m.—Devotional, Rev. B. F. Shope.

10:15 a. m.—The Minister and His Money, Rev. E. F. Baker.

10:45 a. m.—The Minister and His Sermon Preparation, Rev. H. K. Masteller.

11:15 a. m.—The Minister and His Books, Rev. T. F. Deitz.

12:00 Noon—Lunch.

1:00 p. m.—The Minister and His Brethren, Rev. C. F. Rogers.

1:45 p. m.—Round table conference led by J. C. Pipes.

Farm Fruit Budget Told By Niswonger

H. R. Niswonger, horticulturist of the State college extension service, says every member of a farm family should not only eat the proverbial "apple a day to keep the doctor away," but also should have a fruit budget for the year.

He recommends 12 pounds of dried fruit, 24 quarts of canned fruits, and five pints of jelly for each member of the family. To help farm people fill their fruit budgets, the horticulturist makes the following suggestions about cultivation and fertilization: Spray your apple and peach trees in order to have fruit comparatively free from worms and rot diseases.

Fertilize bearing grape vines with one to two pounds of a 5-7-5 commercial fertilizer per vine. Stable or chicken manure is also good. Do not apply fertilizer or manure close to the vine. Thin out the bearing raspberry rows so that the remaining canes will be three to every foot of row. Fertilize the raspberries which are bearing with manure or two pounds of nitrate of soda per 100-foot row.

Newly set grape vines, raspberry, and dewberry plants should be fertilized with manure or one tablespoonful of nitrate of soda per plant. Apply in a ring at a distance of one foot from the plant. Cut each grape vine and berry plant to a few inches above the ground, leaving several buds.

Care should be exercised in hoeing young raspberry plants so as not to cut off the new shoots that develop from the roots at the base of the plants. A garden weeder is better than a hoe to pulverize the soil around the base of the plants.

Marine Battalion Goes To Hawaii

It has been announced that the 3rd Marine Defence battalion, which has been stationed at the U. S. Marine barracks, Parris Island, S. C., embarked aboard the U. S. S. Chaumont, at Charleston, S. C., for transportation to their new post in the Hawaiian Islands.

This battalion is one of four formed last fall for the defence of certain naval bases, and is armed with all means of defence against aircraft; as well as with 5-inch artillery.

The personnel of this organization includes a number of men from this territory who enlisted at the District U. S. Marine Corps recruiting station, located in the municipal auditorium, Macon, Ga. Any young men from this area may receive full information regarding the life and opportunities in the Marine Corps by writing to, or calling in person at the Macon recruiting station.

Today's Biggest Bargain!



BENDIX HOME LAUNDRY

\$159.50

INSTALLED

AUTOMATICALLY washes, rinses and damp-dries... without a bit of attention from you! All the fully automatic action of the famous De Luxe Model. See the new Standard Bendix on display today. Long, easy terms... attractive trade-in offer for your old washer.

Bryant Furniture Company
FRANKLIN, N. C.

Notice of County-Wide New Registration

Whereas at the regular meeting of the Macon County Board of Elections held according to law on March 23, 1940, the following resolution was adopted by the said Macon County Board of Elections:

"Whereas, Chapter 263 of the Public Laws of 1939 provides that prior to the 1940 Primary Elections there shall be a revision made of the registration books and a re-listing of the voters in each and every precinct in the State, or in lieu thereof, a new registration, and

"Whereas, Section one of said Act provides that each County Board of Elections, at its first meeting on March 23, 1940, shall determine whether there shall be a re-listing of the voters or a new registration held in the county, and shall make the necessary preparations therefor, and

"Whereas, this Board is of the opinion that a new registration of the voters of the county is both necessary and advisable:

"THEREFORE, BE IT RESOLVED:

"That a new registration of the voters in this county shall be held in all the precincts of this county during the regular registration period beginning at 9 o'clock A. M. on Saturday, April 27, and closing at sunset on Saturday, May 11; That the Chairman of this Board shall deliver to each registrar in the county two new primary registration books and one new general election registration book, together with a copy of Chapter 263, Public Laws 1939, setting forth the procedure for the new registration, and shall also furnish to each registrar complete instructions with respect to the holding of the new registration: That the said Chairman of this board shall immediately give the 20 days public notice of the new registration as required by C. S. 5934: And that the said Chairman of this Board shall immediately furnish to the State Board of Elections a copy of this resolution."

Notice is hereby given that there will be a new registration of all the voters in the different precincts in Macon County during the regular registration period beginning at nine o'clock A. M. on Saturday, April 27, and closing at sunset on Saturday, May 11.

It will be necessary for all voters to register to entitle them to vote in the primary to be held on May 25, 1940.

This the 2nd day of April, 1940.

R. S. JONES

Chairman Macon County Board of Elections.