

THOUSANDS DIE IN YULE FIRES

Property Losses Topped \$59,000,000 Last December

For well over a decade death and property loss during December month have topped the tragic toll for any one month of the year, safety experts of the National Conservation Bu-

reau point out in warning against increased winter fire hazards. Last December more than a thousand lives were lost and \$59,000,000 in property went up in smoke.

Approximately four-fifths of these wintertime fires are in homes and almost all of them could be directly attributed to carelessness.

"It seems a paradox that people attempting to make the Christmas season the gayest of the year should turn it into one tragedy and regret by neglecting the simple precautionary

measures of sane fire prevention," said Harold R. Danford, director of safety education for the bureau, the accident prevention division of the Association of Casualty and Surety companies. "Yet year after year they leave stoves burning while they go shopping, toss cigarettes on tinder-like decorations, attempt Christmas lighting displays with faulty fixtures, and engage in a dozen other careless practices."

Christmas tree fires are among the big killers during the season, Mr. Danford said, adding that trees should be set up so their bases are in containers of water to keep them fresh and reduce their flammability. Non-flammable decorations should be purchased when possible. If they are not available, a simple fireproofing compound containing seven ounces of borax and three ounces of boric acid in two quarts of hot water can be mixed to sprinkle over cotton "snow" and other similar decorations.

Be certain Christmas tree lights are in good condition; shorting wires cause many fires, Mr. Danford warned. As a last reminder, he urged that the dead and dry Yule tree be disposed of—to a safe place where it can be burned—as soon as possible after the holiday.

Church Of Incarnation Will Have Oil Furnace

Preparations were begun Monday for the installation of an oil burning hot air furnace in the Church of the Incarnation. A new flue will replace the former flue and all work is expected to be completed within the next two weeks.

R. F. D. 52 YEARS OLD
This month rural free delivery service embarks on its fifty-second year of service to rural America. Rural mail carriers, 32,189 of them, travel 1,441,994 miles each day. They serve 29,641,722 patrons along their routes. Yet half the mileage they cover each day through rain and mud and blizzard is over dirt roads.

A finish for interior surfaces that will withstand marketing by water, heat, alcohol, acids and grease seems a possibility, says the U. S. Department of Agriculture, as a result of recent research which has developed from sugar a new product known as allyl sucrose.

Timber cut from the national forests in the quarter ending September 30, 1947, totaled 1,127,000,000 board feet, an increase of 24 million board feet above the amount cut in the same quarter last year.

A glossary of terms used in the cotton mills runs into thousands of words.

wash day is a picnic . . .

If you send the hard-to-iron and heavy pieces to the laundry.

Highlands Cleaners and Laundry

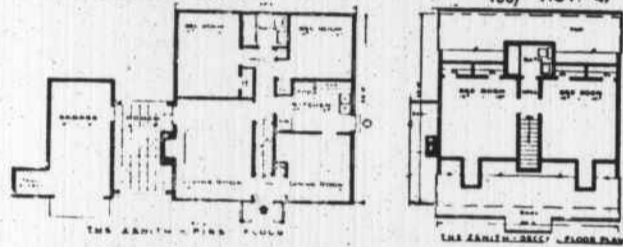
IN FRANKLIN MONDAYS AND THURSDAYS

Phone Highlands 98



© HOUSING PLAN SERVICE, Inc.

1807 NOV. '47



Whether you select this house plan, or some other, consult us about your needs in

Lumber

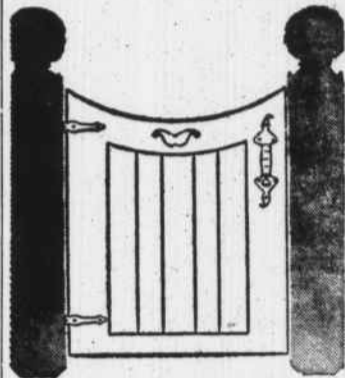
— OR —

Builders' Hardware

FRANKLIN HARDWARE CO.

On Square

Phone 117



DO YOU KNOW WHAT THESE SYMBOLS STAND FOR?



The Pennsylvania Dutch had a quaint custom—still found in some sections—of painting their gate posts blue to indicate there was a marriageable daughter in the house. This forthright symbol invited eligible gentlemen (single or widowers) to pay court. Object: Matrimony.

More than 10,000 selected, independent pharmacists from coast to coast display the familiar Rexall symbol—always the indication of reliable pharmaceutical service. This trade-mark is your assurance of fine, laboratory-controlled Rexall drug products and excellent pharmaceutical skill. A Rexall Drug Store is bound to be near you.

ANGEL'S



Drug Store

Poly
PUT THE KETTLE ON

OUR OWN TEA
NECTAR TEA

LET'S ALL HAVE Flavor Tested Tea!

A popular blend, full-bodied and vigorous
OUR OWN TEA 1/2-Lb. 39c
TEA BAGS 16 Ct. 13c

A national favorite, rich and flavorful
NECTAR TEA 1/2-Lb. 41c
TEA BAGS 16 Ct. 14c

Testing and re-testing by flavor experts—that's why you get so much rich flavor in each and every cup of Our Own, Nectar and Mayfair. And they cost less than a cent a thrifty cupful!



Salt Morton's	28-Oz. Pkg.	9c
Staley's Waffle Syrup	12-Oz. Bot.	18c
Swift's Brand Lard	1-Lb. Can	39c
Nabisco Crackers Premium	1-Lb. Pkg.	23c
Sunnyfield Flour For Pancakes	20-Oz. Pkg.	14c
Ann Page Blended Syrup	Pt. Bot.	27c

IVORY SOAP
Lge. Bar 18c
LIMITED QUANTITIES

IVORY FLAKES
Lge. Pkg. 35c
LIMITED QUANTITIES

DUZ
Lge. Pkg. 35c
LIMITED QUANTITIES

LIFEBUOY SOAP
2 Bars 21c
LIMITED QUANTITIES

CRISCO
3-Lb. Cans \$1.08

LUX FLAKES
Lge. Pkg. 35c
LIMITED QUANTITIES

WESSON OIL
Pt. Can 41c

SNOWDRIFT
3-Lb. Can \$1.08

TOMATO SOUP, Campbells, 2 for	21c
PINEAPPLE JUICE, 46 oz. can	41c
CORNED BEEF, 12 oz. can	47c
SALMON, pink, 1 lb. can	49c
BROWN SUGAR, 1 lb. pkg.	10c
CONDENSED MILK, Eagle Brand, can	25c
TOMATO JUICE, 46 oz. can	21c
SPINACH, No. 2 1/2 can	15c
HOMINY, No. 2 1/2 can	14c
NAPKINS, 80 count	13c
WALDORF TISSUE, roll	6c

Our Fruits and Vegetables are **Garden-Fresh**

ORANGES, doz.	25c
GRAPEFRUIT, 2 for	9c
LEMONS, doz.	30c
GRAPES, 2 lbs. for	23c
POTATOES, 10 lb. bag	42c
PEARS (Fall Russet), 2 lbs. for	25c
APPLES (Wash. Del.), 2 lbs. for	25c
ONIONS, 2 lbs. for	15c
CAULIFLOWER, lb.	20c
BRUSSEL SPROUTS, qt.	25c
CARROTS, bunch	13c
TURNIPS, bunch	15c
CHESTNUTS, Italian, lb.	39c

BALDWIN MEATS

Grade "A" ROUND STEAK	57c lb.
Grade "A" Boneless RIB ROAST	49c lb.
Grade "A" (Bone in) CHUCK ROAST	39c lb.
Boneless STEW	45c lb.
RIB (Bone in) STEW	29c lb.
Fresh Ground BEEF	39c lb.
Loin Cuts PORK CHOPS	59c lb.
Whole or Half PORK HAMS	45c lb.
Pure Pork SAUSAGE	45c lb.

MARKET GROCERIES

No. 2 Can APPLE SAUCE	10c
No. 2 Can SPAGETTI DINNER	10c
15 Oz. Pkg. SEEDLESS RAISINS	15c
No. 2 1/2 Can PIE PEACHES	25c
Regular Size PHILLIPS SOUPS	3 for 25c
No. 2 Can GREEN BEANS	14c
46 Oz. Can Libby's TOMATO JUICE	25c
3 lb. Bag COFFEE SHOP COFFEE	\$1.17
1 Lb. Jar Strawberry PRESERVES	35c

FRUIT CAKES

KERN'S 2 lb.	\$1.50
KERN'S 3 lb.	\$2.25
KERN'S 5 lb.	\$3.75

SOAP

Large Size DUZ	36c
Large Size Bar IVORY OR SWAN SOAP	17 1/2c

A&P Dried PRUNES	1-lb. Pkg.	19c
Phillips with Franks BEANS	12-oz. Can	17c
Reliable PEAS	No. 2 Can	19c
Encore Prepared SPAGHETTI	15 1/2-oz. Can	10c
Comstock Pie APPLES	No. 2 Can	19c
Gulf Best Candied YAMS	No. 2 1/2 Can	14c
Whitehouse Evap. MILK	3 Tall Cans	35c
Mild American CHEESE	Lb.	50c
MARVEL BREAD		
SANDWICH 18-Oz. Loaf	REGULAR PAN 18-Oz. Loaf	13c 12c

Armour's TREET	12-oz. Can	45c
A&P Apple SAUCE	No. 2 Can	17c
Sultana Fruit COCKTAIL	No. 1 Can	24c
Ann Page Salad DRESSING	Pt. Jar	33c
Iona PEAS	No. 2 Can	10c
Iona COCOA	1-lb. Pkg.	27c
Duff's Hot ROLL MIX	Pkg.	27c
Ann Page MACARONI	8-oz. Pkg.	9c
MILD AND MELLOW 8 O'CLOCK COFFEE		
1-Lb. Bag	2 1-Lb. Bag	39c 77c

Baldwin Market

Phone 85