

West's Mill

Charles Owens, of Asheville, recently came over on business and to visit his mother, Mrs. Clara W. Owens, and brother, Johnny.

Mr. and Mrs. Alvin C. Lory, and two children, of Arizona, are visiting relatives here.

Mr. and Mrs. Wade Cordell and small daughter, of Fontana, spent the week-end with relatives here.

Mrs. Ada Hyatt spent several days recently visiting relatives here.

Mr. and Mrs. Harold Dillard and small daughter, Patty, of Sylva and Bryson City, spent the week with home folks.

Thad Byrd, of Detroit, Mich., spent several days recently visiting relatives here.

Mrs. Jennie Clouse, of High-Point, spent several days visiting relatives here recently.

Miss Gladys Woodard, of Asheville, spent the week with relatives.

Ralph Cody, who is working near Bryson City spent last week-end with home folk.

Bob Woodard and Bob West, who are employed in Lenoir, spent last week-end with relatives.

Miss Carolyn Medford, of Bryson City, spent a part of last week visiting her grandparents, Mr. and Mrs. Doc Bird.

Miss Helen Browning, of Chattanooga, spent last week-end with home folks.

Mr. and Mrs. Rogers Dalton, of Gastonia, visited relatives here last week.

Mr. and Mrs. Carlyle Sheffield and two children, of Canton, spent a recent Sunday with home folk.

Mr. and Mrs. C. N. West visited their daughter, Ruth, at Converse college recently.

Mrs. L. J. Smith and daughter, Mrs. A. H. Wilen, and two children of Cullowhee, were here on business and visiting relatives last week.

Legionnaires Attend Asheville Gathering

Three members of the local American Legion post—W. H. Finley, commander, E. G. Crawford, adjutant, and Frank Reece, representing the post's membership committee—attended the luncheon in Asheville Saturday, at which James F. O'Neil, of Manchester, N. H., national Legion commander, was the speaker. The meeting was held at the Battery Park hotel.

PLANS ARE LAID BY REPUBLICANS

Delegates Instructed; Precinct Meets Set For March 20

Macon County Republicans, meeting at the courthouse here Saturday afternoon, authorized any member of the party from this county who will attend to go to the Republican congressional and state conventions as official delegates. This will also apply to the Republican judicial and senatorial district conventions, if such are held.

Saturday's meeting also instructed this county's delegates to the congressional convention, to be held at Sylva tomorrow (Friday) at 2 p. m. to vote for Ralf Fisher, of Brevard, and W. C. Hennessee, of Sylva, as this district's delegates to the national Republican convention. It instructed the Macon delegates to the state convention to vote for George Pritchard, of Asheville, as the party's nominee for governor, if his name is presented. The state convention is set for 10 a. m. March 18 in Durham.

Republicans were called to meet in the various precincts of this county Saturday, March 20, to perfect precinct organizations, and to meet in county convention at the courthouse here at 2 p. m. Saturday, March 27.

At that time the selection of a new county chairman is expected to come up. J. H. Dean, present chairman, who presided at Saturday's meeting, said that he cannot serve longer.

W. L. McCoy, in a brief talk urged the importance of all eligible voters casting their ballots, and said he has a list of eligible voters in Macon County which he will turn over to the Republican chairman. This, he said, will make it possible to check on absentee votes cast.

Saturday's session was held, despite the snow. About 20 men were present.

October milk production on United States farms this year totaled 8.9 billion pounds.

For You who take Pride in your Cooking



Fine Matched "Health" Cookware

Vitamins preserve health . . . Health Cook Ware preserves vitamins.

Just arrived! . . . the Health Pressure Cooker and beautifully gleaming, matched cookware items of genuine Health molded aluminum you've been hearing so much about. Thick, sturdy . . . guaranteed to stand up under heaviest use . . . Here's modern cookware that's designed for top-stove, vitamin-retaining waterless cooking to give you the most delicious, healthful food you've ever eaten.

Pressure Canner-Cooker—Model 22X . . . for speedy canning and cooking. Noted for safety and ease of operation. Patented instant "turn-look" lid; fingertip "sure-look" lever. Capacity 22 liquid qts. (holds 18 No. 2 cans; 20 pt. jars; 7 qt. jars; or 4 half gallon jars). Complete with canning basket and Instruction Manual. **19.70**

Sauce Pan with Cover, 1 qt.—Model 441 . . . for leisurely cooking. Economical to use, as low flame gives best results. **3.45**

Sauce Pan with Cover, 2 qt.—Model 442 . . . streamlined, and with a high luster. Heat is distributed evenly over the entire utensil. **3.95**

Sauce Pan with Cover, 3 qt.—Model 443 . . . attractive and efficient with highdome self-basting cover. Foods cook in their own natural juices. **4.45**

Skillet-Chicken Fryer with Cover, 10 1/2"—Model 4410 . . . fries chicken, chops, etc. to a delicious golden brown. Health molded aluminum. **5.90**

Dutch Oven with Cover—Model 4490 . . . for waterless cooking that means foods retain their full flavor, food values and vitamins. Use as top-stove roaster. **6.90**

West Coast prices 5% higher.

MACON COUNTY SUPPLY CO.

Relief At Last For Your Cough

Creomulsion relieves promptly because it goes right to the seat of the trouble to help loosen and expel germ laden phlegm, and aid nature to soothe and heal raw, tender, inflamed bronchial mucous membranes. Tell your druggist to sell you a bottle of Creomulsion with the understanding you must like the way it quickly allays the cough or you are to have your money back.

CREOMULSION for Coughs, Chest Colds, Bronchitis



Carter Wholesale Co., Inc. Distributors Toccoa, Ga.

FRANKLIN LIVESTOCK AUCTION

Bring Your Livestock HERE For Highest Prices Sale Every Wednesday



FLOWERS

The Perfect Easter Gift . . .

Place your order now for Corsages and Pot Plants.

West's Florists Phone 234

ASBESTOS AND SOAPSTONE

Said To Be The Largest Boulders and Deposits in the U. S.

Has been tested, and stands a white heat No Iron Garnets in it to Cause Explosion

90 Acres in Macon County

Will Sell or Lease

MINERAL RIGHTS

— See —

John M. Russell

Cullasaja, N. C.

Or

M. Higdon, at office near Franklin Depot

More Than \$200,000.00 Cash Must Be Won!

Over 15,000 Cash Prizes in Pepsi-Cola's New "Treasure Top" Sweepstakes and Contests!

Here's a swell new contest that gives away cash—and nothing but cash! \$203,725.00 (including dealer prizes) to be exact! 51 Cash Prizes each month in your state! Big-Monthly National Prizes! Huge Family Sweepstakes Prizes . . . 1st Prize \$25,000.00! For fun—for cash—there's nothing like Pepsi-Cola's sensational new contest. Enter now—enter often. Remember, every entry* gets a Treasure Certificate for the big Family Sweepstakes Prizes!



Be a winner—enter now!

under the cork in every Pepsi-Cola bottle top. Collect 'em... swap 'em...it's fun.

Look for the hidden design

*Entries should be complete and accompanied by a "Treasure Top".

GET ENTRY BLANKS AT YOUR STORE

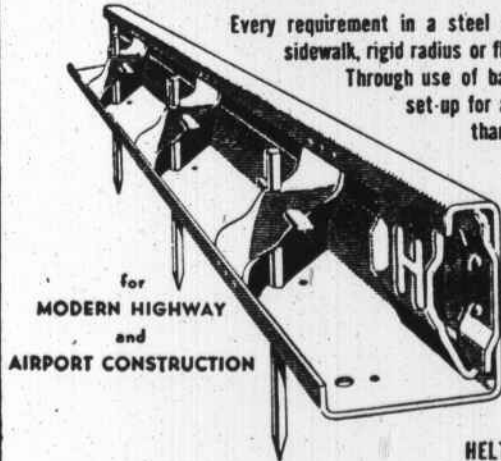
Pepsi-Cola Company, Long Island City, N. Y. Franchised Bottler:



Franchised Bottler: Pepsi-Cola Bottling Co. of Bryson City

HELTZEL STEEL FORMS MEAN Concrete Control

Every requirement in a steel street form—curb, combined curb and gutter, sidewalk, rigid radius or flexible—can be solved with HELTZEL equipment. Through use of basic members, singly or in combination, a form set-up for any specified curb can be provided. For more than thirty years contractors and engineers have recognized the superiority of HELTZEL Steel Forms. Their adaptability eliminates expensive special mill work and slow, inaccurate form-setting practices. Rigid and Flexible Radius forms interlock with straight steel forms to provide a wide range of applications. Each is made from heavy gauge carbon magnesium steel, with design features that add strength and maximum rigidity.



for MODERN HIGHWAY and AIRPORT CONSTRUCTION

HELTZEL STEEL FORMS ARE THE FASTEST-SETTING EASIEST-STRIPPING EQUIPMENT AVAILABLE

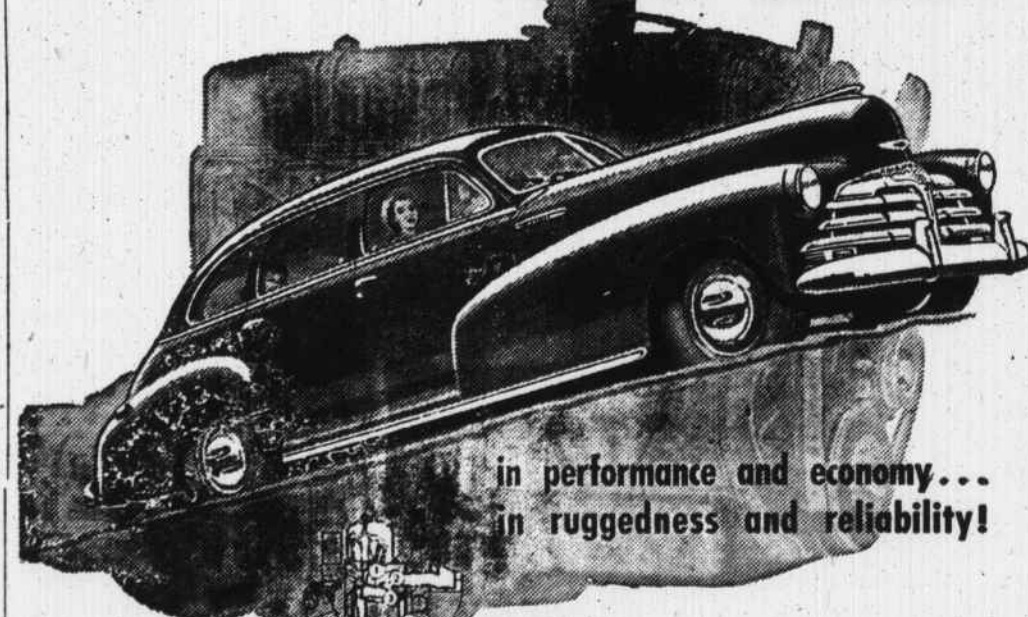
International Diesel Power

NORTH CAROLINA EQUIPMENT COMPANY

Raleigh, N. C. Phone 8836 Wilmington, N. C. Phone 2-2417 Charlotte, N. C. Phone 4-4661 Asheville, N. C. Phone 789

VALVE-IN-HEAD

is far ahead!



in performance and economy... in ruggedness and reliability!

1 In the world's chambers: Chevrolet engine, the valves are located at the head of the cylinder, directly over the pistons . . . hence the name, Valve-in-Head.

2 Valve-in-Head design provides faster intake of fuel mixture . . . and quicker and more complete exhaust of burned gases . . . all of which contributes to better performance and economy.

3 Valve-in-Head design also permits a more compact combustion chamber; and this, together with Chevrolet's "Blue Flame" combustion, means more driving power for the pistons—less heat loss—and maximum economy.

Valve-in-Head engines are inherently easier to cool; and Chevrolet's individual cooling of cylinders prevents waste of power—promotes efficient operation—prolongs engine life.



Automotive experts and millions of motorists agree: Valve-in-Head is far ahead because it gives an outstanding combination of performance, endurance, dependability and economy. . . . Chevrolet—master builder of this master motor—has proved this by producing more than 20 million Valve-in-Head engines during the past thirty-seven years—engines which hold the distinction of having delivered more billions of miles of satisfaction, to more owners, over a longer period, than any other power-plant built today! Chevrolet's World's Champion Valve-in-Head engine is another powerful reason why CHEVROLET AND ONLY CHEVROLET IS FIRST . . . another convincing proof that only Chevrolet gives BIG-CAR QUALITY AT LOWEST COST!

CHEVROLET and ONLY CHEVROLET IS FIRST!

Burrell Motor Co.