

Auto Inspection Law

(This is one of a series of the motoring public with articles designed to acquaint the requirements of the Motor Vehicle Inspection program).

RALEIGH.—Safety experts say that one out of every five cars has defective lighting equipment.

The importance of good headlights for the prevention of accidents is emphasized by the fact that in 1946, 550 fatal accidents and 12,340 non-fatal in the United States were caused by either glaring headlights or cases where the headlights were missing or too dim.

When you take your car or truck to one of the state's 40

mechanical inspection lanes this year for its "physical check-up", certain headlight requirements must be met—or the car will be disapproved.

The Manual of Motor Vehicle mechanical inspection requirements has this to say about headlights:

"All motor vehicles shall be equipped with two headlights, the assemblies of which shall be of an approved type and in good working order. Each headlight shall be capable of producing at least 3,750 apparent beam candlepower on the high or driving beam.

"On symmetrical, multiple beam headlights, the highest, or driving beam, of each headlight shall be so aimed that the center of the high intensity portion shall not be above headlight center level nor more than seven inches below same at a distance

of 25 feet; not more than seven inches to the right or left of straight ahead at a like distance.

"On assymetric, multiply beam headlights, the high or driving beam of each headlight shall be so aimed that the center of the high intensity portion shall not be above headlight center level nor more than seven inches below same at a distance of 25 feet. The center of the high intensity portion of the driving beam of the headlight which does not regularly depress upon operation of a driving beam switch, shall be aimed not less than 13 inches to the right nor more than 19 inches to the right of straight ahead at a distance of 25 feet. The center of the high intensity portion of the opposite headlight beam shall not be aimed more than seven inches to the right or left of straight ahead at a distance of 25 feet.

"On single beam headlights the center of the high intensity portion of the beam shall not be higher than eight inches below headlight center level nor more than 13 inches below same at a distance of 25 feet, nor more than seven inches to the right or left of straight ahead at a like distance."

The headlight requirements doubtless seem very complicated to the average layman. But when you take your car for its inspection test, a testing apparatus will be able to tell in a few seconds whether your lights are capable of being approved.

But to make sure that they will meet requirements at the state inspection, the Motor Vehicles department is urging you to have a mechanic give them a prior check-up. Most garages will give you a free inspection.

Motorbikes And Scooters Must Be Inspected, Too

The State Motor Vehicles Department has announced today that the new inspection law requires that trailers, motorcycles, scooters, and motorbikes be inspected along with all automobiles and trucks in the state.

Arthur T. Moore, chief of the Mechanical Inspection Division, said that since the law requires that these vehicles be registered, it also requires that they be inspected for safe mechanical condition.

There is a provision, however, that farm trailers of less than 2,500 pounds gross weight will be inspected free of charge.

Rural Mail Carrier Examination Will Be Conducted Here Soon

A civil service examination to fill a rural mail carrier vacancy at the Franklin post office will be held here in the near future, it has been announced.

Persons interested may obtain application blanks at the post office here, and applications must be on file with the U. S. Civil Service commission, Washington 25, D. C., prior to the close of the business day April 22.

A carrier vacancy was created by the retirement several weeks ago of Harold T. Sloan.

The rural carrier salary on a standard route of 30 miles is \$2,020 per year, with an additional \$20 a year for each additional mile on the route.

Better Hurry

If Your Surname Begins With C Or D

If you're one of the 150,000 drivers in the state with a surname beginning with C or D, you'd better get busy, according to Robert V. Hooper, who comes here Wednesday and Thursdays to give driver's license tests.

The Motor Vehicle department reports that comparatively few C and D drivers have taken their new drivers' test, and they have only from now until June 30 to take it. After that date, the law steps in, any person, whose last name begins with C or D, caught driving on an old license after that date, will be charged with a misdemeanor, subject to a fine of not less than \$25.

Department officials stated that C and D drivers have had ample time to report for their new licenses, as their period began on January 1, but that most of them have consistently put off the task.

Now they risk running into long lines of applicants at the license examining station, for June 30, in addition to being the deadline for C and D drivers, is also the deadline for the renewal of chauffeurs' licenses, which will mean a double load at examining stations.

The department urged all C and D drivers to take a new examination immediately in compliance with the highway safety act, passed by the last legislature. The examination is in four parts: A highway sign test; a road rules test; a vision test; and an actual driving test.

Mr. Hooper can be found, Wednesdays and Thursdays, at the clerk of the court's office.

Scout Area Committee To Meet Friday Night

The Smoky Mountain district Boy Scout committee will hold its monthly dinner meeting at Hotel Edwards, in Highlands, tomorrow (Friday) evening at 7 o'clock, it has been announced by W. C. Hennessee, district chairman.

In 1870, there were four persons for every cow in the U. S.

FRANKLIN LIVESTOCK AUCTION

Bring Your Livestock HERE For Highest Prices Sale Every Wednesday

THE CHICKS ARE COMING!



Give them a Good Start with CHESTERFIELD STARTING MASH

Available in Dress Print Bags ROY F. CUNNINGHAM Franklin, N. C.

We Want To Buy . . .

- 4/4" Oak, Green, Rough cut 1-1/8" Thick
- 5/8" Oak, Green, Rough cut 3/4" Thick
- 4/4" Maple, Green, Rough cut 1-1/8" Thick
- 4/4" Poplar, Green, Rough cut 1-1/8" Thick

Atlanta Oak Flooring Co.

See Dave Angel, Franklin, N. C.

MARKETING with Marjorie

In the spring a housewife's fancy rightly turns to thoughts of cleaning. But she still can't neglect thoughts of food for her brood. Below—some of mine:

LIGHTNING LUNCH

When hungry small fry come tearing into the house just as you're in the midst of tearing it apart, split, toast, and butter as many MARVEL SANDWICH ROLLS as they can eat (at least 2 apiece if they're as fond of A&P's delicious, oven-fresh rolls as my youngsters are!)

spread with peanut butter, jelly or cheese . . . and sound roll call! P. S. Here's another lunch for lunch: MARVEL SANDWICH ROLLS with chopped round steak. They make a hamburger heaven!

SPEEDY SUPPER

Do you have to hustle to rustle up supper on cleaning day? Serve A&P'S ANN PAGE PREPARED SPAGHETTI in its own tasty tomato and cheese sauce. Or combine a can of it with a cup of sliced onions sautéed in fat; pile into lengthwise halves of green peppers (boiled 5 mins. in salted water); place in shallow baking dish with a little water, and bake in moderate oven, 375° F., 25 mins. Serves 4.

LINOLEUM LOW-DOWN

If "water, water everywhere" is your spring-cleaning slogan, remember: Linoleum, like small boys, doesn't take kindly to too much water. Wash it with as little as possible, working on a small area at a time. When dry, apply BRIGHT SAIL LIQUID WAX, which requires no rubbing or polishing. You'll take a shine to it and to all A&P'S BRIGHT SAIL cleaning aids!

FISH FLASH

For an extra-easy dish, choose fillets of fish! And for an extra-flavorful fillet, fill it! Like this: Wipe 1 lb. of fillets with damp cloth. Melt 1 tbsp. shortening. Add 1/2 onion (diced), 1/2 green pepper (diced), and sauté 5 mins. Add 1 tsp. Worcestershire sauce and a 27-oz. can of tangy A&P SAUERKRAUT. Spread on fillets; roll like jelly roll and fasten with toothpicks. Put remaining filling in greased casserole with fillets on top and bake in hot oven, 400° F., 25 minutes. Serves 4.



"This is very smart—they got the idea from hidden designs you'll find under Pepsi-Cola bottle tops."

- Enter Pepsi-Cola's great \$203,725.00 "Treasure Top" Sweepstakes and Contests. Over 15,000 Cash Prizes!
- Every entry gets at least a Treasure Certificate for the big Family Sweepstakes—First Prize, \$25,000.00.
- Look for hidden design under the cork in every Pepsi-Cola bottle top. Collect 'em! Swap 'em! It's fun!

GET ENTRY BLANKS AT YOUR STORE



Pepsi-Cola Company, Long Island City, N. Y. Franchised Bottler:

Franchised Bottler: Pepsi-Cola Bottling Co. of Bryson City

STILES' CABINET SHOP

(3 miles south of Franklin on Georgia Road)

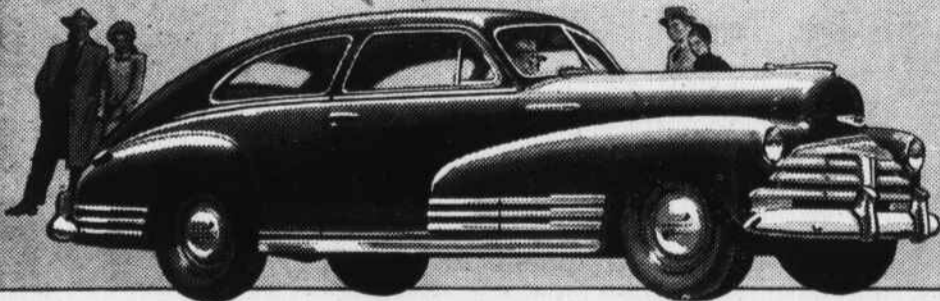
- Cabinets
- Doors
- Foundations
- Frames
- Painting
- Porches
- Roofing
- Screens
- Siding
- Storm Sash
- Truck Bodies
- Windows

General Carpentry and Remodeling

FREE ESTIMATES. All Work Guaranteed

"Talk about VALUE," says America

CHEVROLET and ONLY Chevrolet IS FIRST!



You'll find that new front-end styling—new colors—new and even more luxurious interiors add still further to the Big-Car beauty of Chevrolet's Bodies by Fisher. They're the world's finest bodies, found only on Chevrolet and higher-priced cars.



You and your family will have Big-Car safety, too. For Chevrolet brings you the three-fold protection of Fisher Unisteel body-construction, the Knee-Action Ride, and Positive-Action Hydraulic Brakes—another combination of features found only in Chevrolet and more costly cars.

Yes, from one end of the country to the other, public enthusiasm for the new 1948 Chevrolet points to a great public conviction that CHEVROLET AND ONLY CHEVROLET IS FIRST in all-round value as in popularity. More people drive Chevrolets, according to official nationwide registrations and more people want Chevrolets, according to seven independent nationwide surveys than any other make of car. Your own judgment will tell you that this is because Chevrolet gives more value . . . because it alone offers BIG-CAR QUALITY AT LOWEST COST!



As you know, public demand for new 1948 Chevrolets is at the highest level in all Chevrolet history. For that reason, we urge you to keep your present car in good running condition, pending delivery of your new Chevrolet. Come in, get skilled, dependable service, now and at regular intervals.

BURRELL MOTOR CO. Franklin, N. C. Phone 123

Have PLENTY OF WATER

without Pumping or Hauling it

Don't spend your time pumping or hauling water when a Myers Water System will pump it right where you want it at surprisingly low cost. An ample capacity Myers will save you many working hours every week and substantially increase your production of milk, meat and eggs.

Let us tell you about the many advanced features and the extra value built into this leading line of water systems.



MACON COUNTY SUPPLY CO. Franklin, N. C.