

Macon Schools Will Receive \$9,700 From Forest

WE BUY
OAK, HICKORY AND POPLAR LOGS
Also Have
OAK, HICKORY AND POPLAR
FIREWOOD FOR SALE
Apply Office
Highlands Briar

NOTICE

To the farmers of Macon and adjoining counties:

I will begin work on enlarging my roller mill next week. I have bought another roller mill and two more cleaning units which I hope to have installed and ready for operation by October 15th or November 1st. When finished I hope to have a first class flour mill.

For further information see,

J. R. BERRY

Just 10 More Days to pay your 1947 TOWN TAXES

After week of August 9th, advertising costs will be added to the taxes.

Advertising of unpaid 1947 taxes, as required by law, will start the third week in August, and continue for four weeks. At the end of that time, property on which 1947 taxes have not been paid will be sold.

Pay your taxes NOW, and save the extra costs.

Town of Franklin

Pet's Feature Flavor of the Month!



PET ICE CREAM
Chocolate Fudge Sundae

The All-American Dessert!

Pet CHOCOLATE FUDGE SUNDAE...rich, creamy-smooth Pet Vanilla Ice Cream--made only of daily fresh whole milk and daily fresh sweet cream--ribboned throughout with rich, chocolate fudge. It's a combination...together with the fresh cream flavor...which is both delicate and full-bodied--a real All-American dessert!

Take home a pint or two of PET CHOCOLATE FUDGE SUNDAE today...and, compare it with any other ice cream! We're satisfied you'll agree that...as to flavor, body, texture and quality...Pet Ice Cream tops them all!



"a health food"
Taste the Fresh Cream in Pet Ice Cream

PART OF TIMBER SALES RECEIPTS GO TO COUNTIES

42 Million Feet Cut On Nantahala Last Year Brought \$101,000

Macon County schools will receive \$9,700, income resulting from the cutting of timber on the Nantahala National Forest during the fiscal year ended June 30, it was announced this week by E. W. Renshaw, Nantahala supervisor.

Under an act governing the administration of the national forests, schools and roads in the counties in which such forests lie share in the timber cutting income. Since the state maintains the road system in this state, the shares of North Carolina counties in which national forest lands lie go to the schools.

The schools in the seven counties -- Macon, Clay, Cherokee, Graham, Swain, Jackson, and Transylvania -- in which the Nantahala Forest lies will receive approximately \$25,250. This is distributed on a basis of national forest acreage, and Macon county will receive more than one-third of the total, since more than a third of the Nantahala lies in this county.

The outstanding record of accomplishment during the war and post-war years has been maintained in a very satisfactory manner, Supervisor Renshaw said.

Private operators last year cut 42 million board feet of timber, for which they paid the federal government \$101,000, he said. This compares with almost identical volume cut during fiscal years 1946 and 1947. It is the third time in the history of the forest that timber sale receipts have exceeded a hundred thousand dollars.

On a regional-state basis, the national forests of North Carolina, the Nantahala and Pisgah, ranked third in the Southern region, with a combined cut of 65,453,000 board feet valued at \$257,300. North Carolina was out-ranked only by the Mississippi national forests with a cut of 91,140,000 board feet, and Arkansas with a cut of 67,982,000 board feet.

Sometime in January, the

seven counties in which the Nantahala National Forest is located will receive approximately \$25,000 of the year's timber income, since 25 per cent of gross receipts from the national forests is returned to the state in lieu of taxes for distribution to the counties in which the National Forests lie. Another 10 per cent, or about \$10,000, will be available to the Forest Service for construction and maintenance of roads within the Forest. The balance is retained by the U. S. Treasury, the supervisor said.

Among the larger purchasers of sawtimber were Zickgraf Lumber company, Franklin, Lake Toxaway Lumber company, English Lumber Company, and Genett Lumber company, Asheville, and W. M. Ritter Lumber company, Hayesville.

A large portion of the timber volume cut from the forest was in the form of chestnut extract-wood, which was consumed by Champion Paper and Fibre company, Mead corporation, and Teas Extract company. More important than the stumpage values paid into the U. S. Treasury and returned to the counties is the estimated \$1,400,000 which was paid out in the National Forest Counties for labor and services in logging and processing this timber, Mr. Renshaw said.

The Forest Service policy of efficient forest fire protection and good timber management practices on the national forests, he added, is rapidly building up the Nantahala National Forest to a highly productive state. This upward trend in timber production should continue for many years to come and with it will come growing support to local industries and communities dependent upon national forest timber, he declared.

The Forest Service administers the national forests, but does no logging itself on the forests, Mr. Renshaw said. The Forest Service grows the timber, evaluates it, and then sells it to private operators on a competitive bid basis. In this way, the public is assured of getting the maximum return on its timber, he explained, since no sales are made at less than the minimum acceptable value determined by experienced foresters.

A total of 323 timber sales were made on the Nantahala National Forest during the past fiscal year.

"Chicken in the Basket"

Good Coffee

DIXIE GRILL

Hot Dogs and Hamburgers

Air Port Grill

Drinks Sandwiches Candy

Curb Service

DAILY

12:00 ----- 12:00

FINE

HANDMADE FURNITURE

Authentic designs faithfully executed by master craftsmen in finest woods.

PERIOD REPRODUCTIONS

★

English and American

Modern

WAYAH INDUSTRIES

Franklin, N. C.

DEXTER WASHERS
FARMERS FEDERATION

666 GIVES Malarial Chills & Fever RELIEF
MALARIAL PREPARATION

ATHLETES FOOT GERM HOW TO KILL IT. IN ONE HOUR.

IF NOT PLEASED, your \$10 back. Ask any druggist for this STRONG fungicide, TE-OL. Made with 90 percent alcohol, it PENETRATES. Reaches and kills MORE germs faster. Today \$1

ANGEL'S DRUG STORE

JOIN Bryant Mutual Burial Association

Oldest and Strongest in the County

W. H. CARRINGTON

Registered Engineer
CIVIL & MINING SURVEYS
REPORTS, PLANS, DESIGN
Charleston, S. C. • Franklin, N. C.

Macon Dry Cleaners
Prompt Efficient Work
FOR PICK UP SERVICE
Phone 270

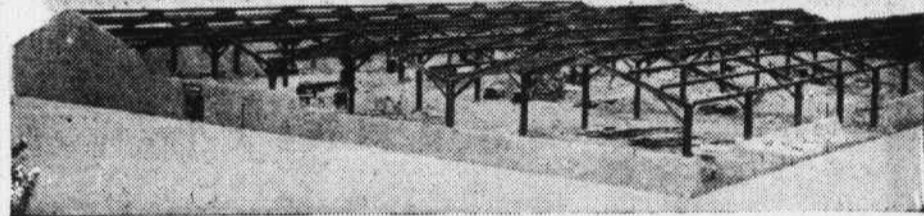
HOUNDS WANTED

WILL BE IN FRANKLIN AUGUST 20th, to buy Hounds. Want dogs that will tree. Also Rabbit Hounds. From 2 to 5 years old. Will pay highest price possible. Don't forget the Date--Friday August 20th.

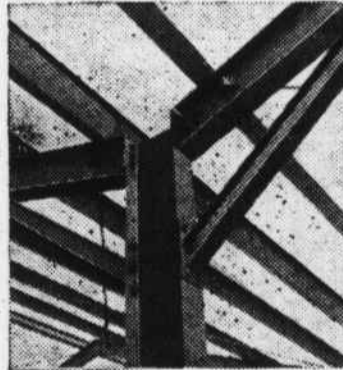
T. J. MURPHY, Buyer

HERE IS YOUR NEW PLANT

by Luria



Framework of Luria Building showing masonry side walls.



Detail of roof connections at column.

COMpletely erected of structural steel in one-half to one-third usual construction time.

Straight side walls . . . roofing and siding may be corrugated steel, corrugated asbestos or masonry walls and built-up roof. Meets all building codes.

Basic structure in clear span widths of 40' to 100' of unobstructed space and multiples of 20' in length. Easily air-conditioned or humidified.

Now available in stock for immediate delivery . . . subject to prior sale . . . complete 40 x 100 buildings.

Dave Steel Company . . . a great name in steel fabrication . . . offers its engineering facilities without obligation to help you plan and erect the proper structure for your specific needs.

Dave

STEEL COMPANY, INC.

ASHEVILLE, N. C.