

CONTROL LAND WASH AT START, URGES FULTON

Conservation Chairman Cites Practices That Help

The place to start controlling erosion is where the erosion begins, and fall and winter now is a good time to start, according to Robert Fulton, chairman of the Macon County Agricultural Conservation committee.

"Too often control measures are started after a lot of the damage has been done. We shouldn't have to wait until fields are cut up with gullies before we do something about trying to stop erosion on our farms."

If muddy water is running off the farm, erosion is taking place. The first step is to determine where it is coming from and then to determine what steps should be taken to keep the land from getting away. Hillsides planted to row crops and natural waterways plowed up and taken out of sod are often the starting points, Mr. Fulton suggested.

The Agricultural Conservation program was set up to help farmers meet these conservation problems wherever they are on the farm, the chairman said. Whatever the problem, whether erosion is just getting started or already at a serious stage, there are practices to meet the most serious problem in any farming area.

Farming on the contour helps in many instances on hilly or sloping land, he said. Where terraces are needed, grassed water way outlets should be provided so that the terrace doesn't become an erosion hazard instead of control.

In many cases, grass and clover sod crops are sometimes about the only means of keeping land from washing away. Sod crops in rotation help. But whatever the problem, the big thing is to catch erosion before it gets to the gully stage, Mr. Fulton urged farmers to check their conservation problems now with the county agricultural



DR. CHARLES H. BOLTON

Dr. Bolton, of the Riverside Baptist church, Miami, Fla., will be the guest minister at a series of revival services at the First Baptist church here. The revival will open Sunday, October 3, with services each evening at 7:30. Dr. Bolton's first service will be at 10:30 a. m. Tuesday, October 5, starting that date, morning services also will be conducted daily.

Ellijay

Mrs. Harry Morrison, of Gastonia, who recently received painful burns on her hands, face, and neck, when a jar of applesauce blew up in her hands, has recovered. The accident occurred at the home here of Mrs. William's mother, Mrs. Charlie Mincey, whom Mrs. Williams was visiting.

Fred Young, of Ellijay, who recently underwent a major operation at Angel hospital, has sufficiently recovered to be able to return to his work in the Ellijay Vercalite mines.

Mr. and Mrs. Richard Williams, of Greenville, S. C., recently visited Mrs. Williams' aunt, Mrs. Fred Buchanan, of Ellijay.

The Rev. Hobart Rogers, of Asheville, visited his parents, Mr. and Mrs. Charlie Rogers, of Ellijay, recently.

conservation committee, to take full advantage of the program for fall and winter practices.

G. I. Collegians Won't Get Paid Till November

Pointing out that most student-veterans won't get their first subsistence checks for the fall term until November, the Veterans administration has suggested that G. I. collegians have enough money to tide them over for a couple of months. The VA said veterans who complete their school registration after September 29 will receive their September and October subsistence allowances in one check early in November. The next checks will be delivered on or about December 1 to cover November allowances, and payments will be made monthly thereafter.

Mrs. Baughan Will Be Given Honor On Her 81st Birthday

A "woman of achievement" medal will be presented to Mrs. Phoebe Baughan at a picnic to be given by friends on the occasion of her 81st birthday Sunday, September 23.

The medal, given annually to some Southerner by Mrs. Lamar Lipscomb, of Miami and Lakemont, Ga., president of the Achievement club, will be presented by Col. Charles Metzer, of Florida and Dillard.

All friends and patients and former patients of Mrs. Baughan

Stiles Family's Annual Reunion Attended By 200

Approximately 200 relatives and friends attended the annual Stiles family reunion, held at the home of R. N. Stiles Franklin, Route 2, Sunday, September 12.

A picnic lunch was spread at noon, and a program of music followed, interspersed with brief talks.

Forester Of Argentina On Visit To Nantahala

R. L. Yussem, who is with the Argentine Forest Direction (corresponding to the U. S. Forest Service) arrived here last week for a study of forestry methods employed on the Nantahala National Forest. Mr. Yussem, who

are invited to attend the picnic, to be held at 2 p. m. in the grove near her trailer, just off highway 23, near Dillard.

will be here until September 24, is concluding a year's visit to the United States under student exchange plan.

BEER TAXES \$553,108
Beer taxes collected by the state during August totaled \$553,108, the State Department of Revenue reported this week.

There were no bank failures in the United States in the year 1945.

JOIN
Bryant Mutual
Burial Association
Oldest and Strongest
in the County

WE BUY . . .

OAK, POPLAR, MAPLE, ASH AND FINE LOGS

For prices apply at office or call 260-J
Highlands Briar, Inc.

Special Lunch

50c

CHOICE OF MEATS

Three Vegetables

Hot Rolls

Coffee

Desert

Dixie Grill

Hot Dogs and Hamburgers

To Grace Your Royal Table...



Princess Pet ICE CREAM

No party or banquet table ever held a more exquisite delicacy than PRINCESS PET ICE CREAM! It's so much richer...so much more delicious than any other Ice Cream you've ever tasted! It's made to a Queen's taste!

Vanilla, Chocolate, Strawberry, Buttered Pecan--any one of the PRINCESS PET ICE CREAM delectable flavors are simply out of this world! And, made only of daily fresh, rich, whole milk, daily fresh sweet cream and delicate natural flavorings... PRINCESS PET ICE CREAM is always the crowning feature of every occasion!

This month... ask for the flavor of the month

Princess Pet AMBROSIA

... full of luscious, tropical fruits. It's the food of the gods! Buy PRINCESS PET AMBROSIA, today -- 50¢ A Pint At Your Dealer's.

TASTE THE FRESH CREAM IN Princess Pet ICE CREAM

GET SIX BIG BIG BOTTLES

12 FULL GLASSES!

Regular 30¢ Value

ONLY 25¢ Plus Deposit, No Refund

SIX BIG, BIG 12-ounce bottles!

Whenever you shop, always take home six big, BIG 12-ounce bottles of Pepsi-Cola for the family! Twelve full glasses—plenty for all!

NO FINER COLA AT ANY PRICE!

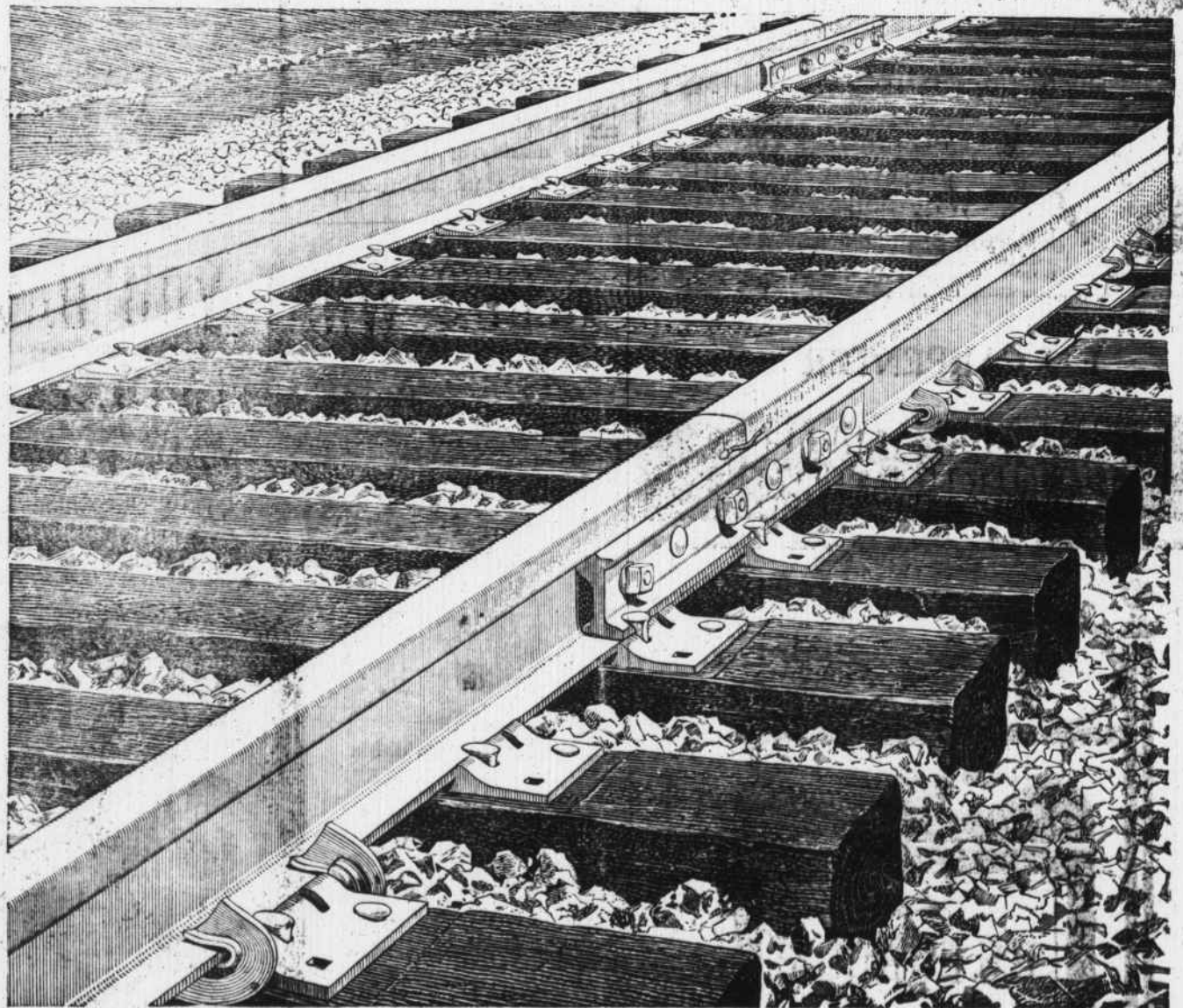
Bottled by: Pepsi-Cola Bottling Co. of Bryson City
Under appointment from Pepsi-Cola Company, N. Y.

JFG

SPECIAL COFFEE

"The Best Part Of The Meal"

RICH · SMOOTH · DELICIOUS



Ties that bind

They're more than just ties in Southern Railway track!

They're ties that bind neighbor to neighbor... friend to friend... ties that draw the family circle closer.

They're ties that bind the rich resources of the South's forests, fields and mines to the productive wheels of its industry... ties that bind its ever-growing output to great consuming and distributing centers

They're ties that bind community to community throughout the South... making it one of the fastest-growing industrial spots on earth... bringing greater opportunity and a brighter future to all its people.

Best of all, they're ties that bind us to you.

E. S. Morris
President

SOUTHERN RAILWAY SYSTEM

