

This Week's  
Specials  
at  
**BOWER'S**

Buy now and save!



Children's plaid dresses with-ruffled bottoms. Full cut, fast color, and sanforized. These are ideal for play and dress-up wear.

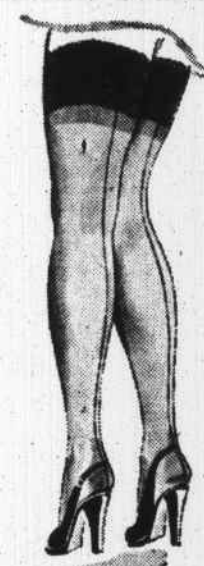
Sizes 3 to 6½  
**\$1.98**

**LADIES' SKIRTS**

A Real Bargain

Ladies' rayon wool gabardine skirts. Straight tail with darted waistline. These are in colors of brown, green, gray, and black. Buy these for work and dress.

Sizes 24 to 30  
**\$1.98**



**Ladies' Nylons**

Ladies' 51 gauge, 15 and 20 denier nylon hosiery in the newest of fall shades. They are in town smoke, deep dawn, autumn dusk, brown shadow, and smoke cloud.

Sizes 8½ to 10½  
**\$1.39**



**Ladies Anklets**

For All Occasions  
Ladies' anklets in white and pastel shades. These are fast color.

Sizes 8½ to 10½  
**15c to 35c**

**Children's Anklets**  
Sizes 3 to 8½  
**15c**

"Your Store"  
**BOWER'S**

**NEWS about PEOPLE**

Mr. and Mrs. C. E. Sarver, who have made their home in Franklin for the past year, are moving to Waynesville. They plan to leave for their next home Monday.

Mrs. E. Balzen Loch, of the Atlanta regional office of the U. S. Forest Service, was here last week assisting the Nantahala National Forest headquarters office here with personnel procedures.

Mrs. Gilmer L. Crawford spent last week-end in Asheville and Black Mountain, visiting her daughter, Miss Inez Crawford, and her sister, Mrs. R. H. Reese. Miss Crawford, who is a patient at the Western North Carolina Sanatorium, Black Mountain, is much improved, her mother said.

The Rev. A. Rufus Morgan, Mrs. H. E. Freas, and Miss Frances Barr left yesterday (Wednesday) for Rocky Mount to attend the wedding of Miss

Connis Thigpen, former Franklin resident, to Warren Linde, of Charlotte. Mr. Morgan is to be one of three clergymen officiating at the wedding which is set for tonight. Mrs. Freas plans to remain away for sometime, paying a visit to her son, Edward Freas, and his family at Walnut Cove.

Mrs. Grace O'Mohundro was in Atlanta this week on business.

Mrs. Reba Stanfield is reported recovering from an op-

eration performed October 5 in an Atlanta hospital.

George Hunnicutt an employe of Norton's Cafe underwent an operation for acute appendicitis Tuesday. His condition is satisfactory.

Mrs. A. Y. Crowley, of Griffin, Ga., is visiting her grandmother, Mrs. S. H. Lyle, Sr. Mrs. Crowley was the former Miss Dorothy Lyle.

Mrs. Lee Dills underwent a major operation at Angel Clinic Sunday. Condition satisfactory.

**MACON THEATRE**

Matinee 3:15 — Night 7:15 - 9:15

**LOVE** under water!  
**LOVE** under palm trees!  
**LOVE** under stars...

M-G-M's TECHNICOLOR MUSICAL PARADISE  
That's thrilling with romance!  
riotous with laughter!  
dazzling with dances!  
sparkling with music!

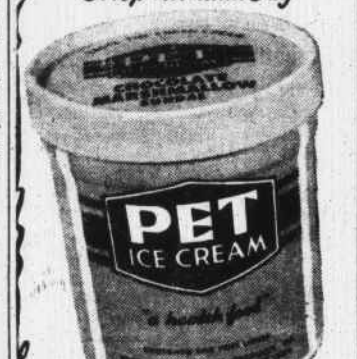
ESTHER WILLIAMS · LAWFORD  
RICARDO MONTALBAN · DURANTE  
CYD CHARISSE · CUGAT  
PETER JIMMY  
XAVIER  
And His Orchestra

**ON AN ISLAND WITH YOU**

Directed by RICHARD THORPE · Produced by JOE PASTERNAK  
A METRO-GOLDWYN-MAYER PICTURE

what's saving with this?

Pet's  
Feature Flavor  
of the Month  
**Chocolate Marshmallow Sundae**  
Refreshing as a  
Crisp Autumn Day



Pet Chocolate Ice Cream, with snowy cascades of Marshmallow Whip... that's Pet Chocolate Marshmallow Sundae--so smooth, so delicious... and as refreshing as a crisp autumn day! Every satisfying spoonful of Pet Ice Cream tells its own story of downright goodness!

**For Special Occasions**  
For regal hospitality, whenever you entertain... serve Princess Pet, the new de luxe Ice Cream in the Orchid Carton, stamped with the Crest of Quality. It's the richest, creamiest, most delicious Ice Cream you've ever tasted... made for those who want the very finest!



**All Pet Ice Creams**  
Both Pet and Princess Pet are made only of daily fresh whole milk, daily fresh sweet cream and delicate natural flavorings. That's why we say, compare any Pet Ice Cream with any other Ice Cream. You, too, will agree... as to flavor, body, texture and quality... PET Ice Creams top them all!  
So, for real Ice Cream enjoyment... whether you buy Princess Pet--the new, de luxe, richer, creamier Ice Cream--or popular Pet Ice Cream... you can't buy finer Ice Cream at any price! Take home a pint or two of each today!

**PET ICE CREAM**  
"a health food"  
Tastes the Fresh Cream  
in Pet Ice Creams

**National Forest Timber For Sale**

Sealed bids will be received by the Forest Supervisor, Franklin, North Carolina, up to and not later than 2:00 P. M., November 15, 1948, and opened immediately thereafter for all live timber marked or designated for cutting located on an area embracing about 1535 acres within the Big Buck Creek Unit, Cullasaja River watershed, Nantahala National Forest, Macon County, North Carolina, estimated to be 815 M feet B. M. more or less of hardwoods and softwoods. No bid of less than \$35.00 per M for black cherry; \$26.00 per M for yellow poplar; \$19.00 per M for ash and red maple; \$18.00 per M for birch, white oak and white pine; \$17.00 per M for northern red oak; \$16.00 per M for basswood and cucumber; \$13.00 per M for yellow pine; \$5.00 per M for chestnut oak and \$4.00 per M for hemlock, black oak, scarlet oak, buckeye, chestnut, black gum and beech will be considered.

In addition to prices bid for stumpage, a deposit of \$1.00 per M feet for all timber cut will be required for sale area betterment. \$2,000 must be deposited with each bid, to be applied on the purchase price, refunded or retained in part as liquidated damages, according to conditions of sale. The right to reject any and all bids is reserved. Before bids are submitted, full information concerning the timber, the conditions of sale and the submission of bids should be obtained from the Forest Supervisor, Franklin, North Carolina. O14 and O28--2tc



**Good Food, Well Prepared, and Courteous Service at CAGLE'S CAFE**

**"Hot Wave" DeLuxe CIRCULATING HEATER**  
60,000 BTU EASY TERMS **\$89.00**  
Oil burning. High heating efficiency plus low operating cost! Rich furniture styling, walnut finish. Simple dial control. KW1730

**Guaranteed, 100% Pure WEARWELL OIL**  
Worth \$2.00! **2-Gal. Can \$1.29** (Add Fed. Tax)  
25c a quart quality! Dependable lubrication at lowest cost. Refined from high quality crudes. Fine for "Oil Hogs" where economy is a "must." W1518-18 Available in Bulk Also

Comfortable, 32-Loop **SHEEP VEST**  
Bargain Priced At **\$2.35**  
Double stitched 8 oz. boat sail drill, brush brown. Sizes 38 to 47. GR2701-A

**Jeweled Bike REFLECTOR**  
Red or Amber **30c**  
2 1/2-inch dia. Clamp or bolt it on... either front or rear.

**Rubber-Link DOOR MAT**  
**\$2.85**  
Attractive, durable. Saves floors, rugs. 15 x 24-inch. K3625

**8 Pc. Socket WRENCH SET**  
**\$1.00**  
Carbon steel. Hex drive. 1/4" to 7/16" sockets. 4" handle.

**American Eagle SHOT SHELLS**  
All Sizes! Std. Load as low as \$1.70 Hi-Load as low as \$2.10 Famous for power, accurate patterns.

**Western Auto Associate Store**  
HOME OWNED and OPERATED by  
**Verlon Swafford**

**COLD WEATHER'S COMING!**  
GET YOUR SUPPLIES HERE  
Ready... get set... for Winter! Make things snug and shipshape and let the winds blow. Look over these things to select your needs.

**THIS WEEK'S FEATURE**  
**Felt Weatherstrip**  
Brown, hair felt strip that is easily tacked on door and window frames to seal out cold. 1/4-inch wide, 20-foot pkg. **4c ft.**

**DOOR BOTTOM**  
Waterproof, mothproof, chemically treated felt firmly attached to metal base. Indented nail or screw holes permit easy installation. 1-inch wide, 36-inches long... **75c**

**PIPE DAMPER**  
Cast iron plate, nickel plated open steel wire coil handle, always cool. Reversible spindle... **25c**

**STOVEBOARDS**  
Decorated tin plate metal over non-warping wood base. Protect your floors and rugs from heat, ashes or oil. (30 x 30) **\$3.00**

**DOUBLE BIT AXE**  
Michigan pattern, plain shape. One of the best axes made. Has highest quality steel blade--rust proof finish. Smooth hickory handle... **\$3.75**

**CAULKING COMPOUND**  
Superior quality compound for all caulking purposes around the home. We have black, gray or white. **5 Lb. Can \$2.75**

**ASH BASKET**  
Heavy steel galvanized construction with reinforced handle loops. The only safe place for ashes--buy several! Only **\$1.25**

**Single Blade Axe**  
A fine general purpose axe--drop forged steel head--polished and honed bit. Steel anchored 36" hickory handle. **\$2.75**

**FRANKLIN HARDWARE**  
Phones: 117, Store -- 187-R, Lumber Yard Franklin, N. C.