

State College Hints To Farm Homemakers

By RUTH CURRENT
State Home Demonstration Agent

Before remodeling old garments DO:
Rip—don't tear or cut an old garment apart. A few inches saved may mean much in re-making the garment.
Wash and press each piece before remaking.
Save all snaps, zippers, and buttons, to be used as needed.
Reverse material if possible, as it is likely to be less worn on the opposite side.
Do forget as much as you can how the old garment was made, to increase your pleasure in the new one.

The addition of a stick of cinnamon or a slice of lemon or orange gives a pleasant flavor to stewed prunes.
The addition of a thin slice of lemon with the rind to soup stock before clearing it will develop a delicious flavor in finished soup.

To produce a flavor that is refreshingly different, place a little applesauce and a few celery leaves on top of roast pork after it is well-browned, and let them cook with the roast.

If desired, slits may be made in the pork roast and pieces of raw apple and raw prunes inserted; this, too, produces an excellent and unusual flavor.

To extract onion juice, cut a slice from the bottom of the onion, invert over a lemon squeezer and twist. Thus it is possible to secure any desired quantity of onion juice.

State College Answers Timely Farm Questions

Q. Are there any disadvantages to artificial breeding of dairy cattle?
A. There are none which cannot be overcome by properly operated breeding associations, according to extension dairy specialists at State college. Don't expect artificial breeding to settle cows on which the bull has failed. The program is not a cure for shy breeders or cows with diseased reproductive organs.
Q. Are all proved bulls good sires?
A. By no means. Records of the U. S. Department of Agriculture for many years show that of the hundreds of bulls proved in dairy herd improvement associations less than 50 per cent increase production in their daughters as compared

Paid-up Life Insurance Is 14 Billions

Nearly one-tenth of all the ordinary and industrial life insurance in force in all U. S. companies is fully paid-up protection, with no more premiums to pay, the Institute of Life Insurance reports.
The total of paid-up life insurance at the start of the year was \$14,640,000,000 and it included 22,000,000 policies.
These paid-up units included policy additions paid for by dividends; limited payment policies on which all premiums have been paid; single premium policies; and paid-up or extended insurance set up by policy cash values when policies were terminated.

with the daughters' dams. Therefore, about half of the bulls that have been and are now still in general use are lowering rather than increasing milk production.
Q. What is a desirable proved sire?
A. A bull whose daughter's records, when compared with

Our Great America by Mack

THE STATE OF WASHINGTON WAS NAMED FOR GEORGE WASHINGTON AND IS THE ONLY STATE NAMED AFTER A PRESIDENT. IT WAS ONCE PART OF OREGON TERRITORY.

TURPENTINE AND ROSIN COME FROM THE PINES WHICH GROW IN THE SOUTH. THIS IS CALLED THE NAVAL STORES INDUSTRY BECAUSE ORIGINALLY THE PITCH AND TAR WAS USED IN THE BUILDING OF SHIPS. GEORGIA TODAY LEADS THE U.S. IN PRODUCTION OF NAVAL STORES.

THE UNITED STATES LEADS THE WORLD IN PRODUCTION OF RAYON FROM WOOD

their dams, indicate he can transmit a high level of production. Such bulls are very scarce; only through artificial insemination can their ability be fully utilized. It is possible by artificial breeding to get 1,000 or more calves from one bull in a year as compared with about 50 by natural breeding.

Q. How does the conception rate in artificial breeding compare with natural service?
A. Careful records kept on a large number of cows show it to be just as sure as the bull. On an average it takes 1.5 services to settle a cow.

Regular Dinner Steaks Fried Chicken For a Tempting Meal, Try Ours

We bake our own pies, which are delicious. Try Them.
DRYMAN'S CAFE
YOUR BUSINESS ALWAYS APPRECIATED

Gneiss
Mr. and Mrs. Henry Peek, of Ellijay, have returned home after visiting relatives at Pine Grove.
Wendel Keener, ex-marine, is building a new home on Walnut Creek. It is situated on the site of the old home of the late J. M. Keener.
Samuel M. Mashburn is one of the crew of the U. S. S. Leyte which recently left Quonset Point, R. I., for a 24-day cruise to Newfoundland. He is the son of Mrs. F. E. Mashburn.

EXTRA PROTECTION for your car GENUINE FORD UNDERCOATING for yourself

FOR PROTECTION FOR COMFORT

It provides a tough coating for all underbody units. Is impervious to road salts, acids and alkalis. Resists abrasion from gravel, stones and cinders.

It penetrates seams and corners to help seal your car against drafts, dust and fumes. Makes car quieter by reducing all road and engine noises.

DUNCAN MOTOR CO.
FRANKLIN, N. C.

"SPEEDY" BURRELL MOTOR CO. INC.

HOLLY SMOKE, SPEEDY! LOOK AT THE BRAND NEW MODEL CAR THAT COMPANY'S PUTTIN' OUT!

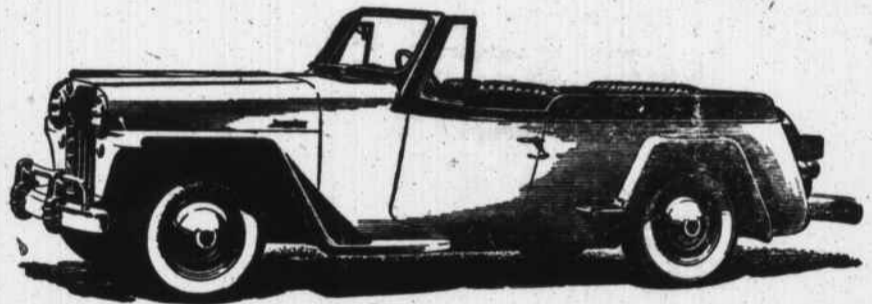
WHY IT'S EXACTLY THE SAME STYLE THEY PUT OUT TEN YEARS AGO.

DON'T BELIEVE EVERYTHING YOU SEE, GENTLEMEN

I SIMPLY TOOK THIS OLD BUS OVER TO BURRELL MOTOR CO. INC. AND HAD THEM GIVE IT ONE OF THEIR SPECIAL PAINT JOBS. THEY JUST MADE IT LOOK LIKE NEW.

CHEVROLET BURRELL MOTOR CO., INC. CHEVROLET
Sales and Service
TELEPHONE: 123 24 HOUR WRECKER SERVICE — FRANKLIN, N. C.

THE NEW JEEPSTER is Willys-Overland's latest—a distinctive sports phaeton with fleet performance that makes each trip a driving thrill. The Jeepster weighs less than any other standard-size car . . . rolls up record-breaking gas mileage . . . rides with road-hugging smoothness.



WILLYS-OVERLAND BLAZES THE TRAIL WITH SEVEN PIONEERING CARS AND TRUCKS



THE 'JEEP' STATION SEDAN is a perfect family car, with the luxury and comfort of a sedan plus the spaciousness of its all-steel station-wagon body.

The first station wagon with all-steel body and top—the 'Jeep' Station Wagon—showed the way to wider practical usefulness and greater safety.

The 4-wheel-drive 'Jeep' Truck is the first volume-produced vehicle of its kind—designed for off-road duty, for tough grades and bad roads.

The Universal 'Jeep' is the first all-purpose farm vehicle built for use both in tractor work and for hauling or towing at highway speeds.

The new Jeepster is America's lowest-weight standard-size car—distinctive in appearance, far ahead in economy.

The 'Jeep' Station Sedan is an entirely new type of car, combining sedan comfort with station-wagon spaciousness.

This pioneering by Willys-Overland—fitting cars and trucks to actual needs—has brought world-wide success to these more useful, more economical vehicles. We invite you to see how fully Willys-Overland's postwar products meet your transportation and hauling needs.



THE 'JEEP' STATION WAGON, with all-steel body and top, is dual-purpose—a smooth-riding passenger car and a practical vehicle for hauling.



THE UNIVERSAL 'JEEP' is America's most versatile vehicle for farm and industry, serving as tractor, mobile power unit and for hauling.



THE 'JEEP' PANEL DELIVERY offers smart appearance together with low operating costs, thanks to low weight and the 'Jeep' Engine.

'JEEP' TRUCKS both 2- and 4-wheel drive, cut hauling costs through long service and low operating and maintenance costs.

4-WHEEL-DRIVE 'JEEP' TRUCKS outperform conventional trucks on cross-country hauling, extreme grades, through mud, sand and snow.



MACON WILLYS COMPANY

Parker Norton and Clyde Sanders, Owners

PHONE 233

How To Relieve Bronchitis

Creomulsion relieves promptly because it goes right to the seat of the trouble to help loosen and expel germ laden phlegm and aid nature to soothe and heal raw, tender, inflamed bronchial mucous membranes. Tell your druggist to sell you a bottle of Creomulsion with the understanding you must like the way it quickly allays the cough or you are to have your money back.
CREOMULSION
for Coughs, Chest Colds, Bronchitis

3 TO 8 MINUTE WASHING ACTION



FIVE YEAR GUARANTEE
MACON COUNTY SUPPLY CO.
Franklin, N. C.