

Baptist

CARTOOGECCHAYE
Rev. W. A. Clee, Pastor
Sunday School 10 a. m.
Worship
11 a. m. 2nd and 4th Sundays
8 p. m. 2nd and 4th Sundays
Training Union 7 p. m.

COWEE
Rev. M. T. Gales, Pastor
Sunday School 10 a. m.
Morning Worship 11 a. m.
Training Union 7:15 p. m.
Evening Service 8:15 p. m.
Wednesday—
Prayer Meeting 8 p. m.

FIRST—Franklin
Rev. M. W. Chapman, Pastor
Sunday School 9:45 a. m.
Morning Worship 11 a. m.
Training Union 7 p. m.
Evening Services 8 p. m.
Wednesday—
Prayer Meeting 8 p. m.
HIGDONVILLE
Rev. Jarvis Underwood, Pastor
Sunday School, 9:45 a. m.
Worship:
11 a. m. 1st and 3rd Sundays
8 p. m. 2nd and 4th Sundays
Training Union, 7 p. m. Sunday
Prayer Meeting, 7:30 p. m. Wednesday

HOLLY SPRINGS
Rev. Arvil Swafford, Pastor
Sunday School 10 a. m.
Worship 11 a. m.
Training Union 7 p. m.
Worship 8 p. m.
Prayer Meeting
7:30 p. m. Thursdays

IOTLA
Rev. Edward G. Altland, Pastor
Route 3, Franklin, N. C.
Sunday School 10 a. m.
Worship Service 11 a. m.
Training Union 7 p. m.
Worship Service 8 p. m.

LONGVIEW—Georgia Road
Rev. C. T. Taylor, Pastor
Sunday School 10 a. m.
Training Union 7 p. m.
Morning Worship 11 a. m.
1st and 3rd Sundays
Evening Worship 8 p. m.
2nd and 4th Sundays
Wednesday—
Prayer Meeting 7:30 p. m.

MOUNT HOPE
Rev. M. C. Wyatt, Pastor
Sunday School 10 a. m.
Morning Worship 11 a. m.
Training Union 7 p. m.
Evening Worship 8 p. m.
Prayer Meeting
7:30 p. m. Wednesday

FINE GROVE
Eldon Owens, Pastor
Sunday School 10 a. m.
Preaching 11 a. m.
RIDGECREST
Rev. W. K. Shields, Pastor
Sunday School 10 a. m.
Worship 11 a. m. 2nd and 4th
Sundays
Training Union 7:30 p. m.
Wednesday—Bible Study 8 p. m.

SUGARFORK
Rev. C. T. Taylor, Pastor
Sunday School 10 a. m.
Morning Worship 11 a. m.
2nd and 4th Sundays
Evening Worship 8 p. m.
1st and 3rd Sundays
Training Union 7 p. m.
Thursday—
Prayer Meeting 7:30 p. m.

Catholic

ST. FRANCIS—Franklin
Morning Worship 10 a. m.

Church of Christ

FRANKLIN
Bruce R. Card, Minister
Bible Study 10 a. m.
Worship 11 a. m.
Prayer Meeting 7:30 p. m.

Episcopal

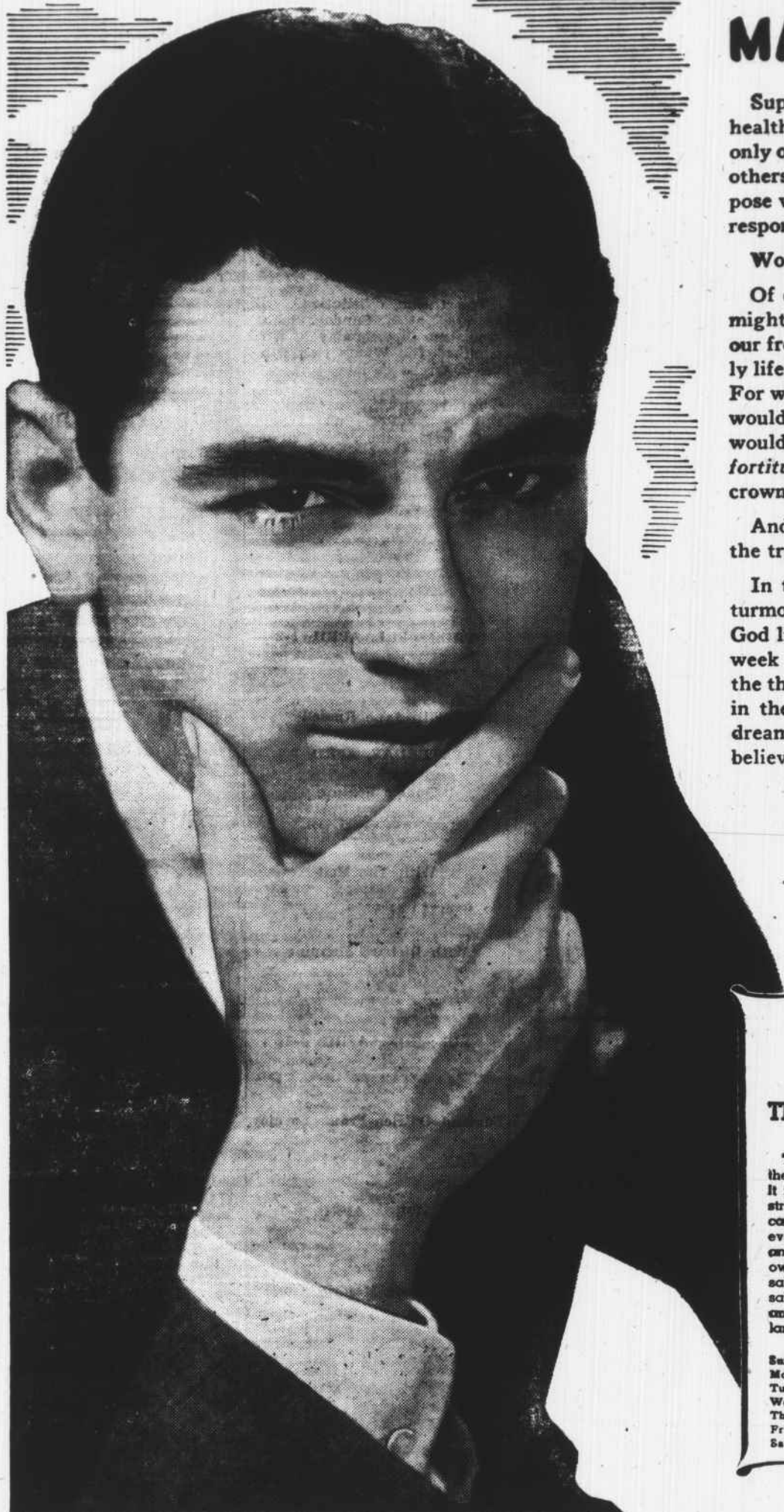
ST. AGNES—Franklin
Rev. A. Rufus Morgan, Pastor
Holy Communion 11 a. m.
1st Sunday
Morning Prayer 11 a. m.
3rd Sunday
Evening Service 5:30 p. m.
2, 4, 5, Sundays
Church School 10 a. m.
Every Sunday
Adult Bible Class 10 a. m.
ST. CYPRIAN—Franklin
Rev. A. Rufus Morgan, Pastor
Holy Communion 9 a. m.
3rd Sunday
Evening Prayer 2 p. m.
1st, 2nd, 4th and 5th Sundays
Church School 1 p. m.
Every Sunday
INCARNATION—Highlands
Rev. A. Rufus Morgan, Pastor
11 a. m. 2nd and 4th Sundays
7:30 p. m. 1st and 3rd Sundays

Assembly of God

CHILLASAJA
Rev. W. C. Jolley, Pastor
Sunday School 10 a. m.
Worship 11 a. m.
C. A. Service 6:30 p. m.
Evangelistic Service 7:30 p. m.
Prayer Meeting — Wednesday
7:30 p. m.

MT. SINAI
Rev. Fred N. Sorrells, Pastor
Rev. Conrad Barrett,
Assistant Pastor
Sunday School 10 a. m.
Morning Worship 11 a. m.
Evangelistic Service 7:30 p. m.
Wednesday—
Prayer Meeting 7:30 p. m.
Saturday—
Evangelistic Service 7:30 p. m.

Services Of Macon County Churches



IN THE LAND OF MAKE-BELIEVE

Suppose we were all wealthy... and all healthy. And suppose we had to work only one day a week, and could devote the others to recreation and rest. And suppose we had no worries, no problems, no responsibilities.

Would we all be happy... really happy?

Of course not! For a week or two we might revel in our good fortune, and enjoy our freedom from care. And then suddenly life would become colorless and empty. For where would we find *incentive*? How would we recapture *ambition*? What would we substitute for *perseverance* and *fortitude* and *hope*: the qualities that crown existence with achievements?

And what would happen to **FAITH**—the true foundation of happiness?

In this work-a-day world, with all its turmoil and care, the man who depends on God lives with a smile in his heart. And week after week his shoes wear smooth the threshold of his Church as he rejoices in the love of His Saviour. He doesn't dream of happiness in a land of make-believe! He has found happiness.



THE CHURCH FOR ALL... ALL FOR THE CHURCH

The Church is the greatest factor on earth for the building of character and good citizenship. It is a storehouse of spiritual values. Without a strong Church, neither democracy nor civilization can survive. There are four sound reasons why every person should attend services regularly and support the Church. They are: (1) For his own sake. (2) For his children's sake. (3) For the sake of his community and nation. (4) For the sake of the Church itself, which needs his moral and material support. Plan to go to church regularly and read your Bible daily.

	Book	Chapter	Verses
Sunday.....	Psalms	42	1-11
Monday.....	Psalms	145	1-21
Tuesday.....	Ecclesiastes	12	1-13
Wednesday.....	Isaiah	6	1-8
Thursday.....	John	5	39-47
Friday.....	Galatians	5	13-26
Saturday.....	II Timothy	2	11-19

This Series of Weekly Advertisements in The Franklin Press is Sponsored by the
Following Individuals and Business Establishments:

Reeves Hardware Co.
Nantahala Creamery
The Bank of Franklin
Franklin Hardware Co.
Bryant Furniture Co.
Baldwin Market
Cagle's Cafe
Carolina Pharmacy
Brown and Carson
Downs and Dowdle
Farm & Home Supply Co.
Nantahala Oil Co.
S & L 5 and 10c Store

Macon Insurance Agency
Lake V. Shope
Macon Construction Co.
Franklin Frozen Foods
Highlands Cleaners & Laundry
J. C. Sorrells Motor Co.
Burrell Motor Co.
Conley Motor Co.
Mason's Grocery
City Market
Enloe Tractor and Equipment Co.
Quality Shop

Farmers Federation
Lee Poindexter
Perry's Drug Store
Macon Willys Co.
Western Auto Asso. Store
Horsley's Restaurant
Sossamon Furniture Co.
Belk's Dept. Store
Macon Motor Co.
Jamison, Jewelers
Twins' Shop
Franklin 5 & 10c Store
Macon County Supply Co.

Church of God
CARTOOGECCHAYE
Rev. Homer Pope, pastor
Sunday School, 10 a. m.
Worship, 11 a. m.
Y. P. E. 7:30 p. m. Sat. night
Worship, 8 p. m.
Prayer Meeting, Thursday 7 p. m.
PRENTISS
Rev. Vernon Wood, Pastor

Sunday School 10 a. m.
Morning Worship 11 a. m.
Evening Service 7:30 p. m.
Y. P. E.—Saturday 7:30 p. m.
Prayer Meeting — Wednesday
7:30 p. m.
SCALY
Rev. J. C. Quilliams, Pastor
Sunday School 10 a. m.
Morning Worship 11 a. m.

Y. P. E. 7:30 p. m.
Evening Worship 8 p. m.
Prayer Service and Bible Study
Wednesday 8 p. m.
Methodist
ASBURY
Rev. R. L. Poindexter, Pastor
Sunday School 10 a. m.
Worship

11 a. m. 3rd Sunday
8 p. m. 1st Sunday
BETHEL
Rev. Joseph Houser, Pastor
Worship
11 a. m. 1st Sunday
10 a. m. 3rd and 4th Sundays
Sunday School
10 a. m. 1st and 2nd Sundays
11 a. m. 3rd and 4th Sundays

CARSON CHAPEL

Rev. C. E. Murray, Pastor
Sunday School:
10 a. m. 2nd and 4th Sundays
11 a. m. 1st and 3rd Sundays
Morning Worship:
10 a. m. 1st and 3rd Sundays
M. Y. F., 7 p. m. Sunday.

CLARK'S CHAPEL

Rev. Joseph Houser, Pastor
Sunday School
11 a. m. 1st Sunday,
Worship
10 a. m. 1st Sunday
11 a. m. 2nd and 3rd Sundays

DRYMAN'S CHAPEL

Rev. R. L. Poindexter, Pastor
Sunday School 10 a. m.
Worship
3 p. m. 2nd Sunday
8 p. m. 4th Sunday

FIRST—Franklin

Rev. C. E. Murray, Pastor
Sunday School, 10 a. m.
Morning Service 11 a. m.
Junior Intermediate Fellowship,
7 p. m.

M. Y. F., 7 p. m.
Bible and Prayer Hour, 8 p. m.

HICKORY KNOLL

Rev. R. L. Poindexter, Pastor
Sunday School 10 a. m.
Worship
8 p. m. 2nd Sunday
10 a. m. 4th Sunday

HIGHLANDS

Rev. Robert E. Early, Pastor
The Church School 10 a. m.
Morning Worship 11 a. m.
Methodist Youth Fellowship 8
p. m.

IOTLA

Rev. Albert F. Gordon, Pastor
Sunday School 10 a. m.
Worship
11 a. m. 1st and 3rd Sundays
7:30 p. m. 2nd and 4th Sundays

LOUISA CHAPEL

Rev. Joseph Houser, Pastor
Sunday School
10 a. m. 3rd and 4th Sundays
11 a. m. 2nd Sunday
Worship
10 a. m. 2nd Sunday
11 a. m. 4th Sunday

MAIDEN'S CHAPEL

Preaching
1st and 3rd Sundays 10 a. m.
Sunday School
1st and 3rd 11 a. m.
2nd and 4th 10 a. m.
M.Y.F. 7:30 p. m.

MT. ZION—Franklin, Rt. 1

Rev. F. D. Freeman, Pastor
Morning Worship 11 a. m.
2nd and 4th Sundays

MULBERRY

Rev. R. L. Poindexter, Pastor
Sunday School 10 a. m.
Worship
11 a. m. 4th Sunday
3 p. m. 1st Sunday

PATTON'S CHAPEL

Rev. R. L. Poindexter, Pastor
Sunday School 10 a. m.
Worship 11 a. m. 2nd Sunday

SALEM

Rev. Joseph Houser, Pastor
Sunday School 2:30 p. m.
Worship
3 p. m. 1st and 3rd Sundays

SNOW HILL

Rev. Albert F. Gordon, Pastor
Sunday School 10 a. m.
Worship
11 a. m. 2nd and 4th Sundays
7:30 p. m. 1st and 3rd Sundays

RIVERVIEW

Rev. Albert F. Gordon, Pastor
Worship
2:30 p. m. 2nd and 4th Sundays

SCALY

Rev. R. L. Poindexter, Pastor
Worship 3 p. m. 3rd Sunday

UNION

Rev. R. L. Poindexter, Pastor
Sunday School 10 a. m.
Worship
11 a. m. 1st Sunday
8 p. m. 3rd Sunday

Non-Denominational

SLOAN'S CHAPEL—E. Franklin
Sunday School 2 p. m.
Worship 3 p. m. 2nd, 3rd, 4th
Sundays
Prayer Meeting—Tuesday 7:30
p. m.

Presbyterian

FRANKLIN
Rev. Bryan Hatchett, Pastor
Sunday School 10 a. m.
Morning Worship 11 a. m.
Evening Service 8 p. m.
Youth Fellowship 7 p. m.
Wednesday—
Prayer Meeting 7:30 p. m.
MORRISON
Rev. Bryan Hatchett, Pastor
Preaching 1st and 3rd Sundays,
9:45
Sunday School 10:45
Sunday School 2nd and 4th
Sundays, 9:45
FIRST—HIGHLANDS
Rev. Robert M. Hart, Pastor
Sunday School 10 a. m.
Worship 11 a. m.
Youth Fellowship 7:30 p. m.

Wesleyan Methodist

BUCK CREEK
Rev. Sam Hanvey, Pastor
Morning Worship 10 a. m.
Sunday School, 10 a. m.
Morning Worship, 11 a. m.
First and Third Sundays