

Zickgraf HARDWOOD COMPANY, Inc.

Phone 134 + FRANKLIN, NORTH CAROLINA

"LET'S TALK LUMBER"
Now Buying Fifteen Species
And
Paying Top Prices

Call, Write or Come by Our Office for Current Lists on
Prices and Specifications
WE UNLOAD WITH LIFT FORK



Sunnyfield Crisp Fresh
CORN FLAKES
12-oz. Pkg. **17c** 18-oz. Pkg. **23c**

An A&P Exclusive
NUTLEY MARGARINE 2 1-lb. Pkgs. 39c

Southland Sliced
Strawberries 2 10-oz. Pkgs. 45c

Aunt Jemima Regular or
Quick Grits 5 Lb. Bag 25c

Hearty and Vigorous Our Own
TEA BAGS 5 Off Label Deal Price You Pay 48 ct. Pkg. 43c

Jane Parker — Golden Jane Parker — Enriched
Loaf Cake White Bread
EACH **25c** Full Pound Loaf **14c**

Ann Page — Crabapple — Elderberry or
Grape Jelly 12-oz. Glass 19c

Coffee with Chicory
CRESCENT CITY 1-lb. Bag 59c

"Our Finest Quality" Small
A & P GREEN PEAS No. 303 16-oz. Can 21c

"Our Finest Quality" All Green
A & P Asparagus No. 300 Can 35c

Large Head Celo Bags
LETTUCE . . 2 for 25c CARROTS . . 2 for 15c

Fresh New Green
TOMATOES . . lb. 19c CABBAGE . . lb. 5c

Large Size Large
CELERY . . bunch 12c CANTALOUPE . ea. 33c

WOMAN'S DAY Issue Copy May

7c **A&P Super Markets**
These Prices Effective thro Apr. 28

**Board Classes
30 Registrants**

Thirty registrants have been classified by the local draft board. By classes they are:
1-A (available for military service): Grover W. Shuler.
1-A-O (conscientious objector, available for non-combatant service only): Conrad O. Barrett.
1-C (enlisted): Emory Lewis Scruggs, Grady J. Greene, Clinton E. Bowers, Charles R. Prince, James G. Wood, and William Chavis.
2-A (deferred because of civilian employment, except agriculture): Dillard O. Passmore and Boyd E. McGaha.
4-A (registrant who has completed service and or sole surviving son of family in which sons or daughters were killed in action or in the line of duty): Jackson T. Roper, Leon H. Talley, Morris W. Wilson, Charles E. Sanders, James F. Stewart, James R. Angel, Clifton E. Sanders, Clyde F. Bates, Richard D. Miller, Vernon R. Wilson, Claude Fouts, Weyman N. Waldrop, Jimmie E. Stanfield, and Leonard C. Vinson.
4-F (physically, mentally, or morally unfit for duty): Virgil R. Gibson and Charles I. Pickens.
5-A (over the age of liability): Francis S. Leopard, Paul J. Jennings, Earl G. Roper, and James W. Stewart.

James E. Moore Ends Recruit Training At Navy Center April 21

James E. Moore, son of Mr. and Mrs. Windle W. Moore, of Franklin, Route 5, was scheduled to be graduated from recruit training April 21 at the U. S. Naval Training Center at Great Lakes, Ill., according to the Fleet Home Town News Center. Following a two-week leave he will be assigned to shipboard duties or a service school, the announcement said.

Legal Advertising

EXECUTOR'S NOTICE
Having qualified as executors of J. H. Enloe Estate, deceased, late of Macon County, N. C., this is to notify all persons having claims against the estate of said deceased to exhibit them to the undersigned on or before the 3 day of April, 1957, or this notice will be plead in bar of their recovery. All persons indebted to said estate will please make immediate settlement.
This 3 day of April, 1956.
Harold Enloe & Jeff Enloe, Jr.
Executors

A26-6tp-M31

Report of Condition of
THE BANK OF FRANKLIN
of Franklin, in the State of North Carolina, at the Close of
Business on April 10, 1956

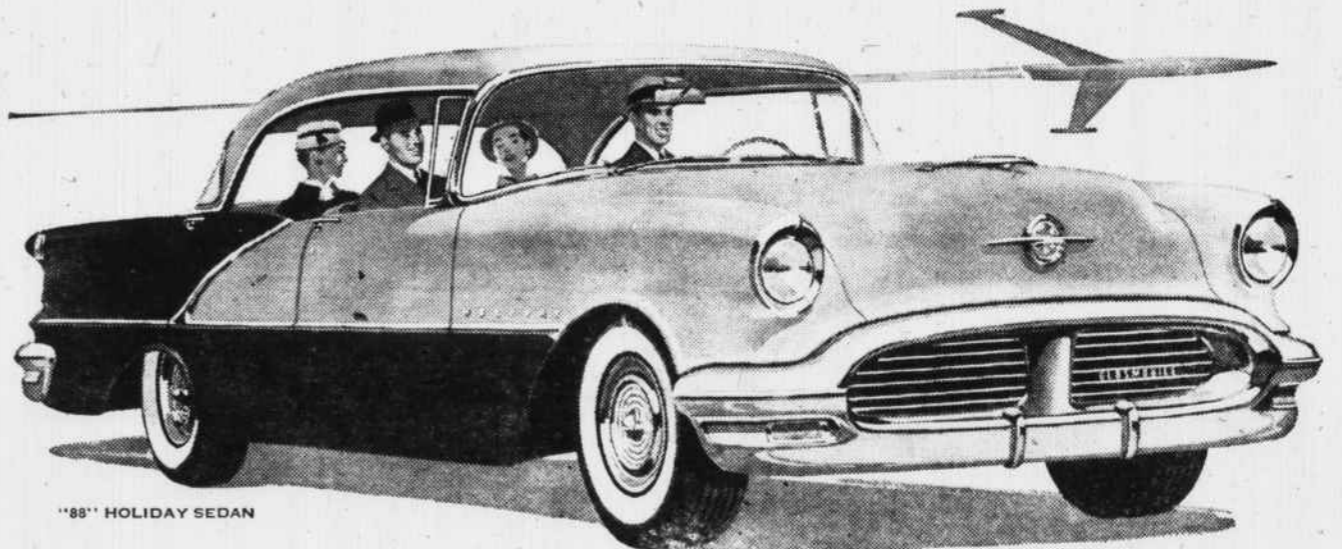
Assets	
1. Cash, balances with other banks, including reserve balances, and cash items in process of collection.....	\$432,650.31
2. United States Government obligations, direct and guaranteed.....	1,057,500.00
3. Obligations of States and political subdivisions.....	96,222.20
6. Loans and discounts (including \$ none overdrafts).....	816,432.49
7. Bank premises owned \$10,515.44, furniture and fixtures \$6,537.85 (Bank premises owned are subject to \$ none liens not assumed by bank)	17,053.09
11. Other assets	8,205.01
12. TOTAL ASSETS	\$2,428,063.10
Liabilities	
13. Demand deposits of individuals, partnerships, and corporations.....	1,523,645.75
14. Time deposits of individuals, partnerships, and corporations.....	483,726.14
15. Deposits of United States Government (including postal savings).....	83,156.34
16. Deposits of States and political subdivisions.....	68,243.58
18. Other deposits (certified and officers' checks, etc.).....	11,133.79
19. TOTAL DEPOSITS	\$2,169,905.80
23. Other liabilities	31,810.93
24. TOTAL LIABILITIES (not including subordinated obligations shown below).....	\$2,201,716.53
Capital Accounts	
25. Capital*	\$75,000.00
26. Surplus	75,000.00
27. Undivided profits	74,346.57
28. Reserves	2,000.00
29. TOTAL CAPITAL ACCOUNTS	\$226,346.57
30. TOTAL LIABILITIES AND CAPITAL ACCOUNTS.....	\$2,428,063.10
*This bank's capital consists of: Common stock with total par value of \$75,000.00 Total deposits to the credit of the State of North Carolina or any official thereof	
	\$29,807.63

Memoranda
31. Assets pledged or assigned to secure liabilities and for other purposes

I, H. W. Cabe, Cashier, of the above-named bank, do solemnly swear/affirm that the above statement is true, and that it fully and correctly represents the true state of the several matters herein contained and set forth, to the best of my knowledge and belief.

Correct—Attest: H. W. CABE, Cashier
FRANK B. DUNCAN,
W. E. BALDWIN
VERLON SWAFFORD,
Directors.
State of North Carolina,
County of Macon, ss:
Sworn to and subscribed before me this 20th/day of April, 1956, and I hereby certify that I am not an officer or director of this bank.
My commission expires December 22, 1957.
CECILE GIBSON, Notary Public

**IT'S TORQUE THAT
MAKES THE WHEELS GO 'ROUND!**



... And the High-Torque Output of Oldsmobile's Famous Rocket Engine Is Instantly Translated into Outstanding Performance at the Rear Wheels!

LET'S TALK TORQUE! In plain language, torque is "twist." It's the force that makes the wheels go 'round.

So it follows . . . the more torque your engine has, the more go power your car has . . . the more getaway at the light . . . the more action on the open road!

That's why, when it comes to power, there's nothing like Oldsmobile's Rocket T-350 Engine — because the Rocket is torque TNT! Figures prove it: 350 pound-feet at 2800 rpm (340 pound-feet at 2400 rpm in '88 models).

OLDSMOBILE CHASSIS IS ENGINEERED TO HANDLE HIGHER TORQUE!

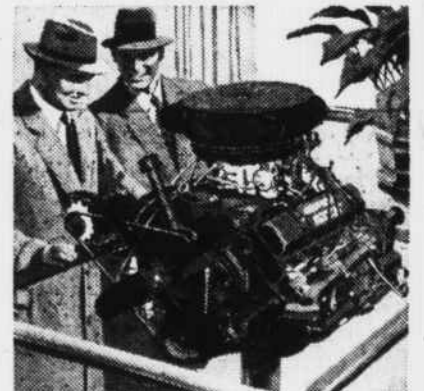
Oldsmobile has the chassis to take Rocket torque . . . a skillfully engineered Oldsmobile chassis with an extra-sturdy, dynamically balanced drive shaft, and an extra-rigid frame that resists twisting and weaving.

What's more, the Rocket's got horsepower — to spare! And with Oldsmobile, it's high usable horsepower . . . a by-product of engine design aimed straight at the wheels — design that translates horsepower into terrific torque at normal engine rpm's.

TOP TORQUE MEANS TIP-TOP PERFORMANCE!

The result is higher torque — silken, responsive Rocket action. Touch the accelerator — ever so gently — you "go" . . . and we do mean "GO"! You thrill to smoother, swifter bursts of power for everyday use — spectacular performance, when you need it . . . when you want it.

Any way you look at it, you can't top the Rocket for thrills for the money — or for top return when it's time to trade. Stop by soon. Rocket 'round the block . . . or around the town if you like!



OLDSMOBILE'S ROCKET—the engine that started the high-compression era—still leads the field! Get the feel of top torque, top horsepower! Take a Rocket Ride today!

OLDSMOBILE

A QUALITY PRODUCT brought to you by AN OLDSMOBILE QUALITY DEALER!

BURRELL MOTOR COMPANY, Inc.

PHONE 123

Dealer 3014

FRANKLIN, N. C.

GET OUT OF THE ORDINARY . . . INTO AN OLDS! GET TOP VALUE TODAY . . . TOP RESALE TOMORROW!