

Hints To HOMEMAKERS

By MISS RUTH CURRENT
State Home Demonstration Agent

IRONING EASIER—Be nice to your iron. A bright shiny soleplate is important for easier ironing and good results. To rid the soleplate of stains and caked starch, try either of these two methods:

(1) Heat iron slightly; then glide back and forth over a piece of household waxed paper. (2) Make sure iron is cool, then wipe soleplate with a cloth wrung out in soapy water.

A scratched and rough soleplate can be avoided if you're careful not to iron over buttons, zippers, hooks, etc.

Don't tug 'on cord. Disconnect iron by pulling out plug.

Don't wrap cord tightly around iron before storing. Wrap loosely to avoid short circuits by scorching or burning the cord. Keep the cord away from the heated soleplate of the iron.

Don't plug iron into extension cords. Minimize fire hazards by plugging it into a wall socket.

INTERESTED?—The ugly white oilcloth of yesterday has grown into a bright practical table covering that suits today's living to a "T". Using themes from out-

of-doors, Pennsylvania Dutch motifs, and fruit designs, an artist has given this old product a new look; one you will enjoy using for informal indoors or outside. The new oilcloth, available in hardware, department, and dime stores, comes in 46-inch and 54-inch widths in several color combinations.

STRETCHING—Cheese and milk are standbys: 1 pint milk in cream sauce, plus 7-ounce can of tuna fish, makes 4 servings.

Four one-ounce slices of cheese plus one-half pound hamburger makes 4 cheeseburgers.

Use cheese and milk elsewhere in the meal. A favorite is cheese with apple pie, or milk in puddings and custards. Baked or boiled custard stores well in refrigerator for several days.

Cheese fits into every part of a meal—as a tangy appetizer, the main dish, in vegetable sauces, salads or as dessert.

BE INGENIOUS—Bits of cooked fish, chicken, meat, or cheese can be added to tossed salad, combined in a casserole or omelet.

Stale cake and cookies can be crumbled and served with ice cream or in puddings. A slice of soft bread in a jar of hardened cookies will soften them.

By using fats from cooking meat or poultry. For instance, chicken fat can be used in biscuits and cookies, beef fat in browning onions for casseroles or spaghetti sauce, ham fat in frying eggs, seasoning beans or cabbage.

USE LIST—Make and use shopping list to cut costs and to buy wisely. Enter foods you plan to buy opposite the groups they belong in. Don't buy on the spur of the moment just because of displays, but fit "specials" into your list as you shop. Watch advertisements; stock up on good buys. Watch lists of "plentiful" in the newspapers, and keep these in mind when you make your shopping list.

Dalton Reenlists Under Command's 'Tree Of Peace'

Airman 1/c Franklin D. Dalton has reenlisted under the Strategic Air Command's "Tree of Peace" enlistment campaign, it has been announced from Fairchild Air Force Base in Washington.

Son of Mr. and Mrs. Grady Dalton, of this county, he is a member of the 92nd Installation Squadron.

Korean GIs Getting Checks Earlier This Month For Christmas

Veterans in school under the Korean GI Bill will get a Christmas present from Uncle Sam in the form of extra-early mailings of their GI allowance checks this month, the Veterans Administration has announced.

A special time-saving system will enable the VA to get GI checks in the mail before most veteran-students go home for the Christmas vacation, the agency said.

Normally, the VA explained, GI allowance checks are mailed around the 20th of the month. But in December, many schools and colleges begin holiday vacations before that date.

VA's "Operation Christmas" calls for regional offices to speed up allowance payments for GI trainees and arrange with Treasury Department disbursing offices for earlier-than-usual mailings.

State College Answers Timely Farm Questions

Q. Should I get rid of cows in my herd producing 5,000 pounds of milk per year?

A. Generally cows producing less than 6,000 pounds of milk should be replaced with more productive ones. This is about the "break-even" point in most herds under average conditions and management.

Q. Does it pay financially to "treat" fence posts?

A. Yes. This treatment more than pays for itself in extra life for the fence; unless a naturally durable wood such as black oak, locust, or catalpa is used. Wood must be dry and well-seasoned before treatment so that the chemical can soak into the wood.

Q. Is second-growth timber inferior to virgin timber?

A. A report from the U. S. Forest Products Laboratory discredits the widespread belief that second-growth timber is necessarily inferior to virgin timber from the same forest. It points out that second-growth sometimes yields even better timber than the original stand. Proper management appears to be the key to growing high-grade timber.

Q. What are the recommended cooking times for turkeys of different sizes?

A. For a turkey weighing 8 to 10 pounds, cooking time is from 2 1/4 to 2 1/2 hours; 10 to 12 pounds, 2 3/4 to 3 hours; 14 to 16 pounds, 3 to 3 1/4 hours; 18 to 20 pounds, 3 1/4 to 3 1/2 hours; and 22 to 24 pounds, 3 1/2 to 3 3/4 hours. Oven temperature for all sizes is 450 degrees.

Q. What is the best soil to use in growing African Violets?

A. A good mixture for heavy soils for the Piedmont and mountain sections of the state is one-third soil, one-third woodsmold or peatmoss, and one-third coarse sand. For the eastern part of the state, one-half woodsmold or peatmoss and one-half soil. In feeding, use a high analysis water soluble fertilizer at the rate of one teaspoon per gallon of water and water the plants with this solution every two weeks.

Q. What is the recommended way to kill annual winter weeds in alfalfa?

A. Many of these weeds can be controlled by the proper and timely use of dinitro (DNBP). Between \$3 and \$6 worth of chemical used now can save good stands of alfalfa which cost much more to establish. Dinitro should be applied evenly on dormant alfalfa in 30 gallons or more of water per acre on a day when air temperatures are 60 degrees or more. Results are better on a sunny day.

Tippetts Had Sandwiches For Breakfast . . .

By GENE DOWDLE

Last Thursday morning as Mrs. John Tippetts cooked breakfast, she received quite a shock. Her wood stove exploded.

When asked what caused the explosion, she explained that the hot water heater was connected to the stove and the water had frozen the night before. So, when she lit the stove it caused pressure to build up in the water pipe that runs through the stove and it exploded.

The family had to be content with eating sandwiches for breakfast.

ELECTED OFFICER

J. P. Brady, news editor of The Press, has been elected a vice-president of the W.N.C. Press Association for 1958.

LEGAL ADVERTISING

EXECUTRIX NOTICE

Having qualified as Executrix of the Estate of O. C. Corbin, deceased, late of Macon County, N. C., this is to notify all persons having claims against the estate of said deceased to exhibit them to the undersigned on or before the 12th day of November, 1958, or this notice will be pleaded in bar of their recovery. All persons indebted to said estate will please make immediate settlement.

debited to said estate will please make immediate settlement. This 12th day of November, 1957.

MAUDE L. CORBIN, Executrix

Gneiss Rural Station Franklin, N. C. N21-6tp-D26

EXECUTOR'S NOTICE

Having qualified as executor of the estate of Pearl Yost, deceased, late of Macon County, North Carolina, this is to notify all persons having claims against the estate of said deceased to exhibit them to the undersigned on or before the 5th day of December, 1958, or this notice will be pleaded in bar of their recovery. All persons indebted to said estate will please make immediate settlement.

This 5th day of December, 1957.

ADAM J. YOST, Executor, Route 1, Franklin, N. C. or c/o J. H. Stockton, Atty. Franklin, N. C.

D12-6tp-J16

Administrator's Notice

Having qualified as administrator of James Maurene Burrell deceased, late of Macon County, N. C., this is to notify all persons having claims against the estate of said deceased to exhibit them to the undersigned on or before the 14 day of November, 1958, or this notice will be pleaded in bar of their recovery. All persons indebted to said estate will please make immediate settlement.

This 14 day of November, 1957.

G. F. BURRELL, Administrator N21-6tp-D23

Old Fashioned Christmas Goodies . . .

- 2 Lb. Stick Candy
- 1 Lb. Chocolate Covered Cherries
- 1 Lb. Asst. Chocolates
- Old Fashioned Hard Mix
- Big Assortment of Nuts
- Apples
- Oranges and Tangerines

BROWN & CARSON

Phone 297 Franklin, N. C.

WFSC SCHEDULES

"1050 on your Dial"

Regular Week-Day

7:14 Sign on	12:15 Moments of Remembrance
7:15 Mountain Country Jubilee	12:20 WFSC Farm News
7:30 Morning News Summary	12:25 Dinner Bell
7:45 Mountain Country Jubilee	Carolina Mountain Boys (Sat. only)
Franklin Press-Weimar Jones (Wed. only)	1:00 WFSC Local News
8:00 WFSC News	1:05 Rambling Rhythms
8:05 Swap Shop	1:30 UNC Football (Sat. only) with scoreboard to follow until 4:40
8:20 The Sundial	3:00 Cornpone Capers
8:30 Weather Roundup	3:30 Teenage Platter Party
8:35 The Sundial	4:00 Uncle Remus Stories
8:55 WFSC N. C. News	4:15 Cochran Girls
9:00 Morning Devotional	4:30 WFSC Treasure Chest
9:15 Coffee Break	4:40 Tunes for Twilight Franklin Press
9:30 Faith of Millions	4:55 Sports Show
9:45 Party Line	5:00 WFSC Evening News Summary
10:00 Down Memory Lane	5:15 Rev. Glenn Anderson (Way of Life)
10:30 Startime	5:30 Sign off
11:00 Birthday Club	
11:15 Hymns of the Hills	
11:30 Mountain Echoes (Sat. only)	
12:00 WFSC Noon News Summary	

Night-Time FM Soon — Watch for Announcement

AUTOMOBILE INSURANCE, YES
 we sell it and all other kinds of insurance, and you can't buy broader coverage dollar for dollar than we offer, see us for prices and advice before you buy. Call in Franklin 697 or stop by the Frank. agency office in the Ashlar Bldg. Ins. R. S. Peet, Agent.

TAXES - TOWN OF FRANKLIN

Don't forget to pay your town taxes so that they may be deductible from your taxable income.

1957 Town taxes are already more than two months past due.

CHAS. O. RAMSEY,
Tax Collector,
Town of Franklin

STOP and GO... in Safety with CO-OP. MUD AND SNOW TIRES

TUBED OR TUBELESS

CAR TIRE

6.70 x 15
\$18.55

Country Squire Tires on your car will get you through where other tires fail. The special tread design has greater gripping power, is long wearing and quieter on smooth roads. Black or White Sidewalls.

TRUCK TIRE

6.50 x 16
\$23.93
Plus Tax

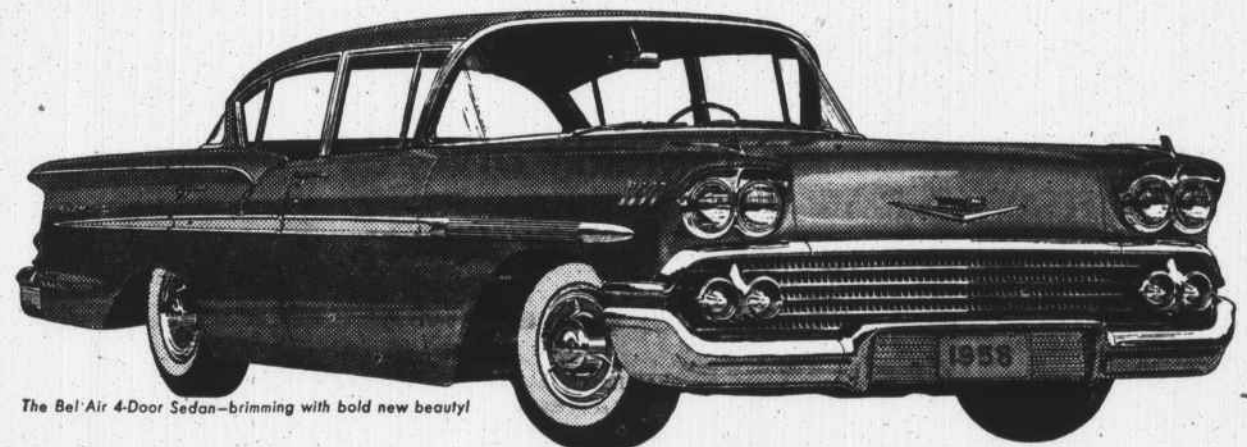
6.00 x 16
\$22.16
Plus Tax

FARMERS FEDERATION
A. E. FRIZZELL, Manager
Phone 92 Franklin, N. C. Palmer St.

SOCK that Sox full of these GOODIES

- APPLES
- ORANGES
- WALNUTS
- CHESTNUTS
- STICK CANDIES
- GRAPES
- TANGERINES
- BANANAS

FROM DOWNS and DOWDLE



The Bel Air 4-Door Sedan—brimming with bold new beauty!

Come try the quickest combination on the road! CHEVY'S TURBO-THRUST V8 WITH TURBOGLIDE



The Bel Air Impala Sport Coupe—one of two new super sport models!

There's never been an engine-drive combination like this one! Chevrolet's Turbo-Thrust V8* introduces a radical new slant on engine efficiency with the combustion chambers located in the block rather than in the head. Turboglide*—the other half of the team—is the only triple-turbine automatic drive in Chevy's field. It takes you from a standstill through cruising in a single sweep of motion. Harness these triple turbines to a 250-h.p. Turbo-Thrust V8—or the 280-h.p. Super Turbo-Thrust*—and you step out instantly in any speed range. Nothing else on the road goes into action so quickly, so smoothly. Your Chevrolet dealer has the combination!

'58!

CHEVROLET

*Optional at extra cost.