

SERVICES OF MACON COUNTY CHURCHES

CULLASAJA
Rev. R. E. Stephenson
Sunday School 10 a.m.
Worship 11 a.m.
C. A. Service 7:30 p.m.
Evangelistic Service 8:00 p.m.

FRANKLIN
Assembly of God
Rev. Fred Sorrells, Pastor
Sunday School 10 a.m.
Worship 11 a.m.
Evangelistic Services 7:30 p.m.
Thursday—
Prayer Meeting 7:30 p.m.

MT. SINAI
Rev. Roy Moore, Pastor
Sunday School 10 a.m.
Worship 11 a.m.
Evangelistic Service 7:30 p.m.
Wednesday—
Prayer Meeting 7:30 p.m.

★ ★ ★
Baptist

BLACK MOUNTAIN
Rev. Clyde Monteith
Sunday School 10 a.m.
Worship:
11 a.m. 1st and 3rd Sundays
7:30 p.m. 1st and 3rd Sundays

BUCK CREEK
Rev. Harold Cabe, Pastor
Sunday School 10 a.m.
Worship 11 a.m.

BURNINGTOWN
Rev. T. A. Slagle, Pastor
Sunday School 10 a.m.
Morning Worship 11 a.m.
Evening Worship 7:30 p.m.
Wednesday—
Prayer Meeting, 7:30 p.m.

CARTOOGECAYE
Rev. W. A. Cloer, Pastor
Sunday School 10 a.m.
Worship:
11 a.m. 2nd and 4th Sundays
8 p.m. 1st and 3rd Sundays
Training Union 7 p.m.

COWEE
Rev. Clyde Rhinehart, Pastor
Sunday School 10 a.m.
Worship 11 a.m.
Training Union 7 p.m.
Evening Service 8 p.m.
Wednesday Night Prayer Meeting
7:30 p.m.

ELLIJAY BAPTIST CHURCH
Rev. Oscar Nix, Pastor
Sunday School 10 a.m.
Worship Service 11 a.m.
2nd and 4th Sundays
Prayer Service—
Wednesday Evening 7:30

FIRST—FRANKLIN
Rev. Robert R. Standley, Pastor
Sunday School 9:45 a.m.
Morning Worship 11 a.m.
Training Union 6:45
Evening Worship 8:00
Wednesday—
Prayer Meeting 8:00 p.m.

HIGDONVILLE
Rev. Paul Sorrells, Pastor
Sunday School, 9:45 a.m.
Worship:
11 a.m. 2nd and 4th Sundays
8:00 p.m. 1st and 3rd Sundays
Training Union, 7:00 p.m.
Wednesday—
Prayer Meeting 7:30 p.m.

FIRST—HIGHLANDS
Rev. J. H. Propst, Pastor
Sunday School 10 a.m.
Worship 11 a.m.
Training Union 7 p.m.
Evening Service 8 p.m.
Wednesday—
Prayer Meeting 8 p.m.

HOLLY SPRINGS
Sunday School 10 a.m.
Worship 11 a.m.
Training Union 7 p.m.
Evening Service 8 p.m.
Wednesday—
Prayer Meeting 7 p.m.

CENTRAL MISSIONARY
Rev. John W. Goforth, Pastor
Sunday School 10 a.m.
Worship 2nd and 4th
Sundays 11 a.m.
Evening Worship 8 p.m.
Thursday—
Prayer Meeting 7:30

IOTLA
Rev. Manuel C. Wyatt, Pastor
Route 3, Franklin, N. C.
Sunday School 10 a.m.
Worship 11 a.m.
Training Union 7:15 p.m.
Evening Service 8:15 p.m.
Wednesday—
Prayer Meeting 7:30 p.m.

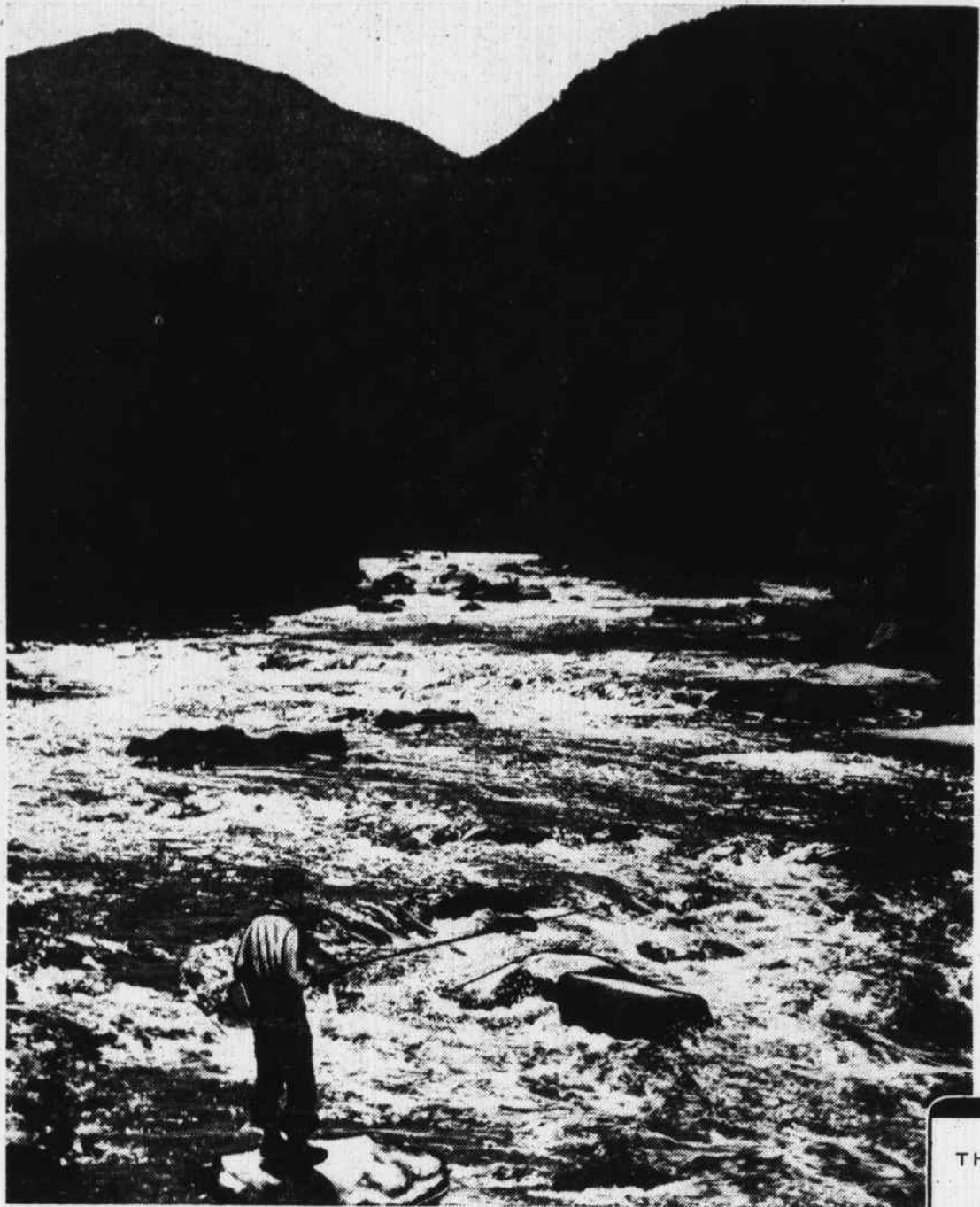
LIBERTY BAPTIST
Rev. Melvin Brooks, Pastor
Sunday School 10 a.m.
Worship 8 p.m.
1st and 3rd Sundays
Training Union 7 p.m.
Morning Worship 11 a.m.
2nd and 4th Sundays

LONGVIEW—Georgia Road
Rev. W. A. Cloer, Pastor
Sunday School 10 a.m.
Training Union 7 p.m.
Morning Worship 11 a.m.
1st and 3rd Sundays
Evening Service 8 p.m.
2nd and 4th Sundays
Wednesday—
Prayer Meeting 7:30 p.m.

MOUNT HOPE
Rev. John Ralph Willis, Pastor
Sunday School 10 a.m.
Worship 11 a.m.
Training Union 7 p.m.
Evening Service 8 p.m.
Wednesday—
Prayer Meeting 7:30 p.m.

NEWMAN'S CHAPEL
Rev. Lee Crawford, Pastor
Sunday School 10 a.m.
Morning Worship, 2nd and 4th
Sundays 11 a.m.
Evening Worship 3rd Sunday
8 p.m.
Training Union 7 p.m.

OAK GROVE
Rev. Jud Duvall, Pastor
Sunday School 10 a.m.
Morning Worship 11 a.m.
2nd and 4th Sundays
Evening Worship 8 p.m.
1st and 3rd Sundays
Wednesday—
Prayer Meeting 7:30 p.m.



How small man seems, compared to a mountain or even a tree. And yet, how great is his potential! Man can fashion a tree into a chair, a boat, or a house. And he can, if he wants, tunnel through a mountain.

Man has been created in God's own image; he has been given dominion over the earth and over all other creatures on the earth. Among the many gifts which God has given to man are intelligence, initiative and will power. But the use of these gifts must be motivated by the love of God if man is to be rewarded with peace and happiness.

Down through the ages, the Church has been teaching man that the misuse of intelligence and power brings on sin and self-destruction, while love-motivated use of God's gifts brings joy, peace of mind and salvation.

Church attendance, prayer and worship will help anyone understand the proper relationship between God and man.

In His IMAGE



THE CHURCH FOR ALL . . . ALL FOR THE CHURCH

The Church is the greatest factor on earth for the building of character and good citizenship. It is a storehouse of spiritual values. Without a strong Church, neither democracy nor civilization can survive. There are four sound reasons why every person should attend services regularly and support the Church. They are: (1) For his own sake. (2) For his children's sake. (3) For the sake of his community and nation. (4) For the sake of the Church itself, which needs his moral and material support. Plan to go to church regularly and read your Bible daily.

Day	Book	Chapter	Verses
Sunday	Genesis	1-25	1-25
Monday	Genesis	26-31	26-31
Tuesday	Psalms	1-9	1-9
Wednesday	Psalms	1-6	1-6
Thursday	Ephesians	1-24	1-24
Friday	Colossians	1-17	1-17
Saturday	Jeremiah	31	1-14



PRENTISS BAPTIST CHURCH
Rev. Lee Crawford, Pastor
Worship: 11 a.m. 1st and 3rd Sun.
Sunday School: 10 a.m. every Sun.

PINE GROVE
Rev. W. K. Shields, Pastor
Sunday School 10 a.m.
Worship:
11 a.m. 1st and 3rd Sundays
8 p.m. 2nd and 4th Sundays
Evening Service 8 p.m.
Training Union 7 p.m.
Wednesday—
Bible Study 8 p.m.

PLEASANT HILL
Rev. Claude Ledford, Pastor
Sunday School 10 a.m.
Worship 11 a.m. 2nd Sunday

RIDGECREST
Rev. Thad Dowdle, Pastor
Sunday School 10 a.m.
Worship 11 a.m.
1st and 3rd Sundays
Evening Service 8 p.m.
2nd and 4th Sundays
Training Union 7:30 p.m.
Wednesday—
Bible Study 8 p.m.

ROSE CREEK
Rev. Claude Ledford, Pastor
Sunday School 10 a.m.
Worship:
11 a.m. 2nd and 4th Sundays
7:30 p.m. 2nd and 4th Sundays

SUGARFORK
Rev. Jarvis Underwood, Pastor
Sunday School 10 a.m.
Morning Worship 11 a.m.
1st and 3rd Sundays
Evening Worship 8 p.m.
2nd and 4th Sundays
Training Union 7 p.m.

TELLICO
Rev. T. A. Slagle, Pastor
Sunday School, 10 a.m.
Worship 11 a.m.
2nd and 4th Sundays

WALNUT CREEK WALNUT CREEK BAPTIST CHURCH
Pastor, Paul Morgan
Sunday School, 10 a.m.
Worship: 11 a.m.
1st and 3rd Sundays
Prayer Meeting 7:30 p.m.
Each Friday
Group Singing 2:00 p.m.
1st Sunday

WATAUGA
Rev. Jud Duvall, Pastor
Sunday School 10 a.m.
Worship 11 a.m.
1st and 3rd Sundays
Evening Service 8 p.m.
2nd and 4th Sundays
Thursday—
Prayer Meeting 8 p.m.

WINDY GAP BAPTIST CHURCH
Rev. C. C. Welch, Pastor
Sunday School 10 a.m.
Worship Service 11 a.m.
Training Union 7 p.m.
Service 8 p.m.

WELLS GROVE BAPTIST
Rev. Melvin Brooks, Pastor
Sunday School 10 a.m.
Worship 11 a.m.
Training Union, 7 p.m.
Wednesday—
Prayer Meeting 7 p.m.

★ ★ ★
Catholic
Rev. Robert L. Healy, Pastor
Sunday Mass 10 a.m.
Daily Weekday Mass 7:30 a.m.
Confessions before Mass

★ ★ ★
Church of Christ
FRANKLIN
Bible Study 10 a.m.
Worship 11 a.m.

Episcopal
ST. AGNES—Franklin
Rev. John W. Tucker, Pastor
Holy Communion 8 a.m.
Every Sunday
Holy Communion 11 a.m.
1st Sunday
Morning Prayer 11 a.m.
2nd, 3rd, 4th, and 5th Sundays
Church School 10 a.m.
Every Sunday
Adult Study Class 10 a.m.

ST. CYPRIAN'S—Franklin
Rev. John W. Tucker, Pastor
Holy Communion 9 a.m.
1st Sunday
Morning Prayer 9 a.m.
2nd, 4th, and 5th Sundays
Church School 10 a.m.

ST. JOHN'S—Cartoogechaye
Rev. A. Rufus Morgan, Rector
Holy Communion 7 a.m.
1st and 5th Sundays
Evening Prayer 4 p.m.

INCARNATION—Hightands
Rev. Herbert Koepf-Baker, Rector
Holy Eucharist and Sermon
11 a.m. 1st and 3rd Sundays
Other Sundays—Morning Prayer
and Sermon
Church School 10 a.m.

Church of God
CARTOOGECAYE
Rev. Fred W. Shooks, Pastor
Worship 10 a.m.
Young People's Service, 6:45 p.m.
Worship 7:45
Wednesday—
Prayer Meeting 8 p.m.

PRENTISS
Rev. Willie O. Bowman, Jr., Pastor
Sunday School 10 a.m.
Worship 11 a.m.
Evening Service 7 p.m.
Wednesday—
Prayer Meeting 7 p.m.
Saturday—
Y.P.E. 7 p.m.

SCALY
Rev. Vernon Wood, Pastor
Sunday School 10 a.m.
Worship 11 a.m.
Y. P. E. 7:30 p.m.
Wednesday—
Prayer Meeting 7:30 p.m.

TESENTA
Rev. E. P. Davenport
Sunday School 10 a.m.
Morning Worship 11 a.m.
Evangelistic 8 p.m.
Wednesday—
Prayer Meeting 8 p.m.
Saturday—
Young People's Service 8 p.m.

Methodist
CARSON CHAPEL
Rev. Paul Heafner, pastor
Sunday School:
10 a.m. 3rd and 4th Sundays
11 a.m. 1st and 2nd Sundays
Worship:
10 a.m. 1st and 2nd Sundays
11 a.m. 3rd Sundays
8 p.m. 4th Sunday
M. Y. F. 7 p.m.

FIRST—FRANKLIN
Rev. Robert E. Early, pastor
Sunday School 10 a.m.
Worship 11 a.m.
Junior Intermediate Fellowship,
7 p.m.
M. Y. F. 7 p.m.
Bible and Prayer Hour 8 p.m.

FRANKLIN CIRCUIT
Rev. R. L. Poindexter, pastor

BETHEL
Worship:
11 a.m. 1st Sunday
10 a.m. 3rd Sunday
7:30 p.m. 2nd Sunday
Sunday School:
10 a.m. 1st, 2nd & 4th Sundays
11 a.m. 3rd Sunday

CLARK'S CHAPEL
Sunday School
11 a.m. 1st and 4th Sundays
10 a.m. 2nd and 3rd Sundays
Worship:
10 a.m. 1st and 4th Sundays
11 a.m. 3rd Sunday

HICKORY KNOLL
Sunday School:
10 a.m. 1st, 3rd, and 4th
Sundays
11 a.m. 2nd Sunday
Worship:
10 a.m. 2nd Sunday
11 a.m. 4th Sunday

DRYMAN'S CHAPEL
Sunday School 10 a.m.
Worship:
11 a.m. 2nd Sunday
8 p.m. 4th Sunday

SALEM
Rev. Robert Early, Pastor
Sunday School 2:30 p.m.
Worship:
3 p.m. 1st and 3rd Sundays

SCALY
J. C. Vernon, Pastor
Sunday School 2 p.m.
SNOWHILL—IOTLA
Rev. Paul Heafner, pastor
IOTLA
SUNDAY SCHOOL:
10 a.m. 1st Sundays
10:45 a.m. 2nd, 3rd and 4th
Sundays
Worship:
11 a.m. 1st Sun., 7 p.m. 2nd Sun.
10 a.m. 3rd and 4th Sundays

RIVERVIEW
Sunday School 2 p.m.
Worship:
2:30 p.m. 1st and 3rd Sundays

SNOW HILL
Sunday School 10:15 a.m.
Worship:
11 a.m. 2nd and 4th Sundays
Wednesday—
Bible Study and Prayer Service
8 p.m.

WEST MACON
Rev. J. C. Lane, pastor

GILLESPIE
Sunday School:
10 a.m. 2nd, 3rd, 4th, 5th Sun.
11 a.m. 1st Sunday
Worship:
10 a.m. 1st Sunday
11 a.m. 4th Sunday
7:30 p.m. 3rd Sunday

LOUISA
Sunday School:
10 a.m. 1st, 3rd, 4th and 5th
Sundays
11 a.m. 2nd Sunday
Worship:
10 a.m. 2nd Sunday
11 a.m. 3rd Sunday
7:30 p.m. 4th Sunday

MAIDEN'S CHAPEL
Sunday School:
10 a.m. 1st, 2nd, 3rd, 5th Sun.
11 a.m. 4th Sunday
Worship:
10 a.m. 4th Sunday
11 a.m. 1st Sunday
7:30 p.m. 2nd Sunday

MOUNT ZION
Sunday School:
10 a.m. 1st, 2nd, 4th, 5th Sun.
11 a.m. 3rd Sunday
Worship:
10 a.m. 3rd Sunday
11 a.m. 2nd Sunday
7:30 p.m. 1st Sunday

MASON CIRCUIT
Rev. EARL T. Crowe, pastor

PATTON'S CHAPEL
Worship:
10 a.m. 1st Sunday
11:15 a.m. 2nd Sunday
8 p.m. 4th Sunday
UNION
10 a.m. 3rd Sunday
11:15 a.m. 1st Sunday
8 p.m. 2nd Sunday

MULBERRY
Worship:
10 a.m. 2nd Sunday
11:15 a.m. 4th Sunday
8 p.m. 3rd Sunday

ASBURY
Worship:
10 a.m. 4th Sunday
11:15 a.m. 3rd Sunday
8 p.m. 1st Sunday

★ ★ ★
Non-Denominational
SLOAN'S CHAPEL—E. Franklin
Sunday School 10 a.m.
Worship 11 a.m. & 8:30 p.m.
Young People's Society 7:30 p.m.
Tuesday—
Prayer Meeting 7:30 p.m.

★ ★ ★
Presbyterian
FRANKLIN
Rev. Donn Langfitt, Pastor
Sunday School 10 a.m.
Worship 11 a.m.
Wednesday—
Prayer Meeting 7:30 p.m.

MORRISON
Rev. Donn Langfitt, Pastor
Sunday School 10 a.m.
Youth Fellowship 7 p.m.
Evening Worship 7:30 p.m.

FIRST—Highlands
Sunday School 10 a.m.
Worship 11 a.m.
Youth Fellowship 7:30 p.m.

This Series is Sponsored as a Public Service by the Following:

- | | | | |
|------------------------|-----------------------------|---------------------------|------------------------------|
| The Bank of Franklin | Macon County Supply Co. | Burrell Motor Co. | Franklin Hardware Co. |
| Belk's Dept. Store | Franklin Hosiery Co. | Brown and Carson | Reeves Hardware Co. |
| Macon Motor Co. | Macon Construction Co. | Sossamon Furniture Co. | Conley Motor Co. |
| Twins' Shop | Western Auto Asso. Store | Downs and Dowdle | Crisp's Studio & Camera Shop |
| Franklin 5 & 10c Store | Dryman's Men and Boys' Shop | Nantahala Oil Co. | Baldwin Market |
| Farmers Federation | Nantahala Power & Light Co. | S & L 5 and 10c Store | Lee Poindexter |
| | | Town Hill Service Station | |

Wesleyan Methodist
BUCK CREEK
Rev. Wilson Bryans, Pastor
Sunday School 10 a.m.
Morning Worship 11 a.m.
1st and 3rd Sundays