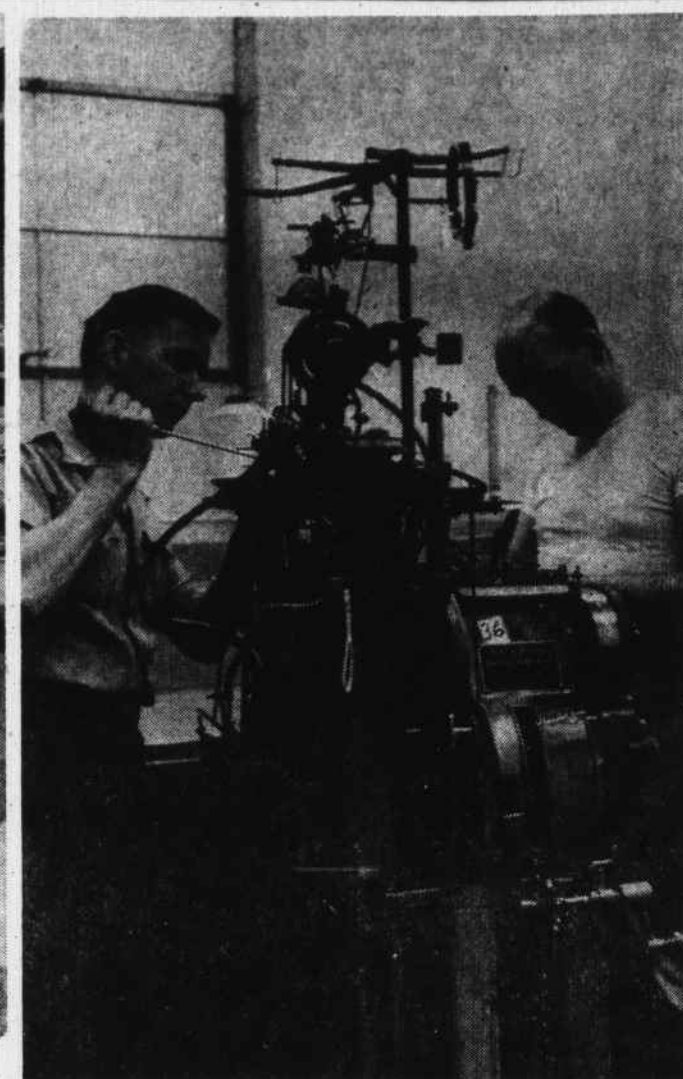




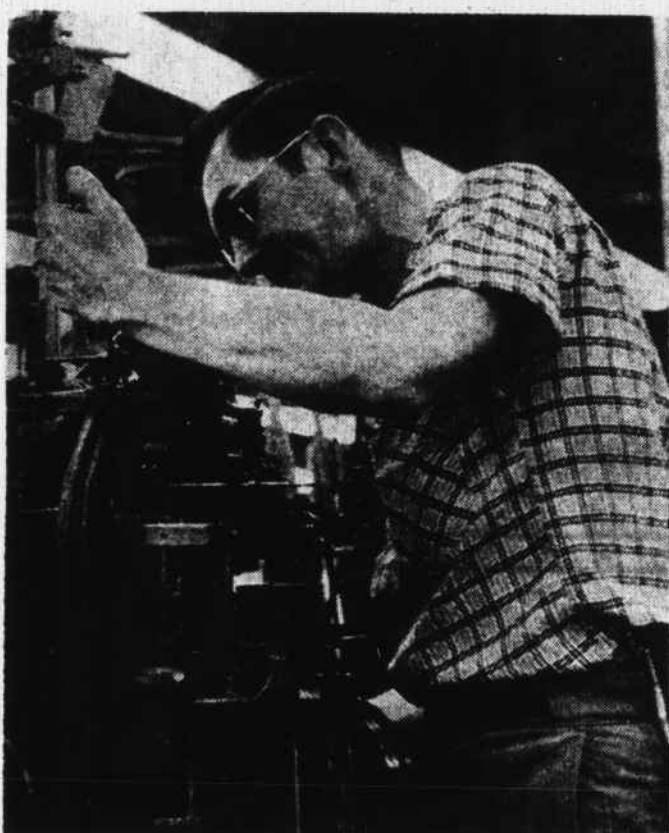
LOOPING, where the toe of the stocking is sewn, is the second step in the making of seamless hosiery. These women are shown placing the stockings on looping dials.



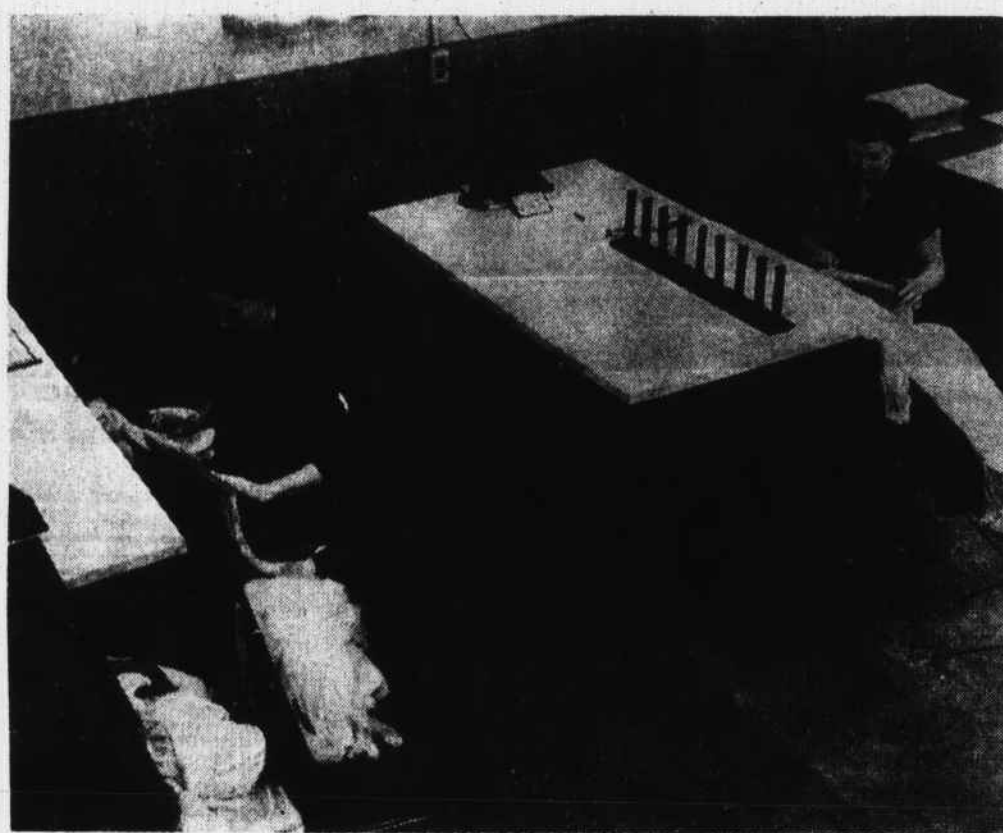
SECOND OPERATION in the manufacture of hosiery is looping, in which the toe of the stocking is sewn. At work on a looper dial is Mary Garner.



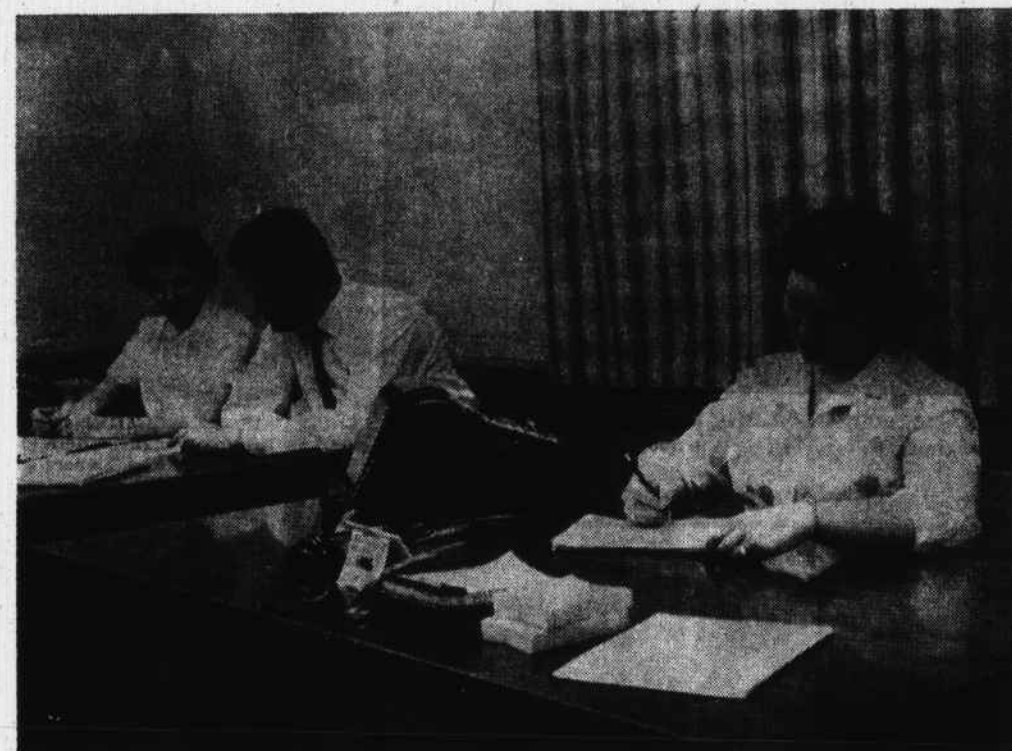
THE FIXER SHOP is where machines are taken for reconditioning. At work on one are fixers Clyde Kinsland and Afton Weaver.



FIXERS employed at Franklin Hosiery insure that machines stay in good running condition at all times. Showing making an adjustment is Doc Flemmens, a first-shift fixer.



QUALITY IS most important and to maintain the high standard of Burlington quality hosiery is the Quality Control Department. Shown at work are Willie Poole and Burnette Franks, recheck operators. Each stocking is inspected on a form board.



FRANKLIN HOSIERY'S office force is under the supervision of Dick Murphy, who is shown with Pat Childers at her desk. At right is JoAnn Sellers. Both women are office clerks.

MANY, MANY

HAPPY RETURNS

OF THE DAY

TO

FRANKLIN HOSIERY COMPANY

We feel that you are a great asset our community in many different ways. Besides contributing to our economic life, your personnel has contributed greatly to the leadership of our community.

We hope that you will have many, many more happy birthdays here.

PEOPLE'S DEPARTMENT STORE

To Franklin Hosiery Company

And Their Employees . . .

Happy 5th Anniversary

We are proud of your growth and development . . . long may it continue.

Nantahala Creamery