

Is a Paper Devoted to the Upbuilding of the Sandhill Territory of North Carolina

Address all communications to THE PILOT PRINTING COMPANY, VASS, N. C.

THURSDAY, SEPTEMBER 20, 1923

SUBSCRIPTION \$1.50

ABERDEEN SCHOOL FACILITIES

Consolidated District Employs 25 Teachers—Courses Up To Large City Standard

The Aberdeen Consolidated School District, comprising the territory around Aberdeen and taking in the towns of Pinebluff and Addor, may well pride itself of its school system. Two commodious and up-to-date school buildings, one of which has just been completed at a cost of \$50,000.00 house its pupils. A faculty of teachers selected solely on their qualifications and a curriculum pat-

The school has a library of three hundred volumes selected from the list recommended by the State Board of Education. This library is comprised of works of reference, history, science and some fiction. In addition a laboratory has been installed for the high school science work at a cost of \$1400.

All this has been accomplished in the course of a little more than a year by hard and determined effort on the part of the school board guided by the present Superintendent, J. E. Redfern. From a school which was not on the accredited list, it has

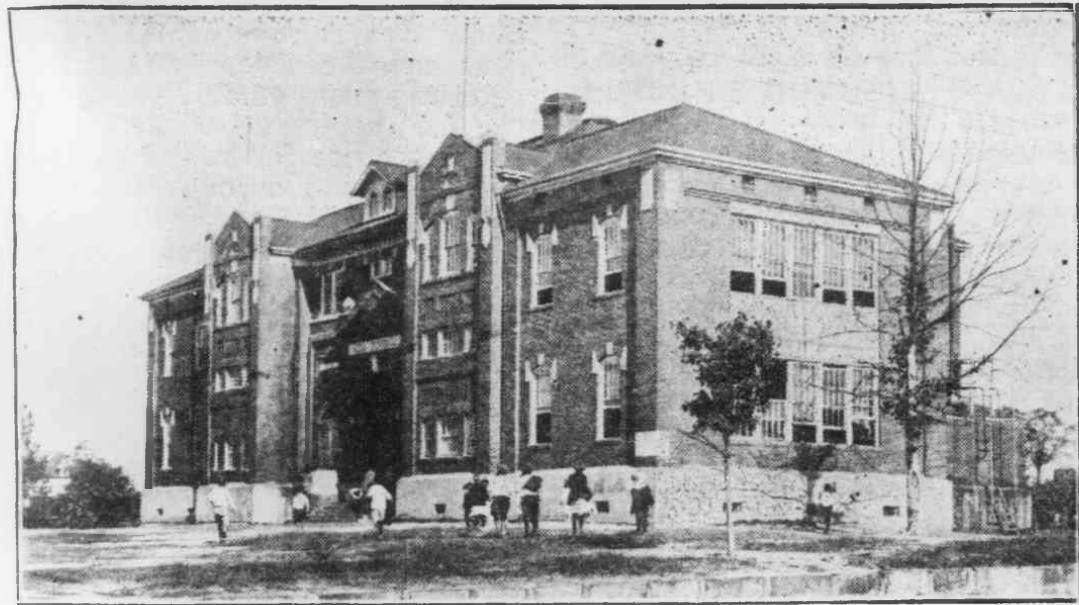


New Graded School Building

termed after city school standards bid fair to make the Aberdeen Schools stand out as a model for other communities to pattern after. The school has already attained the rank of a group B-1 school under the State Board of Education's classification. To rank as a group A-1 school, the highest standard, it will only have to add another vocational training course to its curriculum. A department of Home Economics was instituted this

jumped to first rank, and where formerly only three high school teachers were employed there are now five who give their entire time to teaching in the high school.

Music, both instrumental and voice, is being taught throughout the course. Three instructors give their time to it. At the close of last year there were eighty-four pupils taking music and the school boasts of an orchestra of twenty-two pieces.



High School Building

year, and the school board hopes to be able to add to it a Manual Training Course next year, thus advancing the school into the A-1 classification.

The schools have as large a faculty as some of the city schools in the state, a minimum of twenty teachers being required for a recognized city school system. The number of teachers employed not only exceeds this minimum, but in addition, all teachers are graduates of A grade colleges and college trained. In the high school all instructors have their A. B. Degree.

Physical Culture also holds its due place in the schools' activities. In the high school the physical culture and the school athletics are under the supervision of the principal, Prof. C. P. Ashley, for the boys, and Miss Lela Wade for the girls. Miss Ruby Walden supervises the exercises in all the grammar grades.

The colored schools in the territory of the district are also under the supervision of the school board and Superintendent J. E. Redfern. Two schools, one in Aberdeen, and one at Addor with seven teachers furnish instruction in these.

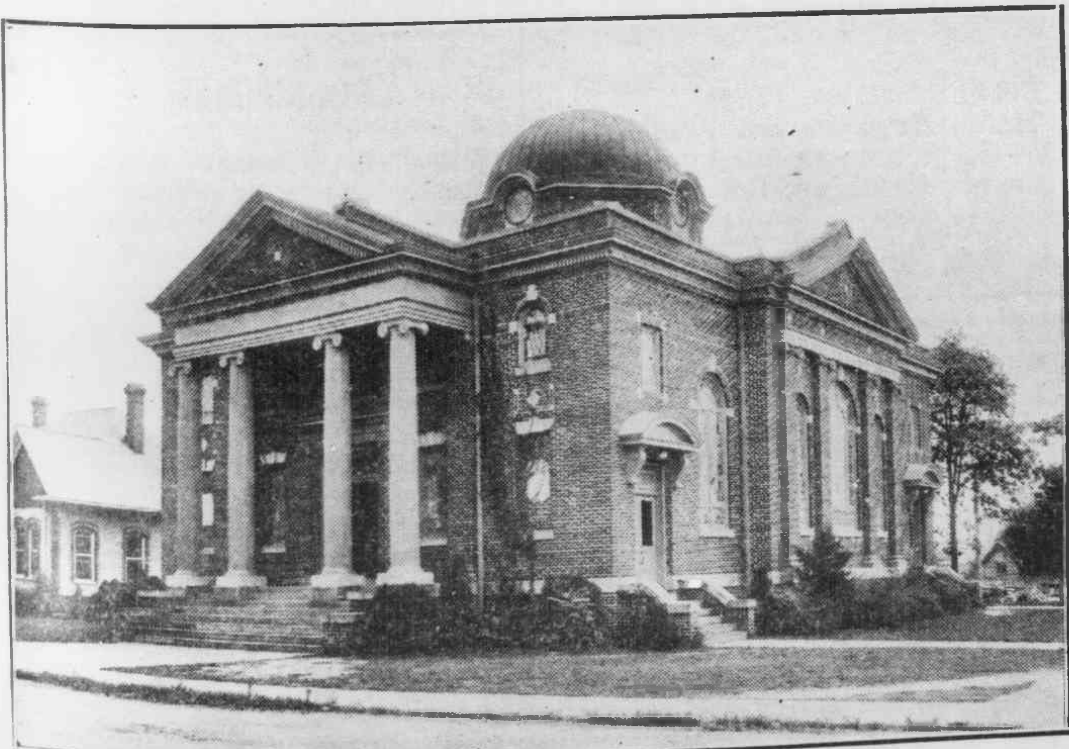
CHURCHES IN ABERDEEN

Methodist, Presbyterian and Baptist Denominations Represented—Sunday Schools—Societies

Three religious denominations have places of worship in Aberdeen—the

taken in the various societies in each of the churches.

The Methodist Episcopal church is a beautiful edifice and was erected as a memorial to Mr. Frank Page. The Presbyterian church just at present is being enlarged and beautified. The Baptist church, of which The Pilot could not resurrect a cut or picture,



Page Memorial Church

Methodist, Presbyterian and Baptist. All of them are in a growing and flourishing condition. The Sunday Schools of all churches are being well attended and a keen interest is being

occupies a comfortable structure also. The present pastors of the various churches are: Methodist, Rev. Euclid McWhorter; Presbyterian, Rev. V. R. Gaston; Baptist, Rev. Jesse Blalock.

ABERDEEN

The Pilot, by its recent declaration that it "is a paper devoted to the upbuilding of the Sandhill territory" links its hopes and destinies also with Aberdeen. Aberdeen is a part and parcel of the Sandhills and the Pilot is, therefore, part and parcel of Aberdeen.

The Pilot sends forth this, its Aberdeen Industrial Edition, to supplement in a measure the efforts that are now being put forth by its merchants and business men to advance the interests of Aberdeen as a Tobacco Market and as a Trading Town. In picture and type The Pilot seeks to portray the past accomplishments made, and the visions dreamed of by its builders.

Some progress is thrust upon Aberdeen, and some it must achieve. Its location, situation and railroad facilities make it stand out as the industrial town of the Sandhills, but its business men are going to improve their opportunity, to make Aberdeen come into its own.

To goad them on there are the constantly arising rumors of industries seeking to come into the town. A cotton mill is talked of, a tobacco stemery and dry prizer is a possibility, a knitting mill is in prospect, and a cannery is said to be assured. And, as a fitting climax, there looms up another trunk line railroad to traverse the State from the coal fields to the much discussed port of Southport. One of the surveys puts the road through Aberdeen, and the Kiwanis Club, which is sponsoring the interests of this section in conjunction with the Chambers of Commerce of the other towns along the proposed route, will not allow its hopes to become daunted.

Aberdeen must come!

ABERDEEN HOTEL

Well Located Hostelry Under Good Management—Steam Heated and Modern

The Aberdeen Hotel, operated by Crown W. Wilson, who has been in the hotel business in Gastonia, Columbia and other principal towns in North Carolina, is prospering under the present management. It is kept clean and sanitary and the guests are made comfortable. The hotel has fifty rooms, twenty-five of which have connecting baths; all are steam heated.

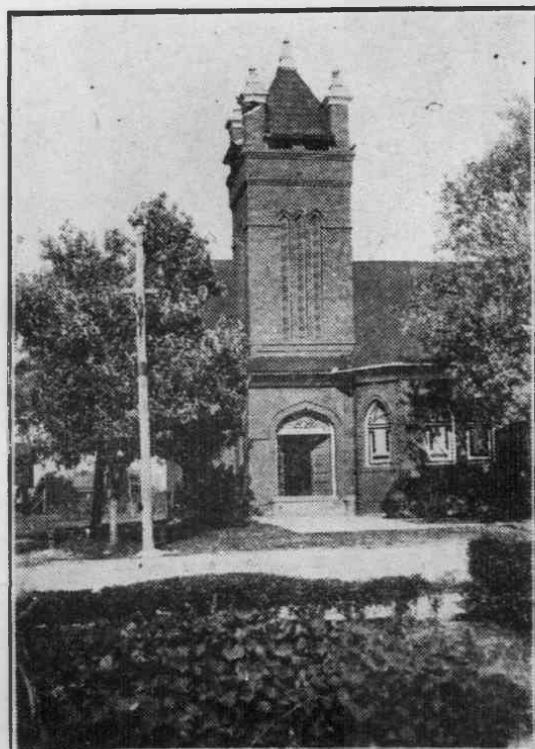
A barber shop, a cleaning and pressing establishment and the Western Union Telegraph office occupy the ground floor for the further convenience of the hotel's patrons.

Mr. Wilson also operates the Jackson Springs Hotel during the summer season at the famous springs.

ALL ROADS LEAD TO ABERDEEN

Highways 50 and 70 Come Together Here—County Roads Run in Every Direction

Roads radiated from Rome in every direction so that the phrase "All roads lead to Rome" was commonly accepted. Aberdeen is likewise fortunate in that roads radiate from it to every nearby community. Two of the State's main highways cross here—the State Highway north and south and the Fayetteville road east and west. Likewise, County roads start at Aberdeen reaching out into all of the best communities. A great deal of the travel of the section goes through Aberdeen as well as the tourist travel over the highway.



Presbyterian Church

A TRADING CENTER

Aberdeen Stores Offer a Variety of Merchandise to Fill Every Want—Merchants Enterprising

Every line of business usually found in a country town is represented in

clothing and shoes; two drug stores, two hardware stores and one furniture store. A wholesale grocery is also located at Aberdeen, making it possible for the merchant to replenish his stock almost immediately. To further supplement these there is in the town one lumber and building material yard, one feed store, one elec-



Sycamore Street Looking North

Aberdeen. Some lines of business are represented by a number of stores. The town has about a round dozen of groceries and meat markets; a half dozen stores selling dry goods,

tric shoe repair shop, two cleaning and pressing establishments, one jeweler and watch repairer, three barbers, and last but not least an up-to-date, clean and sanitary restaurant.

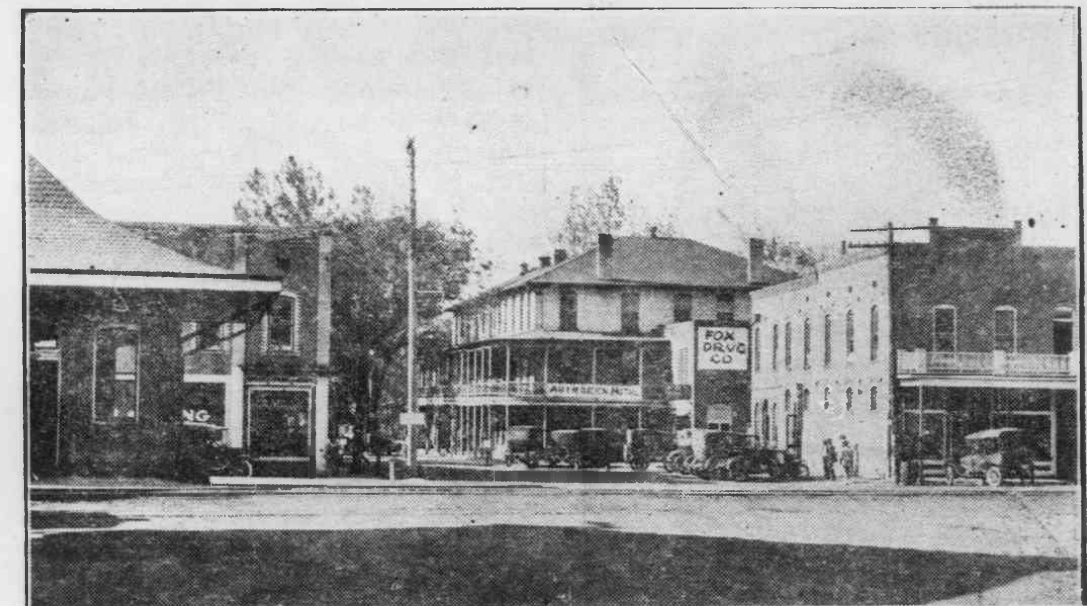
A TOWN INVIGORATOR

Aberdeen Building and Loan Association Speeding Up Building—Effects Seen in Civic Improvements

The Aberdeen Building and Loan Association which is now rounding out the second year of its existence has made a record most satisfactory to its officers and members. It enabled a score of people to build

takes in its Building and Loan Association and the esteem it has for it, only a two days canvass by the secretary resulted in subscriptions to 500 shares on its Fourth Series of stock opened September 1.

The Building and Loan Association has lived up things in Aberdeen and quickened the building program generally. Others have been prompted to build with private funds and the increase in dwellings in Aberdeen since its inception can be placed at



Main Street Looking West

houses who perhaps would not have otherwise built them. Doing this it accomplished a two-fold object for the town and community. First, it created new taxable values safely estimated at over \$70,000. Secondly, it made available more tenant houses by enabling former tenants to vacate these for their own homes. About \$45,000.00 has been paid in by its members since its incorporation and this with the interest accrued has been put back into building as quickly as it accumulated.

To show the interest that the town

about 25 per cent. This covers a period of only one and three-quarter years.

The Association has also extended its operations to the town of Pinebluff, which under a working agreement with it receives the benefit of all funds paid into it by its citizens toward Pinebluff building loans.

Secretary Sparrow has won the distinction for the Association of still having in force and regularly paid in on every share of stock issued by it. Therefore it hasn't lost or been obliged to retire a single share.

COCA-COLA PLANT

Puts Up Coca-Cola and Line of Other Beverages in Bottles—Operates Two Trucks

The Coca-Cola plant under the management of G. C. Seymour is growing with each year's operation. Modern machinery turns out a steady stream of bottled goods all day long and these are delivered all over this section by two large trucks. Coca-Cola is of course the plant's forte, but it also turns out a line of other carbonated beverages, pleasing to the taste and refreshing as well.

NEW COTTON MARKET

Will Buy Spot Cotton at Aberdeen—Buying and Receiving Now

A new firm, the Ross-McKinnon Cotton Company, made its advent into Aberdeen this week. The firm will buy spot cotton, and is composed of George R. Ross, of Jackson Springs, and A. J. McKinnon, Jr., of Maxton. It also operates at Jackson Springs and at Maxton. The Aberdeen office will be in charge of Jack McKinnon, who will grade and buy. The firm will buy from wagons at Aberdeen and will also canvass the country roundabout for cotton.

TOWN'S FIRST OFFICE BUILDING

Erected by Gichner & Johnson to Fill Pressing Demand—Houses Lawyers, Doctors, and Others

The Gichner & Johnson building on Sycamore street, the picture of which we are showing, presents a good appearance to the traveler-through on



Gichner-Johnson Building

the railroads just across Sycamore street. Its ground floor stores are occupied by some of the town's busiest stores. The entire upper floor is used by professional men and businesses requiring a centrally located office. The building is at all times filled and space therein is at a premium whenever a vacancy occurs.