

April 2, 1926.  
BOSTONES  
in Monu-  
s, write  
e Works  
C.

Is a Paper Devoted to the Upbuilding of the Sandhill Territory of North Carolina

Address all communications to  
THE PILOT PRINTING COMPANY, VASS, N. C.

FRIDAY, APRIL 16, 1926

SUBSCRIPTION \$2.00

## MODEL HOUSE AT PINEHURST SOLD

### Pennsylvania Man Says It Is His Ideal of a House

The house built on the Midland road in the edge of Pinehurst during the past few months was last week sold to J. Frank Black, of Chester, Pennsylvania, and almost at first sight. Mr. Black has been a visitor in Pinehurst for several winters, and has been looking about to find something in which he could establish himself in a permanent winter home. A few days ago his eye caught the new house that the Pinehurst corporation and the several builders have been constructing as an ideal of planning and building and supply, and he at once concluded he was interested. The color on the outside was a little out of his liking, but the minute he saw the inside he said he had found the one house to suit him to a nicety. He closed a deal for the place at once, taking two additional lots. The price runs above \$30,000. The design was by Embury, and the work by the local builders and supply men of Pinehurst. Mrs. H. B. Emery supervised the decoration and fittings and furniture, and when Mr. Black looked through the house he found it ready to move into any minute without further equipment of any kind, for even to the fancy things on the mantel the job was complete.

A new house built on the same idea will follow at once as the builders rather missed in one of their calcu-

(Continued on Page 8)

## FREEZING DAMAGED GEORGIA PEACHES

### March Cold Snap Cut Crop Probably A Third

It is quite evident that the freeze of March 14, materially affected the Georgia peach crop, if advices received in this section are authentic. Our latest information received from State Entomologist Leiby, is to the effect that the Georgia crop was reduced from a possible 15 to 18 thousand car crop to a 10 to 12 thousand car crop, the reduction being greatest in the Elberta, which was apparently none to heavily provided with fruit buds at the beginning. Dr. Leiby's further information from entomologist O. I. Snapp, of the Fort Valley laboratory is that the injury was greatest in south Georgia and

(Continued on Page 8)

### IN MEMORIAM

The Woman's Auxiliary of Eureka Presbyterian Church, Vass, N. C. No. 1, submits the following resolutions:

Whereas, God in His infinite love and wisdom has called to her eternal reward our beloved friend and Co-worker, Mrs. Myrtle Ferguson Michael, we, the members of this Auxiliary desire to pay this tribute of love and appreciation to her memory. Resolved First:

That our Auxiliary has, by her death, sustained a great loss, because earth is emptier and heaven is fuller by her departure.

Second: We commend those who love her to Him who marks the sparrow's fall, who loves and cares for those who mourn, and whose great heart yearns to comfort them in their sorrow.

Third—That a copy of these resolutions be sent to the bereaved family, a copy spreads on our minutes and a copy sent to the Presbyterian Standard and the Moore County papers for publication.

BESSIE McCASKILL.  
MARGARET BLUE.  
ESTELLE TILLMAN.  
Committee.

JOHN WILLCOX  
Of The Horseshoe



Mr. Willcox, Tuesday announced his candidacy for the nomination of Clerk of Court for Moore county. Prof. Clyde Kelly, of Cameron, made his announcement some weeks ago. Henry Graves of Carthage also makes his announcement this week.

## CAMERON OPTIMISTIC COMING TAX ELECTION

### Thinks Opposition Gives Way As Time Draws Nearer

Opposition to the County-wide Plan for our public schools seems to be giving way and the chances of carrying the election for this important measure seems to be improving as the election draws nearer.

At first a great many wild and unfounded assertions were made by persons who were not familiar with the facts and who drew upon their imagination for arguments against the measure. A great many good people allowed themselves to be influenced temporarily by the extravagant statements of these self-appointed leaders of the opposition. But in all the volume of criticism nothing constructive has been offered, and no better plan has been presented. The sober common sense and patriotism of the conservative, fairminded men and women of the county will come to the rescue of the hundreds of children who are pleading for an equal opportunity.

Most of our people recognize the fact that a well-trained intelligent citizenship is our greatest asset, and that to continue to condemn a large part of the children to inferior school advantages will not only be a great injustice to those children, but also a great economic mistake.

In some of the towns where, on account of conditions peculiar to those communities, a nine months' term is a necessity, the fear of consequences that would result from reducing the term to eight months, has caused considerable opposition. We are confident that a satisfactory solution of this problem can be worked out, and

(Continued on Page 8)

## SOUTHERN PINES STANDARDS HIGH

### Employs Chemist for Milk and Water Supervision

Southern Pines has taken one of the most progressive steps made by any small town in North Carolina in a long time. Last summer a new water plant was brought into use, and for a time the water was slow in clearing up and coming to standard. The town commissioners got their heads together and concluded the thing to do was to secure a competent chemical engineer and put him on the job permanently, and L. L. Hedgpeth, formerly in the Thomasville water plant, a graduate of State College chemical engineering department, was secured and given charge. Mr. Hedgpeth is a man with a good record at State and also at Thomasville where he has been at work, and he has been proving his ability since coming to Southern Pines. He commenced with a study of water conditions in the town, and soon found that a slight acidity prevails in the waters of the Sandhills and that the acid in the pipes tends to precipitate iron and that while Sandhill water is normally quite free from the bacteria of disease it has a tendency to acid and iron which must be disposed of in order to provide the character of water that is needed. This is more particularly the case where the water comes from a surface reservoir than where it is from springs. So Mr. Hedgpeth proceeded to precipi-

(Continued on Page 8)

## LEONARD TUFTS NOT FOR NEW SCHOOL PLAN

### Thinks School Tax and Management Should Be Strongly Localized

The Pilot last week seems to have given a wrong idea to Leonard Tufts' position on the school situation for he is not favorable to the scheme. He thinks the school tax and management should be strongly localized—each community handling its own problems and that each community should decide how much tax they are able and willing to pay and that while the richer sections of the county should be taxed to partially support the school districts of the country sections it is unjust to do this if those districts that have already voted extra taxes will be unable to maintain as good schools as they now have, and he is convinced that the special schools will not be as good under the proposed plan as they are now.

As to some readers his talk at the Kiwanis last week was not as explicit as might have been in The Pilot last week this further statement is made to make his attitude clear.

Tom Tarheel says every time he tries some new idea in good farming, some fellow laughs at him.

CHARLIE W. PICQUET



Governor McLean appointed Mr. Picquet to organize chorus of singers to represent North Carolina at Sesqui-Centennial at Philadelphia on July the 4th. Mr. Picquet is well fitted for the job.

## ARRANGING TO CARE FOR SHRINERS MEET

### Pinehurst Looks for Big Convention of Red Hats In May

With the end of the tournament season approaching at Pinehurst the spring finds a succession of conventions scheduled up until the middle of May. The biggest of these will be the gathering of Oasis Temple of the Shriners at Pinehurst May 13 and 14, at which an attendance of probably three thousand people is expected. As Pinehurst is close to the border that separates the territory of Oasis from that of Soudan many visitors will be present from the eastern section of the state to witness the various ceremonies and to have a glimpse of Pinehurst in its spring attire and sports.

Monday night the different local committee having arrangements in charge met at the Pinehurst Country club and laid the plans for the meeting in May. The officials of the Temple indicate a large number of

(Continued on Page 8)

Aberdeen, N. C.  
April 13, 1926.

The Pilot,  
Vass, N. C.  
Gentlemen:

With apologies to the writers of a few very excellent articles on the subject, and I would like to cite, apropos the coming school election: Job 38:2.

J. McN. JOHNSON.

Editor's Note:—The Bible verse referred to, reads as follows:

"Who is this that darkenth counsel by words without knowledge?"

## JUDGE WAY BUYS KNOLLWOOD LANDS

### Increases His Holdings By Another Five Acres

Judge W. A. Way has made an important purchase at Knollwood village. It exceeds five acres in extent. The location is at the crossing of the Midland and the Carthage roads and gives the Judge everything on the top of the hill on the southeast side of the Midlands road not previously sold. The new purchase adjoins his other property, formerly the Hudson tract, and gives hm practically the entire hill top fronting on the golf courses beyond Major Nettleton's house.

Judge Way is the most important individual holder of Knollwood village property. He is also the most conspicuous developer. When asked his object in buying this additional acreage he simply said that Knollwood frontage looks cheap to him. He regards the Knollwood location as the finest place in the world to build a home, and he figures that where land can be bought for moderate acreage prices it is a certain profitable investment. He argues that the man who wants to build a home in this excellent location will willingly pay more for a sufficient frontage than any price that has been asked yet, for the cost of a building site is the small part of the cost of the building of a house.

Judge Way says many people gladly pay for building sites in small com-

(Continued on Page 5)

## COMMISSIONERS PROCEEDINGS

### Miss Eifort to Investigate Several Needy Cases

The Commissioners met April 5, 1926. All members of the board were present, D. A. McLaughlin, chairman, M. C. McDonald and John Wilcox.

Minutes of last meeting read and approved.

On motion it is ordered that Miss Eifort investigate the needs of Patsy Matthews and Exie Matthews, who have only received one half of the amount allowed them on June 2, 1924, and make a satisfactory settlement.

It is ordered that the real estate value of H. H. Fry, administrator, be investigated by Mr. Bell.

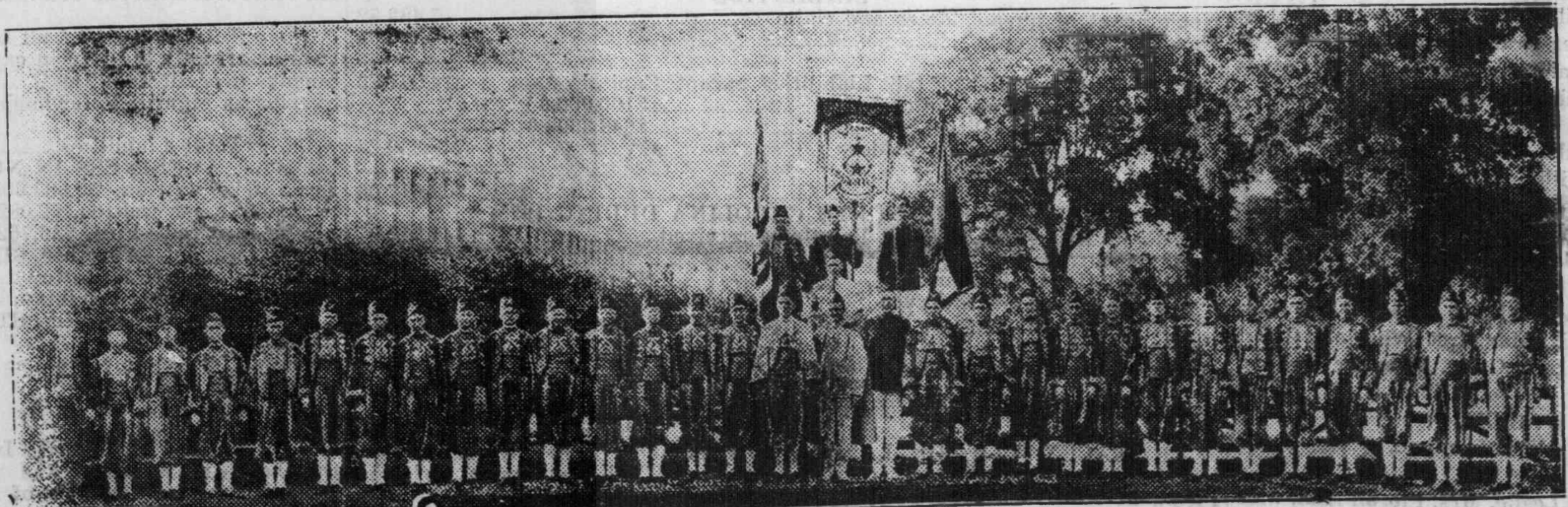
It is ordered that A. R. Morris be relieved of all tax on valuation in excess of \$200 on lot in Jackson Springs on account of House being burned. Duplicate of order of January 7, 1924.

On motion it was ordered that the valuation on stock of goods, S. Shears, Sandhills township, be ordered to \$5,700 on account of error in listing.

It is ordered that the family of

(Continued on Page 4)

### OASIS TEMPLE PATROL



Oasis Temple Patrol which will take part in the Shrine ceremonial at Pinehurst, May 13 and 14.