

MARKET CONTINUES STRONG

On All Grades of Tobacco in Our Warehouse
Wednesday's Sale Average 29 1-2

All of Our Customers Have Been Satisfied

Prices on Higher Grades Advancing Rapidly

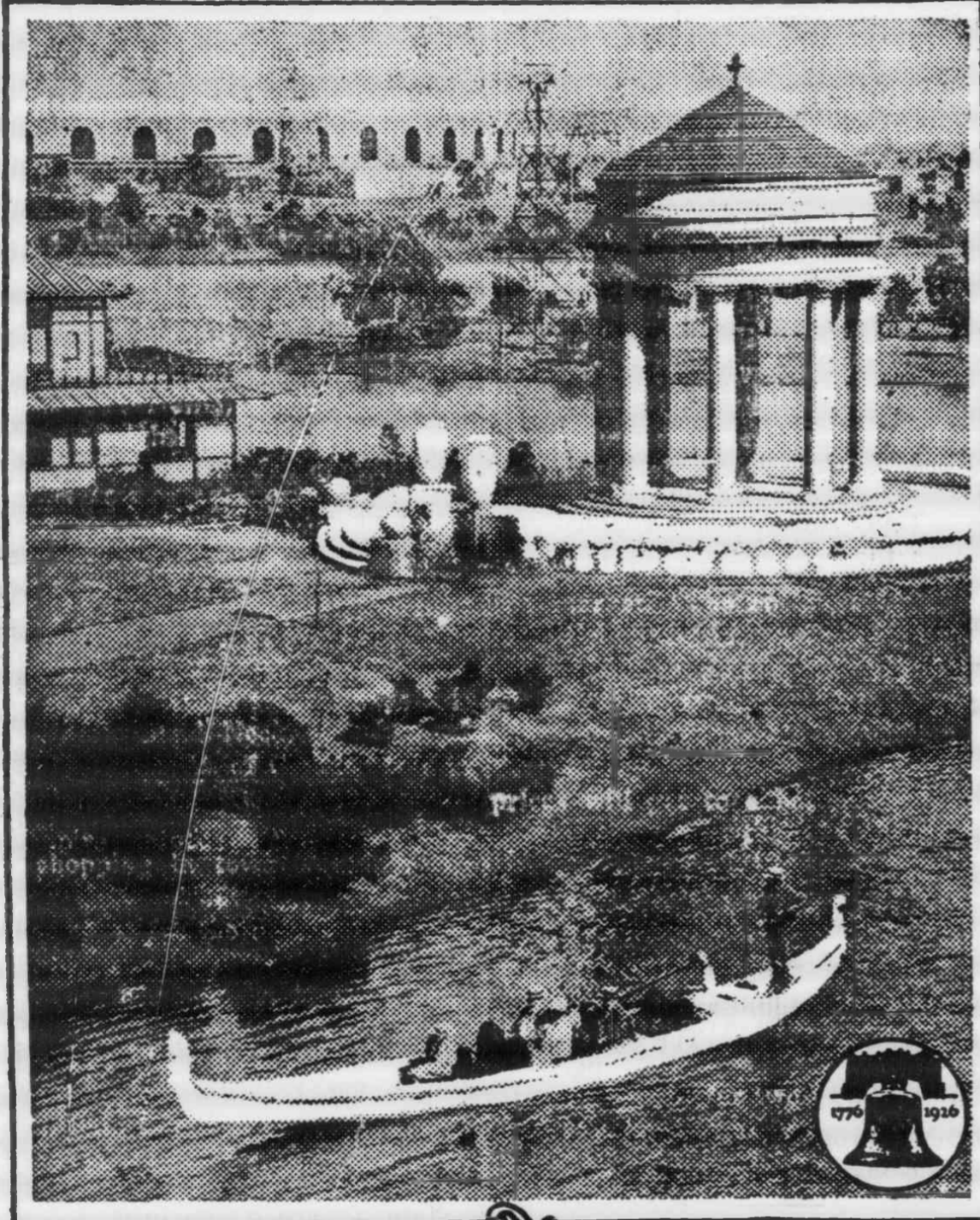
We Strive Always for the Top Prices on Each Pile

Your Business and Influence Appreciated

B. B. Saunders Warehouse

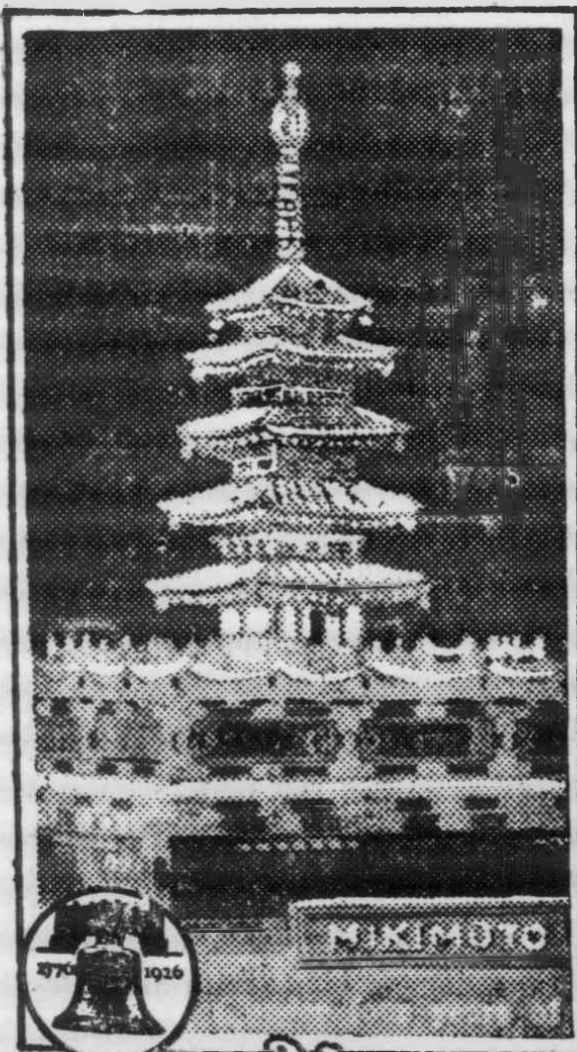
Aberdeen, North Carolina

ON THE SESQUI LAGOONS



Here are Americans, visitors to the Sesqui-Centennial International Exposition in Philadelphia which celebrates the 150th anniversary of the signing of the Declaration of Independence, riding about the lagoons in an Italian craft, a gondola, from which they view the buildings and displays from many lands. In the distance can be seen the mammoth Sesqui Stadium; to the right is the signal tower of the United States Coast Guard building and exhibit, and to the left is one of the Japanese pagodas which dot the exposition grounds. The Grecian pavilion is one of the permanent structures on the site before the city government decided to build the Sesqui at the front door of the great Philadelphia Navy Yard. The Exposition continues until December 1.

Millions in Pearls



This pagoda, a part of the Japanese exhibit at the Sesqui-Centennial International Exposition in Philadelphia, celebrating the 150th anniversary of the signing of the Declaration of Independence, is made entirely of pearls and its value exceeds \$1,000,000. The exposition continues until December 1.

SANDHILL SIXTEEN TO VISIT HAMLET

(Continued from page 1)

pression as to what it's all about: "Hamlet belongs to the Sandhills. We are dyed-in-the-wool Sandhiller and we trust that the linking up of the Pinehurst, Southern Pines and Hamlet Theatres under one name will bring our communities closer together and that we may all become better acquainted with each other until we all become one community in spirit. We desire to be instrumental in bringing the best of entertainment to the Sandhills area, in our small way, help to make these Sandhills the best section in the world to live in."

ROBINHOOD'S BAND WILL LIVE AGAIN

Robin Hood's band of archers of Sherwood Forest will live again at Pinehurst this winter. The Pinehurst Archery Club was recently organized with Norfleet P. Ray as secretary of the organization. Three acres of land about two blocks from the Carolina hotel and near the rifle range have been seeded and a cozy log club house has been constructed. The front room of the cabin will serve as a redoubt for archers, while lockers will be installed in the rear. Although preparations are still going forward at Pinehurst, and the resort opening is yet a month off, many people have shown their interest in the new archery club and the sport promises to play a major role in the list of winter attractions in the Sandhills. Negotiations have been underway with an archery professional in Boston, who is expected to arrive here in the near future as instructor.

Women are taking to archery in Pinehurst as readily as men, and each day sees a large number of the fair sex demonstrating their skill at a range of 30, 40 and 60 yards. The

men use bows six feet long and drawing about 45 pounds, and their arrows are 28 inches long. Women prefer a bow six inches shorter with arrows 26 inches in length.

The Pinehurst Archery Club will open their tournament season next week, and frequent competitions will

follow through the winter. The mid-winter archery tournament will open Monday, January 3 and run four days.

Information regarding membership to the Pinehurst Archery club may be secured by applying to Norfleet P. Ray, secretary.

Test and Compare



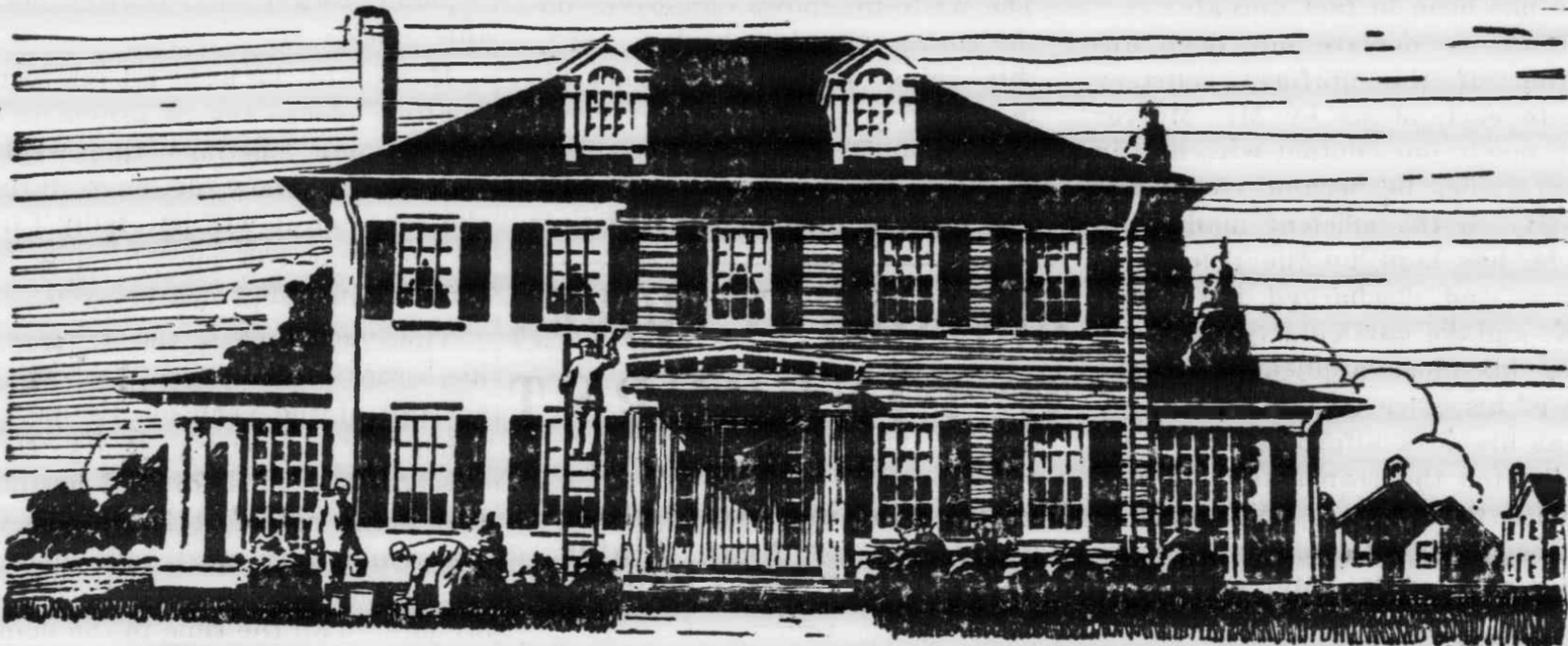
Get a sample shingle—check its advantages of design and protection. Put it to the 6 Daring Roofing Tests to prove its quality. Know why before you buy—it will give the utmost in roofing value.

the Original
BEAVER VULCANITE
HEXAGON SLAB
With Any Shingle Slab of Hexagon Pattern

Colin G. Spencer

Carthage,

North Carolina



Paint your house with

THE above picture shows that one gallon of SWP house paint covers 360 square feet of surface, two coats. Ordinary paint covers from 200 to 250 square feet. That is the first saving. SWP, though heavy-bodied, flows easily and evenly, thus cutting down the time required to apply it. That is the second saving.

SWP outlasts two or three paintings with ordinary paint, saving the

SWP



cost of materials for repainting and also saving the labor cost which is about 75 per cent of the total expense.

In buying paint it's the area a gallon covers, not the cost per gallon, that determines its economy. We carry a complete line of SWP. If you plan to paint your house, let us help you.

YOUR NAME
ADDRESS

SHERWIN-WILLIAMS

PRODUCTS

Pinehurst Warehouses Inc.