

# Revolutionary Development AT SOUTHERN PINES COUNTRY CLUB

**The Golf Course Extended Over the Hills and Streams, and Into the Most Rugged Section of the Sandhills.**

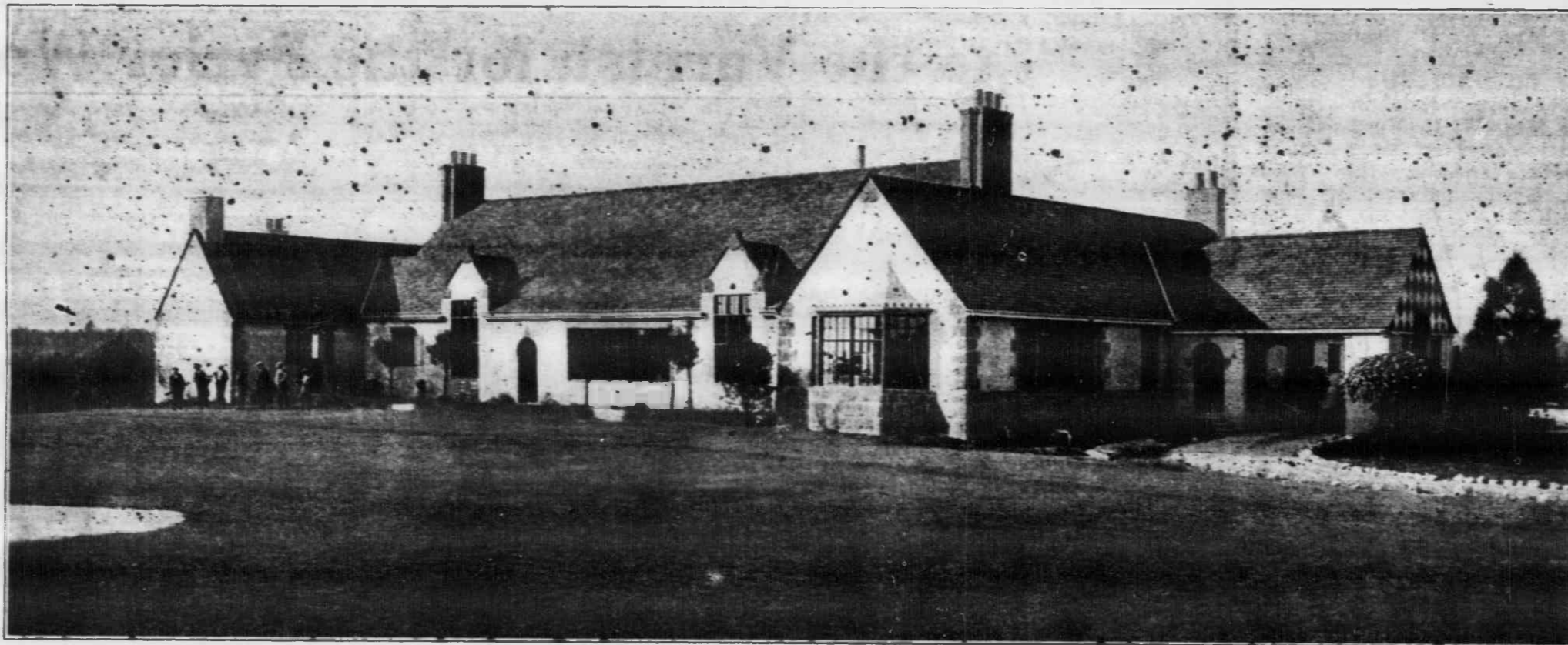
**Summit of Shaw's Ridge Crowned with Greens and Fairways and the Valleys Opened to the Enjoyment of Visitors to the Park.**

**Plans in Progress that will Provide Two 18-Hole Courses and One 9-Hole Course---Roads, Drives, and Walks through the 550-Acre Tract of Land, and Building-Sites Flanking many Fairways and Drives.**

From the day of its inception the Southern Pines Country Club has been a recognized factor in the prospects of the Sandhills, and from the beginning the men who were in at the start dreamed a dream of a playground there that should be one of the biggest attractions in bringing visitors to the State and in affording enjoyment and social contacts that would help to carry out that hope of making in this community one of the most delightful places on earth to live.

But it takes money and time to develop golf courses, and to make big parks and to build roads, and carry out landscape schemes essential to the desired ends, and to build dams and improve streams, and to select spots where groups of houses may be built, and probably a hotel site in suitable place to work in with the general idea. So the Southern Pines Country Club had to go according to its abilities. But it has been an active influence in the growth of the Sandhills, and Southern Pines is a testimonial to its stimulus. Without the Country Club this would be a different neighborhood, for golf is one of the principal cards that make the Sandhills the success they are.

The positive and substantial growth of Southern Pines commenced when the Country Club established its permanence. The town at once proceeded to grow up to the program of action the golf facilities warranted, and now it is no longer something to foster the



growth and broadening of the village, but something to take care of that continuing growth, for the demands of the increasing numbers of visitors and guests require that more means for providing for their wants shall be steadily forthcoming.

For that reason the Country Club has marked out an ambitious project, which starts with the purchase of much more ground, giving at the present about 550 acres, and the expansion of the number of holes, with a continuing scheme that looks to the future as well as the present.

The Fates that picked the location of the golf courses at the beginning picked wisely, for the original site of the club was immediately adjoining a big reserve of territory immediately south and east that permits expansion of the courses and into a topograph that is one of the most

interesting in Central North Carolina. The hills are rugged little mountains, giving all the charm desired to a climb or a walk in the pursuit of the game or in a ramble among the pine woods, where walks and roads, and springs, and forest foliage suggest the primeval.

Now it takes money to carry out a big parking and playground scheme like this. So because there is no place in the world more delightful to live than on some of the knobs or in some of the coves within the boundaries of the Country Club, building sites to a limited number have been dropped in here and there among the fairways and drives, and these will be offered buyers and home makers and from the funds derived the further expansion and improvement of the grounds will be carried on.

Already a series of drives has been opened, starting at Indiana avenue, in Southern Pines, winding in various ways out to the Bethesda road near the old Ray Mill property, across the stream in places, back by way of the Morrison and Grover neighborhoods, in past the Highland Pines Inn, with intersecting roads and walks.

Already also homemakers have been securing building sites, and several houses are in course of construction or planned.

Harry W. Gage, of Rochester, N. Y., has completed the first house, located near the club house on one of the new

roads, and it will soon be ready to occupy.

John G. Nichols, of the Page Trust Company, of Aberdeen, has secured a location not far from the Gage home, and is preparing to build that he may occupy his house in the winter.

On the summit of one of the highest knobs, overlooking the whole horizon near the green on course 4, F. F. Travis, of New York, has picked a location and is figuring on building plans. His location is beyond the Olmstead group of houses, west of the Grover road, and not far from the Robinson development.

At the extreme east of the Country Club boundary, F. H. Robinson, of Peconic, N. J., has secured several acres, and is building one of the ambitious houses of the Southern Pines section. It is on the rim of a bluff looking down one of the fairways, with a view of much surrounding creation, and it will be one of the show spots of the neighborhood. Mr. Robinson is so much pleased with his find in securing that location that he has started the second house in the same vicinity, and he intimates that he has some friends that may some day want to be neighbors and he will have room for some of them to spread out.

Across the border on adjoining land James Wadsworth is preparing for a house on another group of the knobs.

## The Roads Opening for Travel

The development is making such progress that many of the roads are now open for travel for those who like to see what is going on, and visitors are welcome at all times.

## BUILDING SITES FOR SALE!

It is the hope of the Country Club that it can dispose of some of the fine building sites within the various boundaries and thus procure funds to carry on the ultimate development of the project that is planned. Here on these knobs are sites that cannot be surpassed by anything in the Sandhills, and prospective homemakers are invited to look over the area and become acquainted with what we are offering. Locations may be procured directly from—

# SOUTHERN PINES COUNTRY CLUB

## SOUTHERN PINES, N. C.

Or from any of the Real Estate Agents of the section.