

Is a Paper Devoted to the Upbuilding of the Sandhill Territory of North Carolina

VOL. 9, NO. 11.

FRIDAY, FEBRUARY 15, 1929.

VASS, N. C.

PINE NEEDLES INN KEYSTONE OF KNOLLWOOD

Classic Tudor Structure Central Figure, with Golf Course Surrounding It

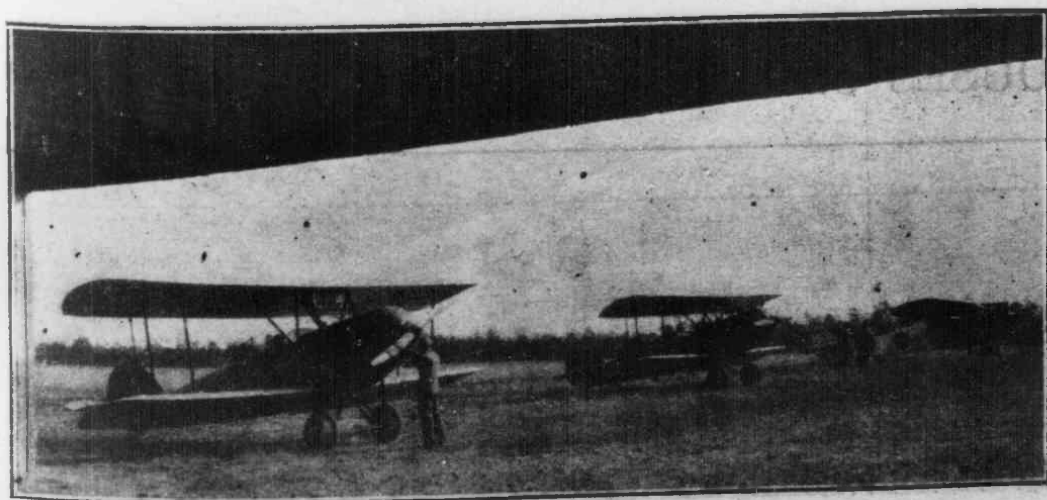
The central figure in the Knollwood development is the Pine Needles Inn. It is situated in the heart of one of the most interesting eighteen-hole golf courses that Donald Ross ever built. The topography of the area on which the links are laid out is such that Mr. Ross could give his imagination full scope, which he did, and the result is one that gratifies him sufficiently to induce him to build a fine big house on the Knollwood Heights, just overlooking Fairways No. 1 and No. 18, the start and the finish of the Pine Needles course.

The Inn is a classic Tudor structure of five stories, fire-proof and modern, built of steel frame and brick, with all the conveniences that give it a front rank among the hotels of the South. Its surroundings are the golf links, and with them numerous groups of buildings sites, which are already going into the hands of buyers who are building a high class type of homes. Pine Needles is in easy reach of Pinehurst, Southern Pines, and the other adjacent villages and is but a few minutes run from the golf courses at those points, where seven other courses are available, while across the Midland road is another course at the Mid Pines club. On the Barber estate, adjoining Knollwood Heights, just to the west of Pine Needles, is another attractive course in process of construction, which will give in all ten courses in the immediate vicinity. It is needless to say that such a number of golf courses in the vicinity, of the type that they are, makes this a prominent center of golfing world. This is the heart of the big tournament life of the United States, more big contests taking place in Pinehurst and the neighboring golf fields than in any half dozen other places in the South. Pine Needles Inn is a Pinehurst hotel, under the management that has made Pinehurst famous, and it is of the Pinehurst character of management and excellence. It was opened for the first time in January, 1928, and in a short time had filled to capacity. It's fame had gone out before the doors were swung back for its arriving visitors.

Pine Needles Inn affords all the comforts and conveniences that visitors or residents at Knollwood Heights may desire, and the courtesies of the Pine Needles golf course are at the pleasure of Knollwood Heights residents. Fairways No. 1, 16, 17 and 18 flank the Knollwood Heights building sites. The inhabitants of the buildings on a considerable portion of Fairway Drive, on Knollwood Heights and on Short road and Grove drive, can watch much of the game that is in progress, while many of them will have the fairways as their big lawn.

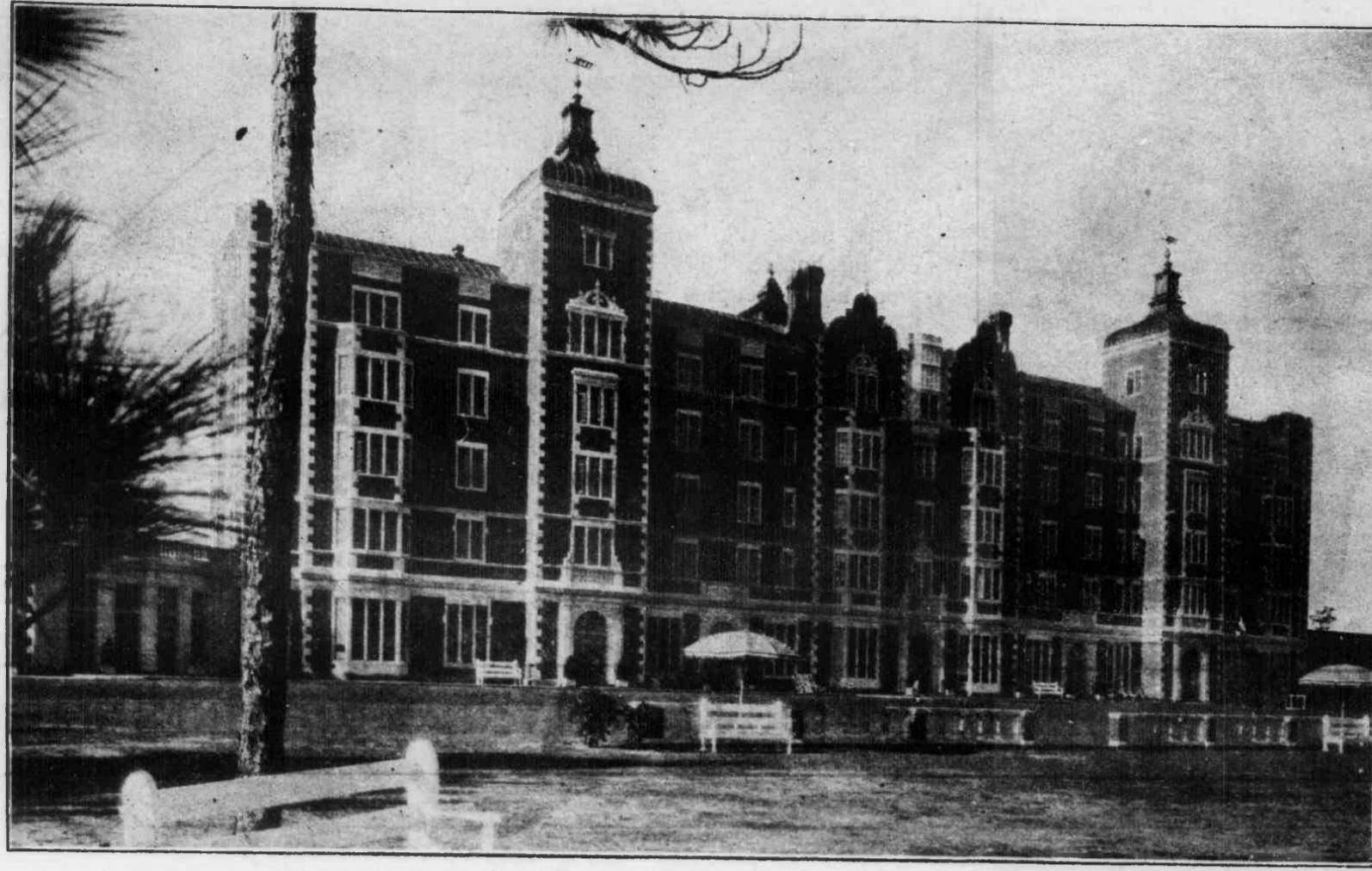
KNOLLWOOD AIRPORT WINS PRAISE OF VISITING PILOTS

The new Knollwood flying field has recently been officially recognized and approved by the United States Government. It has been widely used this winter and has earned the praise of all pilots landing on its wide expanse of smooth Bermuda grass. Lloyd Yost, well known pilot, makes his headquarters there, maintaining several planes for use of Sandhills guests. Many parties from the north have dropped down on the field for week-end stays, and that the field is a distinct asset to the Knollwood colony is already an established fact.



Some Visitors At The Flying Field

THE NEW PINE NEEDLES INN



Glenna Collett Sees Knollwood Central Figure of America's Playground

National Champion Calls Pine Needles Golf Course Her Favorite Because of Beauty and Home Atmosphere

By Glenna Collett

The Pine Needles and its golf course has become the nucleus of a new development having most of the characteristics of a Sandhills resort and a few of its own. It is the beginning of a growth that will eventually link Pinehurst and Southern Pines. Although I am interested in this growth and look forward to it with pleasure, simply because one always likes to see the seeds that one has planted bear fruit, I hate to think of the time when Knollwood will be so large that it will perforce lose some of the intimate, personal charm it now has. More houses will be built each season, and more golfers will ply our course until it will be almost impossible to know all the residents.

At present, Pine Needles is more like an informal club well on the way to being entirely independent of the other Sandhills communities for its sports. Tennis courts, an archery range, and a children's playground are under construction; we have our own stables housing some fifteen horses and miles of bridle trails; and Donald Ross himself considers this course the best piece of work he has done in this region. All these facilities are dropped down in a natural setting of woods and lakes that give a pleasant sense of quiet and isolation not to be found in most resorts. The fairways stretch between rows of giant pine trees over rolling country making 18 holes that can not be matched in this section for beauty and interest.

I have come to prefer the new Pine Needles course to any of the others in the Sandhills primarily because of its beauty and its associations that make it seem like home to me, and more than that, because of its technical advantages. It can be compared favorably with any links in the country for its layout. Its traps and hazards are better placed than those of the Pinehurst courses. No. 4 is an exceptionally fine short hole and will doubtless some day be as famous as the Cathedral hole of which, with its girdle of pines and water, it is suggestive. The fairways are in excellent condition because they have not had excessive use. The North Carolina soil lends itself readily

to the making of a smooth footing and good lie for player and ball. The grass used is the Creeping Bent, grown with such success on the fairway at Cuba and Nassau. It grows

THE LURE OF KNOLLWOOD

Wherever the language of golf is spoken, the names of Donald Ross and Glenna Collett are known.

Donald Ross is the leading golf course architect in America.

Miss Glenna Collett, America's women's national champion, makes her winter residence at the Pine Needles Inn.

Donald Ross laid out the Pine Needles and all seven other courses in the Knollwood vicinity. He is just completing his home on Knollwood Heights.

SCENE DURING RECENT MID-SOUTH OPEN



Miss Glenna Collett, National Women's Golf Champion, Miss Louise Fordyce, Youngstown, former Ohio State Champion and Miss Elizabeth Gordon, professional golfer of Providence, R. I., putting on the third green of the Pine Needles course, with the inn in the background

quickly in long streamers which spread outward to cover up the bare spaces. The greens are softer than those on the Pinehurst courses and therefore more like grass greens. It is possible to use a pitch shot with greater safety. Northerners playing their first game on sand greens find it easier at Pine Needles. I myself prefer the pitch shot because it makes a prettier game to watch and is more sporting than the approach which is rolled up with a midiron or a putter.

I think the women who played here recently in the Midsouth Open will agree with me in most of what I say and many of them have been won over to playing here exclusively while in the Sandhills. Aside from the advantages of the course, they liked the quiet and homelike atmosphere of the hotel where they found that a special play is made to individual needs and whims.

Knollwood has drawn around itself an atmosphere of quiet refinement that I hope it will always retain, no matter how far its boundaries may be pushed. Even in passing through one absorbs some of this spirit from its broad winding driveways, its gracious homes, and the dignity of the Pine Needles Hotel. These characteristics have been achieved through the careful thought and planning of the backers of Knollwood and will draw an ever-increasing crowd of people who are looking for just such an environment.

Knollwood Heights New Development, With Inn and Houses but Year Old

Pine Needles Opened in 1928, the Center of Rural Group of Attractive Homes Among the Long Leaf Pines

GROWTH HAS BEEN REMARKABLE

The Knollwood Heights development enjoys the distinction of being absolutely and wholly new. Pine Needles Inn, about which the whole settlement is created, was built in 1927, opened in 1928 and is now in its second season. The first house on Knollwood Heights in this new movement was built last spring. Two houses nearer the Midland road had been built a couple of years earlier, but the Knollwood Heights settlement is not yet a year old. Making the streets and laying water and sewer lines was commenced as the Pine Needles Inn was nearing completion, and under high pressure has been going forward ever since.

Knollwood Heights is therefore modern in every particular. The houses are equipped with every modern device. They are built with modern material, and in accordance with all modern practices. It is a neighborhood that is practically alone in its thorough newness, freshness and modern adaptation. It was built in the woods, so there are no questionable quarters of the community. The entire development is high character, no dilapidation, no poverty row, no objectionable feature or neighborhood. A clean slate from the forest to the new homes. In this respect it is unparalleled, except for the Mid Pines

settlement directly across the state highway, and which is a slightly older companion of Knollwood Heights. Mid Pines is also new, and modern. With the exception of one house which Judge Way substantially rebuilt, there is not an old house in the Mid Pines area. Mid Pines and Knollwood Heights are two units in what will ultimately be the definite Knollwood Village. But it will be a different village than any other, for it will remain in a rural group of homes on ample area, as every location that is sold is measured by acreage and not by feet. Knollwood building sites are not town lots. They are home sites for country homes, and laid out with the purpose of making in the Knollwood area one of the most pleasant home places on the globe.

Sandhills Climate Ideal Year 'Round

The climate of the North Carolina Sandhills is about the most agreeable all-the-year climate on the continent. It avoids the extreme heat of summer and the disagreeable cold of winter. Tempered by the proximity of the ocean in the east, sheltered from the storms of winter by the high mountains of the western part of the state, favored by a large proportion of sunny days, winter weather rarely shows a lower temperature than 20 degrees, while the summer extreme is not often much above 90. The blizzards of the West are turned northward by the mountains, and are practically unheard of in the North Carolina Sandhills. Sunstroke in summer is unheard of. The sandy soil exerts a modifying influence in tempering both heat and cold, while the soft blanket of pine forests over a large part of the region retains the warmth of the earth in winter, breaks the raw winds that cannot penetrate the thick pine covers, and acts as a balance in all the climatic phenomena. This is the children's paradise, as they may be out of doors almost every day of the year, and that is also a great stimulus to the older folks who are beginning to feel the rigors of winter in the North or to feel discomfort in the warmer days of summer where the thermometer is less favorable than here.

PHOTOS BY HEMMER

All photographs in this Knollwood Section of The Pilot are by Hemmer, Pinehurst photographer.

MID PINES CLUB PIONEER IN NEW DEVELOPMENT

The why of the Sandhills resorts is logical. The whole movement is an evolution. John T. Patrick would have established here a big sanatorium, and James Tufts proposed to create a community in which invalids might enjoy longer life and self-sustaining prosperity. But medical men advised against the assemblage of invalids in any place in one big colony, and that idea was abandoned. Then Mr. Tufts turned to the plan of

making a pleasant place in winter for folks to escape to from the North. That was a workable proposition. It was a swift movement from its inception, and when he called Donald Ross to undertake to localize the new game of golf in this section the Sandhills found its future guaranteed. Golf was just then attracting attention, and with golf to be found in the winter months when it was desirable to get away from cold weather the

combination of mild climate and winter sport caught the attention of people everywhere. So came Pinehurst and Southern Pines.

In a few years Pinehurst found that it must expand beyond the village boundaries, and Mid Pines, backed generously by Pinehurst, became a factor. Mid Pines is an organization of individuals, with a half million dollar club house including its equip-

(Continued on page 2)



THE ATTRACTIVE MID PINES CLUBHOUSE on Midland Road, the half-million dollar winter home of an exclusive membership, is surrounded by one of Donald Ross' famous golf courses and directly across the double road from the Pine Needles Course