

To Open November 20th For Its 19th Season



The Highland Pines Inn, on Weymouth Heights, Southern Pines.

877,000 Children Now Enrolled in the Schools of North Carolina

U. S. Senator



JOSIAH WILLIAM BAILEY of Raleigh

Lambeth's Majority Nearly 12,000 Votes

Largest Ever Received in District—Four Counties Carried by Spencer

Walter Lambeth's majority for Congress from the Seventh district was about 12,000—the largest ever received in this district, says the Rockingham Post-Dispatch. The next largest was by the late W. C. Hammer in 1924, when it was about 7,000. The approximate figures.

Lambeth's Majorities:

Davidson	2250
Anson	2000
Davie	200
Hoke	1000
Lee	1200
Montgomery	400
Moore	500
Richmond	2305
Scotland	1700
Union	1800

Spencer Majorities:

Wilkes	750
Yadkin	700
Randolph	155

Seaboard Financial Problems Up Again

New York Investment Houses Asked To Assist in Readjusting Capital Structure

Steps toward solution of the financial problems of the Seaboard Air Line Railway Company through readjustment of its capital structure were announced this week by W. H. Coverdale, chairman of the board.

He said Dillon, Read and Company and Ladenburg, Thalman and Company, New York investment firms, had been invited to assist and would be in effect "readjustment managers" in working out a plan in cooperation with the board of directors and committees representing the holders of the road's stock and bonds.

Some action was necessitated by the sharp drop in the income of the railroad, which operates 4,500 miles in the South. The business depression and general decrease in railroad traffic has resulted in such a shrinkage of revenues that the road expects to end the year with a substantial deficit after payment of fixed charges. It has a funded debt of \$177,132,000, of which \$11,406,000 in bonds and notes is due next year. The road passed the semi-annual interest on the 5 per cent adjustment bonds August 1, 1928 and February and August, 1929, after failing to earn the interest.

Daily Attendance Figures Also Show Increase, Says State Superintendent

"Both enrollment and attendance in the public elementary and high schools of the State for 1929-30 show an increase over that of the preceding school year," declared State Superintendent of Public Instruction, A. T. Allen in a statement to the press. "Although this year's increase did not establish any new records, there are a number of reasons for the improvement in this respect," he continued.

Last year, there were 866,939 children enrolled, or 11,057 more than the number for 1928-29. This year's addition is less than half the increase of 1927-28, when there was a gain of 24,627, a three per cent increase over the 1926-27 enrollment.

The present total enrollment is divided, according to the statement issued by Supt. Allen, into 607,344 white pupils and 259,595 colored pupils. In other words, 70 per cent of the total school enrollment is white and 30 per cent colored.

School attendance, or the average number of enrolled pupils attending school daily, has also increased. During 1929-30 there was an average daily attendance of 672,895 pupils, both white and colored. This number represented an increase of 28,140 over the attendance for the preceding year, and lacked only 714 reaching the record year of 1927-28, when there was an increase of 28,854 pupils in average daily attendance. The annual percentage increases in attendance for the past several years are shown by Supt. Allen to be as follows: for 1925-26 1.6 per cent, for 1926-27 1.0 per cent, 1927-28 4.5 per cent, 1928-29 .64 per cent, and for 1929-30 4.36 per cent.

Attendance Good

Out of every 100 pupils enrolled last year 77 were in average daily attendance. This record, the highest yet made, is just 4 more than in 1924-25, or an average increase of less than half a pupil a year. Among the schools for white children the percentage in attendance is 80, and for colored pupils it is 72; but the colored improvement in attendance for the five-year period has been slightly greater than that for the white race.

This increase in school enrollment and attendance for 1929-30 is, according to Supt. Allen, due to several causes:

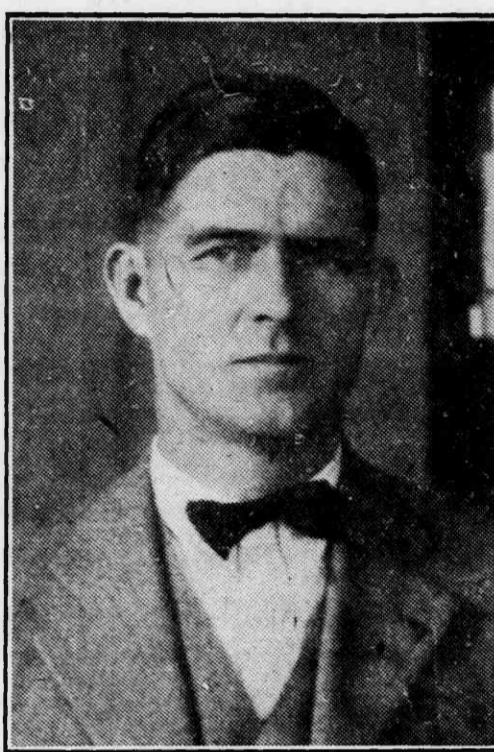
First, during 1929-30, there were fewer epidemics of contagious diseases than in previous years. During 1928-29 contagious diseases were prevalent in many sections of the State, and consequently the increase in school attendance for that year was less than for 1927-28.

Second, many counties for the first time operated a split term, closing the schools after running a month or six weeks to allow the children to help with cotton picking and other work on the farm, and then reopening them again after this work had been finished. In this way the number of absences were reduced, and as a consequence a higher attendance was maintained.

Third, in many systems a greater emphasis than ever before was placed upon the matter of improved school attendance. Many superintendents put on attendance campaigns, and the State Board of Charities and Welfare through its division of school attendance stressed its importance.

And lastly, the economic depression began to be felt and many of the older boys and girls who were formerly employed found themselves without jobs, and so returned to school.

Re-elected Sheriff



CHARLES J. McDONALD of Carthage

Ralph Ray, Colored, Killed on Route 50

Struck by Car Driven by Dr. Edwards While Repairing Tire at Roadside

Ralph Ray, colored, of Aberdeen was killed last night when struck by a car driven by Dr. E. C. Edwards, of Pinecrest Manor, near the Johnson Slab Cabin on Route 50 between Southern Pines and Aberdeen. Ray was fixing a tire on his car alongside the road and is said to have suddenly stepped in front of Dr. Edwards' car as it was about to pass. He was carried to the Moore County Hospital at Pinehurst, but died soon after arrival there. Ray was a part-time employee of the Southern Pines street department.

Moore County Fair To Be Held Next Year

Carthage Legion Post Votes To Again Sponsor Agricultural Exhibits

The success of its first effort in the way of staging a Moore County Agricultural Fair prompted the Joseph G. Henson Post of the American Legion at Carthage to vote at its meeting last Saturday to sponsor a fair again next year. An armistice Day celebration next Tuesday was also decided upon at the meeting, and a committee was appointed by the post to arrange for the marking of all graves of ex-service men in the Carthage community not already suitably marked. The new post commander, B. C. Wallace, presided at the meeting. C. L. Spence, chairman of the Moore county exemption board, was the principal speaker.

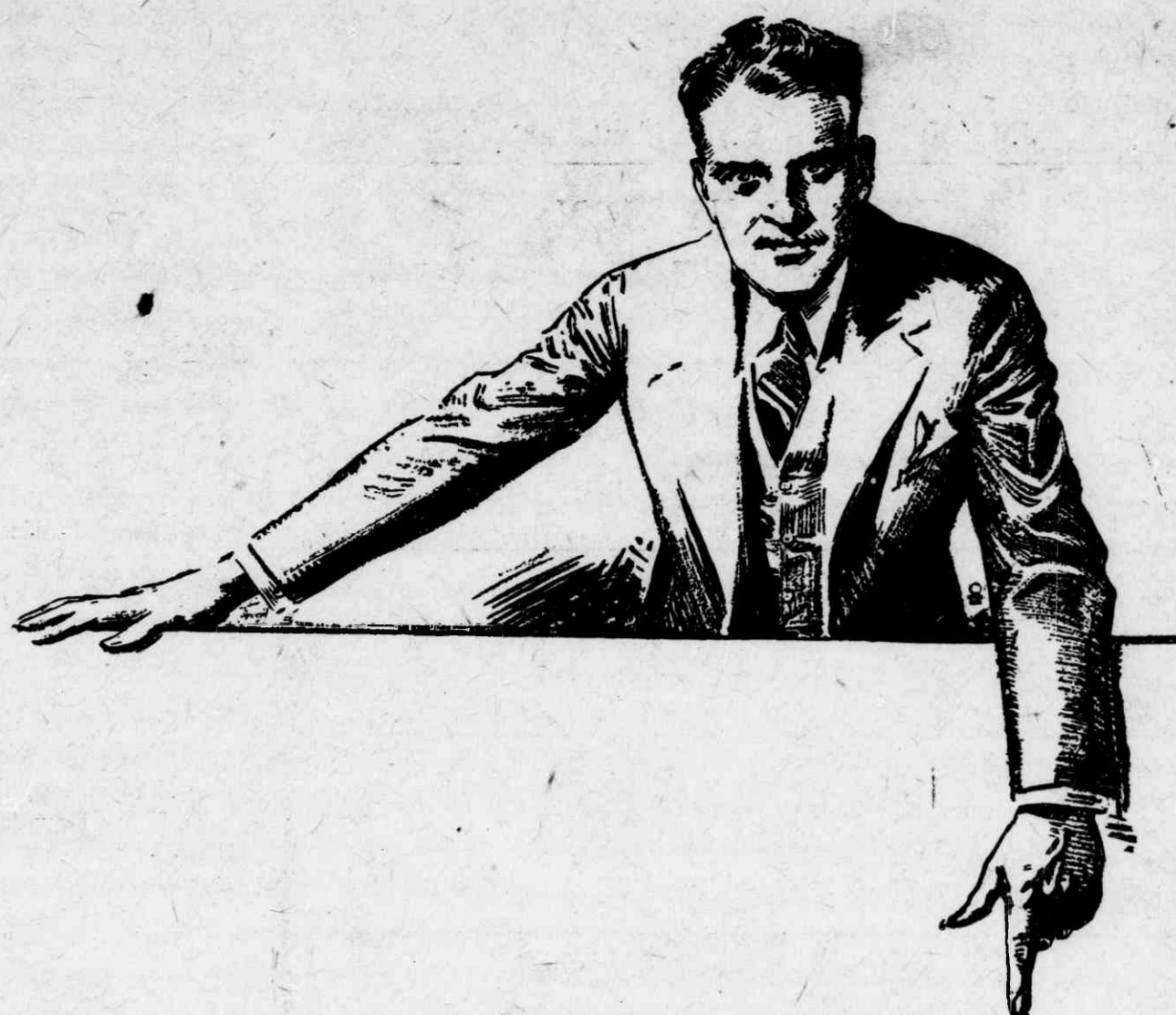
A post auxiliary has been organized in Carthage with Mrs. John Beasley as president and Mrs. R. G. Wallace secretary and treasurer.

MR. NEWCOMB IN CHARGE

I take pleasure in announcing that Mr. A. S. Newcomb has been appointed as the new manager of my property in Market Square, Pinehurst, N. C., effective November 1, 1930.

—MRS. MYRTLE C. TAYLOR Adv.

We guarantee to satisfy you when we accept your order for printing.



Read
the Particulars of
The Pilot's
Big Christmas Club
Campaign
on
Pages 4 and 5
of the
Second Section
in this Issue

