

Judge Way Finds Precocious Plant Among His Orchids at Knollwood

Baby Matures in Nearly Third Less Time Than Ordinary Varieties of Flower

Judge W. A. Way, and his wife, who is as enthusiastic and industrious in the work as he is, may have struck on another decisive advantage of the climatic influence of the Sandhills. They have developed at the Orchid establishment at Knollwood a new seedling orchid which they have named Brasso-Cattleya Cordea-Prowe. This name is not so fantastic as it looks on paper, but it is in keeping with the scientific custom of naming new creations with the help of their parent stocks in order that the people who are familiar with the work may know whence the new varieties have sprung. Just as the Jones or the Smiths or any one else passes along the family name with the addition of a personal name to distinguish one Smith from another.

The creation of a new orchid is not essentially a new thing, for the growers of this wonderful family of plants have brought out many new and fine flowers. In that respect the Judge and Mrs. Way are not excited any more than the ordinary individual is over the arrival of a new member in the household, and this case appears to add somewhat to the refugent peace of the Judge's mental top-loft, for it is a delicate and handsome flower, with many of the good points of its ancestry. But the feature that stands out in this particular case is that the time from the planting of the seed in April, 1926, to the date of blossoming in November, 1930, is little over four and a half years. Ordinarily an orchid takes about six years from planting to blossoming, which indicates that the Ways have brought out a type that is precocious in early blooming or that here in the Sandhills the climatic influences stimulate the early development of the plants to such a degree that nearly a third of the growing period of the plant prior to the blossom has been cut out. If this should prove to be the case it is evident that the Way orchid houses have an inside track on any greenhouse of the North, for to cut the time of feeding and waiting for a plant to come into blossom from six years to four and a half means a big item in the costs of producing the flowers and a bigger return on the work and the investment.

Sand and Sun Help

It is not yet determined whether the new type is simply an oddity in its early habit, but the fact that other blossoms are soon to come from some

Bulls For Guam Pinehurst Ayrshires Leave Here For Cruise to Far-Off Island

Two bulls that have a three months ocean cruise ahead of them, a journey that will take them half way around the world, left Pinehurst today by truck for Hampton Roads, Va., where they start their long sea voyage which will take them through the Panama Canal. Some years ago the United States Government sent a herd of Ayrshires to one of its smallest land possessions, the island of Guam, near the Philippines, as a dairy experiment. Dr. O. E. Reed, chief of the bureau of dairy industry of the United States Department of Agriculture, recently selected two new bulls to join the Guam herd from the herd of Ayrshires of Leonard Tufts at Pinehurst. They are Pinehurst Lucky Masterpiece and Pinehurst Good King. Pinehurst Good King is a son of Pinehurst King Pan, a bull bred by Henry Ford at his old home farm at Dearborn, Mich. The other bull is a son of Pinehurst Masterpiece and Barbara of Beech Hill Farm, which was the highest producing cow in the United States in 1927.

Other new varieties that have been originated at the Way plant indicate that the general influence here in the sand and warm sun justifies the hope that the whole orchid family may be susceptible to the genial conditions, or at least those of the Cattleya or those other genera that form the basis of the some hundred thousand plants at the Way house. The orchid is a remarkable plant, and is of wonderful range and exceedingly numerous in the lineage of its posterity, many thousand varieties of several thousand species existing. It is accepted by florists as among the high royalty of plant life, and like any other royalty it has its eccentricities. It has been cultivated to the highest degree, interesting scientific men since the study of botany, biology, evolution, and every other relation of science to life has been studied, which is one reason why men of studious habit pay so much attention to it.

When Judge Way commenced to grow orchids he undertook the work for the pleasure it afforded. But he

Liquor Manufacturers Have Bad Week Here

Police Pick Up Three Sixty-Gallon Copper Stills and One "Baby Grand"

Officers have been very actively engaged in fighting the illicit liquor business in the county during the past week, and as a result of their efforts, several manufacturing plants have been put out of business, or at least forced to shut down temporarily.

On Tuesday of last week, a "baby grand" outfit was captured near Brown's mill about six miles above Hemp. It was a complete copper distillery of five-gallon capacity. Three barrels of beer, or what Deputy Sheriff Slack termed a three days' run for this little plant, was found. Two white men, Edgar Garner and Frank Garner, made a hasty get-away. Federal officers Harris and Roseland and county officers Lambert and Slack were in the raiding party.

This same group of officers cut down a galvanized distillery of sixty-gallon capacity about four miles below Southern Pines on Wednesday, and destroyed 150 gallons of beer, but did not find the operators.

On Sunday, Officers Kelly and Lambert and Deputy Sheriff Mudd of Montgomery county cut down a sixty-gallon copper outfit near Samarcand, and poured out 100 gallons of beer, fermented ready for distilling.

The best outfit captured in a long time was a sixty-gallon copper distillery which Officers Kelly and Slack located Monday afternoon near Cole's mill on the Glendon road six miles from Carthage. Two-hundred-fifty gallons of beer of the corn meal variety ready to run, was destroyed. The officers did not see anybody around the still.

DEPARTURE DELAYED BY ENGINE TROUBLE

Derailment of a Norfolk Southern locomotive hauling Pullmans from Pinehurst to the Seaboard connection at Aberdeen delayed the departure of a large number of persons from the Sandhills Sunday night. The locomotive jumped the track at Aberdeen and it was 10 o'clock before the 6:45 train pulled out of Southern Pines. The train pulled two private cars in addition to a heavy load of Pullmans.

presently found himself undertaking to grow new plants from seed, and in the joy of his successes he enlarged his buildings until he now has an enormous place, with this single flower as the purpose of his work. The seedlings grew and thrived. Every one of the thousands is catalogued in his record book, with its ancestry, for every plant is propagated as carefully as the highest thorough-bred live stock it. Every seedling in the houses is the result of the pollination of individual plants from the pollen of plants that have been selected for the cross, and the Judge knows the parents of every plant in his place. So when this new flower comes into blossom he knows that its parents were the Cordelia and the Prowe, and that their ancestry of the second generations goes to the Brasso-Cattleya stock, the strain entering the new plant from more than one line. The parents of the new plant were chosen with due regard for what the offspring of the selected plants would produce, and while some features of father and mother stand out right plainly, some are suppressed by the antagonisms that oppose each other in the parentage, while some others are modified in interesting manner.

From now on all new plants originated by Judge Way will bear the local name of the greenhouses, which is Carolina. So the new flower is to be lobed Carolina Cordea-Prowe along with its Brasso-Cattleya name, and every other new flower will have that same Carolina addition to its name to designate the place of its origin, which will also be a certificate of its character.

If it develops that the three months more of sunshine and the moisture conditions of the atmosphere and of the sandy soil prove to be so favorable to orchid growing as this precocious flower appears to indicate it is likely that the Carolina Orchid growers of Knollwood will find their industry not only taking a lead in the growing of orchids that will give it prominence throughout the world, but that Judge and Mrs. Way will find themselves ranked among the prominent research and achievement workers in this fascinating study and occupation. The interest this will give to the Knollwood community will bring fame to the neighborhood, and to what extent one can foretell. But it is now quite likely that Judge Way has stepped from the world of enjoyment that an amateur plant grower builds around himself to find that he has entered a territory in which his field is so big that it can not yet be comprehended.

THREE ACT COMEDY TO BE PRESENTED SOON

The three act comedy will be presented December 14th by members of the Senior Christian Endeavor Society of the Church of Wide Fellowship. Home talent plays are a rare treat in Southern Pines, and far surpass the average calibre of amateur theatricals which some people attend, either because they are acquainted with those taking part, or wish to assist the cause for which the plays are given. "At the Sign of the Pewter Jug" is the title of the play which has been carefully chosen from a large number of comedies for presentation by the society. It will be given by the following cast: the Misses Algene Edson, Doris Eddy,

Evelyn Lyford, Nellie Simons, Dorothy Case, Eileen Loomis, and Messrs. Alden Bowers, Mark Manning, Garland Pierce, Thornton Stackleford, and Frederic Cole. This group of players is under the direction of Miss Ruth Sergeant who has supervised productions given previously by the Society, and to whom much credit is due for successful performances.

MOORE COUNTY HOUNDS SEASON OPENS SATURDAY

The opening hunt of the season for the Moore County Hounds, of which James and Jackson Boyd of Southern Pines are joint masters, will be held next Saturday afternoon from the kennels on Weymouth Heights. The card calls for hunting with the drag-

hounds on Saturday and Wednesday afternoons and with the foxhounds on Monday mornings during the season. Hunting with this pack is by invitation only.

The season for the Sandy Run Hounds, of which Verner Z. Reed, Jr. is master, opened last Friday on the Reed estate beyond Pinehurst. A large field followed the pack over the country which Mr. Reed has been developing during the past year. Mr. Reed's pack is also a private one, his card calling for hunts on Mondays, Wednesdays and Fridays during the winter by invitation.

Nearly \$100,000 in placer gold was washed last season from the newly mined tributaries of Cache Creek, near Talkeetna, Alaska.

Bakers' Food Store

Everything Good to Eat
Southern Pines, N. C.

Today we have two men who gave away big jobs they might have kept—Coolidge and Tunney. We too are giving big bargains in token of thanks To you.

FRESH EGGS
Guaranteed
Per doz.—29c

BROOKFIELD
CREAMERY BUTTER
lb.—39c

PURE COFFEE
Our Special
lb.—15c

FLOUR, PLAIN and SELF-RISING
Every Bag Guaranteed.

12 lbs., 29c—24 lbs., 75c—48 lbs. \$1.49—Meal, pk., 29c

MARKET

Pot Roast, Boned and Rolled, per lb. 23c
Stew Beef 11c
Hamburger Steak 19c
Legs of Lamb, lb. 28c
Pork Chops, lb. 25c
Nut-Marjarine Butter, 2 lbs. for 35c
Fish and Oysters Cheap.

GROCERIES

Potatoes, N. Y. State, lb. 3c
Onions, lb. 4c
Oranges, doz. 15c
Oranges, pk. 40c
Apples, doz. 10c
Grape Fruit, each 5c
Mule Tobacco 15c
Brooms, 50c value, Special each 33c

Country Homes Between the Villages

In this land of extended acreage it is not necessary for any man to confine his home to a fraction of an acre with his neighbors looking in his sidewindows, and no room to turn around on his lawn.

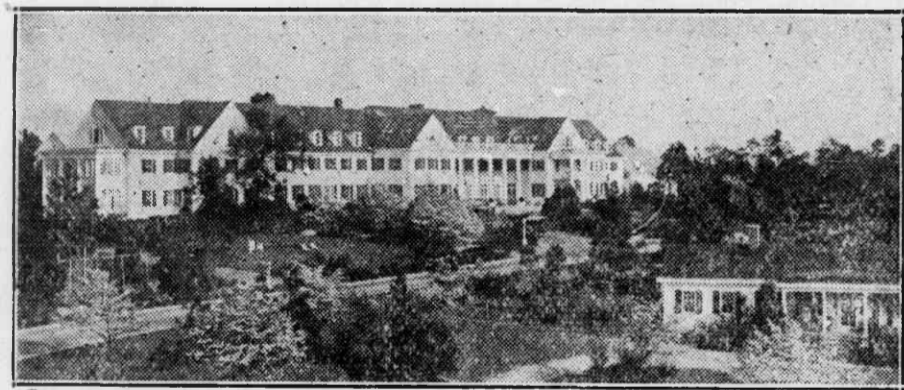
An acreage site, two or three or a dozen or twenty-five acres, will give so much more comfort, and so much more individuality and freedom.

The admirable plan of the Sandhills, with villages here and there affording the modern conveniences of water, lights, telephones, electric power, good roads, and all those things to the lands outside of the villages, solves the plan of country privileges and town comforts.

On the Midland Farms Between Pinehurst and Knollwood Village

In easy reach of everything, acreage provides the ideal type of a home with ground enough for individual action and expression.

SEE MR. EMERY, FIRST FLOOR, RIGHT, GENERAL OFFICE, PINEHURST, N. C.



Highland Pines Inn and Cottages

(WEYMOUTH HEIGHTS)
SOUTHERN PINES

SEASON NOVEMBER TO MAY

Highland Pines Inn with its Splendid Dining Room Service and its Cheerful Homelike Atmosphere caters to the requirements of those occupying Winter Homes in the Pine Tree Section. The Hotel is Situated on Weymouth Heights (Massachusetts Avenue) Amid Delightful Surroundings. Good Parking Space is Available for Motorists. All Features of First Class Hotels are included at Highland Pines Inn. Best of Everything. Summer Hotel: THE INN, Charlevoix-the-Beautiful, Michigan. CREAMER & TURNER, Proprietors

GEORGE B. ARNOLD

WATCHMAKER and JEWELER

West Broad Street
Telephone 7121

(Next to Bank Building)
Southern Pines

EXPERIENCE COUNTS

EXPERIENCE COUNTS

We Have Arranged to Have

DR. HOWARD SMITH

Registered Optometrist of Monroe, N. C., With Us On

Thursday, December 4th

And at Regular Intervals Thereafter. He is an Experienced Man in this line of work and will Fit Your Eyes Correctly and Satisfactorily With Glasses at a Reasonable Price. All Work Guaranteed Satisfactory. Don't Forget the Date.

Throwers Pharmacy, Southern Pines