

Old Fashioned Pennsylvania Buckwheat Flour. Finest for griddle cakes. McNeill & Co.

AT MELVIN'S:

NEW SPRING PRINTS

- Floral Designs and Stripes, Fruit of the Loom and Peppereils 20c
Childrens Print Dresses, Spring Patterns: Sizes 3 to 7 50c, Sizes 7 to 14 59c
Winsome Frocks, Fruit of the Loom materials 95c
Ladies "Character Maid" and Other Good Dresses 95c
New Spring Hats, in pastel shades and darker colors 98c-\$1.19
Our stores are headquarters for Loomcraft Lingerie: Bloomers and Panties 25c, 29c, 50c Brassiers and Girdles 25c to 98c Princess Slips 69c and 98c Fine Quality Silk Hose in the wanted colors 50c and 69c See the New Spring Shoes on display in our window and in the store at \$1.98

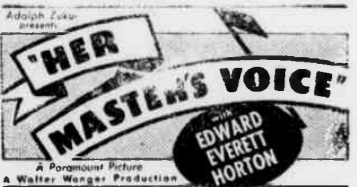
Melvin Bros.

Aberdeen and Southern Pines

THE Carolina Theatres Pinehurst—Southern Pines PRESENT



At Pinehurst Monday, Jan. 27th, 3:00 and 8:15



At Pinehurst Wednesday, Jan. 29th, 3:00 and 8:15

Kate Douglas Wiggin's Story, "Timothy's Quest" with Dickie Moore, Virginia Weidler and Eleanore Whitney

At Pinehurst Friday, Jan. 31st, 3:00 and 8:15



Reserved Seats for Night Shows on sale at the Broad Street Pharmacy.

At Southern Pines Mon., Tue., Wed., Jan. 27, 28, 29, 8:15 Matinee Tuesday at 3:00



At Southern Pines Thurs., Fri., Sat., Jan. 30, 31, Feb. 1, 8:15 Matinee Saturday at 3:00

Churches

SOUTHERN PINES

Baptist Church Rev. J. Fred Stimson, Pastor. 10:00—Sunday School. 11:00—Morning worship. 7:00—B. Y. P. U. Service. Thursday, 7:30 p. m.—Prayer meeting and Lesson Study.

The Church of Wide Fellowship Rev. C. Rexford Raymond, D. D., Pastor. 10:00—Church School. 11:00 a. m.—Morning worship. Sunday, 4 p. m.—Junior Christian Endeavor 6:30 p. m.—Intermediate C. E. Wednesday, 7:30 p. m.—Mid-Week meeting. Wednesday—7:30 p. m.—Choir Rehearsal.

Christian Science New Hampshire Ave., near Ashe St. Services are held every Sunday at 11:00 o'clock. Church Reading Room open Wednesdays from 3:00 to 5:00 p. m. Evening meetings first and third Wednesday each month.

Emmanuel Episcopal Church Rev. F. Craighill Brown, R. A., B. D., Rector. Sunday Services—The first Sunday in the month, Church School 9:30 a. m.; Holy Communion and sermon 11:00 a. m. Other Sundays, Holy Communion, 8:00 a. m.; Church School, 9:30 a. m.; Morning Prayer and sermon 11 a. m. Saint's Days Service, Holy Communion, 10:00 a. m.

Presbyterian Mission—Civic Club Rev. E. L. Barber, 8:45—Sunday School. Rev. Marcus Brownson, D. D., teacher of Adult Bible Class. 4:30 p. m.—Vesper Service.

St. Anthony's Catholic Church Rev. Thomas A. Williams, Pastor. Mass will be offered every Sunday at 8:00 and 10:30. Devotions every Sunday evening at 7:30. Confessions will be heard on Saturdays from 4:30 to 5:30 and from 7:30 to 8:30. Mass will be offered every weekday at 7:30. Instruction class will be held for grammar school children on Sunday at 11:30, and for High School pupils on Saturday at 10:00.

ABERDEEN

Bethesda Presbyterian Church Rev. E. L. Barber, Pastor. Services each Sunday morning at 11:15; meeting services Wednesday evening at 7:30.

Page Memorial M. E. Church Rev. L. M. Hall, Pastor. First Sunday—Preaching 7:30 p. m. Second Sunday—Preaching 11:00 a. m. Third Sunday—Preaching 7:30 p. m. Fourth Sunday—Preaching 11:00 a. m. and 7:30 p. m. Sunday School every Sunday at 9:45 a. m.

PINEHURST

The Village Chapel Rev. Thaddeus A. Chestnut, D. D., Minister. Sunday Services 9:00 a. m.—Holy Communion. 10:00 a. m.—Children's Service. 11:00 a. m.—Church Service.

Community Church Rev. A. J. McKelway, Pastor. 9:45 a. m.—Sunday: Church School and Sandhills Brotherhood. 11:00 a. m.—Morning Worship. 7:15 p. m.—Young Peoples' Worship. 8:00 p. m.—Evening Worship. Wednesday, 7:30 p. m.—Mid-week worship.

Roman Catholic Church Rev. W. J. Dillon, Pastor. Sunday Masses at 6:15 a. m., 8:30 a. m., and 10:30 a. m. Week-day Masses at 8:00 a. m.

PINEBLUFF

Methodist Church Rev. Clyde O. Newell, B. A., B. D. 9:45 a. m.—Church School. 11:00 a. m.—Preaching Service. 6:30 p. m.—Epworth League, Junior. 7:30—Epworth League, Young People.

SUNDAY SERMONS

The union Sunday night service in Southern Pines will be at 7:45 p. m. at the Church of Wide Fellowship. The Rev. J. Fred Stimson will preach on "God in the World." This will be the final union service for the season. It is expected that they will be resumed after Easter.

Dr. C. Rexford Raymond preaches at 11:00 a. m. at the Church of Wide Fellowship on "Reason and Religion."

The Rev. Mr. Stimson will preach at the Baptist church Sunday morning on "A Locked Door."

The lesson-sermon at the Christian Science Church Sunday morning will be on "Truth."



All Want Ads must be paid for before insertion.

SPECIAL BUS RATES TO Florida. Jacksonville \$6.25, Orlando, \$8.50, St. Petersburg, \$8.75, Miami, \$9.95. Less 10 percent round trip. Convenient stop-overs. Tickets and information at Postal Telegraph Co., Southern Pines and Pinehurst, J24.

BUY A SAND HILL HAM at The Trade Store and have one sent to a friend at home. Satisfaction guaranteed. H. A. LEWIS.

FOR RENT: Two small apartments, sunny, many windows. Sunny screened porch with curtains. Price reasonable, Eastman's Page St.

FOR SALE: Lady's Riding Outfit, size 38 in. Black boots size 7. Apply Box 1085, Southern Pines.

FOUND: Lady's diamond ring on U. S. Highway No. 1 near Lakeview. Apply Mrs. A. N. McGee, Southern Pines. Telephone 6184.

AN EXCEPTIONAL OPPORTUNITY Will trade a combination store, filling station, and living apartments, just out of Clearwater, Fla., (now rented) for property in Southern Pines. H. A. LEWIS.

ARCH SUPPORTS, made from an impression of each foot. No metal. Hand-made. R. Leatham, maker, 39 No. May St., Southern Pines, Highway No. 1.

Theatre

Stepping triumphantly into the realm of high adventure and romance, Katharine Hepburn scores what is perhaps the most complete triumph of her meteoric career in "Sylvia Scarlett," the attraction at the Pinehurst Theatre Monday, January 27th, matinee and night. Fascinating, colorful and audaciously different from conventional screen fare, this brilliantly characterized picture sets a new standard in entertainment. From the first scene to last it moves vivid characters, as true to life as they are strange to the screen, through humorous and exciting adventures which unfold against fresh, novel backgrounds. Miss Hepburn puts her genius to the test of a characterization which requires her to masquerade through the greater portion of the picture as a boy. Her performance may well be accounted one of the finest ever contributed to screen or stage. "Sylvia Scarlett" traces the amazing adventures of its title character, a girl who is forced by circumstances into the society of those who walk the narrow line between rascality and dubious respectability. It takes her through exciting episodes in London and the gypsy trail of touring caravans. Eventually, it leads her into a romance with an English artist when she reverts to her real identity as a girl in order to win him from a dangerous rival.

That proverbial fear of one's mother-in-law and her caustic tongue, which seems to have become a deeply-ingrained part of our national consciousness, together with the successful attempts of a middle-aged Babbitt to overcome it, furnish the theme of "Her Master's Voice," sparkling new comedy, the attraction at Pinehurst Wednesday, January 29th, matinee and night. "Her Master's Voice," featuring Edward Everett Horton, Peggy Conklin, Laura Hope Crews and Elizabeth Patterson, is taken from Clare Kummer's successful Broadway stage play, and is grand comedy telling of the trials and tribulations of New Farrar (Edward Everett Horton) who is suffering from a combination of too much Mother-in-Law and the fact that he is just fresh out of a job.

"Timothy's Quest," the attraction at Pinehurst Friday, January 31st, matinee and night, is adapted from the novel by Kate Douglas Wiggin. The story portrays childhood heart-break, tragedy and triumph skillfully and sympathetically and has that sympathy and stimulation which really gets under the skin. It is a fine blend of drama, comedy and contrasting love interest. Life is bitter for Dickie Moore and Sally Martin, orphans, under the heartless guardianship of J. M. Kerrigan and Irene Franklin. Sheltered in the home of wealthy but rigid Elizabeth Patterson, the little pair contribute performances that would do credit to more mature artists.

At Southern Pines "Strike Me Pink," adapted from the Clarence Budington Kelland nov-

STRAIGHT DOWN YOUR ALLEY



And a ten-strike! 16 MONTHS 100 PROOF (full strength) PRICED LOW (ask your dealer)



100 Proof is on a par with the strength of America's costliest whiskeys. Glenmore is 100 Proof. Whether for straight or mixed drinks—for full strength and full value—insist on 100 Proof

Glenmore's KENTUCKY STRAIGHT WHISKEY GLENMORE DISTILLERIES CO., Inc. Louisville • Owensboro

el, is the attraction at the Southern Pines Theatre Monday, Tuesday, Wednesday, January 27, 28, 29, with a Tuesday matinee. "Strike Me Pink" is one of the best Eddie Cantor pictures and combines slapstick, straight comedy, beautiful girls, dancing and photography that provide smash entertainment. Cantor is cast as a meek campus tailor who acquires courage from a correspondence school course and goes on to manage an amusement park. Complications are provided by the efforts of Brian Donlevy as head of a gambling ring, to install slot machines at the park. Eddie, aided by Sally Eilers, outwits them, and along with his bodyguard Parkyarkus, of Radio fame, is chased, first on a roller coaster and then in a captive balloon, with full comedy and dramatic suspense derived from the apparent danger of falling from great heights. "Strike Me Pink" has new and catchy song and dance numbers, one of the most effective being "High and Low" sung by Ethel Merman. New screen faces introduced include Rio Rita, a dancer who should go far in pictures. A limited number of reserved seats for the night performances are on sale at the Broad Street Pharmacy. "Professional Soldier," playing a return engagement at Southern Pines Thursday, Friday, Saturday, January 30, 31, Feb. 1st, with a matinee Saturday, is a very enjoyable comedy. As long as kids are kids, whether they are six, 16 or 60, this sort of show will be enjoyed. Although the title suggests that it might be one of those Marines-havelanded affairs, it actually is decidedly otherwise. In every way, idea of story, the way it is told, style of acting, the dialogue, action and situations, it is geared to provoke laughter.

er, "Professional Soldier" is by Damon Runyon, and in theme, is comedy alternating with drama, plus intrigue that brings on battle. The locale is a mythical kingdom with the U. S. Marine Corps hymn its chief musical accompaniment. Victor McLaglen, the professional soldier, is hired to kidnap the monarch as part of a revolution and plot. He finds the king to be Freddie Bartholomew, an alert youngster who thinks McLaglen and his pal Michael Whelan are Dillinger and "Baby Face" Nelson. For love interest it has a comedy romance involving the soldier and the young king's nagging, shrewish nurse, which is the soldier of fortune's greatest menace.

PATCH'S

Featuring Slater and Red Cross Shoes\$6.50 to \$8.50

One Table of Broken Lots in High Grade Shoes, Values to \$5.00, Choice\$2.98

Few Silver Kid Evening Shoes in Straps or Pump, Choice\$1.19

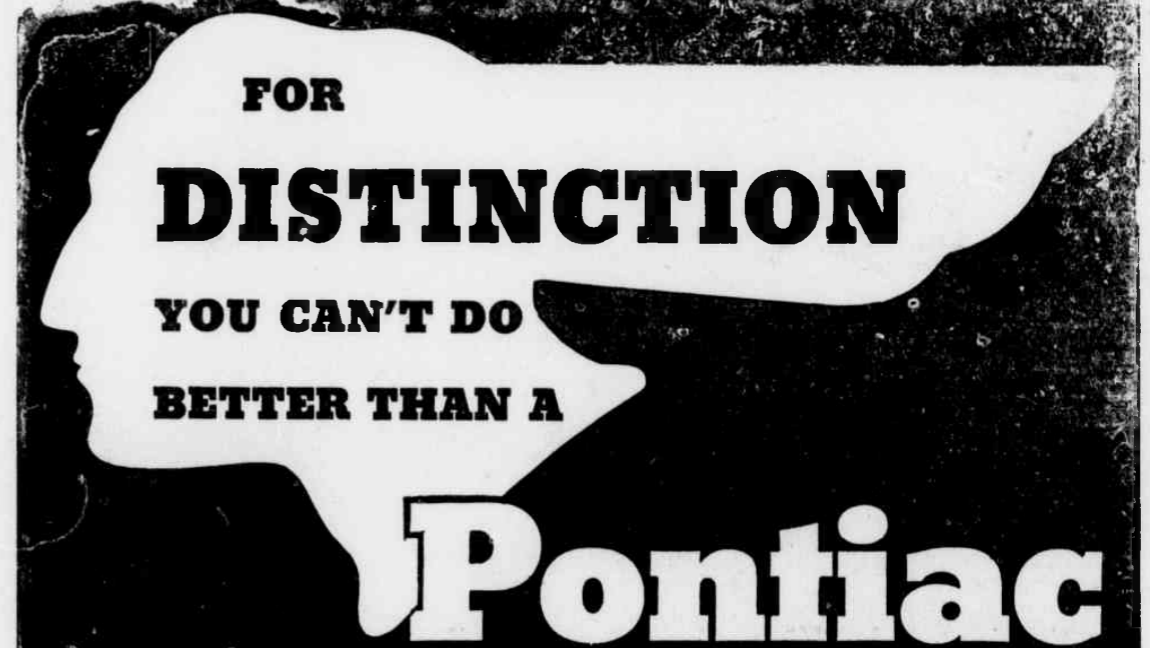
PRINTS

Fast Color Prints, Yard Wide, regular 25c, Special Yard19c

Saturday will be Clearance Day. The values will be worth your consideration. In this sale there will be

- DRESSES KIMONOS COATS ROBES SWEATERS PAJAMAS

C. T. PATCH DEPARTMENT STORE

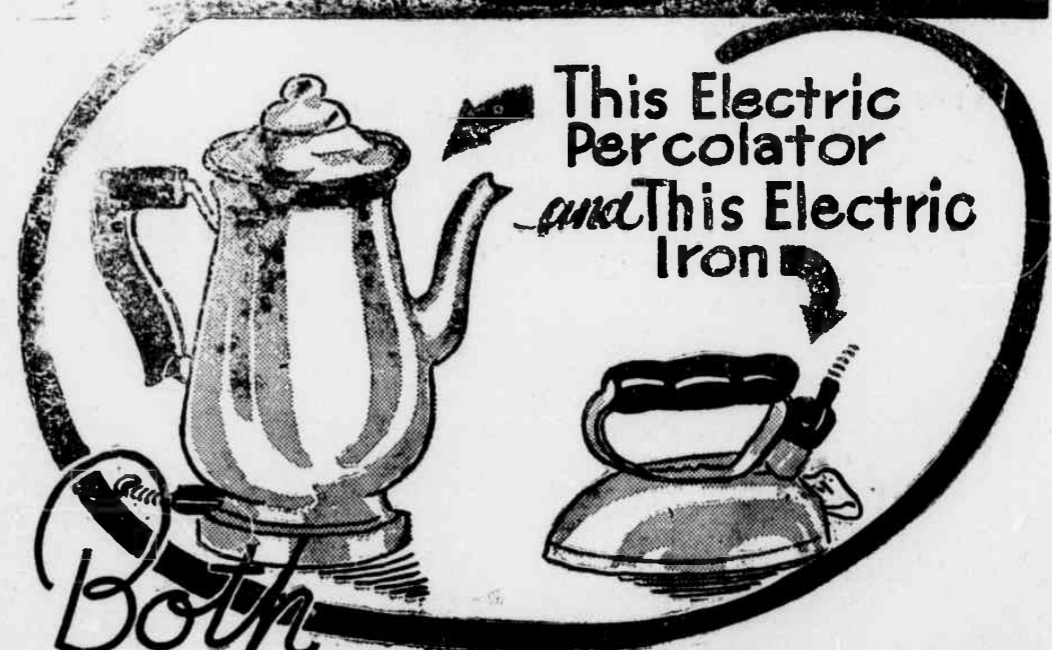


PONTIAC SIXES and EIGHTS FOR DEPENDABILITY PRICED AS LOW AS \$615

List prices at Pontiac, Mich., begin at \$615 for the Six and \$700 for the Eight (subject to change without notice). Standard group of accessories extra.

MARTIN MOTOR COMPANY

Sycamore Street Aberdeen, N. C.



Yours for \$6.45 less a liberal trade-in allowance!

Trade in Your Old Appliances

50¢ for your old Electric Iron and Iron

50¢ for your old Percolator or Coffee Pot.

Here is the best Bargain Offer of 1936! TWO of the newest and most highly improved Electrical Household Helps, both needed in your home, for one low price of \$6.45 on easy terms of only 45c down and 50c a month.

This Bargain Offer is limited, and we may not be able to ever make such a proposition again, so do not wait... get these TWO often-used appliances today!

Carolina Power & Light Company Electricity is CHEAP—Enjoy MORE of it!