

Elon College, Founded in 1889, Emphasizes Well Rounded Development of Its Students

HIGH ACADEMIC RATING ENJOYED BY INSTITUTION

Courses Offered Leading to Ministry, Law, Medicine, Engineering, Teaching and Journalism

FINE ATHLETIC RECORD

Elon College, situated four miles west of Burlington, N. C., has attracted considerable attention in the educational field in recent years through progressive policies that have resulted in a curriculum offering training for nearly all fields of endeavor, rapid expansion of the student body and ideal condition of campus life for young men and young women.

Founded in 1889 by the Southern Convention of the Christian Church, now a part of the Congregational-Christian Church, the institution has had as its primary objectives the education of young men and women on the basis of Christian ideals of character and conduct, at the same time maintaining high academic standards. Its education work is non-sectarian.

The college is a fully accredited institution, its graduates enjoying the highest standing with respect to admission in graduate schools of all universities, eligibility for teaching certificates and other academic privileges.

Its fifteen departments of study offer courses of preliminary work for the ministry and the law, medical and dental professions, courses leading to the professions of civil, chemical, electrical and mechanical engineering and journalism, full preparation for teaching and business administration and special training in home economics, art and expression, as well as in piano, organ, voice and violin.

A faculty of thirty-three members, selected for the thoroughness of their training, their high character and their capacity for inspiring their classes, not only provides the highest type of instruction but exerts a beneficial effect on the students through those close personal contacts that are possible only in a small college with a well integrated campus life.

The Campus

Well out in the open air and sunshine, the Elon campus is one of the most distinctive of any Southern college. Adversity and the kind of spirit that overcomes adversity have both had a part in making it such. On January 18, 1923, the Administration Building, central unit of the institution, was destroyed by fire. Out of its ashes the vision of a Greater Elon took shape in the minds of the college authorities and its friends, and within a few years a group of buildings that ranks for quality of architecture and completeness of equipment among the best in the Country had become a reality.

The central group, erected following the fire, consists of five three-story brick buildings in the form of an H, linked together by ivy-covered cloisters. Forming the bar of the H is the Alamanace Administration Building. Flanking it on the one side are the Carlton Library building and the L. H. Whitley Memorial Auditorium, housing the auditorium and the music department. On the other side are the Duke Science building and the Mooney Christian Education Building, containing the unique School of Christian Education. In addition there are four dormitory buildings, a number of auxiliary structures and a thirty-four acre athletic field. All the buildings are equipped with the most modern facilities. Surrounding the campus and giving it an effect of peaceful seclusion is a massive brick wall, with gates to the north, south, east and west.

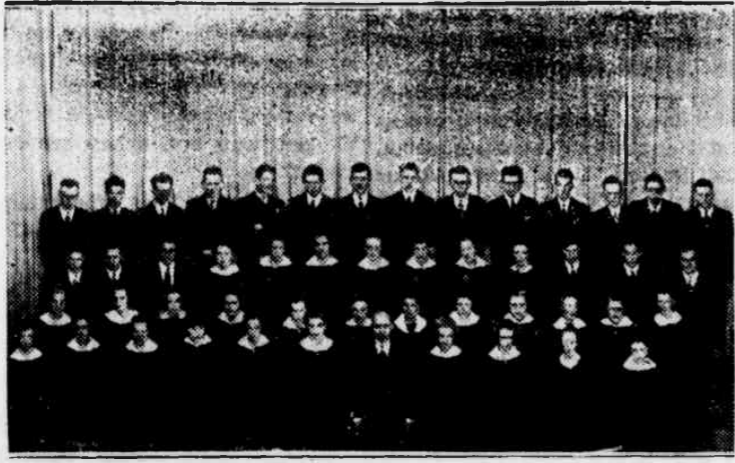
Training for Leadership

Some 2,500 young men and young women have gone out from Elon during its nearly fifty years of service and many have taken places of leadership in religious, educational, social service or political activities. Teaching and home making have claimed great numbers of them. Many have entered business and the professions.

Realizing that academic training is only a part of the business of a college, Elon has provided also for the physical, social and spiritual development of its students.

While the varsity teams have been winning highest laurels for Elon, capturing the football, baseball and basketball championships of the conference in the last year, the aim of the college is to encourage participa-

College Glee Club Here Sunday Night



Christian Education Building is Only One on Any College Campus

Social and Religious Life of Institution Centered in Unique Structure

The first and only Christian Education Building on any college campus is believed to be that at Elon College. In this unique structure, housing the Christian education laboratory, the various courses which the college offers for the training of young people in Christian leadership are taught, and the social and religious life of the college as well as the college community are centered.

The building, erected through the benevolence of Mr. and Mrs. Michael Urban, Jr., of Whittier, Calif., as a memorial to Mrs. Urban's father, the late Rev. Isaac Mooney, was completed in 1925. Here is conducted by the students of the department of religion a closely graded week day school of religion reaching from the beginners' department through the senior department. There is even a mothers' room for children under four years, providing everything that is necessary for comfort, amusement and training of the toddlers.

A special feature of the building is the dictograph which connects each class room with the director's office, permitting him to communicate with the superintendents and teachers, or to listen in at any point of the conduct of the classes, the officer in charge and pupils not being aware that they are being supervised. It is thought that this is a much more satisfactory way of correcting the

faults of young teachers than for the supervisor to be present in the class room.

Two other interesting rooms in this building are those of the manual training department, equipped with the best equipment for woodwork, and the manual arts room for girls, equipped with facilities for sewing, basketry, art, etc. The work of these rooms is definitely integrated with the courses of study in the Week Day School of Religion.

The building houses also the community Sunday School, the Y. M. C. A. and Y. W. C. A. rooms, both equipped for banquets and other social functions, the social club rooms, stages for dramatic expression, and facilities for community-college social, athletic, amusement and religious activities.

There are also class rooms for the study of the Bible and the other subjects of the department of religion. H. A. Lewis and Charles Macauley attended the State Republican convention in Raleigh Tuesday.

tion in athletics on the part of all students rather than one the part of the few. The college teams are open to all on the basis of merit, and in addition to the intercollegiate sports, a well rounded program of physical training on the campus is provided. Student life is organized so as to provide for the development of personality and special abilities along positive and wholesome lines. Under the supervision of the faculty, such student organizations as the Literary Society, the numerous music groups, a dramatic club, class and departmental clubs, religious organizations and eight Green Letter social clubs, four for men and four for women, provide the students ample opportunity for expression and recreation.

Religious Emphasis

Special provision is made for religious training. Church and Sunday School services are held every Sunday and chapel services are conducted on Wednesdays and Fridays. A further moral and religious influence is found in the work of various organizations, such as the Y. M. C. A. and Y. W. C. A., the Students Christian Association, the Ministerial Association, the general aim of which is to provide an enlarged religious life for the student body. At intervals religious emphasis is made a matter for observance by the entire college.

Except for the day students who commute from their homes, all students live on the campus in the well-equipped dormitories. The college is easily accessible to all parts of the country, being situated on the North Carolina division of the Southern Railway and on Highway Route 10-A. Eight mail and passenger trains pass the campus daily and additional transportation is provided by bus line.

The college has enjoyed a remarkable period of development under the administration of Dr. L. E. Smith, who assumed the presidency in 1932 as the fifth head of the institution, building on the firm foundation prepared by his predecessors. At present the college is entering upon a \$1,000,000 Program of Development designed to equip it for still finer service to young people.

Elon Lays Emphasis on Individual Ability

Activities Take Many Forms To Bring Out the Best in Each Student

Elon College affords unusual opportunities for the development and expression of individual abilities outside as well as in the class rooms. Students talented in speaking, writing, music and other forms of expression, or wishing to cultivate such talents, will find plenty of encouragement.

The Dr. Samuel Johnson Literary Society endeavors to combine literary work with debating and an analysis of current problems in a manner that will develop thinking as well as facility of expression. Inter-collegiate debates, arranged from time to time, and the North Carolina Inter-collegiate Peace Contests, supplement the work of the society.

Much attention is given to providing a beneficial campus program for the music students. Musical organizations include the Elon Music Club, which seeks to advance all things musical; the Elon Singers, a mixed chorus of students which serves as the college choir and presents concerts on several tours annually; the Elon Festival Chorus, open to students, faculty and townspeople, which presents choral works from time to time, the college Band, which provides music for football games, and other college functions and the College Orchestra.

At least once a month Vesper Recitals are presented under the auspices of the Department of Music. In these programs visiting artists, members of the music faculty and advanced students appear.

Two public recitals are given each year by the department of expression, and the art department gives an annual exhibit of its students' work during the commencement season. The Playmakers of Elon College provide the students with an opportunity to take part in staging original and other plays.

The students also have their own publication, The Maroon and Gold.

An annual oratorical contest is held for the medal given by President L. E. Smith.

Many other forms of entertainment and exercises are held on the

Recital Program

Elon College Singers Appear at Church of Wide Fellowship Sunday Night

The Elon College Singers, the combined Men's and Women's Glee Clubs of Elon College, will give a recital at the Community Hour at the Church of Wide Fellowship Sunday at 7:45 p. m., March 29th. This is the third annual tour of this celebrated Glee Club. It is predominantly an A Cappella Choir but the program to be given Sunday night will be varied and interesting to all. There is no admission fee, the offering being devoted to the Student Aid Fund of Elon College. Everybody is invited. The program will be approximately as follows:

1. All Breathing Life, Bach, Crucifixus from the B-minor Mass, Bach.—The singers.
2. I will extol Thee, O Lord, from "Eli," Costa—Miss Charblee.
3. God is a Spirit, Jones; Save, Lord, or we Perish, Noble; Fairest Lord Jesus, Voris; Hail, Gladdening Light (for Double Chorus), Wood.—The singers.
4. Violin solo, Selected—Mr. Caskey.
5. Two Antiphonal Chorus, While by my Sheep—17th Century Hymn; Echo Song—di Lassus—The singers.
5. Four Love Songs, Op. 52—Brahms—The Madrigal Club.
7. O Mistress Mine—Margerson; Lullaby—Cloykey; The Sleigh—Kountz—The singers.

campus under the supervision of the faculty. There are also fixed social functions, such as the annual banquet given by President and Mrs. Smith for the senior class, the garden party given by Dr. and Mrs. Smith at commencement, weekly teas each Wednesday, at which students and faculty mingle freely, the annual banquets of the social clubs and the formal dinners given one class for another.

SERL CLUB PRESIDENT

Elmer W. Serl, former pastor of the Wide Fellowship church here, has been elected president of the Sarasota Tourist Club in Sarasota, Florida.

W. P. Morton President of Peabody Alumni

Superintendent of Pinehurst Schools Honored at Association Meeting in Raleigh

At the Peabody College dinner last week in Raleigh, W. P. Morton, Superintendent of the Pinehurst Schools, was elected President of the North Carolina Peabody Alumni Association. Mr. Morton succeeds Dr. B. Frank Kyker of the Woman's College of the University of North Carolina.

The Peabody Alumni Association the Peabody dinner is one of the most interesting events of the State meeting. The association has among its members some of the outstanding teachers, principals, superintendents and college professors of the state. Dr. A. L. Crabb of Peabody College was the guest speaker at the dinner.

As President of the State Peabody Alumni Association, Mr. Morton automatically becomes Regional Chairman. As such he will be asked to name all of the local chairmen in the state and have general supervision of all Peabody alumni organizations in the state.

NEGRO VIOLINIST TO GIVE FREE LECTURE RECITAL

An event of unusual interest to music lovers will take place on Saturday, March 28th at 8:15 p. m. at the Civic Club when George Fuller, negro violinist of Raleigh, will give a lecture recital of negro music illustrating the various kinds of musical expression characteristic of the race. Fuller's program includes spirituals, syncopation, blues etc. which are accompanied by explanatory comments.

Fuller has given his recital with marked success at a number of educational institutions in this state, including the University of North Carolina, N. C. C. W. at Greensboro, Meredith College in Raleigh and others. His appearance here is under the joint auspices of the Civic Club and the Southern Pines Music Society. There will be no charge for admission or will any collection be taken.

Tomorrow is Curb Market day in Southern Pines.

Elon College

For Young Men and Young Women Who Desire the Best in a Small Christian College

OFFERING PREPARATION IN THE FOLLOWING FIELDS

RELIGION	TEACHER TRAINING	PRE-LAW
PRE-MEDICAL or	CIVIL ENGINEERING	JOURNALISM
PRE-DENTAL	COMMERCIAL SUBJECTS	HOME ECONOMICS
BUSINESS ADMINISTRATION		
PRE-ENGINEERING (ELECTRICAL MECHANICAL OR CHEMICAL)		
PIANO	ORGAN	ART
	EXPRESSION	VOICE
		VIOLIN

CONSIDER THESE ADVANTAGES OF ELON:

- ACADEMIC: Thorough training under competent faculty in modernly equipped class rooms and laboratories.
- SPIRITUAL: Emphasis on development of personality on basis of Christian ideals. Elon is the only college with a Christian Education Building with a Completely Graded Sunday School and Laboratory Equipment.
- PHYSICAL: Athletics for all rather than for the few, combined with healthy climate, wholesome food and good water. Elon teams have won many conference championships.
- SOCIAL: Well rounded campus life with many opportunities for individual expression and helpful personal contacts between students and faculty that only a small college can offer.

A college that builds splendid young manhood and young womanhood

For Catalogue Write to:

L. E. Smith, President,

ELON COLLEGE,

Elon College, North Carolina