

Smart Styles For Warm Days



meaning, of love, of sentiment
that simple six letter word.
day in May, the entire nation
same. On Mother's Day, May
in with a full heart, in reality
ady sympathy and comfort---

For Homemakers



characters wax vehement in their rehearsal
presented by Jefferson County, Kentucky

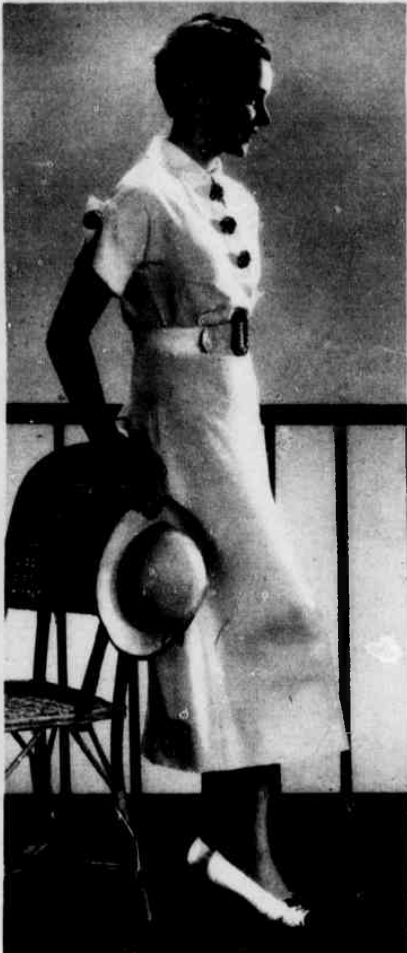
LAND
ake play producing an important feature of
in this way for various projects such as
unity houses and furnishing club rooms, as
ons held by the Kentucky Homemakers

ubs—two in Bell county, three in Boyle and

determined the club to present a play or
winning the honor.

put on "The Old District School." One of
n 70 years old who did her part exceedingly
ote an original play, which, as a part of
enses of delegates to Farm and Home Week
original plays dramatized annual reports
Garrard county, facts and figures about the
tamin," written by the county president,
ow It All From Missouri," was the main
adames See All, Hear All and Do All.
tion was the presentation of Zona Gale's
fferent counties who had given the play
very creditable performance although they
ation.

for those taking part, pleasant pastime
any worthwhile activities.



SPORTS FROCK
Pattern No. H-3145

Newest thing for summer sports wear
is this smart white sharkskin frock spon-
sored by lovely Jane Wyatt. The waist
and wing sleeves are cut in one, for sim-
plicity in construction.

Pattern designed for sizes 12, 14, 16, 18,
20 and 40. Corresponding bust measure-
ments 30, 32, 34, 36, 38 and 40. Size 14
(32) requires 3 1/2 yards of 35 or 39-inch
fabric.



SYLVIA SIDNEY'S CHOICE

Pattern No. H-3140.

This beguiling, yet
simple garden frock
worn by one of your
screen favorites, Sylvia
Sidney, features those
touches you've been
looking for in a frock
which you can put to-
gether quickly and get
into in a hurry without
looking as if you have
hurried. Raglan sleeves,
and a Peter Pan collar
with a shirtwaist clos-
ing give a youthfulness
to the design. Skirt is
perfectly plain with a
kick pleat in the back.

Pattern designed for
sizes 12, 14, 16, 18 and
20. Corresponding bust
measurements 30, 32, 34,
36 and 38. Size 14 (32)
requires 4 1/2 yards of
35-inch fabric plus 1-3
yard of ribbon for the
bow.



JUMPER FROCK
Pattern No. H-3150

Should further evidence
be needed that Spring is
here, please turn your gaze
in the general direction of
this youthful and summery
jumper sport frock featur-
ed by Universal's charm-
ing Betty Lawford. For
more or less immediate
wear as a jumper and
blouse combination, the
blouse can later be dis-
carded for active sports
thus extending the utility
of the frock and making it
do double duty. It is made
of uncrushable linen, so
fashioned that it can be
worn with a variety of
blouses in various colors.
Huge pearl buttons trim
the skirt. And you can
make it yourself, in a
jiffy.

Pattern is designed for
sizes 12, 14, 16, 18 and 20.
Size 14 requires 3 1/2 yards
of 39 inch fabric for the
frock and 1 1/4 yards for the
blouse.



LINEN ENSEMBLE
Pattern No. H-3154

Here's the perfect design
for that really all-round use-
ful suit, sometimes called the
trotteur suit.

Construction lines are sim-
ple, making it easy for home
sewing. A skirt with yoke and
panels is slenderizing to the
hips. Pleats at the ends of
the panels give the skirt slim
fullness. The blouse has the
popular tucked bosom front.
The hip length jacket has bell
sleeves.

Pattern designed for sizes
34, 36, 38, 40 and 42. Size 36
requires 6 1/2 yards of 39-inch
material.

Patterns of dresses pic-
tured above 25c. Please
remit in coin or stamps.
Give your name, ad-
dress, pattern number
and size. Mail order to
Pattern Department,
State Farmer Section,
Scenic Bldg., Asheville,
N. C. A 32-page Sum-
mer Pattern Book is
available at 15c each,
or, if bought in combi-
nation with pattern,
35c for pattern and
book.



PATTERN DEPARTMENT
STATE FARMER SECTION
Scenic Bldg., Asheville, N. C.

Enclosed.....cents in coin for

Pattern No..... Size.....

Pattern No..... Size.....

Name

Address

Town

(Wrap securely in paper)