

Graphic Outlines of History

H. G. McElroy



The First "Bank of the United States"

The first great national bank, called the "Bank of the United States" was established at Philadelphia in 1791, having branches in the leading cities. At that time a national bank as the subject of discussion, as the people believed that the government should have nothing to do with the banking business.

Conscientious planning and expert supervision result in ceremonies unmarred by any neglected detail. Our attendants are trained in thoroughness.

J. N. Powell, Inc.
Funeral Directors
24 HOUR AMBULANCE SERVICE
PHONE 6161 • SOUTHERN PINES

Churches

SOUTHERN PINES

Baptist Church
Rev. J. Fred Stimson, Pastor.
10:00—Sunday School.
11:00—Morning worship.
7:00—B. Y. P. U. Service.
Thursday, 7:30 p. m.—Prayer meeting and Lesson Study.

The Church of Wide Fellowship
Rev. C. Rexford Raymond, D. D., Pastor.
10:00—Church School.
11:00 a. m.—Morning worship.
6:30 p. m.—Intermediate C. E.
7:00 p. m.—Intermediate C. E.
Wednesday, 8:15 p. m.—Choir Rehearsal.
Union Service, 8:00 p. m., alternating here and at Baptist Church.

Christian Science
New Hampshire Ave., near Ashe St.
Services are held every Sunday at 11:00 o'clock.

Emmanuel Episcopal Church
Rev. F. Craighill Brown, B. A., B. D., Rector.
Sunday Services—The first Sunday in the month. Church School 9:30 a. m.; Holy Communion and sermon 11:00 a. m.
Other Sundays: Holy Communion, 8:00 a. m.; Church School, 9:30 a. m.; Morning Prayer and sermon 11 a. m.
Saint's Days Service, Holy Communion, 10:00 a. m.

Presbyterian Church in The Civic Club
E. L. Barber, Pastor.
Services Second and Fourth Sunday mornings 11:00 a. m.
First and Third Sunday evenings 8:00 p. m.
Church School each Sunday morning 9:45.
W. E. Blue, Superintendent.
Rev. Marcus A. Brownson, D. D., Teacher Adult Bible Class.

St. Anthony's Catholic Church
Rev. Thomas A. Williams, Pastor.
Mass will be offered every Sunday at 8:00 and 10:30.
Devotions every Sunday evening at 7:30.
Confessions will be heard on Saturdays from 4:30 to 5:30 and from 7:30 to 8:30.
Mass will be offered every week-day at 7:30.
Instruction class will be held for grammar school children on Sunday at 11:30, and for High School pupils on Saturday at 10:00.

PINEHURST

Community Church
Rev. A. J. McKelway, Pastor.
9:45 a. m.—Sunday: Church School and Sandhills Brotherhood.
11:00 a. m.—Morning Worship.
7:15 p. m.—Young People's Worship.
8:00 p. m.—Evening Worship.
Wednesday, 7:30 p. m.—Mid-week worship.

Roman Catholic Church
Rev. W. J. Dillon, Pastor.
Mass each Sunday morning at 8:00 o'clock during summer months.
Week-day Masses at 8:00 a. m.

ABERDEEN

Aberdeen Baptist Church
Rev. Ernest M. Harris, Pastor.
Sunday School every Sunday morning at 10:00 a. m. J. A. Bryant, Superintendent.
Preaching and Worship Service each second and fourth Sundays at 11:00 a. m. and 7:45 p. m. B. Y. P. U. every Sunday at 6:30 p. m. Prayer meeting every Wednesday at 7:45 p. m.

Bethesda Presbyterian Church
Rev. E. L. Barber, Pastor.
Hours of worship: Sunday School each Sunday 9:45 a. m.; Worship First and Third Sunday mornings 11:00 a. m.; Second and Fourth Sunday evenings 8:00 p. m.

Page Memorial M. E. Church
Rev. L. M. Hall, Pastor.
First Sunday—Preaching 7:30 p. m.
Second Sunday—Preaching 11:00 a. m.
Third Sunday—Preaching 7:30 p. m.
Fourth Sunday—Preaching 11:00 a. m. and 7:30 p. m.
Sunday School every Sunday at 9:45 a. m.

MANLY
Presbyterian Church
Sunday School at 10:00 a. m. Young People's meeting at 7:00 p. m. Preaching second Sunday night at 7:30. Fourth Sunday morning at 11:00 o'clock.

PINEBLUFF
Methodist Church
Rev. Clyde O. Newell, B. A., B. D.
9:45 a. m.—Church School.
11:00 a. m.—Preaching Service.
6:30 p. m.—Epworth League, Junior.
7:30—Epworth League, Young People.

ROSELAND
Deep Creek Baptist Church
Myron M. Adams, Minister. Order of Services Sunday School at 10:15 a. m. every Lord's day.
Preaching services at 11 o'clock a. m., the first and third Sundays.

County Board To Hear Tax Appeals June 15-16

Commend Fire Warden Fields for Fine Work at Regular Monthly Session

The Board of Commissioners of Moore county met in regular session on Monday for the transaction of routine business.

The report of Fire Warden Alex Fields was received and accepted and his excellent work was commended.

The board voted to recommend to the State Highway Commission that 1.2 miles of road connecting the Vass-Carthage road near Shady Grove church and the Deaton-Blue road near Z V. Blue's residence be placed on the state system for maintenance.

The following applicants were approved for the issuance of beer licenses subject to the approval of the town officials in the towns in which they are located: Howard Harrell, Southern Pines; Amos Broadway, Southern Pines; J. A. Ferguson, Pinehurst; C. N. Boaz, Cameron; James Katson, Carthage; Mrs. Karl Andrews, Pinehurst.

The Board recessed to meet as a Board of Equalization and Review on Monday and Tuesday, June 15th and 16th. On Monday they will hear persons from Carthage, McNeill, Sandhill and Mineral Springs townships, and on Tuesday those from Bensalem, Sheffield, Ritter, Deep River and Greenwood.

VACATION CHURCH SCHOOL IN SOUTHERN PINES JULY 6

As the Vacation Church School at the Church of Wide Fellowship opens July 6th, an interesting program has been arranged for the preceeding four weeks beginning Monday, June 8th at 8:15 a. m.

Prof. Frederick Stanely Smith and Miss Susan Swett will instruct two groups each, in music, serving, games, etc.

Special attention will be given to church hymns for church schools and junior and young people's choirs, thus aiding all the churches in the community in a very important part of their worship services.

Simple lessons in serving will include the making of dresses by the older girls and young women. If preferred a class in simple art, decoration such as "tie and dye" work, etc. will be formed.

CHURCH NOTES

At the Baptist Church Sunday morning the Rev. Mr. Stimson will preach on "The Christian Method of Success."

"God, the only Cause and Creator" is the subject of the lesson-sermon Sunday morning at the Christian Science Church. The time of the weekly Christian Science broadcast from Charlotte each Monday morning has been changed from 10:30 to 10:45 o'clock.

At the Emmanuel Episcopal Church the Rev. Harvey A. Cox of Raleigh will officiate at the 11:00 o'clock service this Sunday.

The preacher at the Church of Wide Fellowship Sunday morning at 11:00 o'clock will be the Rev. C. H. Rowland of Greensboro. He will preach on "Making Life Worth While."

FARM WOMEN ATTEND WASHINGTON CONFERENCE

A group of farm women attended the international conference in Washington this week. Every three years farm women from all parts of the world gather for a discussion of their problems. The previous meeting was held in Switzerland.

Attending the Washington conference from this section were Miss Flora McDonald, of Carthage; Mrs. M. C. McDonald, West End; Miss Jeanne McCrimmon, Mrs. D. A. Morrison and Mrs. A. A. Moore of Lakeview; Miss Ethel Popiland, Eagle Springs; Mrs. G. L. Mauney, Jackson Springs; Mrs. J. F. Sanders, Jonesboro, and others.

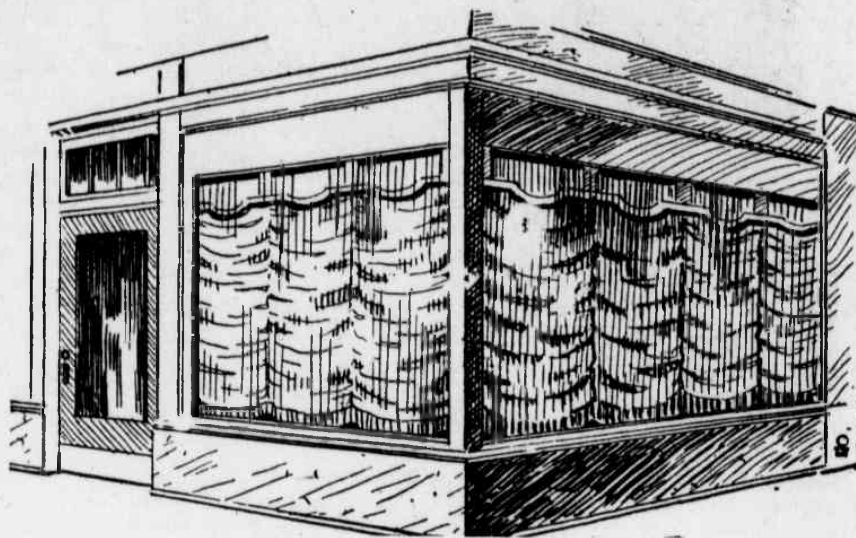
Berry Market Opens

Daily Auctions at Vass.—New Sized Crates Used for First Time

Dewberries are being marketed daily in Vass this week with satisfactory prices. The Chadbourne Marketing Company is again operating the auction market and several buyers are there.

For the first time local growers are marketing their berries in 24-quart crates instead of the 32 size which has been in use since the dewberry industry was first started in this section. The new crates are proving quite popular.

The market in Cameron is also active.



Drawn Shades Won't Sell Goods

YOU say you don't draw the shades in your show windows. Well, DO you draw the shades in the biggest window of them all, in the window that everyone sees, in the window that sells thousands of dollars worth of merchandise overnight? That window is the advertising pages of The Pilot.

A window which doesn't wait for prospective buyers to pass by, goes right into their homes and demands attention. Give your merchandise the sort of display it deserves. The public won't buy what it doesn't know about no matter how strong the inducements, or how big the bargain. The Pilot show window should be YOUR show window.

**RUN UP THE SHADES 'N LET'S
SEE WHAT YOU'VE GOT TO SELL**

LET FOLKS KNOW WHAT'S GOING ON IN YOUR STORE

THE PILOT

"Covers the Sandhills Like the Sand"