

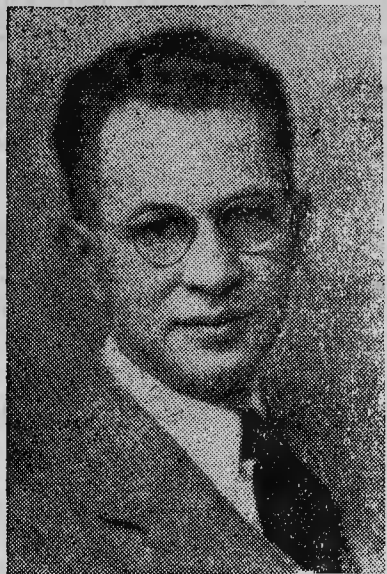
### Churchman Will Help Raise Funds For Building Here

Curtis R. Schumacher of New York City, church financial adviser for the Board of Home Missions of the Congregational Christian churches, will be the guest of the Church of Wide Fellowship in Southern Pines from January 15 to 21 to assist in the raising of funds to build a new educational plant.

Formerly a banker, Mr. Schumacher, since his association with the board, has visited churches all over the United States helping in financial projects, including the raising of funds for new buildings, repairing and remodeling and the liquidation of indebtedness incurred in church building.

"In this day of unrest, strife and lack of faith in one another, the only hope of the world is the church of God. She opens her arms to all. She knows no class of color. She is the greatest procreator of good will known to men. Never, in my opinion, has there been a more vital need of the church than today. To aid in

### HERE NEXT WEEK



C. R. SCHUMACHER

a church building enterprise is one of man's greatest opportunities. Who dare afford to miss this chance?" says Mr. Schumacher.

Prior to going into full time church work Mr. Schumacher was active in local business and civic activities, as a church school teacher and lay leader and along community lines of religious education.

The Church of Wide Fellowship was organized in 1895. The new

educational plant desired will replace the old structure which was destroyed by fire last February. The plans provide for a chapel, library, church parlor, sound-proof choir room, fellowship hall, kitchen, nursery and church office. Assembly rooms and classrooms for a fully departmentalized Sunday School are provided therein. This structure of fire-resistant construction will be built onto the present spacious sanctuary.

### Aden Dance School Opens Hamlet Branch

A third studio of the Martha Aden School of Dance of Southern Pines was opened this week at Hamlet, where registration started Wednesday for classes to be held at the city hall.

Miss Aden, who started her school here in January 1949, enlarged it in September with the addition of a branch at Sanford, taking over an established school there. The school's newest expansion was made at the request of a group of Hamlet citizens. Classes in tap, acrobatic, ballet and character dancing will be held.

Mrs. Lamar Smith of Aberdeen is pianist for classes in the three towns.

PILOT ADVERTISING PAYS

### New Church Officers Are Chosen At Annual Meeting of Emmanuel Church

#### Barron Honored For Long Service; Stevens Is Successor

The close of a successful year was marked, and soundings taken for the year ahead, at the annual parish meeting of Emmanuel Episcopal church, held at the church Tuesday night following a supper in the parish hall.

Member families totaling some 150 persons were present to hear reports, take part in elections and give honor where honor was due. The meeting opened and closed with prayer by the rector, the Rev. C. V. Covell.

A rising vote of thanks honored a quarter century of faithful service on the part of John C. Barron, who after 21 years as church treasurer, following four on the vestry, had asked to be relieved of further responsibility at this time.

E. C. Stevens was elected to succeed him in the office of treasurer.

Elected to the vestry for three-year terms were Sherwood Brockwell, Jr., Admiral John Dundas and Virgil P. Clark, succeeding Dr. W. F. Hollister, N. L. Hodgkins and Hoke Pollock, whose terms were expiring. Other members of the vestry are W. E. Cox, Jr., W. D. Campbell, R. E. Rhodes, E. Nolley Jackson, Elmer Davis and C. L. Butler. Senior and Junior wardens will be elected by the vestrymen from among their number.

Announcement was made that Sherwood Brockwell, Jr., had accepted the post of church school superintendent.

Reports were made by W. E. Cox, Jr., for the Men's club; N. L. Hodgkins, senior warden, on improvements to the church plant made during the year; Mrs. James B. Swett, for St. Mary's Guild; Mrs. Paul T. Barnum, for St. Anne's Guild; Miss Laura Kelsey, for the Altar Guild; C. L. Butler, superintendent, for the church

school; John C. Barron, finances; and the Rev. Mr. Covell on his first full year as rector. Mr. Covell came to the parish November 1, 1949.

General progress and numerous fruitful activities were evidenced in the reports.

Among developments of special interest were several physical additions and improvements—a new roof on the church building, American and Church flags added, also hassocks, and candlestands for use during the Christmas season; the memorial gift of brass alms plates made by Miss Ursula Grosvenor honoring her sister, the late Miss Florence Grosvenor of New York City; excellent cooperation shown throughout the year among the 40 members of the Altar Guild, headed by co-chairmen Miss Laura Kelsey and Mrs. Jane Towne, and the flower committee of which Mrs. W. D. Campbell is chairman.

Special commendation was made

of the work of the choir, under direction of Mrs. Paul T. Barnum and happiness was expressed, the church's share in promoting the new Southern Pines Girl Scout organization by providing meeting place for the troops.

Parish additions were reported by the rector as follows: nine baptisms, seven by confirmation, nine by transfer and 10 otherwise, totaling 35. Losses were four deaths, 17 by removal, for a net gain of 18 members.

The women's guilds were hostess at the delicious chicken supper, in the preparation of which many members cooperated. Enthusiasm was evident throughout the meeting, believed the largest in the parish history. Enjoyment was added, a musical program—two songs by Miss Barbara Young, club director of the Southern Pines school, accompanied by Mrs. Arthur Eakins at the piano.

PILOT ADVERTISING PAYS

Join MARCH of DIMES JANUARY 15-31

### The New Plymouth Cranbrook Four-Door Sedan



Featuring improvements which produce unprecedented roadability and riding qualities, the beautiful redesigned 1951 line of Plymouth cars have numerous mechanical improvements and have retained the traditional roominess. Shown above is Plymouth's Four-door Cranbrook sedan.

### New Plymouth Combines Beauty and Riding Ease

Detroit, Mich.—Spectacular new qualities which produce driving and riding ease heretofore unknown in automobiles of any price feature the new line of Plymouth cars. Combining smart new body lines with unprecedented interior luxury, the new Plymouth will go on display in dealer showrooms throughout the United States Saturday, Jan. 13.

Designers have given the Plymouth a striking new silhouette, and refinements in the interior are innovations in the lowest price field. The styling improvements retain the traditional roominess of the cars.

Easier to drive and more comfortable, the new cars have greater beauty, more safety features and broader ranges of vision than ever before.

Engineers say the new "Safety-Flow ride" takes the bounce and wallop out of bumps. A new application of hydraulic flow control in the shock absorbers provides a more gradual change of resistance during spring deflections and thus a softer ride when driving on average roads. It also exerts extra resistance on rough roads to a degree where driver and passengers are almost completely freed of the discomfort of being jolted around.

The "Safety-Flow ride" is one of the greatest contributions to driving comfort and safety in recent years, according to D. S. Eddins, president of Plymouth Motor Corp.

"The new Plymouth gives you roadability never before offered in any car," he said. "There is no necessity for steering wheel fatigue to control the car on difficult roads. The driver is no longer required to focus full attention on the condition of the road. He may be more watchful of oncoming traffic, pedestrians, curves, crossroads and other potential hazards."

Eddins called the new development a major step toward restful motoring. More confidence is gained by driving or riding in a new Plymouth with the "Safety-Flow ride," and as a result there is less driver and passenger fatigue, he said.

The lines of the new Plymouth

have been beautified. An appearance of massiveness combined with smart streamlining is induced by a new grille, beautifully redesigned front fenders and hood, a wider windshield and a larger rear window. Narrower windshield pillars together with the wider windshield provide additional lateral vision. To utilize fully the greater vision through the new rear window, the rear view mirror is two inches wider. The chair-height front seat and the new design of hood and front fenders permit the driver to see the road nearer the car.

There are numerous mechanical improvements. Windshield wipers are electrically operated, and are of the single-speed, self-parking type.

A unique pressure-vent radiator cap, which has been added as standard equipment, permits the cooling system to be operated at atmospheric pressure during normal driving conditions. Under high-load, high-temperature driving conditions, the new radiator cap provides a pressurized cooling system to allow high coolant temperature without boiling or loss of anti-freeze.

All Plymouth engines now have a built-in by-pass cooling system permitting water circulation and resulting in more uniform temperature throughout the engine during the warm-up period. The new system consists of a passage in the cylinder head and block providing direct access to the water pump, and a choke-type thermostat to regulate coolant flow to the radiator.

The generator output has been raised to 45 amperes, an increase of five amperes, providing greater electrical capacity for the operation of car accessories. The new hand brake "T" control handle is more accessible, and, as on former models, it operates independently of the foot brake as an added safety measure.

In the convertible club coupe, the spare tire is mounted vertically as in other coupe and sedan models, rather than on the trunk floor.

The new Plymouth interiors offer the finest selection of upholstery and trim and the most harmonious color

schemes in the company's history. The colors which have been chosen provide throughout the interior a pleasing combination of shades in harmony with the car's exterior color. Designers say the interior is an unparalleled achievement in combining practicality with luxury. Always noted for spaciousness, Plymouth now has even more head room and more room to stretch out in comfort in the rear seat.

To go with the high quality of the upholstery, there is a handsome new instrument panel which features a more convenient grouping of controls, newly shaped instruments and improved coloring and lettering for easier checking while driving.

The wide, deep chair-height seats, the ease of entrance and exit, and all the other traditional Plymouth features for driver and passenger comfort have been retained.

There are nine body-types in the new Plymouth line: the Concord series includes a two-door sedan and a three-passenger coupe as well as the two all-metal utility models, the Suburban and the Savoy; the Cambridge series has a four-door sedan and a club coupe; and the Cranbrook series includes a four-door sedan, a club coupe, and a convertible club coupe.

The Suburban and the Savoy, with their smart, distinctive lines are all-purpose vehicles. They have the beauty and comfort of a sedan, and by simply lowering the rear seat flush with the floor they become sturdy cargo carriers for farmers, salesmen, sportsmen, tourists or others who require large cargo capacity. The Savoy, called the "country club companion" of the Suburban, provides a greater variety of luxurious interior appointments and more exterior refinements to enhance the car's striking appearance.

Among the "high-priced car" features which are retained are six-cylinder, 97-horsepower engine with a 7 to 1 compression ratio, the combination ignition and switch, automatic electric choke, super-cushion tires, safe-guard hydraulic brakes, and safety-rim wheels.

OUR Greatest ANNUAL CLEARANCE SALE NOW GOING ON!

### THREE SENSATIONAL BARGAIN RACKS IN WOMEN'S SHOES

<b>Rack No. 1</b> Casuals and Ballerinas Values to \$5.95 <b>\$1.99</b>	<b>Rack No. 2</b> Dress and Casual Shoes Values to \$6.95 <b>\$2.99</b>	<b>Rack No. 3</b> Dress and Casuals Values to \$7.95 <b>\$3.99</b>
--	--	---

### BARGAINS IN FAMOUS NAMES LADIES' SHOES

Dress and casual styles by American Girl, Valentines, Fortunets, etc., \$8.95 values! <b>\$4.99</b>	Dress shoes by Glamour and Heydeys in red, brown and black. \$10.95 values! <b>\$6.95</b>	Dress shoes by Tweedies! All the suedes and some styles in brown calf. Values to \$13.95! <b>\$8.95</b>
--	--	--

All Men's Famous NETTLETONS \$14.95 Values to \$22.50. Widths from AA to D



One lot of Men's DRESS SHOES By Taylor-Made and Jarman. Widths from A to E. Values to \$17.95! **\$7.99**

One Lot of Men's DRESS SHOES Styles by Taylor-Made, Jarman and Pedwin. Values to \$12.95 **\$6.99**

For This Sale, Please... ALL SALES FINAL NO EXCHANGES NO APPROVALS

One Lot of LADIES' HANDBAGS 1/2 PRICE

Early Shoppers Will Get Best Selections

McIVER'S Distinctive Footwear SANFORD, N. C.

McDonald-Page Motor Co. Southern Pines, N. C.