

5 great DODGE advantages you'll want

- 1 **Easy handling!** Shorter turning diameters for easier parking—easier driving in and out of tight spots.
- 2 **Riding comfort!** Comfortable, roomy cabs with extra-wide seats! Greater vision area, too!
- 3 **Performance!** Lightweight aluminum-alloy pistons! Chrome-plated top piston rings!
- 4 **Power!** 8 powerful engines—with high compression ratios. There's one ideal for your job.
- 5 **Safety!** Rivetless Cyclebond brake linings (except air brake models)! Biggest windshield!

DODGE "Job-Rated" TRUCKS

Easy Terms!
Prompt Delivery!
Come in Today!



PHILLIPS MOTOR CO.

Monroe Street

CARTHAGE, N. C.

Gibson



Diamond Eight

pint
\$2.30

4 1/2 qt.
\$3.65

GIBSON WHISKY IS BLENDED WHISKEY OF PROOF 85.5 GRAIN NEUTRAL SPIRITS GIBSON DISTILLING CO., NEW YORK

L. V. O'CALLAGHAN

PLUMBING & HEATING SHEET METAL WORK
Telephone 5341

DO YOU KNOW?

That We Are Open Every Wednesday Afternoon

MILK, FROZEN MEATS and VEGETABLES

We have just installed a new "Dewmaker" Vegetable and Meat Refrigerator for your convenience

DEESE SINCLAIR SERVICE STATION

U. S. Highway No. 1 Next to Jackson Motors
Phone 2-6861—Southern Pines

First Cousins In Saturday Crash; Cars Demolished

Two cars, driven by first cousins, both of whom were cited to court, were involved in an accident about 10 p. m. Saturday near the Greenville school on the rural road from Cameron to Vass, it was reported by the State Highway Patrol. The cars were said to have been totally demolished.

The patrolman said that Robert Lee Thompson, about 32 years old, gave a signal to turn right and instead turned left, directly in the path of another southbound car coming along at a high rate of speed. The two came together in a violent impact which knocked both cars a considerable distance, damaging them to an extent estimated as "beyond repair."

The second car was driven by Arthur Franklin Thompson, about 22. Both men are Negroes, living at Cameron.

Robert Thompson was reported uninjured. Arthur Thompson was hurt about the mouth, and had a tooth knocked out. Johnny Gilmore, about 25, a passenger in the second car, received head injuries and was taken to Lee County hospital at Sanford.

Robert Thompson was cited to recorders court at Carthage for giving an improper hand signal causing an accident, and his cousin was also cited, for careless and reckless driving causing an accident.

Patrolman Stroud Transferred Here Replacing Deal

A University of North Carolina graduate who taught school for a while, then changed over to the State Highway Patrol, was transferred to Southern Pines this week replacing Patrolman H. F. Deal.

He is Patrolman Richard Stroud, a native of Pink Hill and a veteran of Coast Guard service in World War 2. He graduated from the Institute of Government's patrol school in June 1951 and was stationed at Raleigh until last December. A reservist, he was then recalled to the Coast Guard, but was returned to inactive duty last Wednesday at Staten Island, N. Y., and, returning to the Patrol, received the Moore County assignment.

Mr. Stroud attended Pink Hill High school, Oak Ridge Military Institute, Atlantic Christian college, and the University at Chapel Hill, where he has also taken post-graduate work leading to a master's degree. He was a teacher at elementary schools at New Hope and Wilson following his graduation.

He is married to the former Carolyn Smith of Pink Hill, and they are in the market for a small housekeeping apartment in Southern Pines.

Patrolman Deal, who replaced J. P. Rhyne here April 1, 1950, has been transferred to Siler City headquarters of the district which includes Moore county.

Pinckney Merger Consolidates Four Negro Schools

More than 200 Negro children who formerly attended four small elementary schools in the Carthage area are now attending classes at the Pinckney (Carthage) elementary school. The change was made possible by a recently completed nine-room addition to the Pinckney school—part of a construction program there that also included a cafeteria unit and shop for agriculture and trade students, all of which have recently been completed and are now in use.

Seven teachers who formerly taught in the one-room and two-room schools that have been abandoned were all fitted into the Carthage school's teaching program, according to the office of H. Lee Thomas, Moore schools superintendent. A total of 209 children in the first through eighth grades were transferred to the Carthage school from Bethlehem school west of Carthage, Wayside school out of Carthage toward Union church, Mount Zion school between Cameron and Carthage and Shady Grove school out of Carthage toward Knollwood Airport.

Shop classes, which have moved into the new unit at Carthage, were formerly held in a lodge building.

School Cafeteria MENUS FOR WEEK (Subject to Minor Changes)

March 17-21
MONDAY

Cheese Macaroni
Wiener, Relishes
Sauerkraut
Whole Orange
Milk

TUESDAY

Beef and Vegetable Stew
Garden Peas
Chocolate Pudding
Hot Biscuits, Margarine
Milk

WEDNESDAY

Pinto Beans, Minced Onion
Steamed Rice
Chilled Canned Tomatoes
Banana, Pecan Jello
Corn Bread, Margarine
Milk

THURSDAY

Chili Con Carne, Crackers
Tossed Green Salad
Stewed Prunes
Raisin Cake Bars
Pan Rolls, Margarine
Milk

FRIDAY

Orange Juice
Hard Cooked Eggs
Steamed Cabbage
Buttered Potatoes
Salted Pecans
Wheat Bread, Margarine

CENTERPOISE POWER

Vibration and power impulses are "screened out" as engine is centered and rubber-cushioned between new high-side mountings.

BODY BY FISHER

Fisher Body sets the standard—for styling, for craftsmanship, for comfort! Fisher Uni-steel construction is extra strong.

LARGEST BRAKES

Big 11-inch brake drums apply more leverage for more stopping power. Stops are smoother, safer, with less effort.

UNITIZED KNEE-ACTION RIDE

Chevrolet's famous Knee-Action ride is now even softer, smoother. New shock absorbers give even finer ride control.

WIDEST COLOR CHOICE

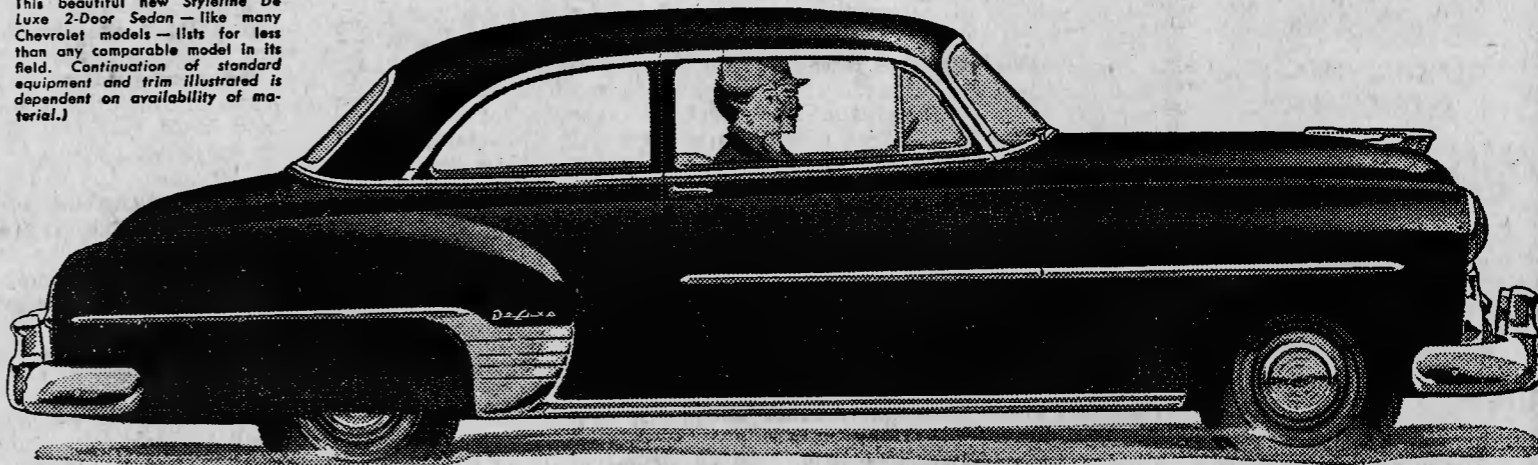
26 rich new colors and two-tone combinations... widest choice in Chevrolet's field. New De Luxe interiors are color-matched.

WIDEST TREAD

Chevrolet measures 58 3/4 inches between centers of rear wheels—a broader base to give you more stability, less sway!

Lowest priced in its field!

This beautiful new Styleline De Luxe 2-Door Sedan—like many Chevrolet models—lists for less than any comparable model in its field. Continuation of standard equipment and trim illustrated is dependent on availability of material.



4-WAY ENGINE LUBRICATION

Chevrolet's exclusive engine lubricating system supplies exactly the right kind and amount of lubrication to each moving part.

CAST IRON ALLOY PISTONS

The same material as the cylinder block, pistons expand and contract at same rate. This reduces wear, lowers oil consumption.

SAFETY PLATE GLASS ALL AROUND

Chevrolet alone in its field gives you safety plate glass in windshield and all windows, for a clearer, truer all-round view.

POWERGLIDE AUTOMATIC TRANSMISSION

Simpler with fewer parts to wear. Smoother—no complicated intermediate gears. Optional on De Luxe models at extra cost.

MOST POWERFUL VALVE-IN-HEAD ENGINE

Teamed with Powerglide is the most powerful valve-in-head engine in its field and an outstanding performer in any field!



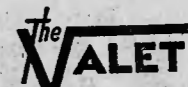
The Only Fine Cars PRICED SO LOW!

MID-SOUTH MOTORS, Inc.

Poplar Street

ABERDEEN, N. C.

HAVE YOUR CLOTHES CLEANED



D. C. JENSEN

Where Cleaning and Prices Are Better!

Fields Plumbing & Heating Co.

PHONE 5952

PINEHURST, N. C.

All Types of Plumbing, Heating,

(G. E. Oil Burners)

and Sheet Metal Work

ADEN SCHOOL OF DANCE

Old VFW Clubroom

N. E. Broad St., Straka Bldg.

Ballet : Tap : Acrobatic

Ballroom

Phone 2-8224

LENTEN MISSION

March 16 to March 23

MISSION SERVICE at 4 p. m.

SUNDAY MASSES: 8 and 10:30 a. m.

WEEKDAY MASSES: 7 and 8 a. m.

Mission Talk at all Masses

Mission Conducted by Father Francis Chapman, C.S.S.R.

Saint Anthony's Catholic Church

Vermont Avenue at Ashe Street

FATHER PETER MARTIN DENGES, Pastor

Only the New Chevrolet brings these fine features to the low-price field!