

### Agriculture Group Goes Sightseeing

W. E. Gladstone, head of the agriculture department of Vass-Lakeview High school, with a group of high school boys, left Vass at 9 a.m. Friday for a trip to the mountains and the party returned Sunday afternoon.


They visited Asheboro, Lexington, Mocksville, Wilkesboro, Blowing Rock, Linville Falls, Mt. Mitchell, Linville Caverns, Spruce Pine, Crossnore, Marion, Morganton and Hickory, and came home by way of Albemarle. They spent a night camping on the banks of Linville river.

Boys in the group included Jimmy Johnson, Edward Cameron, Donald Bridgers, J. T. Hennings, Johnny Ferguson, Ernest Evans, Brent Hall, Glenn Foster, James Barber, David Parker, Bobby Frye, Coy Blue, and Crawford Rollins.

FOR RESULTS USE THE PILOT'S CLASSIFIED COLUMN

## GREAT OAK

BLENDED WHISKEY



**\$2.00** pint  
**\$3.20** fifth

84 proof, 70% Grain Neutral Spirits

**Austin Nichols**  
COGNAC, INC.  
BROOKLYN-NEW YORK

### Many Cases Are Docketed For Trial In Superior Court Week of Sept. 15

#### Ninety-Six Old Suits Are On Supplemental List

A term of Superior court for the trial of civil cases is scheduled to begin in Carthage next Monday, with Judge J. Will Pless, Jr., presiding.

Thirty-four cases are listed on the regular docket, 39 on the motion docket, and a supplemental calendar lists a total of 96 old cases that will be non-suited unless some reason for not disposing of them in this way is presented. The supplemental list is being printed along with the others, as a public service as it has been pointed out that principals in any of these cases who object to their being non-suited should get in touch with their attorneys immediately.

#### REGULAR DOCKET

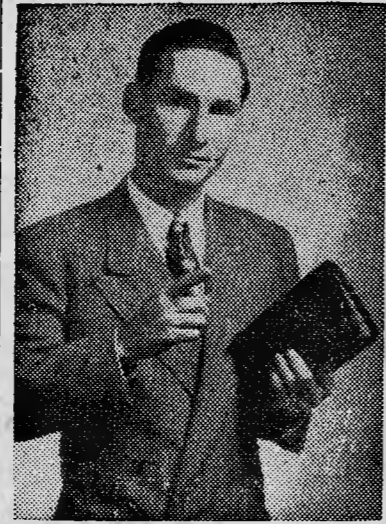
##### For Trial Monday

Callie Tyson Allison vs. Ellihue Allison; William H. Saunders vs. Mrs. Lillie Saunders; Mary Ann Whitaker vs. William H. Whitaker; Mae Maness Callicutt vs. Winfred Callicutt; Addie C. Ray vs. Emmanuel F. Ray; Lula Smith Lewis vs. S. S. Lewis; Drayman Gray vs. Harlie Gray; James Clifford Peninger, Sr., vs. Margaret N. Peninger; Ollie Mae Brown vs. Marvin Brown; John W. Quinn vs. Doris M. Quinn; Norman Keith Hinson, al vs. Betty Joe Merritt Hinson; Walter W. Beckles vs. Eloise M. Beckles; Ed Gaines, al vs. Annie Gaines, al; Leroy Lee vs. D. A. McDonald, al; Elizabeth McMillan vs. Roy Jackson; Irving Covington vs. Roy Jackson; D. F. McDonald, al vs. W. H. Fields, al; W. M. Johnson, al vs. Charles E. Hayable; Great American Insurance co. vs. Donnie Farrell.

##### For Trial Tuesday—

D. A. McDonald, Jr., vs. Dan McCrummen; Fester Martin vs. Jacob McK. Lawhon, al; Insurance Service of Sanford vs. A. C. Burns; Roy V. Noah vs. Mrs. J. F. Morris, al; Jessie Currin vs. Clarence R. Beaver; Essie G. Currin vs. Clarence R. Beaver; Christian E. Maples vs. Mattie V. Horton,

#### REVIVALIST



THE REV. CARLTON THOMAS of Macclenny, Fla., who will conduct revival services at Rosindale Baptist church beginning Monday, September 15. Services will be held each evening at 7:30. The Rev. J. T. Wood of Southern Pines is pastor.

Rosindale church is located on the Sweetheart Lake road, two miles east of Highway 1, north of Southern Pines.

al; Bell Harrington, admrx., al vs. Clyde Hunt; C. G. Cole vs. John Paul McIntosh, al; J. T. Smith vs. Bertha Smith, al; Catherine McNeill Burns vs. John Francis Burns; D. A. McDonald, Jr., vs. Dan McCrummen, al; Celina B. Painter vs. S. A. Causey, al; Bobbie Lee Caddell vs. Julius Caddell; Carolyn Biby, al vs. Charles McPeck.

#### MOTION DOCKET

Moore County vs. Charlie McNeill, al; Ed Gaines, al vs. Annie Gaines, al; Hubert Robinson, al vs. Lea Person, al; Garland McPherson, al vs. Van B. Sharpe, al; William D. Sabiston, Jr. vs. Van B. Sharpe, al; Van B. Sharpe vs. Garland McPherson, al; Charles T. Sinclair, Sr., al vs. Moore Central Railroad Co.; A. R. Massey Coal Co. vs. Van B. Sharpe, al; Charles W. Breneman Co. vs. Van B. Sharpe, al; Thomas Keith Atkinson vs. Van B. Sharpe, al; Pinehurst Warehouses, Inc., vs. Van B. Sharpe; C. A. McLaughlin vs. T. H. Harrington, al; D. G. Dupree vs. Jack Davis.

W. S. Bushby, al vs. Van B. Sharpe, al; W. Ames & Co. vs. Van B. Sharpe, al; Master Manufacturing Co. vs. Van B. Sharpe, al; F. F. Weishaar Co. vs. Van B. Sharpe, al; Marice L. Bowden, al vs. Mary A. Snipes; H. R. Lambert vs. Garland S. Moore; Eula Mae Nall vs. L. W. Nall; Swannie L. Freeman, al vs. C. E. Williams; Sandhills Broadcasting Corp. vs. John C. Green, Jr., al; W. H. Spivey, al vs. W. T. Fuquay; Judson Dunbar Ives vs. Margaret A. Holder, al; K. R. Keith vs. Taylor Chemical Co.

Barbara Jean C. Queen, al vs. Thomas Pope Queen, al; Willie Allsbrook vs. U. T. Hite; J. E. Allen vs. Jonah Allen, al; Gordon Keith vs. Taylor Chemical Co.; Glen Gray Keith, al vs. Taylor Chemical Co.; J. O. Ferguson, al vs. Sam C. Riddle, al; Marion D. Blue vs. U. Z. Dockery; James Edward Pugh vs. Wiletha M. Pugh; Catherine McNeill Burns vs. John Francis Burns; Ola F. Pressley vs. Wade Pressley; Bessie R. Sheffield vs. Otis Bryant; D. A. McDonald, Jr., vs. Dan McCrummen, al; J. J. Bannigan, al vs. W. W. Sherman, al; National Surety Corp. vs. Van B. Sharpe, al.

#### SUPPLEMENTAL CALENDAR

Maggie Lunday vs. R. L. Lunday-T. B. Wilder; R. G. Gordon vs. E. C. Maness, al; Joseph Levey vs. A. L. Luff, al; Raymond J. Andrews vs. Vera Andrews; Lee Hardware Company vs. L. S. McLaughlin, al; J. W. Jackson, al vs. J. Thomas, al; Luther McPherson vs. Walter Barrington, Jr., al; T. S. Van Namen vs. S. R. Jellison, al; Harold Green, al vs. Nick Rapatas; John I. Primm vs. E. E. Hardy; W. M. Holt, al vs. T. Sloane Guy; George M. Blue vs. John Blue, al; Town of Southern Pines vs. J. E. Hasty, al; Bessie Horner Brooks vs. L. R. Reynolds, al; Wattie Bell vs. Maggie Bell; Carl Parrish vs. Emma Mae Parrish; K. B. Dowd vs. R. C. Fields, al; J. D. Parker vs. Clarence L. Smith, al.

Jennie B. Teeter vs. Fred B. Teeter; Mary Williams vs. Willie Williams; Dr. Chas. T. Grier, al vs. Lessie Graves Brown, al; Howard I. Estey vs. Margaret A. Estey; J. Pleasants Hines vs. Loretta Hines; George James, Jr. vs. Lottie James; W. C. Garner vs. Banks Wilkins, al; S. S. Clapp, al vs. Alex Frye; N. C. Preparatory School for Boys vs. John F. Anthony, Jr., al; W. T. Hunt, vs. C. A. Walker, al; Standard Oil Co. vs. W. R. Clegg, Jr.; John I. Primm vs. W. B. Guin; Victoria P. Messick vs. John L. Messick; J. A. Spencer vs. Dan Carter; Hessie Banner Stewart, al vs. A. L. Boykin, al; Lucy McDonald al vs. E. J. McIntosh, al; Selma Richardson

vs. Alton Richardsop; E. C. Sinclair vs. Carthage Warehouse Corp.; Marietta Barnhill Ryals vs. Early John Ryals; P. S. P. Randolph, Jr. vs. W. R. Clegg, Jr., al; Roy D. Keehn, al vs. W. D. Buffalo, al; Horatio A. Goins, Jr., vs. Catherine T. Goins; Laverne Wesley Harris vs. Anette Cagle Harris; R. F. Carter vs. Clyde T. Dunn; Mrs. Hurley D. Scarborough vs. C. E. Scarborough; Alton D. McLean vs. Margaret McLean; Ervin Davis vs. Alma Davis; Lela McNeill vs. W. C. Sellars; North Carolina Utilities Comm. vs. Frederickson Motors Express al; Luna Hilburn vs. W. M. Hilburn; L. M. Daniels vs. Florence M. Deacon; Ophelia Harrington vs. James Harrington; R. A. Taylor vs. Utey Johnson, al; R. O. Taylor vs. Everett Lee Kelly, al; R. H. Brady, al vs. Tracey Jones; Southern Pines Warehouses vs. A. O. Monroe, al; Edgar D. Jenkins vs. Almo O. Jenkins; David Hannon vs. Hester Watson; Mrs. Zannie Maness vs. Charles Frank Maness; Walter F. Parrish vs. Mary Alice Parrish; Innor Wilson Dowd vs. Tommy Dowd; Kelly Briggs vs. H. M. Arnold, al; Ben T. Chalfinch vs. Loren Chalfinch; Herbert Spivey vs. Ernest Johnson; W. H. Goins vs. J. E. Hasty,

al; Hubert L. Honeycutt vs. Christine S. Honeycutt; M. M. Pope vs. I. L. Hicks. Ethel Carter vs. C. A. Carter; Thomas T. Ritter vs. Helen Major Ritter; Grace T. Tanner vs. Tamadge W. Tanner; Bertie S. Bey vs. Frank Murray Bey; J. B. Dilling vs. Annie King Dilling; Dewey F. Britt vs. Mettie Tucker Britt; Thomas Keith Atkinson vs. Van B. Sharpe, al; W. Carl Wilson, al vs. W. Arthur Gaines; Jessie Dunlap vs. Wilson Goins; M. J. McLean vs. E. T. Hardy, al; J. L. Hudson vs. May Jewelry Co.; James McLaughlin vs. Essie McLaughlin; D. O. Caddell vs. D. E. Cole; Cornie McLaughlin, al vs. H. I. Ogburn; J. R. Funderburk

vs. W. W. Matthews, al; James Hasty vs. Hannah Stevens Hasty; Pinehurst Warehouses, Inc. vs. George Hunter; Wilbur Stephens vs. Sam Comer; Betty King Smith vs. Herman Hugh Smith; Will Muse vs. Bessie Hunsucker Muse; W. S. Galloway vs. Leon Christian; Rebecca Goins D. Washington vs. Joseph Washington; Dorothy Maririno vs. Stephen Anthony Ma-

rino; C. M. Phillips vs. Ruth Boggs; Peter Kelly, Jr. vs. Mary Maness Kelly; W. B. Holliday vs. Graham Grant; M. T. Britt vs. Susie B. Britt; Bennie Robbins vs. Pearlina Dean Robbins; Paul M. Van Camp vs. E. A. Britt, al; Samuel G. Rowell vs. Elizabeth Rowell; Mrs. D. H. Turner vs. James A. Douglas;

#### PILOT ADVERTISING PAYS

### Dante's Italian Restaurant

OPEN DAILY EXCEPT MONDAY AT 5 P. M.

Phone 2-8203

### New service for investors

every Sunday in  
The New York Times

Complete weekly tables of stock and bond trading on The New York Stock and Curb Exchanges, showing:

- weekly high, low and last prices
- weekly net change
- high and low for the year
- weekly sales total for each stock and bond traded

Be sure you see this new feature in the Business and Financial section—Sunday in

The New York Times  
"ALL THE NEWS THAT'S FIT TO PRINT"  
Hayes Book Shop

## Painting it yourself?

here's all you need!



**Wall-Fix**  
WASHABLE READY-MIXED PAINT

the ONE-derful, ONE-coat paint-it-yourself interior flat that saves you 1/2 the labor—1/2 the cost!

**\$4.85** per gal.  
**\$1.25** per qt.

**Only Wall-Fix is completely trouble-free for YOU to use, gives perfect results in one coat the first time...anytime!**

- one coat covers!
- pure oil-base...not a rubber-water mixture!

- self-priming!
- true decorator's flat...no shine, no glare!

- matching shades in semi-gloss!
- no spotting, streaking, ghosting, lapping!

- completely trouble-free...easily washable!
- up to 50% greater coverage per brushful!

**26 WORLD'S LOVELIEST COLORS!**  
Ready-mixed—factory-matched plus a wide range of simple color blends!

by the makers of famous *Gleem* Paints • Baltimore Paint & Color Works, Baltimore 23, Md.

## TATE'S HARDWARE & ELECTRIC CO.

## Nelly Don

custom casuals  
in suiting~



Wonderful dress with the look, the line, the texture that's in the news. Softly tailored, with infinite attention to detail... note shape of the new low-placed pockets, fine little buttons.

Banker's check coatdress, left, with dark piping accent. Red or rust with black, brown with grey. 12 to 40  
**14.95**

## Mrs. Hayes' Shop

Southern Pines, N. C.

# HILLENDALE

## Golf Range

On Midland Road between Southern Pines and Pinehurst

### Now open 8 a.m. to 11 p.m.

RAIN or SHINE

Under Personal Management of Tom O'Neil

.....

You are cordially invited to inspect this beautiful new range featuring the latest equipment

.....

P. S. A courtesy baby sitter for your convenience from 10 a. m. to 4 p. m.

**BILL TRAIN, Professional**  
MEMBER PGA  
Phone 2-6344

COME AND SEE OUR "KIDDIE KORRAL"