

### Stratton, McDonald Pool Knowledge In TV-Radio Service Business Here

Will J. Stratton and Lyle D. McDonald, Jr., have entered business together as the Television and Repair Service, repairing all makes of TV and radio, also selling and servicing the Bendix line. Other wanted lines are to be added.

They have a workshop on West Vermont Avenue extension and may be reached by telephone at 2-4652 by day and at their home phones, 2-6934 and 2-7571, at night.

Mr. Stratton was the first person in this area to go into the television business, hanging out his shingle in the summer of 1950. At that time he was considered somewhat over-optimistic, as there was not a single set in the Sandhills, except possibly one or two of an experimental nature. In fact, the whole industry was still in the experimental stage at that time, and its mushrooming into an economic giant, penetrating millions of homes, came with a rush soon after.

In the past three years, of course, TV antennae have blossomed all over Sandhills roofs and Mr. Stratton is seen to have been not fanciful, but foresighted.

As a matter of fact he was one of the first persons anywhere to become interested in television, which he studied with RCA in 1929. At that time it was in a very early experimental stage. Mr. Stratton, a horseman, who at one time managed stables here, continued with it as an active interest and sideline.

A Britisher born, he entered the Royal Navy when too young to be

sent to sea, and was assigned to Marconi House in London, where he was in on some of the earliest broadcasting, and learned radio operation from the bottom up. His naval duty for the next few years was all in the field of radio, and in 1927 while stationed on the African West Coast he had two weeks of study under Marconi himself.

To this knowledge and experience have been added, in the person of Lyle McDonald, a young man who has just completed studies of the most up-to-date variety. Mr. McDonald has recently graduated from a year's course at the DeForest School of Electronics at Chicago, Ill.

He is the son of Mr. and Mrs. L. D. McDonald. He entered the Navy while a student at Southern Pines High school, but kept up his studies and returned in Navy uniform in June 1947 to secure his diploma.

In the Navy he was trained as a hospital corpsman and, for a time after his discharge, was employed by the Moore County hospital. He then went with Piedmont Airlines and was in their employ for three years at Cincinnati, Ohio, and Charlotte. Determining on a career in electronics, he worked at various jobs in Charlotte until the opportunity opened up to him to attend the DeForest school.

The 1952 average Irish potato yield is estimated at 120 bushels per acre, compared to 141 bushels in 1951 and a 10-year average of 126 bushels.

### She Sings Southern Mountain Songs



SALLY ALLEN

### Sally Allen, South Carolina Singer, Will Offer Varied Program At Forum

Miss Sally Allen, soprano, will present a very varied program as concert artist at the next meeting of the Pinehurst Forum, Thursday evening at the Pinehurst country club.

The young singer, a native of Greenville, S. C., who now lives in New York City, specializes in southern mountain songs and will sing many of these as part of her program. The program will end with the singing of Christmas carols, in which the audience will be invited to join.

Miss Allen's program will open with "Come Unto Him" and "Rejoice Greatly" from Handel's The Messiah, and "Jesu Bambino" by Pietro Yon.

The second part will comprise German lieder, four numbers from Schubert and one of Brahms. The third part will be all in English, the numbers being "The Willow Tree," sung by Desdemona in "Othello;" "Early One Morning," a 17th century English folk song; "Greenleeves," a 16th century melody arranged by Granville Bantock; "Drink to Me Only With Thine Eyes" in an arrangement

by Harry Wilson, and "Oliver Cromwell," arranged by Benjamin Britten.

After the intermission Miss Allen will sing four mountain songs, the product of three different states—"The Riddle Song" of Kentucky; "Tomorrow, Maw, I'm Sweet Sixteen" of the Alabama hills; "I Wonder As I Wander," of North Carolina, and Kentucky's "As I Went Out One Mornin'."

The artist will be accompanied by Miss Evelyn Vance at the piano.

The Country Club's weekly buffet supper will precede the concert, which is due to begin at 8:30 o'clock.

#### DUNES CLUB CLOSING

The Dunes Club, popular local night spot, closed after the show Saturday night. It is scheduled to reopen on or about February 25 for the spring season, according to word from the management.

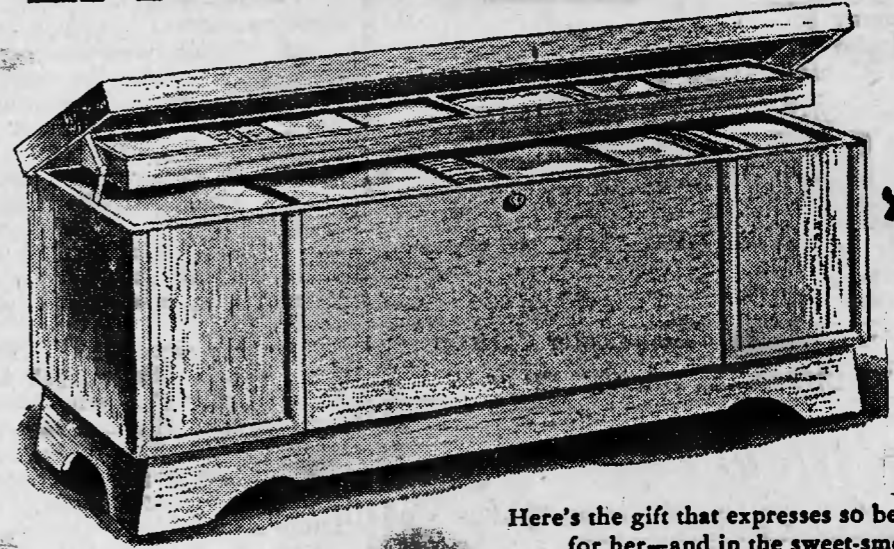
FOR RESULTS USE THE PILOT'S CLASSIFIED COLUMNS

### CARTHAGE FURNITURE CO., Says: . . .

THIS CHRISTMAS—GIVE HER A THRILL LIKE THIS:



## Give her a LANE CEDAR CHEST



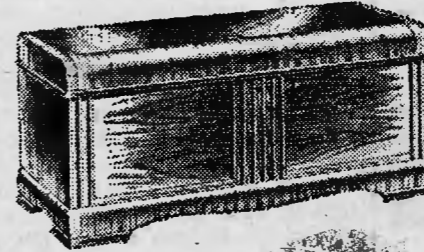
Stunning 48" blond modern chest with self-rising tray.

**\$49.95**

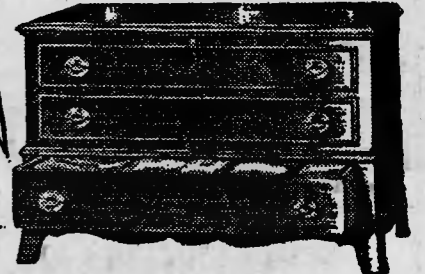
Terms

Here's the gift that expresses so beautifully your love for her—and in the sweet-smelling fragrance of a Lane, she can start now gathering all those things for more gracious living in a home of her own! Come in now and select hers.

AS ADVERTISED IN LIFE



Handsome waterfall design in rich American walnut—big 48" size. Has self-rising tray. **\$59.95**



Mahogany console design with roomy drawer in base—a chest that blends well with any period furnishings. **\$79.95**

ONE GARMENT SAVED PAYS FOR A LANE! **CARTHAGE FURNITURE COMPANY**

Phone 2011

We Deliver

### Fields Plumbing & Heating Co.

PHONE 5952

PINEHURST, N. C.

All Types of Plumbing, Heating,

(G. E. Oil Burners)

and Sheet Metal Work

# ECHO SPRING

4 YEARS OLD KENTUCKY STRAIGHT BOURBON

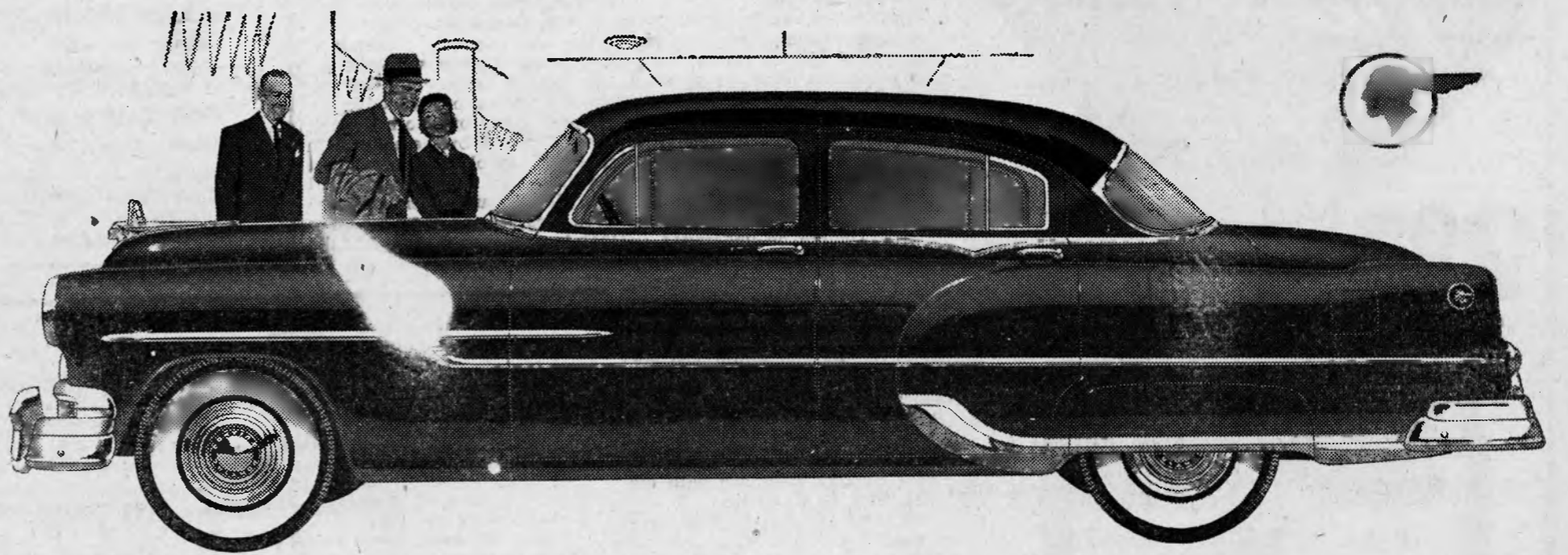


**\$3.65** 4 1/2 qt. **\$2.30** pint

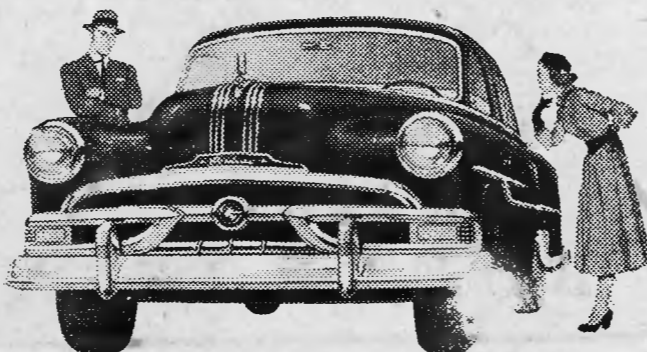
86 PROOF • ECHO SPRING DISTILLING COMPANY, LOUISVILLE, KY.

### NOW ON DISPLAY - THE BEAUTIFUL

# 1953 Dual-Streak Pontiac



## A GENERAL MOTORS MASTERPIECE!



DOLLAR FOR DOLLAR YOU CAN'T BEAT A PONTIAC!

★ COMPLETELY NEW "DUAL-STREAK" STYLING

★ NEW LONGER WHEELBASE ★ LONGER, LOVELIER, ROOMIER BODIES

★ NEW ONE-PIECE WINDSHIELD—WRAP-AROUND REAR WINDOW

★ NEW POWER STEERING ★ SPECTACULAR NEW OVER-ALL PERFORMANCE

We feel very proud today. For we have in our showrooms a motor car masterpiece—the great new 1953 Dual-Streak Pontiac, a great new beauty, a great new performer and a great new value.

This newest and finest of Pontiacs is completely new in styling inside and out. It has a longer wheelbase, more leg room, more hat room, more hip room.

This new Pontiac gives you spectacular Dual-Range\* performance. And now, for the first time, you can have Pontiac Power Steering as optional equipment.\*

We do more than invite you, we urge you to come in and see this great General Motors value, the 1953 Dual-Streak Pontiac. You have never seen a car so wonderful at anywhere near its price!

\*Optional at extra cost.

**SOUTHERN PINES MOTOR CO.**

HERBERT N. CAMERON

A. A. HOWLETT