

County Schools To Open September 1; Four Districts Given Added Teacher

The Moore county schools will open for the 1954-55 term on September 1, it has been announced by County School Superintendent H. Lee Thomas.

The opening this year is a day earlier than the 1953 opening, Mr. Thomas stated.

"We are expecting another fine year," Mr. Thomas said, "with some schools looking for perhaps an increased enrollment over that of the 1953-54 term."

As a result of increased attendance during the past year, four schools have gained an additional teacher, Mr. Thomas stated. Those gaining an extra teacher include a high school teacher at Cameron, one in the Carthage elementary department and one in the Aberdeen elementary school. The Robbins high school department also gained an additional teacher.

Many improvements to the various county schools will greet the pupils when they enter the classrooms on opening day.

Most of the teacher vacancies in the schools throughout the county have been filled and it is expected that the remaining appointments will have been completed by the time the opening rolls around in September.

United States cotton exports this year are expected to increase 600,000 bales over 1953.

Good Pasture Is Best Hog Feed, Dinan Reports

By JOHN A. DINAN
Assistant Farm Agent

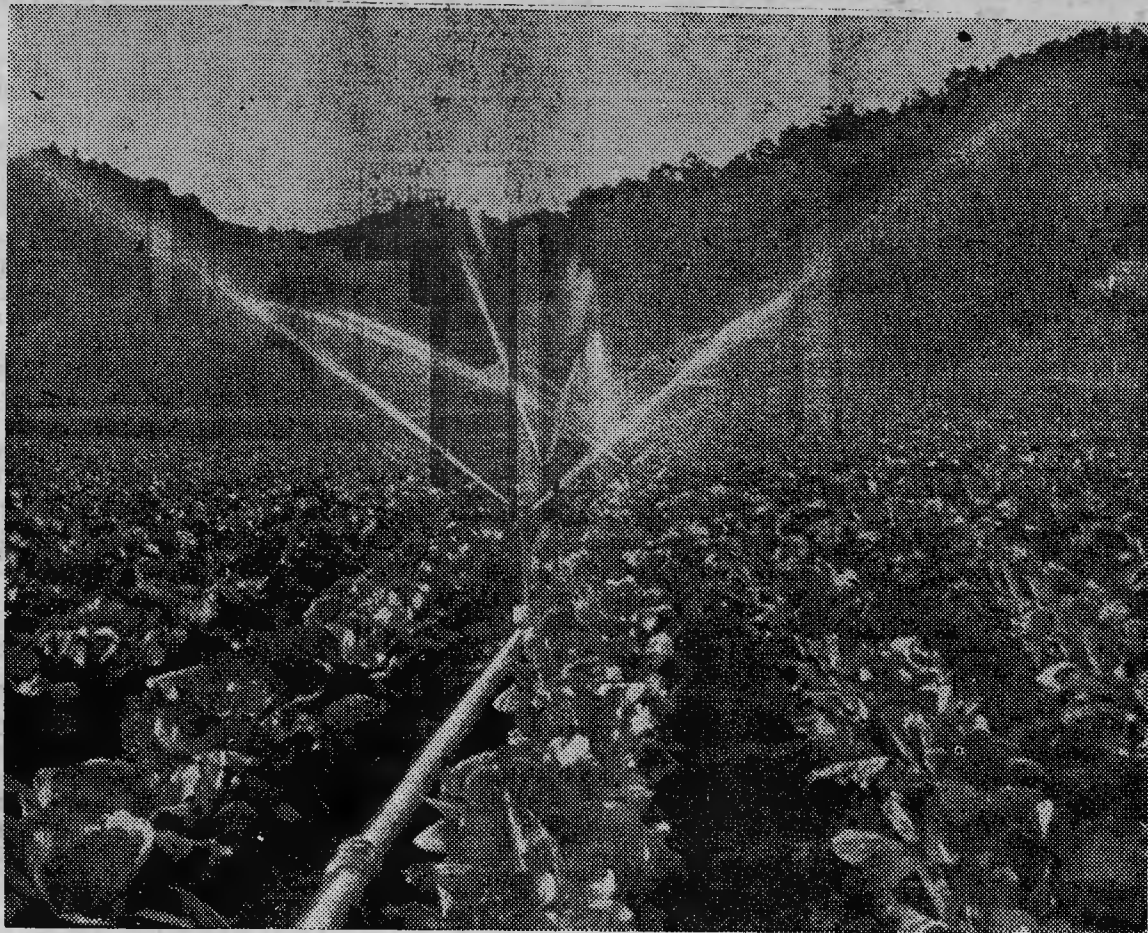
Hogs need a balanced diet just as any other animal and the easiest way to properly feed a hog is to place him on a good pasture with plenty of shade and fresh water. Of course, a grain ration fed along with the pasture will greatly step up gains. A few of the advantages of good pasture for hogs are:

1. Saves 15 per cent of grain required in growing hogs.
2. Saves 30 per cent of protein feed.
3. Saves minerals.
4. Increases milk flow of sows.
5. Prevents diseases which live in soil of old hog lots.
6. Prevents worms by avoiding infested soil.
7. Less labor required to care for hogs when they are on pasture.
8. Provides exercise that is valuable, especially for sows.
9. Manure is evenly distributed over field and none is wasted as in the case where pigs are fed in dry lots.
10. Reduces time required to produce market hogs.

Good pastures require careful good management after they are established. The soil types vary a great deal in this section of the state and the crop you plant for pasture will be determined largely by the type of soil on your farm. Ladino clover, small grain, oats, lespedeza, ryegrass, crimson clover, and soybeans are all good pasture crops and can save your feed bill when utilized as pasture. Plan now to seed permanent pasture this fall by getting soil samples taken now.

The Great Smokies Park and the Blue Ridge Parkway, which have become the most visited national park facilities in the land during the past few years, meet near Mile-High Overlook west of Asheville, where a new section of the parkway was completed in 1953 from U. S. 19 at Soco Gap to the boundary of the Great Smoky Mountains National Park.

The wharf at the North Carolina State Terminal, Morehead City, can berth 4-500 foot vessels and one petroleum tanker at one time.



MORE WATER MEANS MORE MONEY—Supplemental irrigation, such as is shown watering a fine field of early cabbage, is evaluated in a booklet recently published by the agricultural development department of Carolina Power & Light Company. Over 500 Carolina farmers who use irrigation were interviewed and their results appraised. The new booklet is available without charge through most farm agents or the nearest CP&L office.

FINAL CLEARANCE

Ladies' Shoes

\$4.99 \$3.99

\$1.99

Spring and Summer SHOES

Values up to \$16.95

McIVER'S SHOE STORE

Opposite Post Office
SANFORD, N. C.



Sure To Please!

Whatever the occasion... birthday, wedding anniversary, just feeling good... flowers will make it extra special.

See Us Today



Southern Pines Florist
570 S. W. Broad
Tel. 2-3111

OLD CHARTER

Seven Years Old
KENTUCKY STRAIGHT
BOURBON WHISKEY



\$3.40
Pint

\$5.45
4 1/2 qt.

KENTUCKY STRAIGHT BOURBON • 86 PROOF • OLD CHARTER DISTILLERY CO., LOUISVILLE, KY.

**BEGINNING
FRIDAY . . . 9:00 a. m.**

Clearance SALE

LADIES' ACCESSORIES

- HOSE, were \$1.39 up, now **97c**
- BELTS, were \$1.98, now **49c**
- GOWNS, were \$3.98, now **\$2.98**
- GOWNS, were \$5.98, now **\$3.98**
- BAGS, were \$2.98 up, now **\$1.98**
- HOSE, were \$1.39 up, now **97c**
- PAJAMAS, were \$3.98, now **\$2.99**
- PANTIES, were \$1.19, now **89c**
- SLIPS, were \$2.98, now **\$2.29**
- SLIPS, were \$3.98, now **\$2.98**
- SLIPS, were \$4.98, now **\$3.98**

ENTIRE STOCK of

- LADIES'—
- JERSEYS, were \$2.98, now **\$1.00**
 - BLOUSES, were \$2.98 up, now **\$1.98**
 - SKIRTS, were \$2.98 up, now **\$2.88**

LADIES' SUITS

Were \$19.95 to \$39.95
now **\$10.99 to \$16.99**

Ladies' COATS & TOPPERS

Were \$9.95 to \$39.95
now **\$6.99 to \$19.99**

LADIES' SWEATERS

Were \$2.95 to \$6.98
now **\$1.99 to \$4.99**

ENTIRE STOCK of

Dresses

Included in Our

2 for 1 SALE

YOU BUY ONE DRESS
WE GIVE YOU ANOTHER ONE
OF YOUR OWN CHOICE

FREE

(Must be same price or cheaper)

All Ladies'
Swim Suits
Shorts
Ped'l Pushers
- were -
\$2.98 to \$11.95
1/2 PRICE

Men's
Sweaters
were \$7.95
now **\$4.99**

Special Lots
Men's Shoes
were to \$12.95
now
All - \$4.99

Boys' Suits
were \$19.95
now **\$12.95**
were \$22.50
now **\$14.95**
were \$27.50
now **\$16.95**

GIRLS

DRESSES	SKIRTS	COATS
were 3.98 up	2.98 up	5.95 up
now	now	now
All 1.99	\$1.00	\$4.99

BOYS

JACKETS, were \$4.95, now **\$2.98**
PANTS, were \$5.95, now **\$2.98**

MEN'S SUITS

Were—
up to \$45.00, now **\$29.95**
up to \$56.50, now **\$39.95**

SPORT COATS

Were \$29.95, now **\$19.95**

JACKETS

Were \$5.95, now **\$3.98**

PANTS

Were up to \$15.95, now **\$7.95**

SHOES

Were up to \$14.95, now **\$7.99**

HATS

Were \$7.50, now **\$4.99**

SHIRTS

Were \$3.98, now **\$2.98**

SPORT SHIRTS

Were \$2.98, now **\$1.88**
Were \$3.98, now **\$2.29**
Were \$4.95, now **\$2.88**
Were \$5.95, now **\$3.29**

SWIM SUITS ALL 1/2 PRICE

STRAW HATS All \$1.29

The Quality Shop

Poplar Street

ABERDEEN, N. C.