

Basketball Summary

By GEORGE A. SHORT JR.

After the holiday rest Moore County basketballers returned to the hardwood last week and plenty of action featured the week's play. Vass girls edged West End 51-49 as West End's strong boys' team defeated Vass 46-39.

Vass—West End

Thomas led the Vass sextet with 23 points as Caviness paced West End with 21. Carter netted 14 tallies for West End's boys and Apple scored 12 for Vass to lead the point-getting for their respective teams.

Robbins—Troy

Robbins conquered Troy in two non-conference clashes as Robbins' girls prevailed 77-53 behind McCrimmon's 38 points and the Bearcats won the night's final contest 76-54 to keep their boys' team undefeated. Britt, Brady and Allen paced Robbins on defense in the girls' contest. Jimmy Freeman with 26 points and Jackie Hussey with 20 tallies spearheaded the Bearcat offensive which maintained a 47-20 spread at halftime.

Southern Pines—Carthage

Carthage's girls bopped Southern Pines 52-30 and the Blue Knights edged the Bulldogs 51-49 in the boys' contest in two

thrilling contests Friday night.

The Carthage sextet led by a narrow margin at halftime but really turned on the steam in the second half to win going away. Clara Matthews, high scoring Carthage forward, scored 30 points. Anike Verhooff tallied 15 to pace the Southern Pines scoring.

Lanky Roger Verhooff tossed in 32 points which energized the Blue Knights enough to nip the Bulldogs in the nightcap. The smaller Bulldogs, paced by the timely jump shots of Robbie Felton and Mose Boyette, almost pulled the game out of the fire in the closing seconds but the Blue Knights held. Felton pumped in 16 points to lead the Bulldog scoring.

West End—Pinehurst

West End's girls, who dropped a two-point decision to Vass Wednesday night, had determination in their shots as they humbled Pinehurst's Rebelettes 73-62 Friday night. Pinehurst's boys, however, throttled the West Enders 56-51 in the night's final contest to keep their Moore County record unblemished.

West End's lassies pulled away from the Rebelettes in the second half after leading by a narrow 34-32 margin at halftime. Nancy Caviness and Elsie Martin led the Purple and Gold offense as they netted 31 and 22 points, respectively. Pinehurst's scoring was pretty evenly divided as Alice Garrison tallied 24 points. Sandra Burkman tallied 20 and Barbara Hunt accounted for 18.

Pinehurst Rebels' victory was engineered by Wayne Hardy, with 14 points, Tim Robertson, with 12, Robert Garrison and Kenny Whitesell, who tallied 10 points each. Leading West End was Bob Carter, with 13 points and Don Porter, who scored 11.

Robbins—Highfalls

Fast moving Robbins defeated nearby rival Highfalls 86-62 in the girls' contest and 60-35 in the boys' last Friday night. The triumphs gave the Elsie girls a 4-1 conference record and the Elsie

boys a 5-0 conference standing.

Robbins' girls grabbed a 36-23 halftime lead from which they coasted on to the important win. McCrimmon poured in 43 points and Hunsucker tallied 22 to power the Robbins offense. Starving on defense for Robbins were Britt, Brady and Allen.

The Highfalls scoring attack was paced by S. Dupree, who tallied 29 points, and J. Dupree, who netted 21. N. Maness and McNeil were defense standouts for Highfalls.

In the boys' clash Jimmy Freeman, the Bearcats ace guard, scored 15 points and Jerry McNeil bucketed 13 to set the pace. Freeman, McNeil and Culbertson shone defensively. High scorer for the contest, however, was Highfalls forward J. Upchurch, who hit 19 points while T. Phillips stood out defensively for Highfalls.

Cameron—Broadway

Cameron's girls led Broadway 23-22 at intermission but couldn't maintain their lead as Broadway came back strong in the second half to win the contest 50-36. Cameron's boys, however, nipped the Broadway five 36-34 in the second game.

Phillips was top man in Cameron's offense with 12 points as M. Thomas was tops in scoring for Broadway with 14.

Friday night's contests bring together the undefeated Robbins Bearcats and Pinehurst Rebels, Carthage and Highfalls, Aberdeen and Southern Pines, Vassdeen and Cameron, and Lakeview and Farm Life. These contests should all be thrillers and may shuffle the standings as the halfway mark approaches for the Moore County hardwood season.

One of the worst things a poultryman can do is to pack eggs in the case while they are still warm. Let them cool in baskets before packing, advise Extension poultry specialists at North Carolina State College.

WITH THE Armed Forces

Army Sgt. Raymond K. Frye, 25, son of Neil A. Frye, Carthage, recently participated with the 3rd Armored Division in "War Hawk," a two-week field training exercise in Germany.

Sergeant Frye, who wears the Combat Infantryman Badge, the Bronze Star Medal and the Purple Heart among his decorations, is a section sergeant in Company C of the division's 45th Armored Medical Battalion. His wife, Dorothy, is with him in Germany.

In the Army since 1947, the sergeant arrived overseas on this tour of duty last June after an assignment at Madigan Army Hospital, Tacoma, Wash.

Farmers were the most important single group of buyers of farm real estate in the 1955-56 season. They bought 65 per cent of all farms sold. About two-thirds of all farms purchased were financed with some form of credit, report specialists with the U. S. Department of Agriculture.

Keystone Income Fund

Series K-1

A diversified investment in securities selected for current INCOME.

THOMAS DARST & CO.
McKenzie Bldg.
Southern Pines, N. C.

Please send me prospectuses describing your Income Fund, Series K-1.

Name _____
Address _____
City _____ State _____

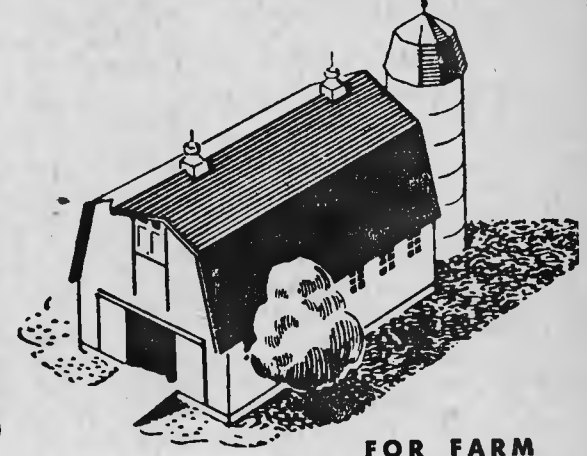
In 1950 only three per cent of television sets Today 53 per cent marketing specialists with the U. farm families in the country had have purchased them, report S. Department of Agriculture.

SOUTHERN PINES WAREHOUSES, Inc.

SAYS

SAVE TIME! SAVE MONEY!

Buy your Building Materials from your local established dealer



FOR FARM

Why go to the expense and trouble of shopping around when you're looking for building materials? We have complete stocks of well-known brands and our prices are right! Whether you need a few feet of lumber or a complete bill of materials for a large job, we'll give you the best service we know how. This includes free advice and counsel on any building or remodeling project gained from our many years in the building material business. We hope you will drop in soon. We'll be glad to work with you.



FOR HOME

Come in the next time you're in town!

HEADQUARTERS FOR JOHNS-MANVILLE BUILDING MATERIALS

EASY MONTHLY PAYMENTS CAN BE ARRANGED

Southern Pines Warehouses, Inc.

Phone 2-7131

"Everything For The Builder" OUR 32nd YEAR

Southern Pines, N. C.

Wolmanized
PRESSURE-TREATED
LUMBER
STOPS ROT AND TERMITES

Sandhill Builders Supply Corporation

Service-Quality-Dependability
Tel. Windsor 4-2516
Pinehurst Rd.
Aberdeen, N. C.

ACE UPHOLSTERING SHOP
4211 Bragg Blvd. FAYETTEVILLE, N. C.
FURNITURE REPAIRED AND REBUILT
WORKMANSHIP GUARANTEED BOTTOM PRICES
Platform Rocker, \$22.50 up
Couch, \$28.95 up Sofa, \$48.95 up
MRS. D. C. THOMAS, Representative
Southern Pines d61f

Mid Pines Club

Southern Pines
Where Golf and Hospitality Are Traditional
MANAGED BY
The Cosgroves
Julius Boros, Professional

86 PROOF

Old Gold

Straight BOURBON Whiskey

\$2.10 PINT

\$3.35 4/5 QUART

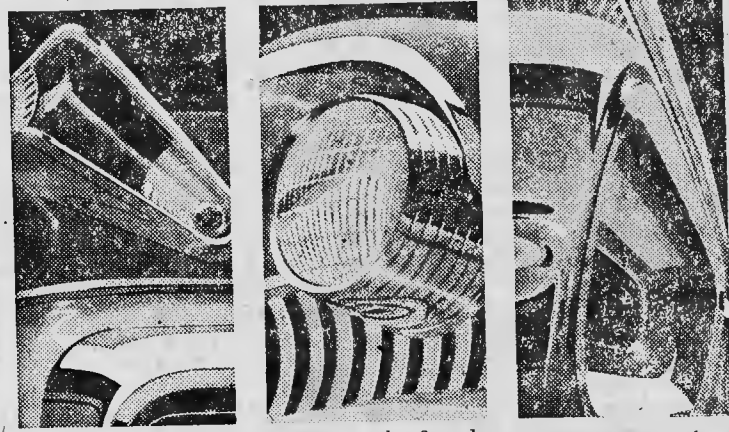
THE BOTTLE COMPANY
LANSING, MICHIGAN

THIS IS THE BIG M FOR 1957

Styling from dream-cars



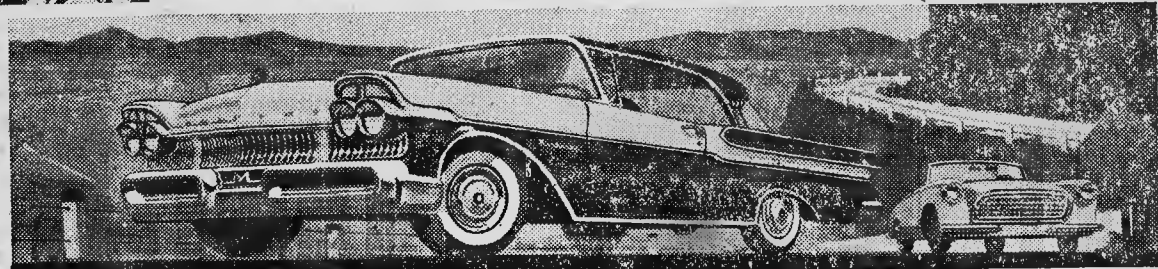
FAR BIGGER IN EVERY IMPORTANT DIMENSION... This year Mercury has grown bigger in every important dimension. For example, there is more headroom, leg room, shoulder room, hip room.



BOLD, IMAGINATIVE LINES... Here is the first dream car you can own... the first car you can buy with Dream-Car Design. Here's distinctive, distinguished styling shared by no other car.

size from expensive cars

action from sports cars



WIDEST RANGE AND CHOICE OF POWER IN MERCURY HISTORY... A 290-hp TURNPIKE CRUISER V-8 engine is optional on all models. In the Montclair series the standard engine is a 255-hp Safety-Surge V-8 with a Power-Booster Fan that saves horsepower other cars waste. A 255-hp Safety-Surge V-8 is standard in the Monterey series. A special M-335 engine (335-hp) is available at extra cost in Monterey models equipped with standard transmissions.



price just above small cars

Never before has so much bigness and luxury cost so little. And Mercury introduces features you can't buy at any price in other cars. Mercury's new Dream-Car Design is Mercury's alone. It's sleek, daring, clean-cut... makes other cars look plump and old-fashioned. Mercury's exclusive Floating Ride is the finest

combination of bump-smothering features ever put between you and the road.

Check the low-price tags in our showroom. You'll find you can get a new Big M for little more down—or per month—than for the lowest price cars. And what a lot more you get!

ALL-WEATHER COMFORT IS NO LONGER A LUXURY! MERCURY'S NEW CLIMATE-MASTER COMBINES AIR CONDITIONING AND HEATING IN ONE LOW-COST SYSTEM!

STRAIGHT OUT OF TOMORROW **MERCURY for '57** with DREAM-CAR DESIGN

JACKSON MOTORS, INC.

N. C. Dealers License No. 1909

U. S. Highway 1

Phone 2-5822

