



SOUTHERN PINES ENTRIES in the State Junior Chamber of Commerce Tennis Tournament currently underway on the town courts are, from left, Dick Thomasson, John McMillan, George Little, and Kenny Little. They are being sponsored by the local Jaycees. The tournament is the largest ever held in the state for junior competition and exceeded the sponsors' expectations by about 15 entries. Finals are scheduled Saturday. (Pilot photo)

EXHIBITION MATCH TOMORROW NIGHT

Largest Jaycee Tennis Tournament In State's History Started Here This Morning; 52 Battling For Top Spot

Some 52 youngsters from 23 North Carolina towns and cities flocked into Southern Pines yesterday for the State Junior Chamber of Commerce tennis tournament, which began this morning on all four courts in the town park.

Exceeding by about 15 the original number expected, the contestants are making up what quite likely is the largest junior tournament ever held in the state. Generally, there are less than 40 in the State Jaycee tournament.

The local Jaycees, sponsoring the three-day event, said that most of the boys had been taken into local homes during their stay here.

Play will go on mornings and afternoons, with the finals in both singles and doubles scheduled for Saturday.

Rain, which held up play a few hours today, is expected to clear up and play continue on schedule throughout the rest of the tournament.

Malcolm Clark, a member of the University of North Carolina tennis team and director of Southern Pines tennis program, is directing the tournament for the Jaycees. Norris Hodgekins, Jr., is handling arrangements for the Jaycees.

Tonight at 7 o'clock all contestants have been invited to an outdoor picnic at the Elks Club and will be feted by the Jaycee chapter.

County Golf Meet Opened To Juniors

The Moore County golf tournament was expanded this week to include a junior tournament if enough people show an interest.

Harry Davis, who is chairman of the tournament, said today that any youngster under 18 years of age was eligible for the junior tournament. Entry fee is \$3, the same as the regular tournament, and the prizes will be the same. He said that about three flights would probably qualify.

"We've had several inquiries from boys who wanted to play," he said, "and because of that we decided to stage a separate event. If it is successful, we'll probably do it every year."

In the regular tournament, almost two flights have qualified to date. Most players, including defending champion Bill Woodard, are expected to qualify next Friday and Saturday.

Play begins July 6. Andy Page, assistant pro at the Southern Pines Country Club where the tourney is being held, reported today that the course was in pretty good shape and would be "extra good" by next weekend.

Highlights of the tournament will be a match tomorrow (Friday) night between two of the South's top-ranking players, Allen Morris of Charlotte and Sam Daniel of Leaksville. Morris is seeded No. 1 in the State and Daniels No. 2.

After the singles match, they are expected to team for doubles play against Malcolm Clark of Southern Pines and Richard Makepeace of Sanford, who recently won the doubles in the Winston-Salem Invitational.

Players in the tournament are sponsored by 21 Jaycee clubs throughout the state, each of which could send from one to four boys. Each club held elimination rounds if possible and the contestants here represent the best of the junior players in the state today. All players are 18 or under.

Today's pairings: Jack Hepting, Asheville, bye; Chip Owen, Asheville, bye; Larry Windley, Washington, bye; Brooks Hayworth, Winston-Salem, bye; Comer Hobbs, Charlotte, bye; Max Hawkins, Wilmington, bye.

George Little, Southern Pines vs. Billy Hilton, Lexington; Rock Teague, Thomasville, vs. Ed Dunn, Rocky Mount; John Talley, Gastonia vs. Brick Oettinger, Chapel Hill; Dick Thomasson, Southern Pines vs. Jim Causey, Davidson.

Dick Corbett, Henderson vs.

Chamber Plans Open Meeting To Discuss New Setup

A special called meeting of the full membership of the Chamber of Commerce will be held Tuesday, July 1, at 8 o'clock at the library to discuss and vote on several changes recently proposed in the Chamber set-up. President Joe Scott announced this week.

Included in the proposals: changing the name from Southern Pines Chamber of Commerce to the Sandhills Chamber of Commerce and thus not outlining any specific boundary from which members may be drawn.

Setting up a scale for dues which would require businesses with more employees to pay a higher rate. The lowest rate under the new setup would be \$25 for individual memberships. Lowest business rate would be \$50, and the highest would be in excess of \$100, depending on the number of employees.

Scott urged a full attendance at the meeting.

Bobby Long, Elizabeth City; Lloyd Bost, Charlotte vs. Blarrie Tanner, Rocky Mount; Ken Eidsen, Elkin vs. David Nash, Chapel Hill; Bobby Griffith, Lexington vs. Jackie Spencer, Asheboro; John McMillan, Southern Pines, vs. Paul Finch, Thomasville; Lee Smith, Wilmington, vs. Bobby Andrews, Burlington.

Stanley Cocke, Asheville, vs. Phillip Horwitz, Raleigh; Ken Little, Southern Pines, vs. Fred Lopp, Lexington; Ken Oettinger, Chapel Hill, vs. Regan Harper, Gastonia; Cliff Smith, Wilmington, vs. Jim Skidmore, Burlington; Gale Eidson, Elkin, vs. Edwin Payne, Henderson; Phil Thomas, Asheville vs. Billy Turner, Henderson; Charlie Connelly, Charlotte, vs. Frank Roebuck, Salisbury; Leon Raper, High Point, vs. Jim Hart, Winston-Salem; Steve Watson, Charlotte, vs. Ken Lambeth, Lexington.

Gene Adcock, Henderson vs. Jimmy Nelson, Huntersville; Joan Angell, Granite Quarry, bye; Charles Shaffer, Chapel Hill, bye; Anderson Sherrill, Statesville, bye; Jimmy Emmons, Raleigh, bye; Tommy Redding, Asheville, bye; and Chad Ferriss, Wilmington, bye.

Seedings, as announced by Hogkins, were as follows: Jack Hepting, Asheville, No. 1; Stanley Cocke, Asheville, No. 2; Chad Ferriss, Wilmington, No. 3; Bobby Andrews, Burlington, No. 4; Jim Hart, Winston-Salem, No. 5; John Talley, Gastonia, No. 6; and Charles Shaffer, Chapel Hill, No. 7.

Here are the doubles matches, to be run off along with the singles.

Hepting and Cocke meet McMillan and Ken Little (both teams drew byes); Charles Shaffer and Oettinger (bye) meet winner of (Continued on page 5)

Operation Of Auto License Bureau Here Suspended

The automobile license bureau maintained here in the offices of the Chamber of Commerce has been closed and will remain so indefinitely, Chamber president Joe Scott said today.

He said it was closed because Mrs. S. D. Fobes, the secretary, has resigned effective July 1 and the new secretary, Mrs. Don Traylor, was unable to attend a special course of instruction for personnel operating the bureau.

It is hoped, he said, to have the bureau open again in the very near future.

Commissioners Adopt \$1,201,700 Budget For Year

\$119,000 Set Up For Building Of Agriculture Center

An allocation of almost \$119,000 for construction of a proposed agriculture building in Carthage is included in the Moore County budget for 1958-59.

The budget was prepared and released this week and, though only a summary of it appears in today's Pilot, the complete budget is on file in the Register of Deeds office in Carthage.

The tax rate of \$1.35 per \$100 valuation remains the same. This year the budget is based on total valuation in the county of \$46,500,000, an increase of one and one-half million dollars over 1957-58. Annexation of Little River and construction of several new houses, plus discovery of property that had not previously been listed, accounted for the major portion of the increase, one member of the Board of County Commissioners said.

In addition to the allocation for the agriculture building, the commissioners also set aside \$10,645 for a rural fire truck (which has already been bid on), \$7,500 for water and sewer construction at the proposed Mozur Lace plant near Southern Pines, and \$5,000 for industrial development.

Schools, which eat up about half the amount of money available to the county during the year, account for \$658,165 this year, down considerably from the \$931,419 last year. Current expenses remains about the same, \$259,351, and capital outlay, which last year was \$638,700, is down this year to \$362,000, an indication that major construction of school facilities in the county has leveled off.

The total budget this year is \$1,201,760 as compared to \$1,375,379 last year.

For operation of the health department this year the commissioners set aside \$45,350, up slightly from last year.

Hospital fees set up in the budget are \$25,000, which is to be used for certified indigent patients. The figure was only slightly increased from last year, though hospital officials requested considerably more to alleviate what they called a "growing problem of administering care to people who cannot pay for it," which those same officials described as a county responsibility.

The outside poor fund is \$12,000 this year, no increase. That fund is used for taking care of people who are unable to secure welfare assistance from any other source.

Taking the biggest bite out of the \$1.35 is the school system, which doesn't include Southern Pines and Pinehurst except on a "capital outlay" accounting. The schools take 90 cents of the \$1.35, and welfare takes 15 cents. General administration takes 20 cents, with the remainder going for the other agencies and the debt service.

Blood Program In County Dangered; Funds Are Short

Still short some \$1,600, the Moore County Chapter of the Red Cross made a last appeal today for that amount of contributions to initiate operation of a Blood Program in the county next year.

"It appears that the people of the county have decided against participating in it (the blood program)," the announcement said. "The Red Cross Chapter is holding this project open through June 30."

"At last accounting \$1,600 was still needed to assure participation in the blood program. The chapter appreciates the support of those who have contributed and regrets that the prospect of participation in what is considered a most worthy project, is so slim."

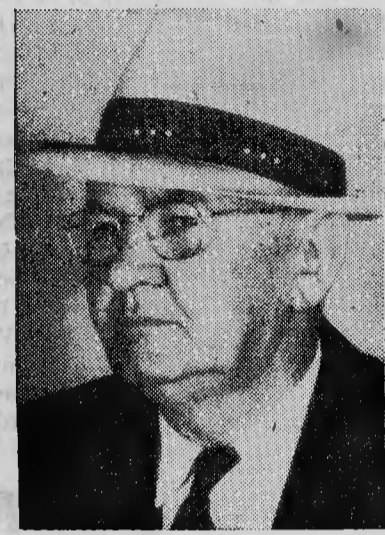
"Shortly after July 1, a final report on the project will be made."

Light Vote Expected To Be Cast In Primary Runoff Saturday

For Sheriff



CHARLES G. WIMBERLY



WENDELL B. KELLY

For Commissioner



T. CLYDE AUMAN



W. SIDNEY TAYLOR

North-South Split Seen As Geography Enters Picture

A turnout of less than 4,000 people—with some observers guessing as low as 3,500—will pick a sheriff of Moore County Saturday and decide who will represent District 5 on the Board of County Commissioners.

Candidates for sheriff are Wendell B. Kelly of Carthage and Charles Wimberly of Aberdeen. Wimberly led Kelly by 56 votes in the primary May 31, showing most of his strength in the lower part of the county.

For the commissioner's seat, T. Clyde Auman of West End wound up 356 votes ahead of W. Sidney Taylor of Aberdeen in the first primary, but did not have enough to forestall a runoff. The other candidate in the race, E. P. Hinson of West End, polled 408 votes.

As is customary, the polls will be open from 6:30 to 6:30. In Southern Pines, all voting is at the fire station on New Hampshire Avenue. Mrs. Grace Kaylor is the registrar.

Those are the bare facts of the runoff. But speculation is rife. None of the candidates seem to have "locks" on the seats they are seeking, though supporters of each would have the voters think so.

Wimberly, who served on the State Highway Patrol before resigning to make the race for sheriff, was a big surprise to many people. He beat out Herman Grimm, Carthage, whose popularity in the county is pretty wide. In Southern Pines, for instance, where Grimm was heavily favored, Wimberly lost by only eight votes. His strength seemed, at least in the past few days, to be picking up, though Kelly, too, has been lining up solid with some of the Grimm supporters.

In Carthage, where the vote in the first primary was unusually heavy (and heavily in favor of Grimm), many people are talking (Continued on page 5)

Sheriff McDonald Recuperating From Mild Heart Attack

Sheriff C. J. McDonald is expected back at his desk next week after recuperation from a mild heart attack last Friday.

He returned only last Thursday from the National Sheriff's Association meeting in Pennsylvania.

The attack was described by a member of his staff as a "spasm" of mild nature, brought on probably by the tiring journey back from the Pennsylvania meeting.

CLAIMS SELF DEFENSE

Aberdeen Man Held On Open Charge Of Murder; Confesses To Officers

William Henry Kelly, 33, of Aberdeen, was being held in Moore County jail in Carthage today without bond on a charge of murder.

He has confessed to the shooting early Sunday morning of Bessie Prescott, 40, in his house in the Cabbage Hill section of Aberdeen. Both are Negroes.

He told Deputy Sheriff A. F. Deese that he fired at the woman in self defense. Deese said the weapon used was a 12-gauge shotgun and that the woman was killed at close range. A large hole was blown in the side of her head and neck.

Kelly told Deese that he shot after Mrs. Prescott pulled a knife on him. He said he ran from the kitchen of his house when she

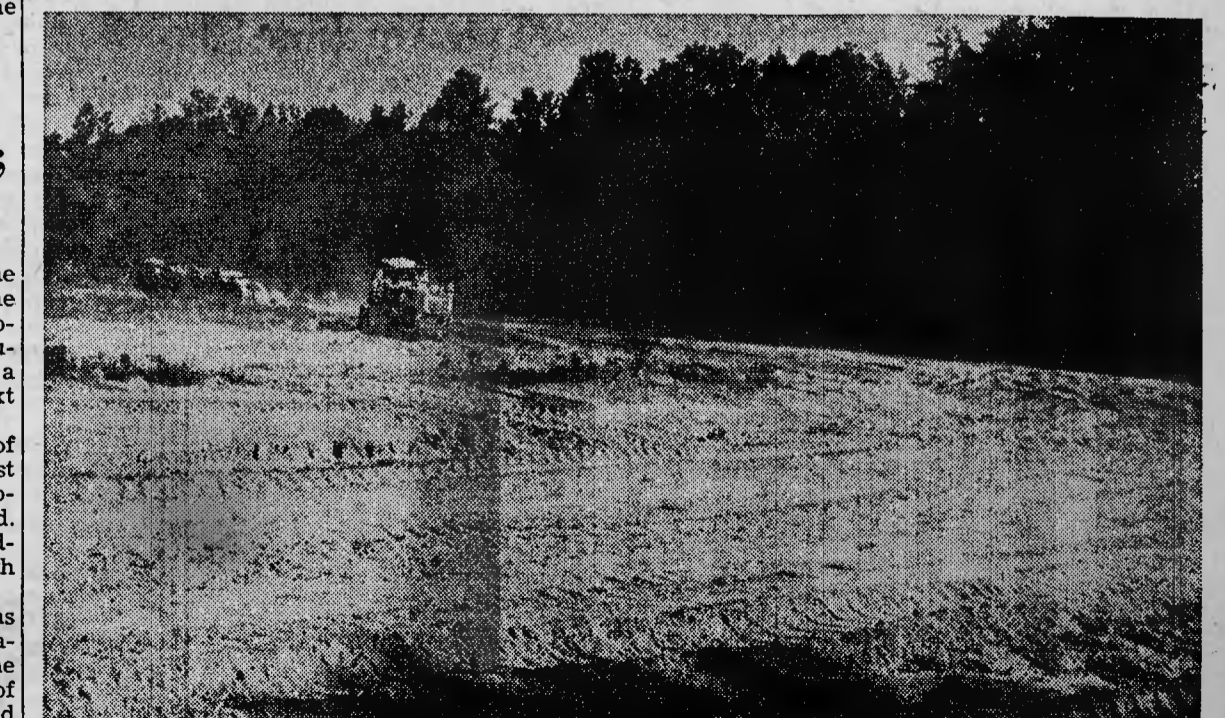
threatened him, into the dining room and then, instead of running out-of-doors, went back into the bedroom and got the shotgun.

He gave no reason for not leaving the house.

Deese said that he had information that another couple was on the premises.

In view of Kelly's admission, which was corroborated by others, Coroner Ralph Steed of Robbins ruled no inquest necessary, and Kelly will have a hearing before a magistrate unless he decides to waive it.

Both Kelly and Bessie Prescott have previous records of law violations in the county. Mrs. Prescott, it is understood, has been convicted several times of bootlegging.



NEW RACE TRACK at the W. H. Franz farms on Connecticut Avenue will be ready for the winter season. The track, which is located just off Connecticut Avenue, is part of an

ambitious program started by Mr. Franz and his son, Bill, last year and which, when completed, will make the facilities the most modern in the area. Stables are planned nearby.

(Pilot photo)