

THE PILOT

THURSDAY, NOVEMBER 26, 1959

SOUTHERN PINES, NORTH CAROLINA

Page NINE

The New Plant of Trimble Products, Inc., Looking West from Access Road. Main Entrance at Right



Trimble Products, Inc., Plant Completed

The completed plant of Trimble Products, Inc., becomes Southern Pines' largest industrial structure. Located on a 37-acre tract between Yadkin Road and the No. 1 highway parkway, the plant is 300 feet by 214 feet in size. It has 55,000 square feet of factory space and 4,000 square feet of office space. John D. Latimer Associates of Durham was the architect and Dickerson, Inc. of Monroe the general contractor. The outside walls are "utility brick," four by four by 12 inches in size. The impressive main entrance at the center of the building fac-

ing the access road features a floor-to-ceiling glass wall, screened on each side of the glass entrance doors by "veil blocks" which are perforated concrete blocks designed both to break the sunlight and for their attractive decorative effect. A portion of the veil block wall can be seen in close-up in a photo on another page. The plant is entirely sprinkler-protected. The factory area is heated by natural gas and this gas is also used to fire an oven which dries paint on manufactured products—the baby furniture and play items that the company will manufacture.

Heat pumps provide heating and air conditioning for the office area of the building. A loading platform extends across the entire rear of the building which abuts a large paved area, affording ample trucking and parking space at the rear and ends of the structure. A large area in front of the plant has been seeded and trees have been planted. Scrub oak and underbrush have been cleared from the wooded areas surrounding the plant and it is the company's plan to plant dogwood to blend with the native longleaf pines for a pleasant landscaping effect over the entire site.

Interior floors and walls in the office areas feature pastel colors, with floors a two-tone light green tile. The reception lobby immediately inside the front entrance doors features wall decorations and a large modern desk in right-angle shape. At the right as one enters is the office of President William J. Donovan and an adjoining conference room. Across the hall is the production management and engineering office with large glass interior windows that afford a view of the tool room in the factory area. At the left of the reception (Continued on Page 12)

Mr. De Puy, Board Chairman, Visiting Here

Charles T. DePuy, chairman of the board of Trimble Products, Inc. and Mrs. DePuy are visiting in Southern Pines. The Rochester, N. Y. man, who bought the Trimble company in 1928 and developed it into one of the nation's leading manufac-

equipment, is president of Trimble, Inc., the parent company at Rochester. Mr. De Puy was here early this year when negotiations in connection with the plant site were going on. Though he is not at this time planning to move to the Sandhills, he will probably make

extended visits here from time to time. Mr. and Mrs. De Puy were to be honored Wednesday of this week with a reception at the new plant, to give local residents who have played a part in locating the plant here an opportunity to meet them and also to see the newly completed Trimble facilities.

CONGRATULATIONS
and all good wishes to
Trimble Products, Inc.



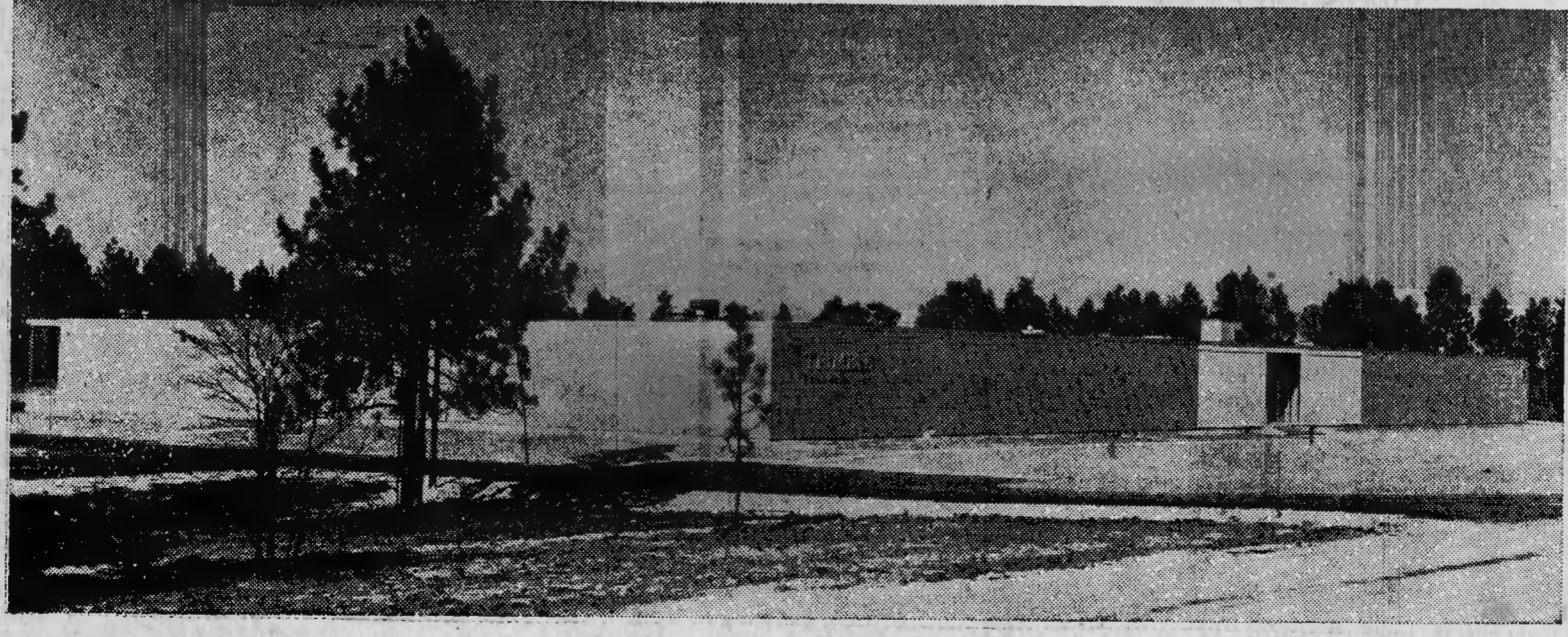
We are happy to have been selected to do the painting on this fine new building.
We will be glad to have you inspect it.



Shaw Paint & Wall Paper Co.
Ph. OX 2-7601 Southern Pines 239 N. E. Broad St.

Congratulations And Best Wishes To TRIMBLE PRODUCTS, INCORPORATED

upon occupancy of their new Southern Pines plant



We Are Glad To Have Served As The General Contractor On This Fine New Building

Dickerson, Incorporated

General Contractor
Monroe, North Carolina