



THE PILOT



VOL. 43—NO. 6

SIXTEEN PAGES

SOUTHERN PINES, N. C., THURSDAY, DECEMBER 27, 1962

SIXTEEN PAGES

PRICE: 10 CENTS



FULL-TIME FIREMEN— Charles E. (Ed) Baker, right, who has replaced Frank Kaylor as resident fireman at the New Hampshire Avenue station, and Ernest Black of Pinedene, who has been employed by the town for full-time daytime fire duty, are pictured with one of the trucks. Mr. Baker, a retired Air Force master sergeant, and his family will move to the living quarters over the truck garage after renovation work is completed. Both were members of the volunteer fire department, before their appointment to the new posts. (Pilot photo)

Property Listing For Taxes Starts Wednesday, Jan. 2

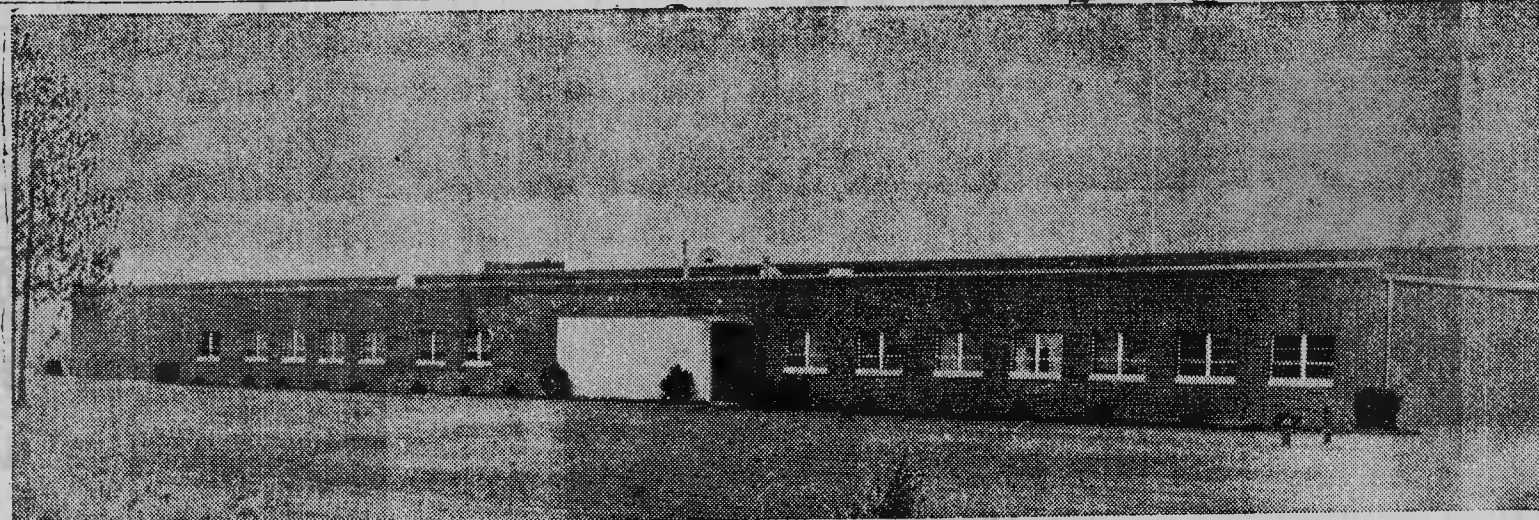
Listing of real and personal property for taxes will begin Wednesday of next week, January 2, to continue through January 31. All persons living in the county who own real or personal property are required to list, even if there is no change in their holdings since last year, points out Mrs. Estelle T. Wicker of Carthage, county tax supervisor. Failure to list during January will result in a penalty of 10 per cent of taxes due. Minimum penalty is \$1.

There will be no extension of listing time beyond January, Mrs. Wicker said.

Real estate valuations, as set by professional appraisers, will go into effect for all property owners as of January 1. The county commissioners have set the assessment value of property as 60 per cent of the "fair market value" put on all Moore County real estate by the appraisers.

Towns take their valuations for taxes from the county listings. No separate listing for town taxes is required.

McNeill Township, which includes Southern Pines, is the only township in the county with two list takers. Mrs. Irene Mullinix, who is the Vass town clerk, will list property within the city limits of Southern Pines and Vass. She will be at the Information Center building here each week day in January, except Thursdays and Saturdays. On Thursdays and Saturdays (Continued on Page 8)



Main Entrance and Administrative Offices of New Proctor - Silex Corporation Building Here

Proctor-Silex Electric Iron Plant Will Start Operations On Thursday, Jan. 3

Personnel At New Plant To Be Hired Thru ESC Office

Production personnel at the new Proctor-Silex Corporation plant here will be hired through the State Employment Security Commission, it was stated this week by Joe Fowler, Jr., of Mount Airy, industrial relations manager for North Carolina operations of the company.

Applications for employment should be made to the ESC Sanford office, or when a representative of the office visits Southern Pines each Thursday from 10 a. m. to noon, at the National Guard armory on Morganton Road.

Mr. Fowler stressed that it is not necessary for persons who made applications for employment during a labor registration here last March to apply again. Those names are all on file with the company, he said. Some 3,700 persons made applications at that time.

Proctor-Silex has received excellent cooperation from the Sanford ESC office and its manager, Garland Scott, Mr. Fowler noted, and will continue to use the services of the office for testing and other employment functions.



Richard B. Tucker, Plant Manager

Operations at the Proctor-Silex Corporation's big, new electric iron manufacturing plant are scheduled to start Thursday, January 3, Richard B. Tucker, plant manager, said this week.

Though hampered recently by delays due to bad weather, workers at the plant have been busy through the holidays, with the exception of Christmas Day, installing machinery arriving here from a half dozen or more locations.

With 120,000 square feet of floor space, the recently completed building is located at the intersection of Yadkin Road and Meetinghouse Road. Yadkin runs from Midland Road to Manly. Meetinghouse is the access road to the Trimble Products plant, as well as the new Proctor-Silex structure.

The plant is the 14th to be put into operation by the company and the third in North Carolina. Other Proctor-Silex manufacturing facilities are located at Mount Airy and Lexington in this state; and at Philadelphia, Baltimore, Chicago, two other Pennsylvania locations, and in Canada and Puerto Rico. Various electric appliances and heavy industrial equipment are produced.

A half dozen or more executives, engineers and supervisory personnel have moved to Southern Pines with their families. Most of them have been training together at the Mount Airy plant, in preparation for their work here. Several local men have also been training at Mount Airy.

Some 20 local employees have been hired in recent weeks and an additional 50 are being selected from the applicant file, Mr. Tucker said, to compose the initial operating group.

The manager expects that all phases of the operation will be under way in about six months, with about 300 persons employed. The plant should reach top production, employing 400 to 500 persons, in about a year, he said.

In a labor registration held by the company, and the State Employment Security Commission last March, about 3,700 applications for work at the plant were filed.

Mr. Tucker replaces Kenneth E. Herrmann who was designated plant manager when the new industry was announced in March and was closely in touch with progress during the plant's construction, spending much time here and buying a house at Whisler. (Continued on Page 5)

Ice Storm Hits Section, Utilities Suffer Damage

There was no "God rest ye merry, gentlemen" for the electric power and telephone crews on Christmas Day or the day after, as they were out around the clock, from dawn on Tuesday, repairing damage caused by the season's first ice storm. Some town officials and work crew members were also out clearing streets on Christmas afternoon and night.

Monday's chill rain and mist started freezing at dark that night, and early Christmas morning grew heavy and thick enough to bring tree-branches crashing down all over Moore County. Many of them brought down

utility lines at the same time, in and out of towns.

It was fine weather for reindeer, but bitter for the repairmen as they left their homes with first light, about the time their children were waking joyfully to Christmas.

The bad weather was general throughout the State north and west of the Sandhills, but according to W. Ward Hill, Southern Pines branch manager for the Carolina Power & Light Co., "This area was in a belt which bore the full brunt of the storm." (Continued on Page 8)

Gratitude To Workers Expressed

Numerous expressions of appreciation for the work of Carolina Power and Light and United Telephone crews during the Christmas Day ice storm emergency have been heard in Southern Pines and several persons have called or written The Pilot, to praise the workers.

A visitor from New York City stopped at The Pilot office Wednesday to express amazement at the devotion to duty of CP&L crews on Christmas Day, giving up their holiday to restore electric

service to many locations as rapidly as possible.

David A. Drexel, whose estate off Pee Dee Road, just out of the city limits, was without power Christmas afternoon and late into that night, wrote to The Pilot, in part:

"This week, during the ice storm, many of our Christmas trees were dark and in the darkness light was shed upon a rich blessing of our community: the selfless and untiring efforts of (Continued on Page 8)

Husband-Wife Duo To Perform Here Saturday, Jan. 5

The first musical festivity of the new year will take place a week from Saturday, on January 5, when, Weaver Auditorium will be the scene of the second concert in the series being presented by the Sandhills Music Association.

This week the big poster will go up in front of the Barnum office on Broad St., saying that tickets may be purchased within for this featured appearance here of two distinguished artists, the Lucktenberg Duo.

Jerrie Cadek Lucktenberg and George Lucktenberg are a husband-and-wife team who have concertized both together and in solo performances since their marriage in 1953. Mr. Lucktenberg's tours with his mighty nine-foot harpsichord have done much to arouse interest in this delicate and beautiful early instrument, while his wife is the envied possessor of two famous violins, an (Continued on Page 8)

Man Killed, 8 Hurt In Collision Near Cameron Sunday

One highway fatality marred the Christmas weekend in Moore County, resulting from a wreck near Cameron about 4 p. m. Sunday which sent eight other people to the hospital.

Instantly killed was Woodrow E. Person, 24-year-old Negro of Carthage, Route 2, when his car reportedly sideswiped another, throwing him out, then rolled over on top of him.

Hospitalized was his wife Elsie, 25, while another passenger, Odell Small, was reported unhurt.

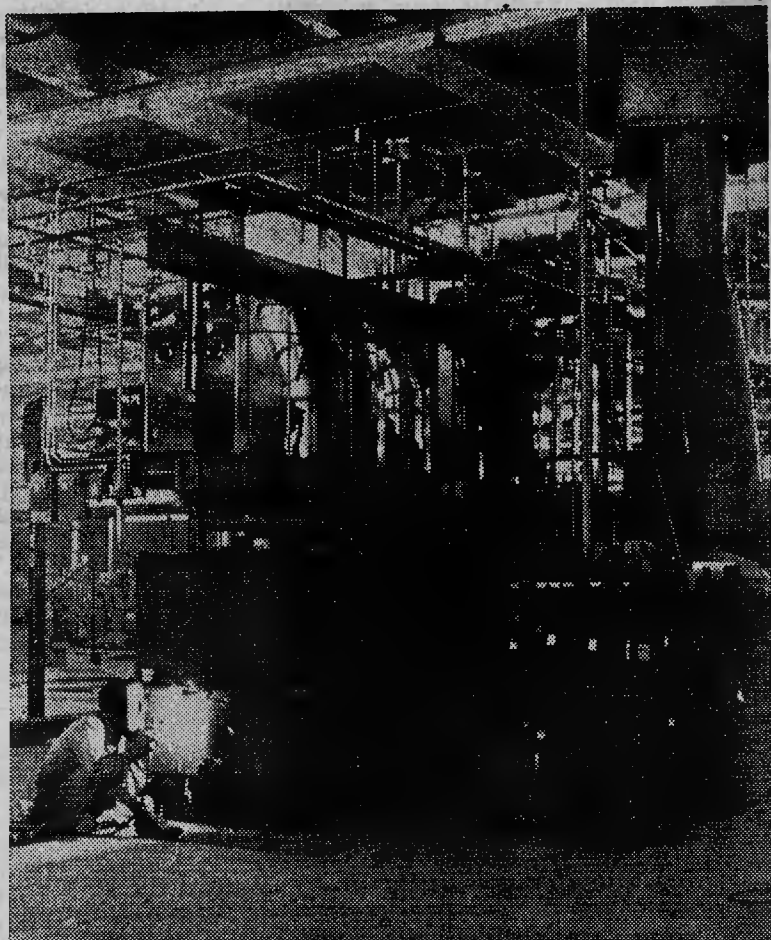
The sideswiped car, damaged so badly it had to be towed in, contained seven people, including four children. Given first aid at St. Joseph's Hospital were the driver, John Archie Smith, 36, of Carthage, Route 1, his wife Mary, 37, and their sons Richard, aged five, and Johnnie Ray, no age given; also Mrs. Smith's sister, Mrs. Frances Smith, of Cameron, Route 2, and her son David, aged two. Her daughter Dorothy Ann, eight, was admitted to the hospital, remaining overnight for observation and treatment.

Mrs. Elsie Person, the most seriously hurt, told Coroner W. K. Carpenter her husband had been drinking. At St. Joseph's she was reported Thursday to be "in satisfactory condition."

Carpenter ruled Person's death accidental. Trooper R. F. Wicker investigated the accident.

VFW PARTY HELD

Many children of the community enjoyed the annual Santa Claus party of John Boyd Post, Veterans of Foreign Wars, held last Sunday afternoon at the post home on N. W. Broad St. Refreshments were distributed. Members of the post and its Auxiliary were on hand to welcome the kiddies.



INSTALLATION WORK— Huge size of this floor-to-ceiling plating machine being installed at the new Proctor-Silex plant can be seen by comparison with the welder working at lower left. The scene is typical of the past week in the big new building where machines are rapidly being set up in preparation for a January 3 start of operations. (Pilot photos, top and bottom, above. Humphrey photo, center)

NEW YEAR'S DAY

Banks, post offices, ABC stores and some local stores and offices in Moore County will take a holiday on New Year's Day, Tuesday, January 1.

The municipal offices here will close at noon, Monday, and be closed through Tuesday, Town Manager F. F. Rainey said.

The Pilot office will open as usual.

Highway Patrol Warns About Traffic Danger

Special caution on the highways during the 102-hour New Year's week-end, from 6 p. m. Friday, to midnight, Tuesday, January 1, is urged by the State Highway Patrol, noting that 10 persons were killed and 409 injured in the 78 hours of the New Year holiday one year ago. One traffic fatality (see separate story) was recorded in Moore County over the Christmas week-end.

Dr. Chester Showing Slight Improvement

Dr. P. J. Chester, local physician who suffered a stroke at his home December 16, has made slight, but definite improvement this week at Moore Memorial Hospital, but remains seriously ill, the attending physician said this morning.

THE WEATHER

Maximum and minimum temperatures for each day of the past week were recorded as follows at the U. S. Weather Bureau observation station at the W. E. E. B. studios on Midland Road.

	Max.	Min.
December 20	59	37
December 21	28	28
December 22	49	28
December 23	55	26
December 24	46	28
December 25	32	27
December 26	53	28



CHRISTMAS CHEER—A few of the dozens of Christmas Cheer baskets packed and delivered in Southern Pines and nearby area by members of John Boyd Post, Veterans of Foreign Wars, are pictured here with a group of the veterans on hand Monday afternoon at the post home to make deliveries. The baskets went to families whose need was certified by the Moore County Welfare Department. Similar

Christmas Cheer deliveries were made throughout the county by various civic and fraternal organizations and individuals cooperating with the Welfare Department program. Toys were included with baskets for families with children, so far as possible. The local Moose Lodge repaired broken toys to be given away. Barrels placed in food stores brought donations of many grocery items. (Humphrey photo)