

● ALLGOOD BRAND NO.-1 SMOKED FLAVORED SLICED

**BACON** 1-LB. PKG. **39c**

● "SUPER-RIGHT" FRESH 10 to 16-POUND AVERAGE  
**PORK LOINS** **45c**  
WHOLE OR RIB HALF LB.

"SUPER-RIGHT" QUALITY FRESH CENTER CUT

**PORK CHOPS**

Rib

● **55c**

PER LB.

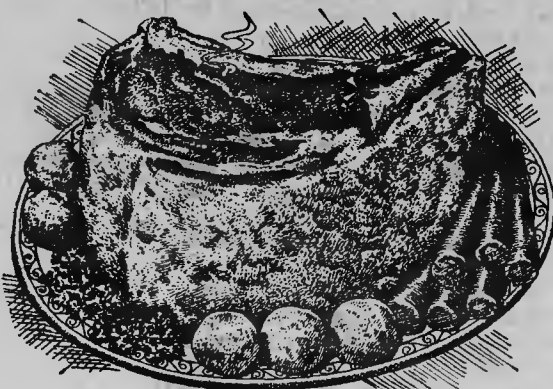
END CUT  
CENTER CUT Loin Chops Lb. **65c** Pork Chops Lb. **39c**

"SUPER-RIGHT" MARKET STYLE PORK Back Bones Lb. **35c**

"Super-Right" Fresh PORK ROASTS LOIN END CUT Lb. **35c**

"SUPER-RIGHT" HEAVY GRAIN FED

**BEEF RIB**



10" CUT  
25 to 30  
LB. AVG.

PER LB.

● **69c**

SHORT RIBS OF BEEF Lb. 35c BONELESS RIB STEAKS Lb. 99c

**Rib Roasts**

First 4 RIB CUT

PER LB.

● **85c**

5th & 6th RIB CUT

PER LB.

● **75c**

PRICES IN THIS AD ARE EFFECTIVE THRU SAT. JAN. 5th.

OUTSTANDING VALUE! WALDORF Bath Room TISSUE 4 Rolls **33c**

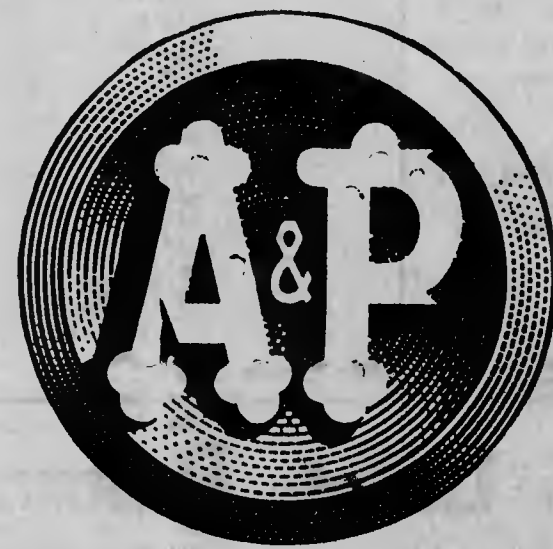
NABISCO REGULAR or HONEY GRAHAMS 1-lb. Pkg. **33c**

● OUTSTANDING NEW YEAR PARTY VALUE! ALL VARIETIES-TASTY

**Hi-C Drinks** 3 1-QUART 14-OZ. CANS **89c**

PACKER'S LABEL BRAND Dried Blackeyes 2 lb. Pkg. **23c** PREPARED WITH or WITHOUT PORK Sultana Blackeyes 15 1/2-oz. Can **10c**

● NO LIMIT AT YOUR A&P! RED SOUR PITTED A&P BRAND **CHERRIES** No. 303 1-lb. 1-oz. Can **15c**



WHITE VEGETABLE Crisco Shortening 3 lb. Can **89c**

ANN PAGE PROVES Fine Foods Needn't Be Expensive

ANN PAGE TOMATO SOUP SPECIAL! 5 10 1/2-OZ. CANS **49c** 3 1-LB., 4-OZ. CANS **49c**

ANN PAGE PREPARED MACARONI In Cheese Sauce 2 15 1/2-OZ. CANS **33c**

ANN PAGE PREPARED SPAGHETTI In Cheese Sauce 2 15 1/2-OZ. CANS **25c**

JANE PARKER 8" CHERRY PIES ● LARGE RING ANGEL FOOD CAKE

EACH **39c**

U. S. NO. 1 MAINE RUSSET

**POTATOES** 10 LB. BAG **49c**

SWEET POTATOES 4 LBS. **29c**



GREAT FOR SNACKING YORK APPLES 4 lb. Bag **35c**

CHILDREN GO FOR TASTY ANJOU PEARS 2 lbs. **29c**

CALIFORNIA JUICY ORANGES 2 LBS. **29c**

CANNON WHITE MUSLIN Sheets 72"x108" EACH **\$1.99** 81"x108" EACH **\$2.09** A&P BRAND—"OUR FINEST QUALITY" Tomato Juice 2 1 QUART 14-OZ. CANS **45c**

A&P FROZEN OUR FINEST FROZEN GREEN PEAS 2 10-oz. Pkgs. **33c** 2 lb. Pkg. **45c** A&P CUT CORN 10-oz. Pkg. **15c** 2-lb. Pkg. **39c**

"OUR FINEST QUALITY" FROZEN FRENCH STYLE OR REGULAR CUT GREEN BEANS 2 9-Oz. Pkgs. **35c**

TRIAL-AQUA COLOR-SOAP 2 Bath Bars **39c** 2 3 1/2-Oz. Bars **29c** A&P COFFEE Vacuum Packed Blended 1-Lb. Can **63c** 2 Lb. Can **\$1.21**