

Official 1964 State Highway Maps Available

The 1964 official North Carolina highway maps in color and black and white are off the press and available for distribution by the Highway Commission.

The 1964 color map features a scenic view of a portion of US 52 in Surry and Stokes Counties with Pilot Mountain in the background, and the cover of the black and white map features a front entrance view of the State Legislative Building in Raleigh.

Tourist information appears on both maps, and includes data on rest areas, motor vehicle laws and signals, and weight restrictions. The color map includes several photographs of the State Legislative Building, North Carolina scenic areas, and a number of points of interest across the State.

69 Moore County Families Aided By Farmers Home Administration In '63

Moore County farm and other families borrowed \$348,760 from the U. S. Department of Agriculture's Farmers Home Administration in 1963 to improve farming operations, buy and enlarge farms, build houses, install water systems, and for other development purposes, W. B. Hill, local supervisor of the agency, reported this week.

A total of 69 families in the county used credit from the agency during the year, either as individual borrowers or members of associations with a Farmers Home Administration direct or insured loan. This represents a 40 per cent increase over the number for

1962. Loans are made by Farmers Home Administration only to qualified borrowers who cannot obtain credit from banks, Production Credit Associations and other conventional lenders.

Under an insured program of the agency, these lenders also provide about 80 per cent of the funds loaned by Farmers Home Administration and secured by real estate.

Moore County families paid the agency \$99,696 in interest and principal on loans outstanding during the year.

Mr. Hill singled out the farm ownership and rural housing loan programs of his agency as being of particular importance in the county last year.

Most Important

He also reported that management assistance to Farmers Home Administration borrowers in the county is the most important aspect of his work.

Last year 13 farm families in the county using Farmers Home Administration credit received assistance in solving farm and home management and financial problems.

"The efficient management of farm resources now is the crucial factor in the success of farmers here in the county and throughout the state," Mr. Hill said.

A total of \$69,330 went to 41 Moore County farmers to pay for equipment, feed, seed, livestock, for other farm and home operating needs, and to refinance chattel debts and carry out forestry purposes.

Ownership Loans

Farm Ownership loans totaling about \$104,430 were used by nine farmers to enlarge, develop, and buy farms not larger than family size, and to refinance debts and carry out forestry purposes.

Rural housing loans estimated at \$176,000 were made to 19 farmers and rural residents.

The Farmers Home Administration office serving Moore County is located in the basement of the Courthouse in Carthage.

Dr. Phillips Is Lions Speaker

Dr. Charles Phillips, Southern Pines physician who is associated with the Pinehurst Surgical Clinic, was guest speaker at Friday night's meeting of the Southern Pines Lions Club at Holiday Inn, discussing the effects of tobacco on human health.

The club made tentative plans for a Ladies Night meeting Friday night, March 13, at Hernandez's in Richmond County.

Joe Marley, Jr., was a guest. The club meets on the second and fourth Friday evenings of each month.

Pine Lakes Shooting Preserve

AND KENNELS
RT. 1, WEST END, N. C.



QUAIL HUNTING

BIRD DOGS BOARDED AND TRAINED

Open October 15 - March 31

N. C. License No. 18 Extended Season Permit No. 10

Over 120 Coveys To Choose From.

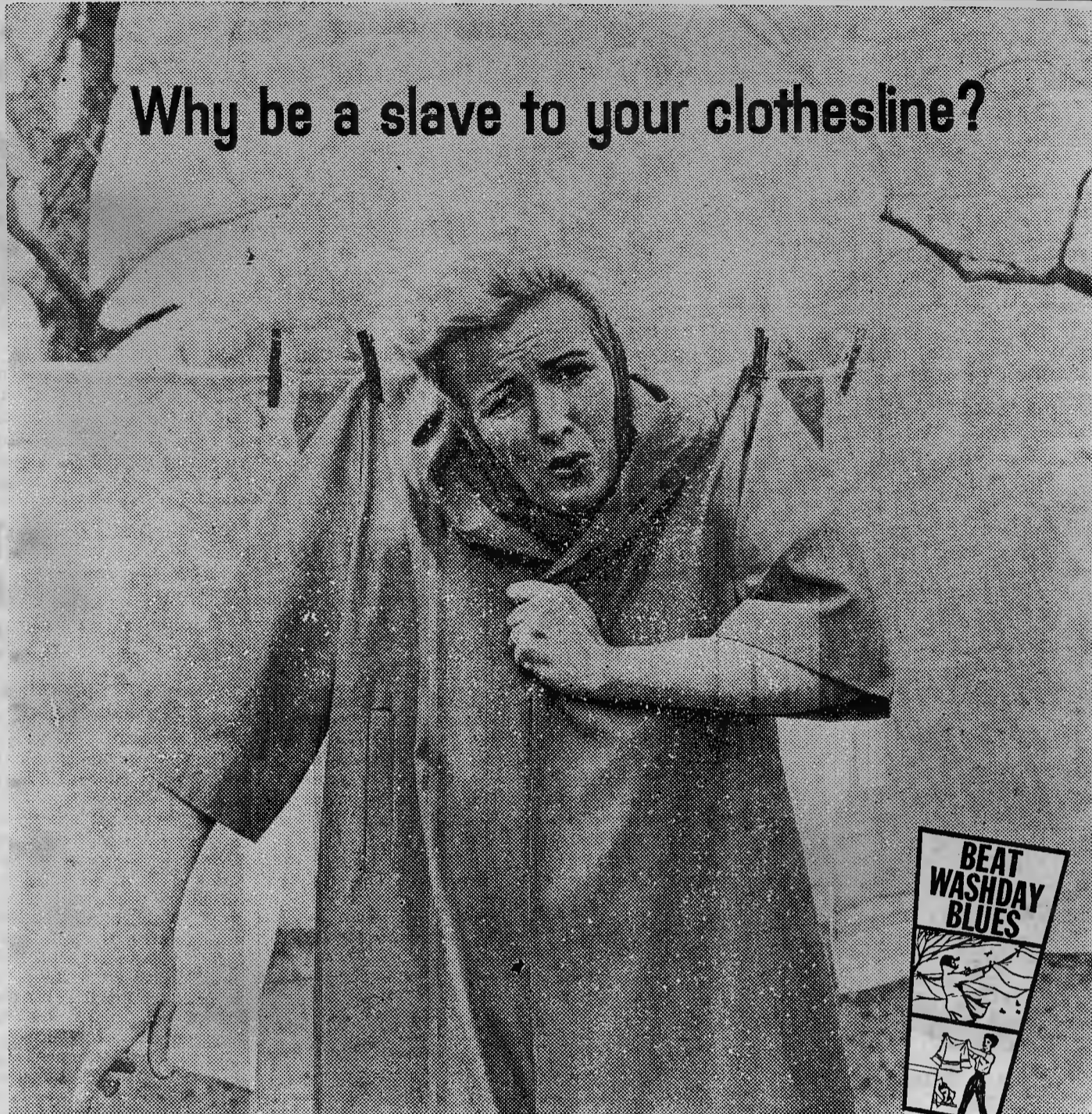
Large Private Hunting Area.

Good Views of Wild Waterfowl

In Their Natural Habitat.

Verden Batten, Mgr.

Telephone: Carthage 947-5302



Why be a slave to your clothesline?

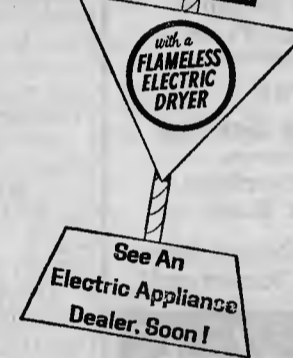
WIN your freedom from the hard work and miserable weather that go with drying clothes on the line. Move indoors to comfort and convenience with a flameless electric dryer.

A fully automatic electric dryer eliminates the washday discomforts of frosty fingers and feet . . . lifting and lugging heavy baskets of wet clothes to the line . . . waiting for the weather to clear. With a flameless dryer, the blues vanish and your washday becomes more comfortable and pleasant than ever before.

Get an electric dryer, soon. Many homemakers are already enjoying them.

CAROLINA POWER & LIGHT COMPANY

An investor-owned, taxpaying, public utility company



OLDS F-85

Stepped up in size, stepped up in performance . . . for everyday owner driving!

MORE CAR THAN EVER . . . AT A LOWER-THAN-EVER PRICE!

Any way you look at it . . . this new F-85 is pure value all the way around! More stretch-out room inside . . . plus 30% more trunk space! More news under the hood, including a spirited new Jetfire Rocket V-8 or dollar-saving Econ-O-Way V-6! And more models to choose from . . . at prices that start lower than ever. See your Olds Dealer now . . . step into a more-for-the-money F-85!



'64 OLDS WHERE THE ACTION IS!

SEE YOUR LOCAL AUTHORIZED OLDSMOBILE QUALITY DEALER . . . HEADQUARTERS FOR NINETY-EIGHT, STARDUST, SUPER 88, DYNAMIC 88, JETSTAR I, JETSTAR II, F-45 . . .
STILL OLDSMOBILE—PONTIAC, INC.
U.S. Highway 15 & 501, South Southern Pines, N. C.
Dealer's License No. 2216

VISIT YOUR OLDS DEALER DURING "USED CAR ACTION TIME" FOR A BIG SELECTION OF LATE-MODEL VALUE-RATED USED CARS!



WHICH CHECK PLAN DO YOU LIKE BEST?

SPECIAL RITE-CHECK PLAN REGULAR CHECKING ACCOUNT

If you write only a small quantity of checks each month, you would probably prefer our Rite-Check Plan at 10c per check. Because there's no monthly service charge with this plan. Your checking account balance is always accurate and up-to-date.

If you pay most bills and household expenses by check, a regular checking account serves you better. With this plan, your service charge is determined by the number of checks you write in relation to your average account balance. We invite you to open either type at Citizens Bank.

THE CITIZENS BANK



AND TRUST COMPANY

SOUTHERN PINES, N. C.

INSTALLMENT LOAN HEADQUARTERS SOUTH BROAD ST. OFFICE

Member Federal Deposit Insurance Corporation