

Advantages Of Separate School Unit Listed By Officials

(Continued from Page 1)
 districts—35 cents per \$100 of property valuation in the Southern Pines District and 25 cents in the Pinehurst District. The level at which this tax would be equalized remains to be decided and announced.

The Southern Pines and Pinehurst school districts are the only two "city" units in the county. All other schools are operated by the county school system under an elected board of education and one superintendent, Robert E. Lee, with headquarters in Carthage.

For the Southern Pines and Pinehurst school districts, the two alternatives to merging as a single independent unit would be: (1) To join with the Aberdeen or Aberdeen and West End units in an even larger separate administrative unit, outside the county school system; and (2) Give up independent status and consolidate with the Aberdeen and West End districts (now already county-administered), becoming a part of the county school system.

Both of these possible alternatives have been discussed, privately and publicly, in this area recently. Some aspects of these proposals are noted in another story reporting a meeting held at Aberdeen last Friday night, elsewhere in today's Pilot.

Reasons Listed

The following numbered paragraphs list the basic reasons why the Southern Pines and Pinehurst boards of education feel that an independent administrative unit should be retained by the two districts, if their merger is approved by the voters:

1. A separate administrative unit is certain to receive the percentage share of "Per Capita" (Current Expense) tax money and also of capital outlay money. This certainty applies, too, for State bond money from a State bond election similar to that which will take place November 3.

2. It is not true that a district school committee has the same authority as a city school board, or a county school board. A city board has the same authority as a county board and the same responsibilities.

3. All decisions of the district school committee and the principal are subject to the approval of the county school superintendent and county board in hiring teachers, principals, janitors, maids.

4. City administrative units have more control and understanding of local conditions.

5. District School Committees over the State, are developing as only advisory committees to county school boards and are being eliminated. This has taken place in Mecklenburg and in New Hanover Counties. At an April state meeting, the assistant state superintendent, Everette Miller, stated that the district committees and functions were "on the way out" and that the county school boards were assuming the district school committees functions.

6. A special administrative unit

such as Southern Pines and Pinehurst, gives local control and creates more interest in school decisions. The people feel that they have a closer contact and more voice in school operations.

7. The Pinehurst and the Southern Pines Schools have been successful and the graduates have been successful. This identity should be maintained.

8. There is a concentration of wealth in this end of the county and the citizens pay a larger tax on a per capita basis and a larger expenditure on per pupil per capita can be maintained. This is often reflected in smaller classes where individualized instruction becomes a reality.

9. Years ago, the Southern Pines schools did not join in the county unit because a stronger and a better school could be maintained in a special unit. The Pinehurst Schools had to withdraw from the Moore County unit in order to have the type of school the Pinehurst citizens demanded.

10. When Southern Pines and Pinehurst merge, the vocational, industrial, and commercial educational programs will be equal to any school in North Carolina. This will be true also in the special education field, including the superior and gifted student program, speech training or speech defects, and classes for the retarded or handicapped children.

11. The merged units, Southern Pines and Pinehurst, would have a superintendent and other personnel on a 12-months basis paid by State funds. A district school set-up, on the other hand, provides generally for a principal and personnel on a 10-months basis. If more than 10 months' service is required, the principal and others have to be paid from local funds.

A "district school committee," as referred to above, is a group in each district of the county school system, whose members are appointed by the county board of education. By law, district school committees have control over supplemental tax funds and are charged with maintenance of buildings, limiting their authority drastically, the Southern Pines and Pinehurst superintendents point out, as compared with boards of education of county or city administrative units. (Moore County school officials, however, say they follow recommendations of district committees in matters of both faculty and curriculum, although it is a fact that the board of education, not the district committee, has the final authority.)

Mr. Jenkins and Mr. Cannon noted that the combined graduating classes of the Southern Pines and Pinehurst schools this year numbered more than 100, referring to Dr. Conant's recommendation in his national study of high schools, that a school should have a minimum of 100 in its graduating class to provide adequate educational opportunities.

Referring to the unwillingness of the Southern Pines and Pinehurst boards of education to give up their independent unit and join the county school system, the two superintendents asked that it be made clear "we are not fighting the county schools and want them to have good schools." However, they said, "if Southern Pines and Pinehurst want to spend more for education, we ought to be allowed to do it."

Purpose of the course, he explained this week, is to teach people "to read faster with better comprehension."

Most people think they read better than they actually do, he explained.



MASTER'S DEGREE— After receiving the master of arts degree in Religious Education from the Hartford Seminary Foundation at Immanuel Congregational Church, Hartford, Conn., the Rev. James Emerson Humphrey, native of Southern Pines, posed for this happy scene with members of his family. The son of Mr. and Mrs. Emerson Humphrey of Southern Pines, he had been ordained into the ministry a few days previously. He is shown with his wife, Faye, at his right; his sister, Mrs. Carol Sue Roycroft of Chapel Hill, and one of her two daughters, Jo Carol. The Rev. Mr. Humphrey and his wife have a two-months-old son, John Gordon. The newly ordained minister is now serving as religious counselor in the Hartford Hospital and this fall will move to Rutland, Vt., to become associate minister, in charge of Religious Education, at a church there. Mrs. Roycroft and her brother are both graduates of Southern Pines High School where they received many honors. She has a degree in child psychology from Woman's College of the University of North Carolina and is director of the Victory Village Nursery, Chapel Hill, while her husband is a student in the University's School of Pharmacy. The photo was made by Emerson Humphrey of Southern Pines, a professional photographer, who attended his son's ordination and graduation ceremonies.

STABILIZATION MEETING
 L. T. Weeks, general manager of Flue-Cured Tobacco Cooperative Stabilization Corporation, announced that the Cooperative's 18th Annual Stockholders meeting would be held on Friday, June 26, in Raleigh, N. C., in the Carolina Room of the Memorial Auditorium, beginning at 10 a.m.

SUBSCRIBE TO THE PILOT.
MOORE COUNTY'S LEADING NEWS WEEKLY.

FOR ATHLETE'S FOOT USE KERATOLYTIC ACTION

Because it sloughs off the infected skin. You see healthy skin replace it. Get quick-drying T-4-L liquid, a keratolytic, at any drug store. If not pleased in 3 DAYS, your 48c back. Use antiseptic, soothing T-L-4 FOOT POWDER too—fine for sweaty feet, foot odor; stays active in the skin for hours. TODAY at ALL DRUG STORES. 14,11,18c



SIT HERE FOR WORK- SAVING FUN-LOVING YARD CARE!

NEW... IMPROVED HOMELITE Yard Trac DELUXE

takes 9 big outdoor jobs in stride

This husky has get-up-and-go with its powerful 5 HP engine. Travels on longer, sturdier wheel-base. And with big, new 16" diameter rear wheels — pneumatic tires rear, semi-pneumatic front—you ride in comfort. Automatic transmission. DUALTRAC drive system. Automatic brakes. Foot brake optional. Call for a free demonstration in your yard.

ATTACHMENTS
 26" rotary and 60" gang-reel mowers
 * Lawn Sweeper * Seed-Spreader
 * Roller * Leaf Mulcher * Aerator * Utility Cart * Grass Catcher * Robotic Rake
 * Snowplow in Winter * Light-duty Dozer in Summer.

Keith Hardware
 Vass, N. C.

SUNRISE
 Theatre Ph. 695-3013
 Continuous Shows Daily

THURSDAY JUNE 18 Thru TUESDAY JUNE 23

METRO-GOLDWYN-MAYER PRESENTS
ELVIS PRESLEY & ANN-MARGRET
 in A JACK CUMMINGS-GEORGE SIDNEY PRODUCTION

Hear Elvis sing 4 new songs on his RCA-Victor 45 EP record— "VIVA LAS VEGAS"

It's that "Go-Go" guy and that "Bye-Bye" gal!

Viva Las Vegas

CECILE DANOVA · WILLIAM DEMAREST
 NICKY BLAIR · SALLY BENSON · GEORGE SIDNEY

Sat. — 11:30 - 1:05 - 3:05 - 5:05 - 7:05 - 9:05
 Sun. — 1:30 - 3:05 - 5:05 - 7:05 - 9:05
 Wk. Days — 3:20 - 5:05 - 7:05 - 9:05

Monday Last Day To Join Class In Speed Reading

Monday, June 22, will be the final day to register for a Speed Reading course being given here by Dr. Veal G. G. McBride of Methodist College, Fayetteville, in cooperation with the East Southern Pines Schools, Supt. J. W. Jenkins said this week.

More than 30 persons, ranging from a fourth grader to numerous adults of the community, including two teachers, have already registered for the course and began work this week. However, said the superintendent, it will be possible to register through Monday.

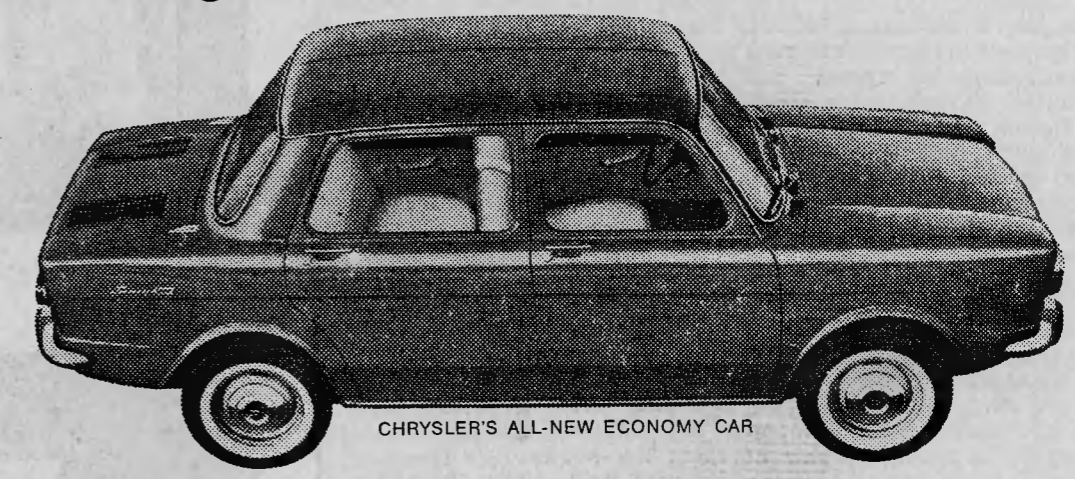
The one-hour classes in the school cafeteria are being held on Monday, Tuesday, Thursday and Friday, from 1:30 to 2:30 p. m., to continue on this schedule till Thursday, July 15. Each student pays a fee. No school credit is given for the course.

The achievements of Dr. McBride's students in speed reading have been widely publicized. Speeds of over 13,000 words per minute, with over 86 per cent comprehension, were attained by children taking his course last summer at the college.

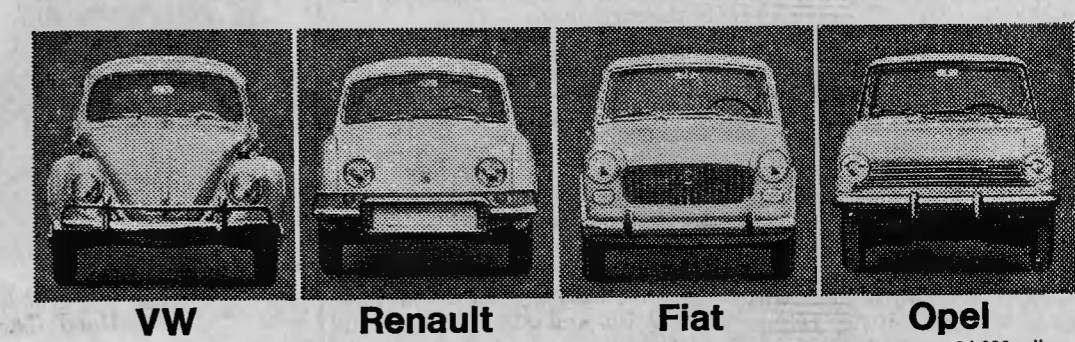
Purpose of the course, he explained this week, is to teach people "to read faster with better comprehension."

Most people think they read better than they actually do, he explained.

Compare the 5-year/50,000-mile warranty* on Simca 1000's vital engine and drive train parts



with warranties on other economy imports:



VW 6 months or 6,000 miles Renault 12 months or 12,000 miles Fiat 12 months or 12,000 miles Opel 24 months or 24,000 miles

Who's the leader now? Simca 1000. Chrysler's all-new economy car. Great performer, best protected, \$1595.**

*HERE ARE THE FACTS: Chrysler Motors Corporation warrants all of the following vital parts of the Simca 1000 for 5 years or 50,000 miles, whichever comes first, during which time any such parts that prove defective in material or workmanship will be replaced or repaired at an Authorized Simca Dealer's place of business without charge for such parts or labor: engine block, head and internal parts, water pump, intake manifold, Trans-Axle parts and rear wheel bearings.

HERE'S ALL YOU MUST DO: Give your car this normal care—change engine oil and retorque the cylinder head at first 600 miles and thereafter change engine oil every 3 months or every 4,000 miles, whichever comes first; clean oil separator every 6 months (spring and fall); clean carburetor air filter every 6 months and replace it every 2 years; and clean the crankcase ventilator valve oil filler cap and change Trans-Axle lubricant every 6 months, or 8,000 miles, whichever comes first; AND every 6 months furnish evidence of this required service to an Authorized Simca Dealer or other Chrysler Motors Corporation Authorized Dealer and request him to certify receipt of such evidence and your car's mileage. Simple enough for such important protection.

**Manufacturer's suggested retail price East Coast POE including heater, excluding state and local taxes, if any, and destination charges. Whitewalls optional, extra.

NEWLAND PHILLIPS MOTORS, INC.
 795 S.W. Broad Street Southern Pines, N. C.

Bourbon de Luxe
 Kentucky Bourbon Whiskey A Blend

\$250 PINT \$400 4/5 QT.

BOURBON DE LUXE
 THE BOURBON DE LUXE DISTILLERY COMPANY, LOUISVILLE, KENTUCKY. 86 PROOF. CONTAINS 49% GRAIN NEUTRAL SPIRITS.